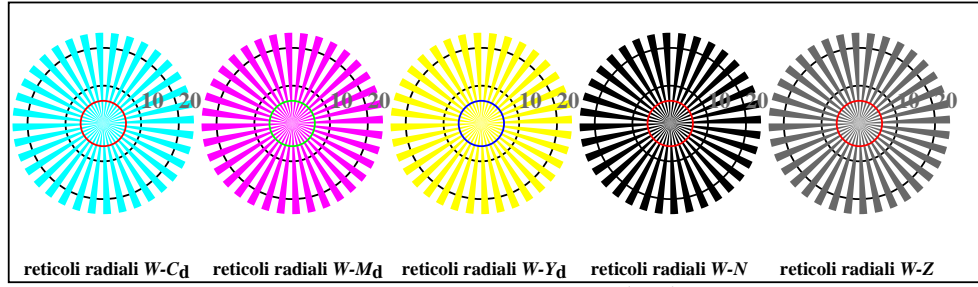


vedi file simili: <http://standards.iso.org/iso/9241/306/ed-2/AI28/AI28L0FA.TXT/.PS>
Informazioni tecniche: <http://farbe.it.tu-berlin.de/> o <http://farbe.it.tu-berlin.de/AE.HTM>

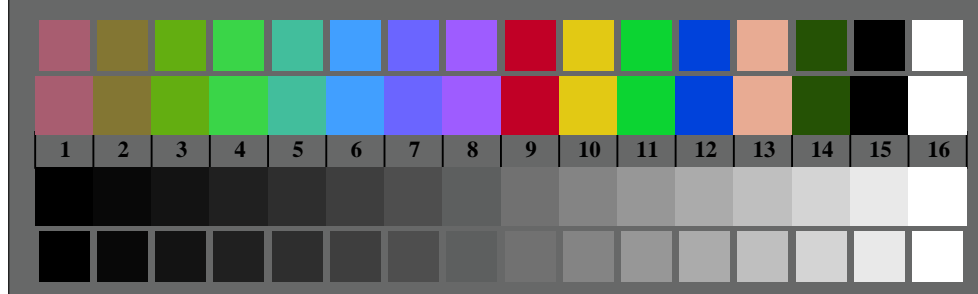
iscrizione TUB: 20190301-AI28/AI28L0FA.TXT/.PS
Applicazione per la misurazione e la visualizzazione dell'output su display e stampa
TUB materiale: code=rhata



AI280-3, Fig. B1Wdd: Flower motif, 14 prova colori CIE e 2 + 16 grigio passi (nf); PS operator: *settransfer, 3 colorimage*



AI280-5, Fig. B2Wdd: reticoli radiali W-C_d; W-M_d; W-Y_d; W-N; PS operator: *rgb->rgb_{dd} setrgbcolor*



AI280-7, Fig. B3Wdd: 14 prova colori CIE i 2 + 16 grigio passi (sf); *rgb/cmy0->rgb_{dd} setrgbcolor*

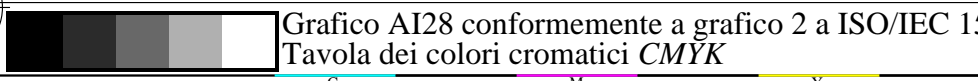
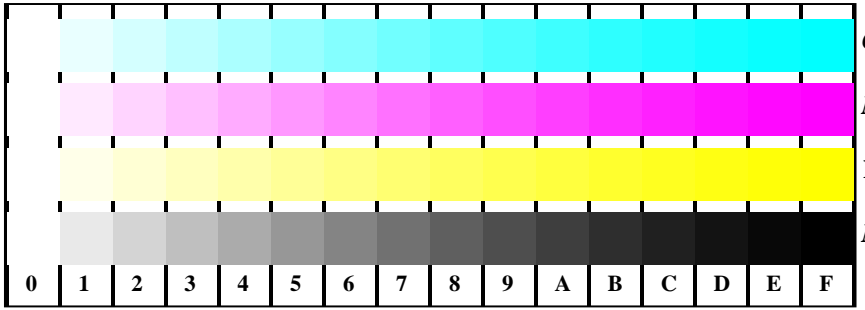
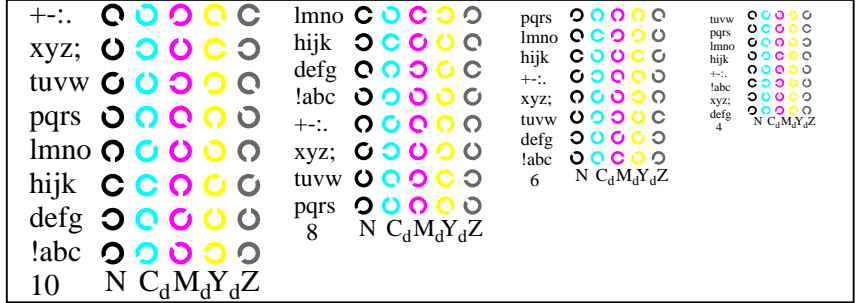


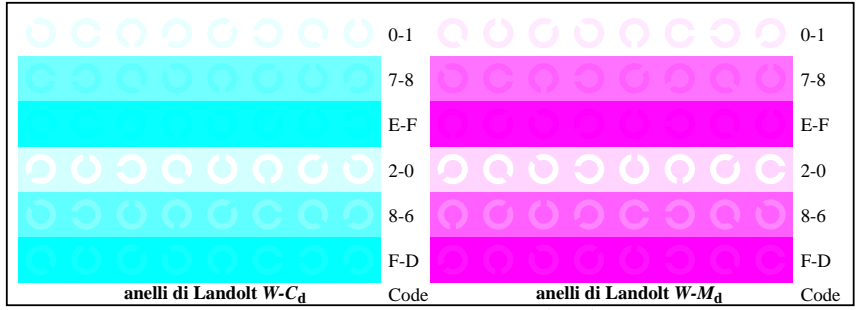
Grafico AI28 conformemente a grafico 2 a ISO/IEC 15775
Tavola dei colori cromatici CMYK



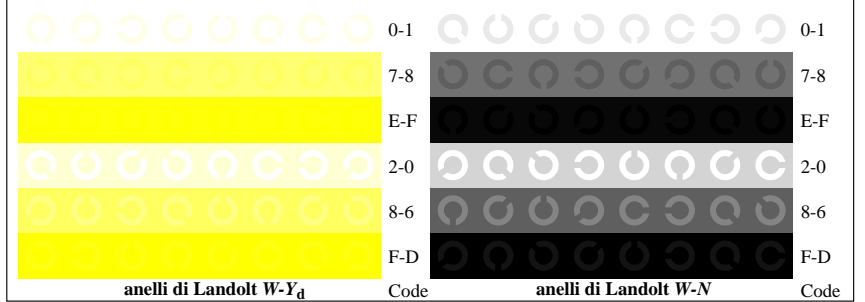
AI281-1, Fig. B4Wdd: 16 equidistante passi W-C_d; W-M_d; W-Y_d; W-N; *rgb/cmy0->rgb_{dd} setrgbcolor*



AI281-3, Fig. B5Wdd: codice i Landolt anelli N; C_d; M_d; Y_d; Z; PS operator: *rgb->rgb_{dd} setrgbcolor*



AI281-5, Fig. B6Wdd: anelli di Landolt W-C_d; W-M_d; PS operator: *rgb->rgb_{dd} setrgbcolor*



AI281-7, Fig. B7Wdd: anelli di Landolt W-Y_d; W-N; PS operator: *rgb->rgb_{dd} setrgbcolor*

Input: *rgb/cmy0/000n/w set...*
Output: *->rgb_{dd} setrgbcolor*