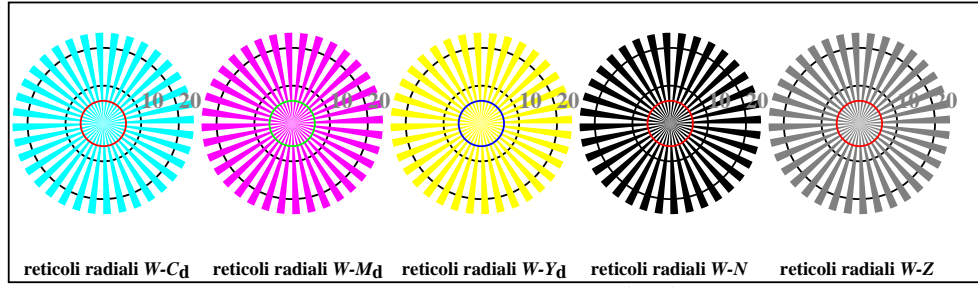


vedi file simili: <http://standards.iso.org/iso/9241/306/ed-2/AI28/AI28L0FA.TXT/.PS>  
Informazioni tecniche: <http://farbe.it.tu-berlin.de/> o <http://farbe.it.tu-berlin.de/AE.HTM>

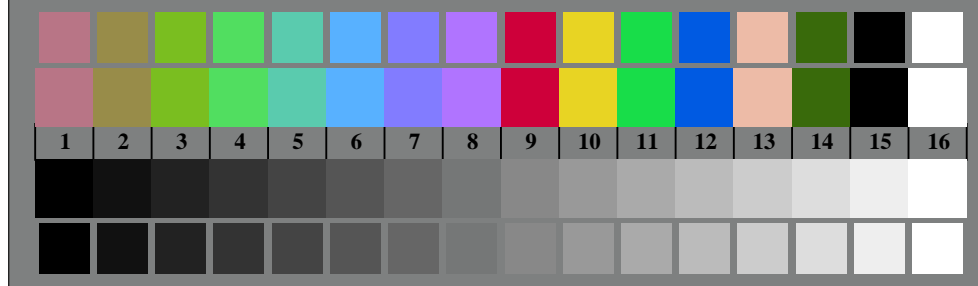
iscrizione TUB: 20190301-AI28/AI28L0FA.TXT/.PS  
Applicazione per la misurazione e la visualizzazione dell'output su display e stampa  
TUB materiale: code=rhata



AI280-3, Fig. B1Wdd: Flower motif, 14 prova colori CIE e 2 + 16 grigio passi (nf); PS operator: *settransfer, 3 colorimage*



AI280-5, Fig. B2Wdd: reticoli radiali W-C<sub>d</sub>; W-M<sub>d</sub>; W-Y<sub>d</sub>; W-N; PS operator: *rgb->rgb<sub>dd</sub> setrgbcolor*



AI280-7, Fig. B3Wdd: 14 prova colori CIE i 2 + 16 grigio passi (sf); *rgb/cmy0->rgb<sub>dd</sub> setrgbcolor*

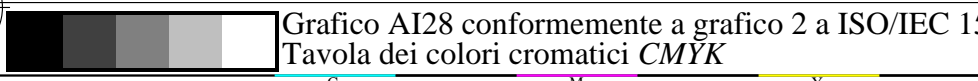
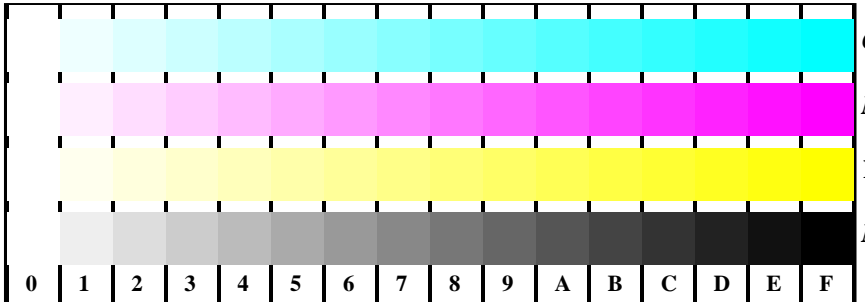
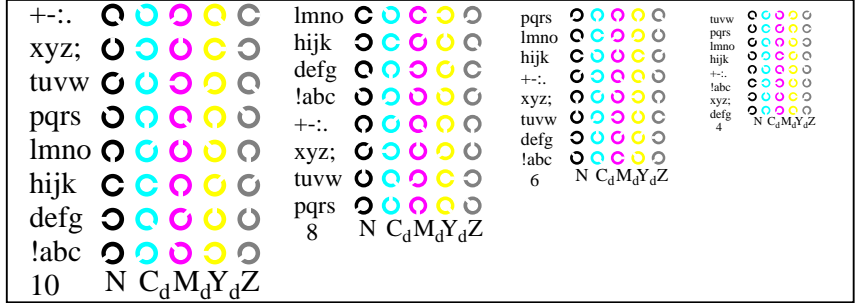


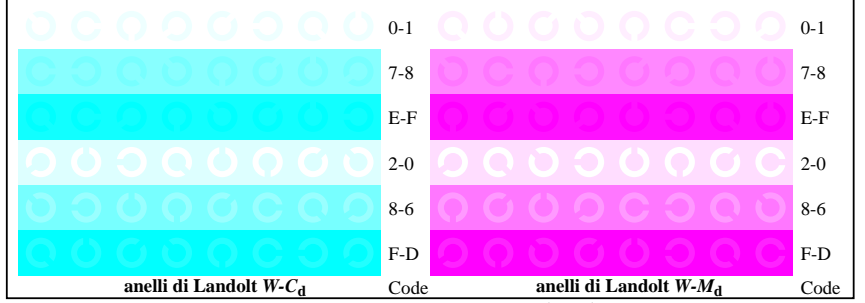
Grafico AI28 conformemente a grafico 2 a ISO/IEC 15775  
Tavola dei colori cromatici CMYK



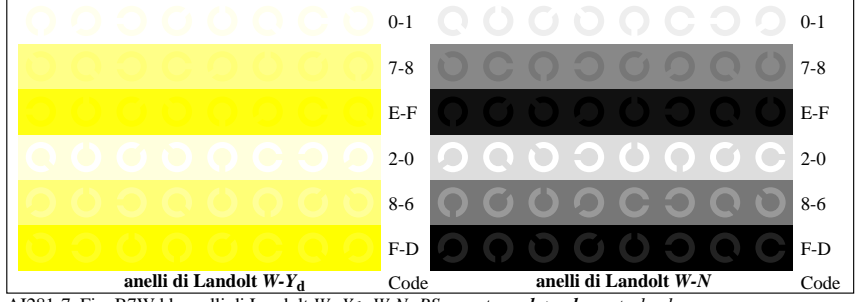
AI281-1, Fig. B4Wdd: 16 equidistante passi W-C<sub>d</sub>; W-M<sub>d</sub>; W-J<sub>d</sub>; W-N; *rgb/cmy0->rgb<sub>dd</sub> setrgbcolor*



AI281-3, Fig. B5Wdd: codice i Landolt anelli N; C<sub>d</sub>; M<sub>d</sub>; Y<sub>d</sub>; Z; PS operator: *rgb->rgb<sub>dd</sub> setrgbcolor*



AI281-5, Fig. B6Wdd: anelli di Landolt W-C<sub>d</sub>; W-M<sub>d</sub>; PS operator: *rgb->rgb<sub>dd</sub> setrgbcolor*



AI281-7, Fig. B7Wdd: anelli di Landolt W-Y<sub>d</sub>; W-N; PS operator: *rgb->rgb<sub>dd</sub> setrgbcolor*

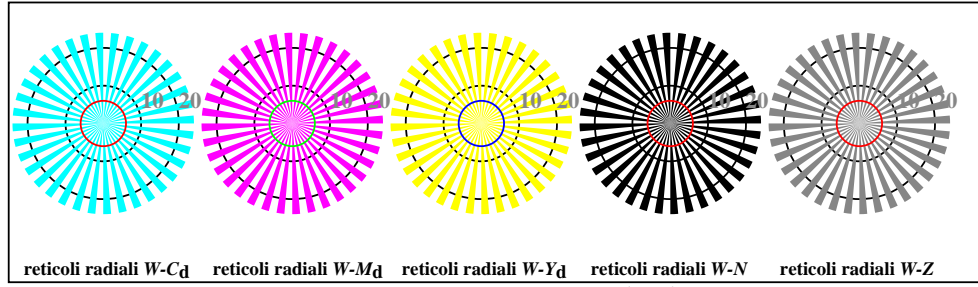
Input: *rgb/cmy0/000n/w set...*  
Output: *->rgb<sub>dd</sub> setrgbcolor*

vedi file simili: <http://standards.iso.org/iso/9241/306/ed-2/AI28/AI28L0FA.TXT /.PS>  
Informazioni tecniche: <http://farbe.it.tu-berlin.de/> o <http://farbe.it.tu-berlin.de/AE.HTM>

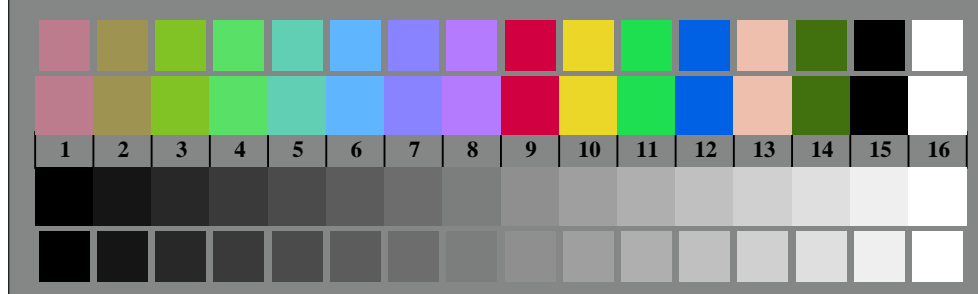
iscrizione TUB: 20190301-AI28/AI28L0FA.TXT /.PS  
Applicazione per la misurazione e la visualizzazione dell'output su display e stampa  
TUB materiale: code=rhata



AI280-3, Fig. B1Wdd: Flower motif, 14 prova colori CIE e 2 + 16 grigio passi (nf); PS operator: *settransfer, 3 colorimage*



AI280-5, Fig. B2Wdd: reticoli radiali W-C<sub>d</sub>; W-M<sub>d</sub>; W-Y<sub>d</sub>; W-N; PS operator: *rgb->rgb<sub>dd</sub> setrgbcolor*



AI280-7, Fig. B3Wdd: 14 prova colori CIE i 2 + 16 grigio passi (sf); *rgb/cmy0->rgb<sub>dd</sub> setrgbcolor*

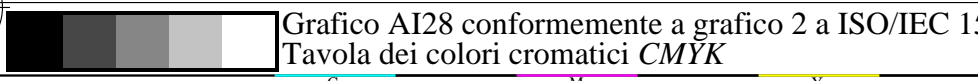
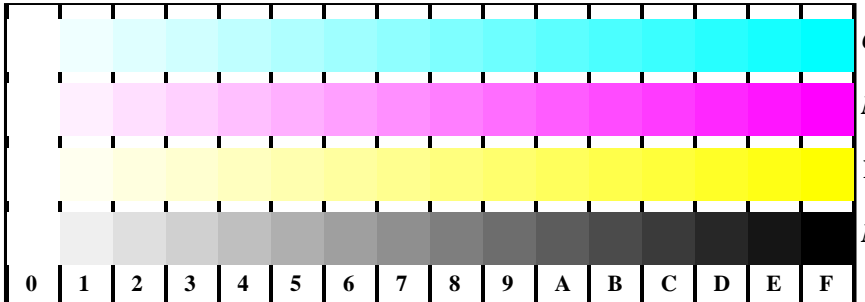
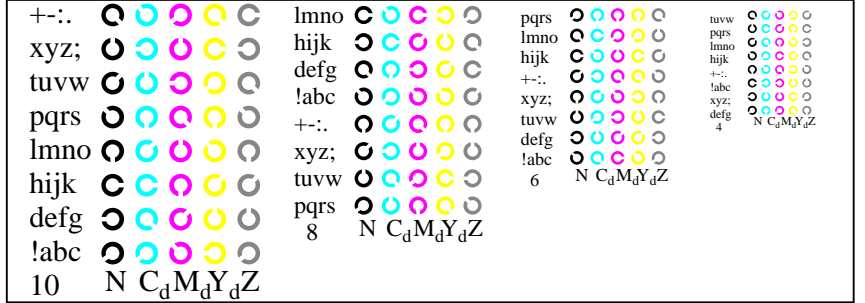


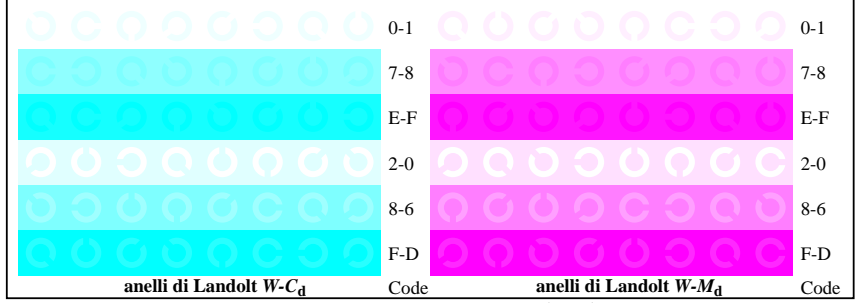
Grafico AI28 conformemente a grafico 2 a ISO/IEC 15775  
Tavola dei colori cromatici CMYK



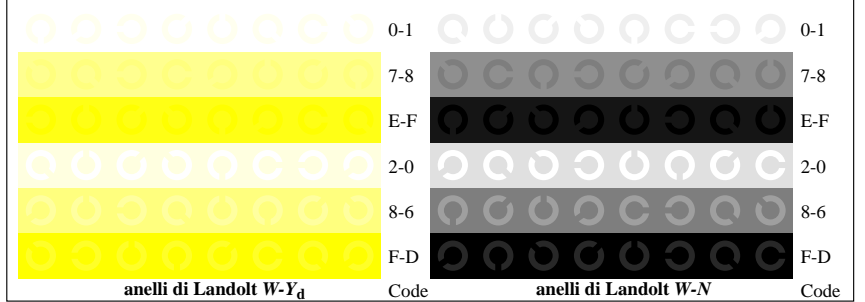
AI281-1, Fig. B4Wdd: 16 equidistante passi W-C<sub>d</sub>; W-M<sub>d</sub>; W-J<sub>d</sub>; W-N; *rgb/cmy0->rgb<sub>dd</sub> setrgbcolor*



AI281-3, Fig. B5Wdd: codice i Landolt anelli N; C<sub>d</sub>; M<sub>d</sub>; Y<sub>d</sub>; Z; PS operator: *rgb->rgb<sub>dd</sub> setrgbcolor*



AI281-5, Fig. B6Wdd: anelli di Landolt W-C<sub>d</sub>; W-M<sub>d</sub>; PS operator: *rgb->rgb<sub>dd</sub> setrgbcolor*



AI281-7, Fig. B7Wdd: anelli di Landolt W-Y<sub>d</sub>; W-N; PS operator: *rgb->rgb<sub>dd</sub> setrgbcolor*

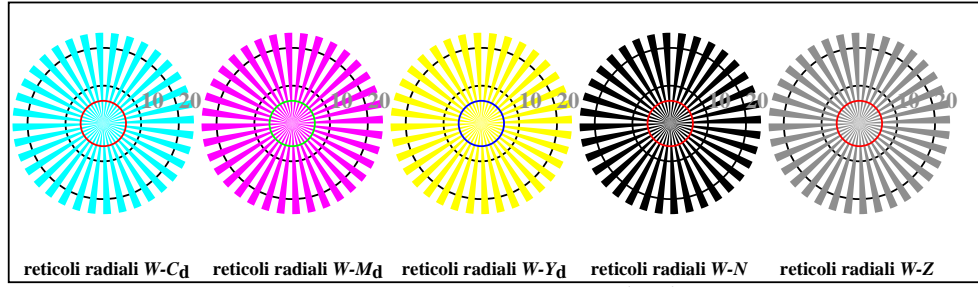
Input: *rgb/cmy0/000n/w set...*  
Output: *->rgb<sub>dd</sub> setrgbcolor*

vedi file simili: <http://standards.iso.org/iso/9241/306/ed-2/AI28/AI28L0FA.TXT/.PS>  
Informazioni tecniche: <http://farbe.it.tu-berlin.de/> o <http://farbe.it.tu-berlin.de/AE.HTM>

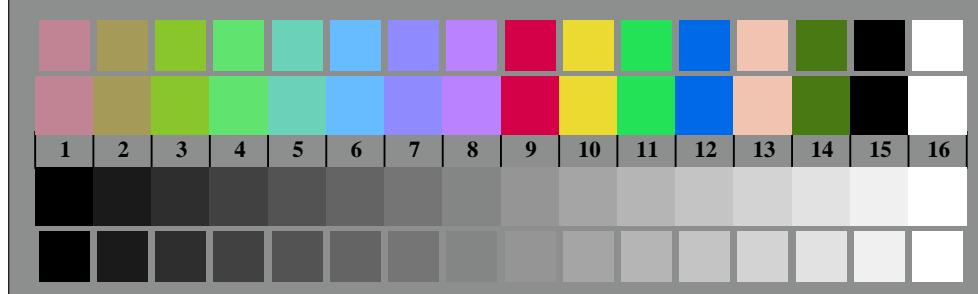
iscrizione TUB: 20190301-AI28/AI28L0FA.TXT/.PS  
Applicazione per la misurazione e la visualizzazione dell'output su display e stampa  
TUB materiale: code=rhata



AI280-3, Fig. B1Wdd: Flower motif, 14 prova colori CIE e 2 + 16 grigio passi (nf); PS operator: *settransfer, 3 colorimage*



AI280-5, Fig. B2Wdd: reticoli radiali W-Cd; W-Md; W-Yd; W-N; PS operator: *rgb->rgb<sub>dd</sub> setrgbcolor*



AI280-7, Fig. B3Wdd: 14 prova colori CIE i 2 + 16 grigio passi (sf); *rgb/cmy0->rgb<sub>dd</sub> setrgbcolor*

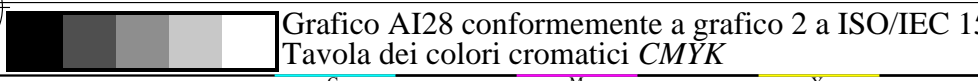
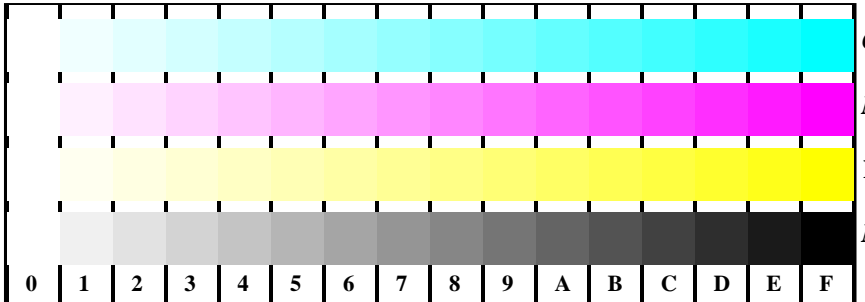
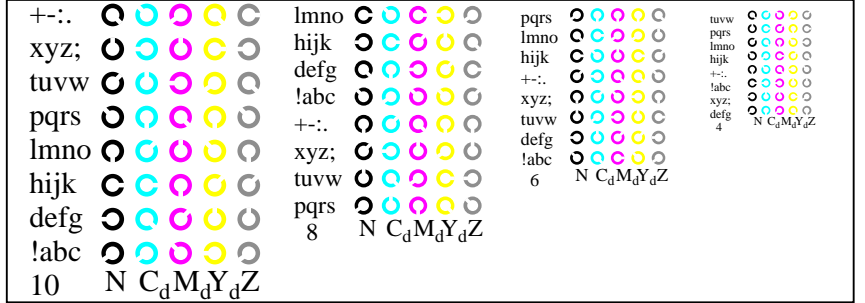


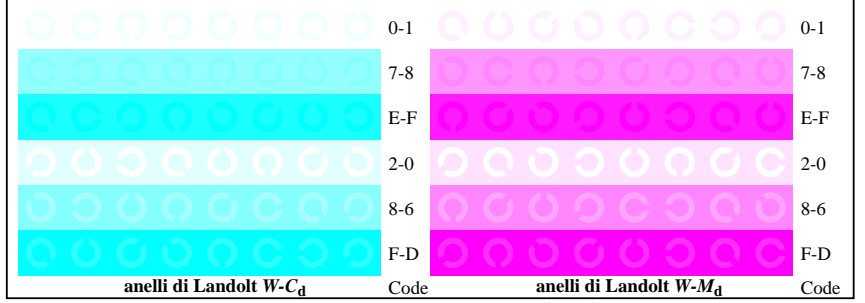
Grafico AI28 conformemente a grafico 2 a ISO/IEC 15775  
Tavola dei colori cromatici CMYK



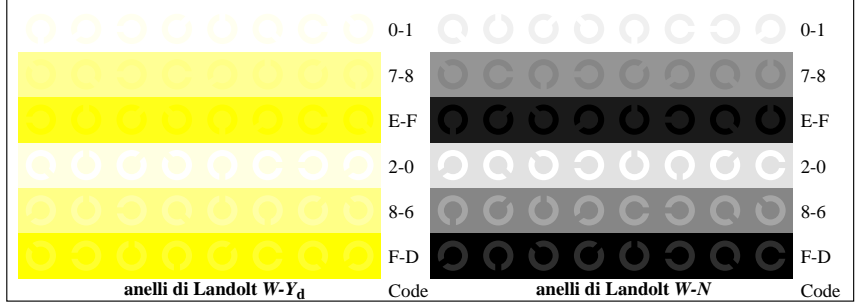
AI281-1, Fig. B4Wdd: 16 equidistante passi W-Cd; W-Md; W-Jd; W-N; *rgb/cmy0->rgb<sub>dd</sub> setrgbcolor*



AI281-3, Fig. B5Wdd: codice i Landolt anelli N; Cd; Md; Yd; Z; PS operator: *rgb->rgb<sub>dd</sub> setrgbcolor*



AI281-5, Fig. B6Wdd: anelli di Landolt W-Cd; W-Md; PS operator: *rgb->rgb<sub>dd</sub> setrgbcolor*



AI281-7, Fig. B7Wdd: anelli di Landolt W-Yd; W-N; PS operator: *rgb->rgb<sub>dd</sub> setrgbcolor*

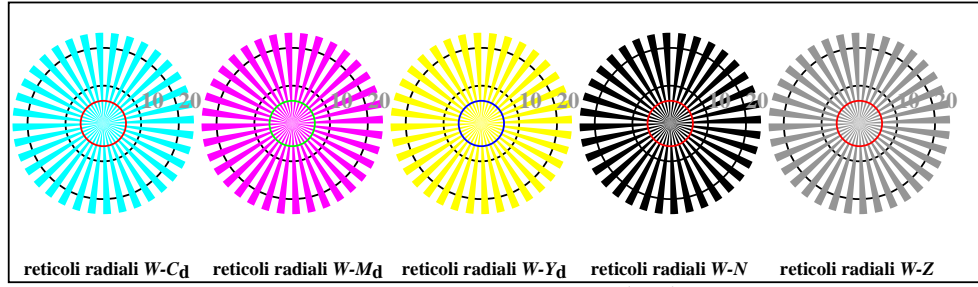
Input: *rgb/cmy0/000n/w set...*  
Output: *->rgb<sub>dd</sub> setrgbcolor*

vedì file simili: <http://standards.iso.org/iso/9241/306/ed-2/AI28/AI28L0FA.TXT /.PS>  
 Informazioni tecniche: <http://farbe.it.tu-berlin.de/> o <http://farbe.it.tu-berlin.de/AE.HTM>

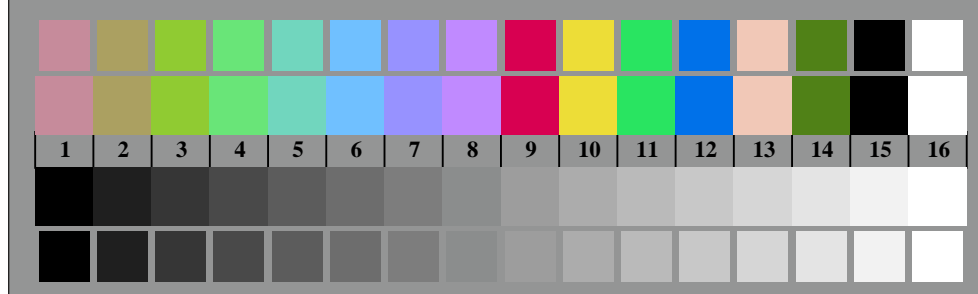
iscrizione TUB: 20190301-AI28/AI28L0FA.TXT /.PS  
 Applicazione per la misurazione e la visualizzazione dell'output su display e stampa  
 TUB materiale: code=rhata



AI280-3, Fig. B1Wdd: Flower motif, 14 prova colori CIE e 2 + 16 grigio passi (nf); PS operator: *settransfer, 3 colorimage*



AI280-5, Fig. B2Wdd: reticoli radiali W-C<sub>d</sub>; W-M<sub>d</sub>; W-Y<sub>d</sub>; W-N; PS operator: *rgb->rgb<sub>dd</sub> setrgbcolor*



AI280-7, Fig. B3Wdd: 14 prova colori CIE i 2 + 16 grigio passi (sf); *rgb/cmy0->rgb<sub>dd</sub> setrgbcolor*

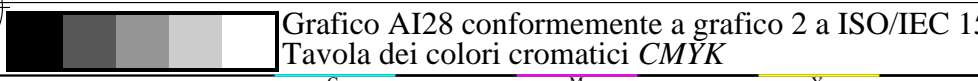
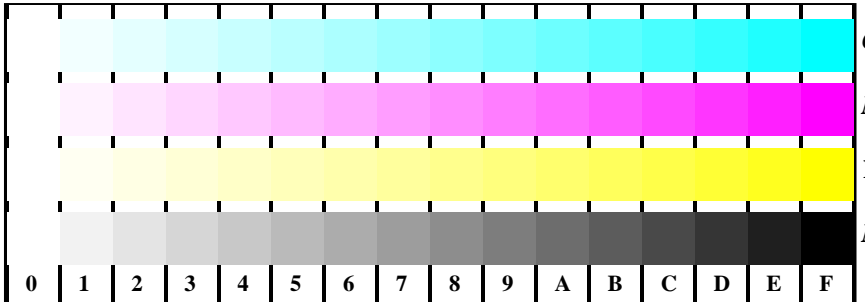
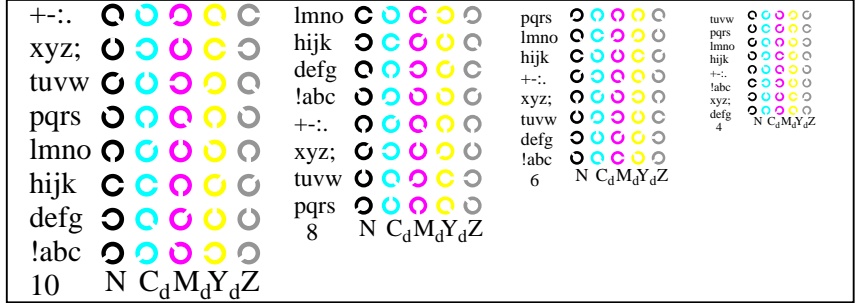


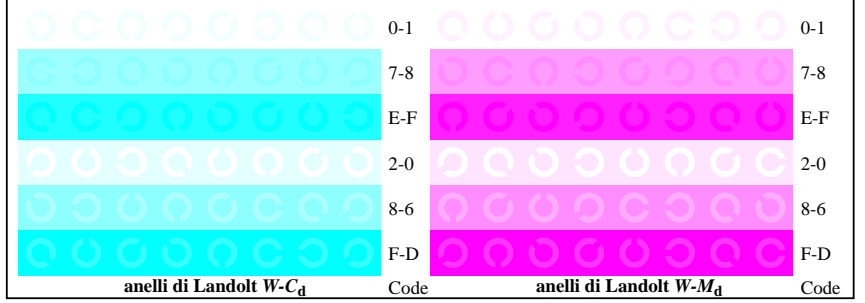
Grafico AI28 conformemente a grafico 2 a ISO/IEC 15775  
 Tavola dei colori cromatici CMYK



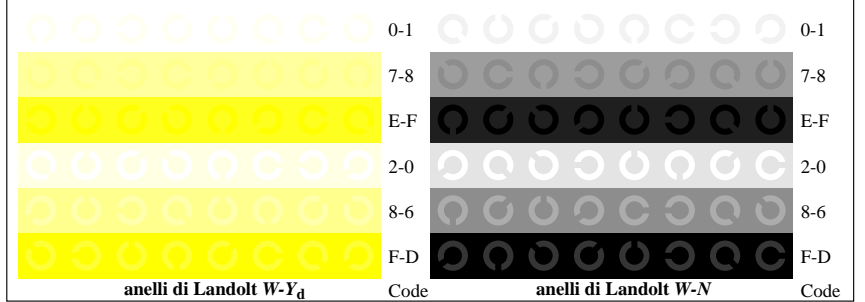
AI281-1, Fig. B4Wdd: 16 equidistante passi W-C<sub>d</sub>; W-M<sub>d</sub>; W-J<sub>d</sub>; W-N; *rgb/cmy0->rgb<sub>dd</sub> setrgbcolor*



AI281-3, Fig. B5Wdd: codice i Landolt anelli N; C<sub>d</sub>; M<sub>d</sub>; Y<sub>d</sub>; Z; PS operator: *rgb->rgb<sub>dd</sub> setrgbcolor*



AI281-5, Fig. B6Wdd: anelli di Landolt W-C<sub>d</sub>; W-M<sub>d</sub>; PS operator: *rgb->rgb<sub>dd</sub> setrgbcolor*



AI281-7, Fig. B7Wdd: anelli di Landolt W-Y<sub>d</sub>; W-N; PS operator: *rgb->rgb<sub>dd</sub> setrgbcolor*

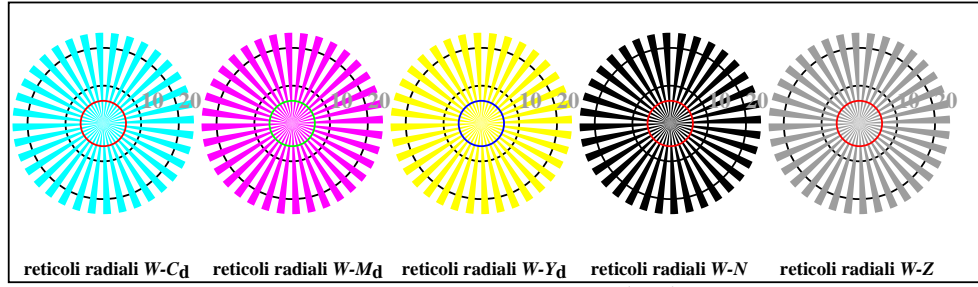
Input: *rgb/cmy0/000n/w set...*  
 Output: *->rgb<sub>dd</sub> setrgbcolor*

vedi file simili: <http://standards.iso.org/iso/9241/306/ed-2/AI28/AI28L0FA.TXT/.PS>  
Informazioni tecniche: <http://farbe.it.tu-berlin.de/> o <http://farbe.it.tu-berlin.de/AE.HTM>

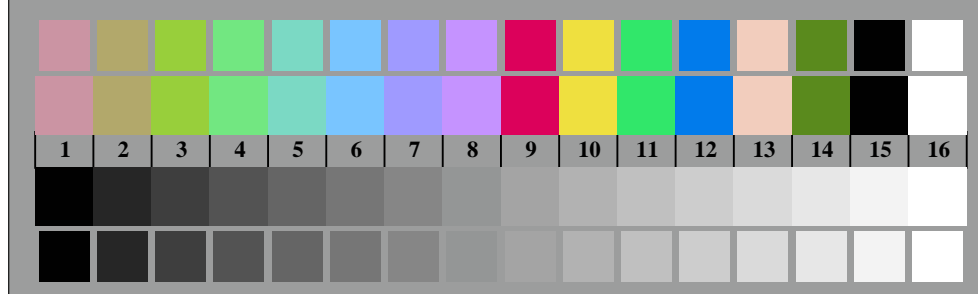
iscrizione TUB: 20190301-AI28/AI28L0FA.TXT/.PS  
Applicazione per la misurazione e la visualizzazione dell'output su display e stampa  
TUB materiale: code=rhata



AI280-3, Fig. B1Wdd: Flower motif, 14 prova colori CIE e 2 + 16 grigio passi (nf); PS operator: *settransfer, 3 colorimage*



AI280-5, Fig. B2Wdd: reticoli radiali W-Cd; W-Md; W-Yd; W-N; PS operator: *rgb->rgb<sub>dd</sub> setrgbcolor*



AI280-7, Fig. B3Wdd: 14 prova colori CIE i 2 + 16 grigio passi (sf); *rgb/cmy0->rgb<sub>dd</sub> setrgbcolor*

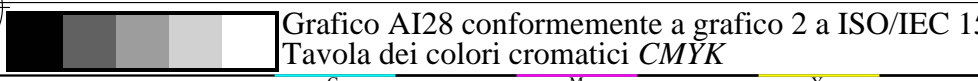
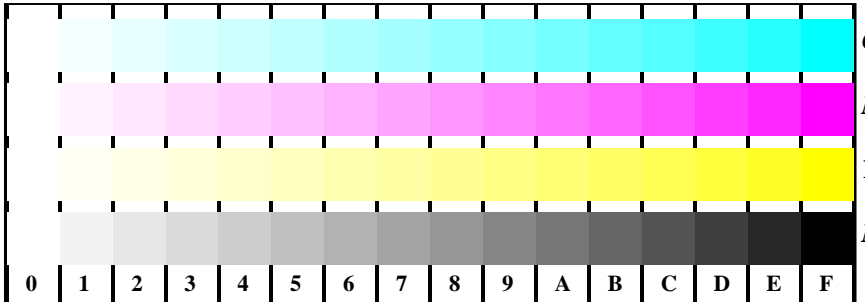
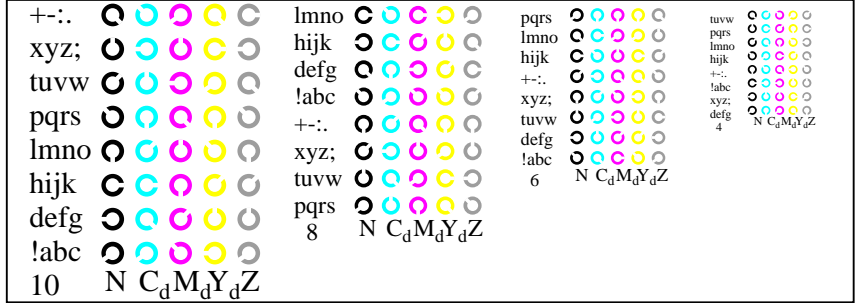


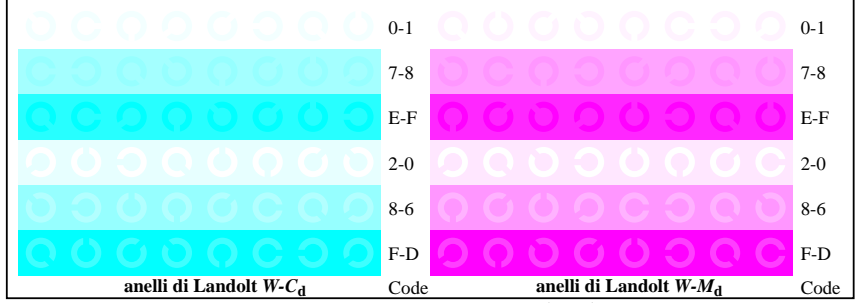
Grafico AI28 conformemente a grafico 2 a ISO/IEC 15775  
Tavola dei colori cromatici CMYK



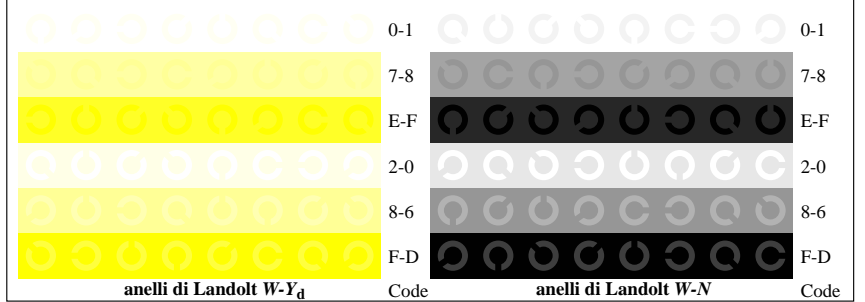
AI281-1, Fig. B4Wdd: 16 equidistante passi W-Cd; W-Md; W-Jd; W-N; *rgb/cmy0->rgb<sub>dd</sub> setrgbcolor*



AI281-3, Fig. B5Wdd: codice i Landolt anelli N; Cd; Md; Yd; Z; PS operator: *rgb->rgb<sub>dd</sub> setrgbcolor*



AI281-5, Fig. B6Wdd: anelli di Landolt W-Cd; W-Md; PS operator: *rgb->rgb<sub>dd</sub> setrgbcolor*



AI281-7, Fig. B7Wdd: anelli di Landolt W-Yd; W-N; PS operator: *rgb->rgb<sub>dd</sub> setrgbcolor*

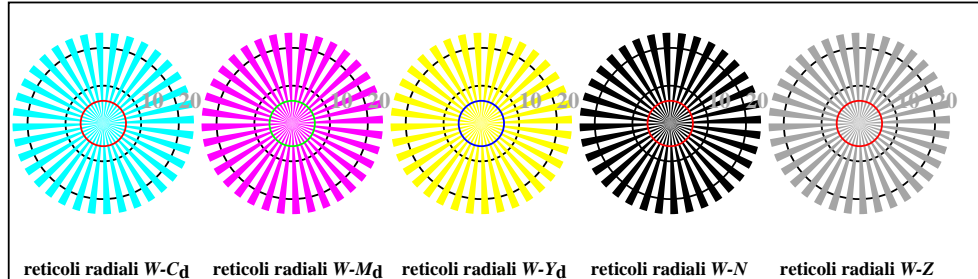
Input: *rgb/cmy0/000n/w set...*  
Output: *->rgb<sub>dd</sub> setrgbcolor*

vedì file simili: <http://standards.iso.org/iso/9241/306/ed-2/AI28/AI28L0FA.TXT /.PS>  
 Informazioni tecniche: <http://farbe.it.tu-berlin.de/> o <http://farbe.it.tu-berlin.de/AE.HTM>

iscrizione TUB: 20190301-AI28/AI28L0FA.TXT /.PS  
 Applicazione per la misurazione e la visualizzazione dell'output su display e stampa  
 TUB materiale: code=rhata



AI280-3, Fig. B1Wdd: Flower motif, 14 prova colori CIE e 2 + 16 grigio passi (nf); PS operator: *settransfer, 3 colorimage*



AI280-5, Fig. B2Wdd: reticoli radiali W-C<sub>d</sub>; W-M<sub>d</sub>; W-Y<sub>d</sub>; W-N; PS operator: *rgb->rgb<sub>dd</sub> setrgbcolor*



AI280-7, Fig. B3Wdd: 14 prova colori CIE i 2 + 16 grigio passi (sf); *rgb/cmy0->rgb<sub>dd</sub> setrgbcolor*

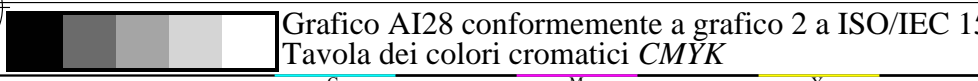
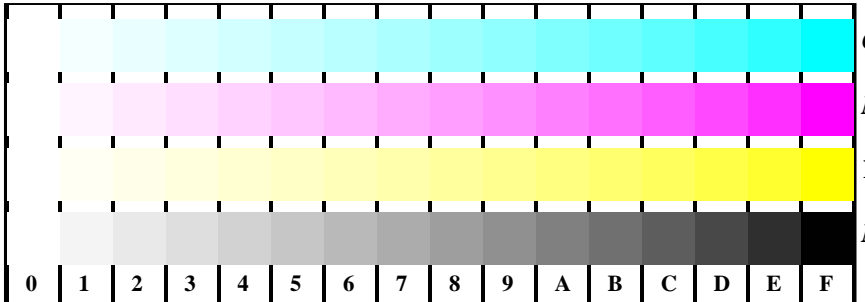
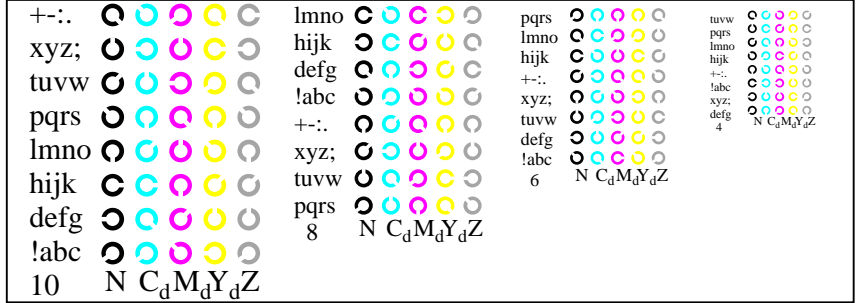


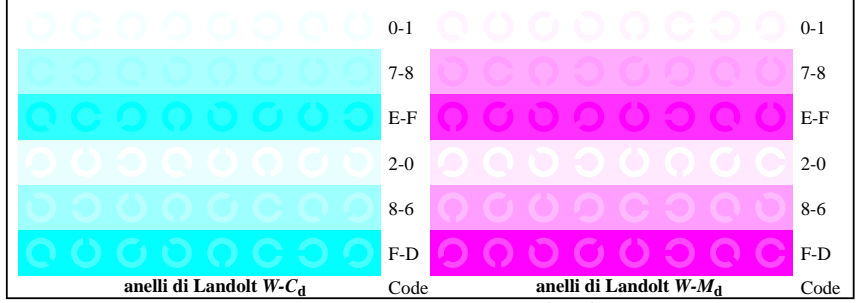
Grafico AI28 conformemente a grafico 2 a ISO/IEC 15775  
 Tavola dei colori cromatici CMYK



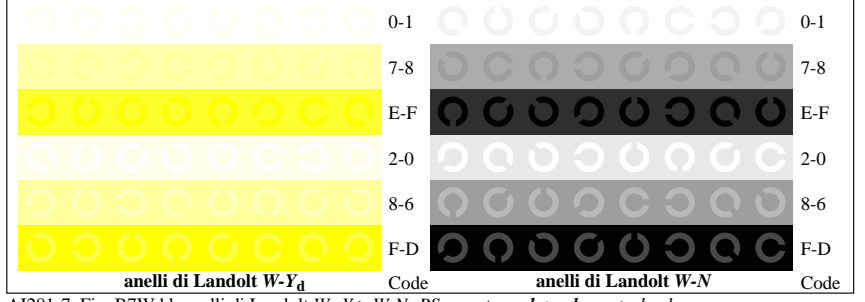
AI281-1, Fig. B4Wdd: 16 equidistante passi W-C<sub>d</sub>; W-M<sub>d</sub>; W-J<sub>d</sub>; W-N; *rgb/cmy0->rgb<sub>dd</sub> setrgbcolor*



AI281-3, Fig. B5Wdd: codice i Landolt anelli N; C<sub>d</sub>; M<sub>d</sub>; Y<sub>d</sub>; Z; PS operator: *rgb->rgb<sub>dd</sub> setrgbcolor*



AI281-5, Fig. B6Wdd: anelli di Landolt W-C<sub>d</sub>; W-M<sub>d</sub>; PS operator: *rgb->rgb<sub>dd</sub> setrgbcolor*



AI281-7, Fig. B7Wdd: anelli di Landolt W-Y<sub>d</sub>; W-N; PS operator: *rgb->rgb<sub>dd</sub> setrgbcolor*

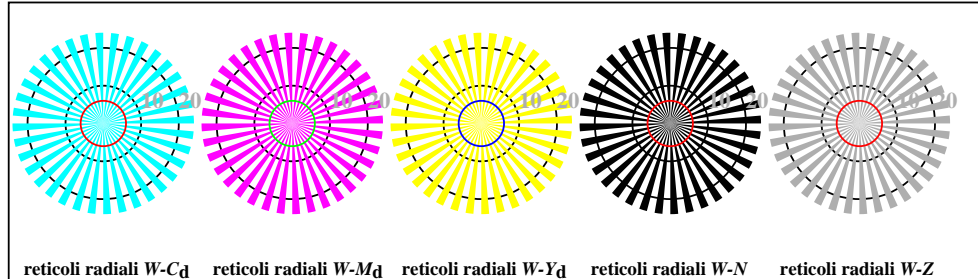
Input: *rgb/cmy0/000n/w set...*  
 Output: *->rgb<sub>dd</sub> setrgbcolor*

vedì file simili: <http://standards.iso.org/iso/9241/306/ed-2/AI28/AI28L0FA.TXT /.PS>  
 Informazioni tecniche: <http://farbe.it.tu-berlin.de/> o <http://farbe.it.tu-berlin.de/AE.HTM>

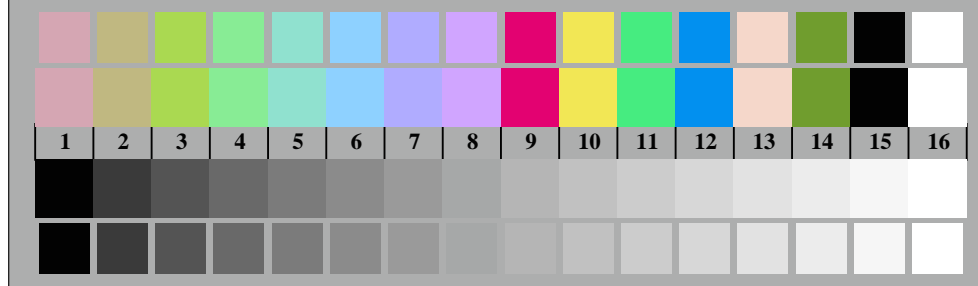
iscrizione TUB: 20190301-AI28/AI28L0FA.TXT /.PS  
 Applicazione per la misurazione e la visualizzazione dell'output su display e stampa  
 TUB materiale: code=rhata



AI280-3, Fig. B1Wdd: Flower motif, 14 prova colori CIE e 2 + 16 grigio passi (nf); PS operator: *settransfer, 3 colorimage*



AI280-5, Fig. B2Wdd: reticoli radiali W-Cd; W-Md; W-Yd; W-N; PS operator: *rgb->rgb<sub>dd</sub> setrgbcolor*



AI280-7, Fig. B3Wdd: 14 prova colori CIE i 2 + 16 grigio passi (sf); *rgb/cmy0->rgb<sub>dd</sub> setrgbcolor*

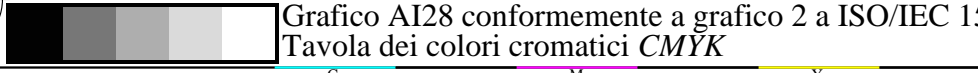
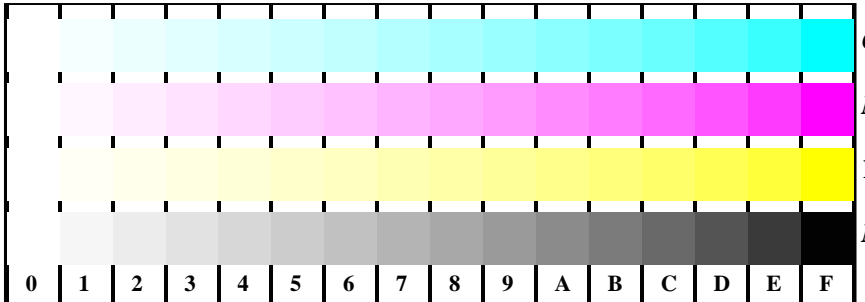
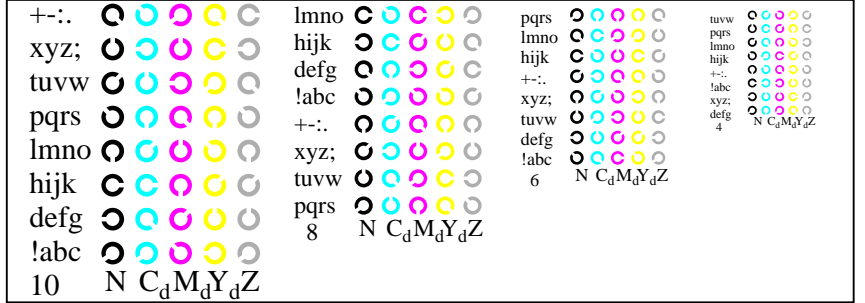


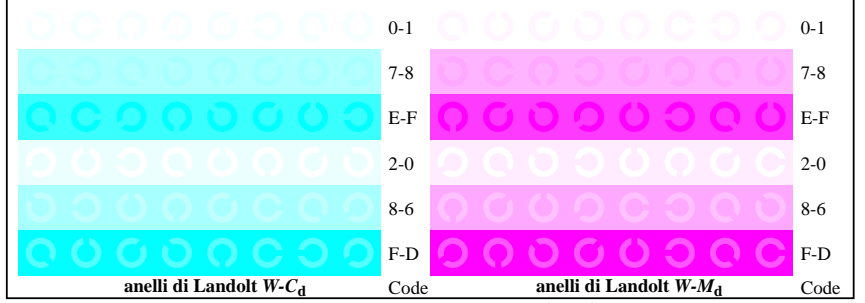
Grafico AI28 conformemente a grafico 2 a ISO/IEC 15775  
 Tavola dei colori cromatici CMYK



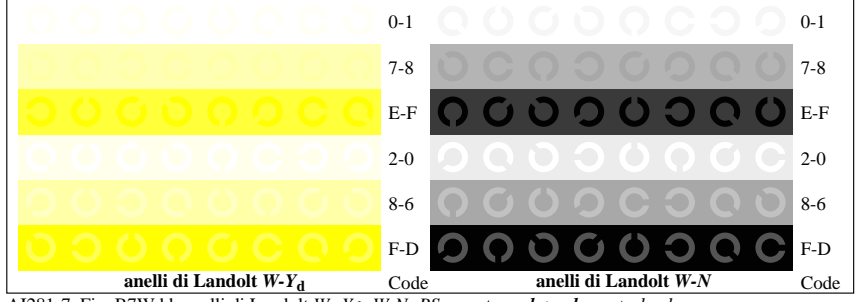
AI281-1, Fig. B4Wdd: 16 equidistante passi W-Cd; W-Md; W-Jd; W-N; *rgb/cmy0->rgb<sub>dd</sub> setrgbcolor*



AI281-3, Fig. B5Wdd: codice i Landolt anelli N; Cd; Md; Yd; Z; PS operator: *rgb->rgb<sub>dd</sub> setrgbcolor*



AI281-5, Fig. B6Wdd: anelli di Landolt W-Cd; W-Md; PS operator: *rgb->rgb<sub>dd</sub> setrgbcolor*



AI281-7, Fig. B7Wdd: anelli di Landolt W-Yd; W-N; PS operator: *rgb->rgb<sub>dd</sub> setrgbcolor*

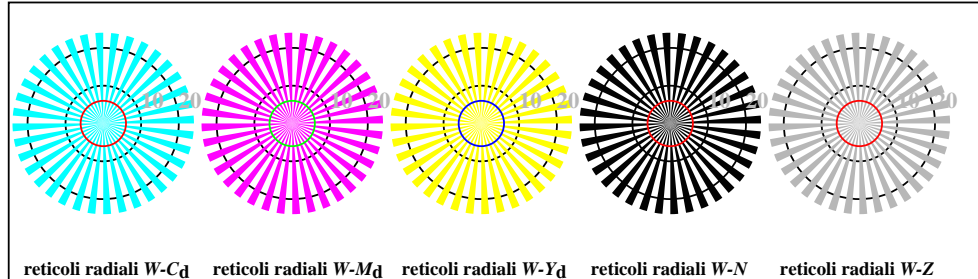
Input: *rgb/cmy0/000n/w set...*  
 Output: *->rgb<sub>dd</sub> setrgbcolor*

vedi file simili: <http://standards.iso.org/iso/9241/306/ed-2/AI28/AI28L0FA.TXT/.PS>  
Informazioni tecniche: <http://farbe.it.tu-berlin.de/> o <http://farbe.it.tu-berlin.de/AE.HTM>

iscrizione TUB: 20190301-AI28/AI28L0FA.TXT/.PS  
Applicazione per la misurazione e la visualizzazione dell'output su display e stampa  
TUB materiale: code=rhata



AI280-3, Fig. B1Wdd: Flower motif, 14 prova colori CIE e 2 + 16 grigio passi (nf); PS operator: *settransfer, 3 colorimage*



AI280-5, Fig. B2Wdd: reticoli radiali W-Cd; W-Md; W-Yd; W-N; PS operator: *rgb->rgb<sub>dd</sub> setrgbcolor*



AI280-7, Fig. B3Wdd: 14 prova colori CIE i 2 + 16 grigio passi (sf); *rgb/cmy0->rgb<sub>dd</sub> setrgbcolor*

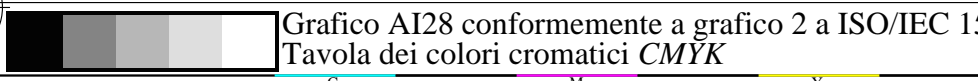
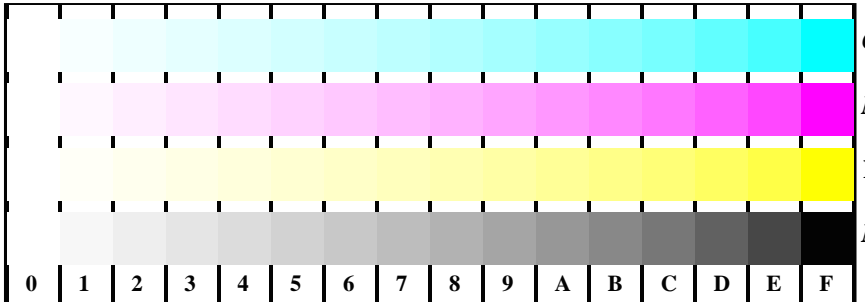
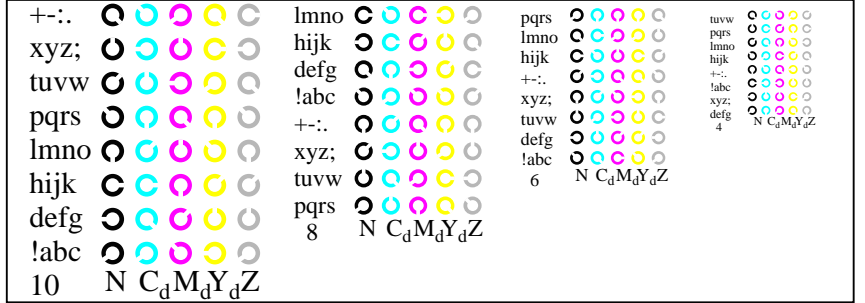


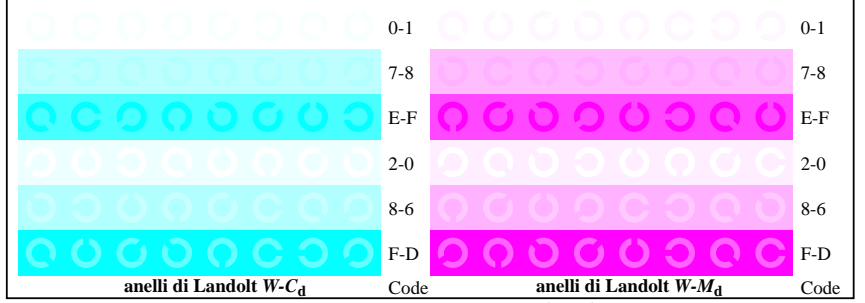
Grafico AI28 conformemente a grafico 2 a ISO/IEC 15775  
Tavola dei colori cromatici CMYK



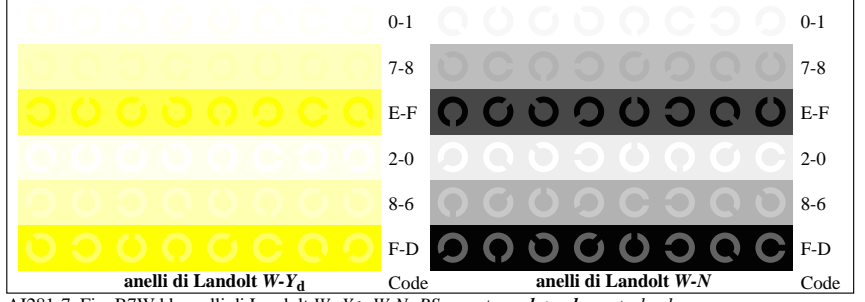
AI281-1, Fig. B4Wdd: 16 equidistante passi W-Cd; W-Md; W-Jd; W-N; *rgb/cmy0->rgb<sub>dd</sub> setrgbcolor*



AI281-3, Fig. B5Wdd: codice i Landolt anelli N; Cd; Md; Yd; Z; PS operator: *rgb->rgb<sub>dd</sub> setrgbcolor*



AI281-5, Fig. B6Wdd: anelli di Landolt W-Cd; W-Md; PS operator: *rgb->rgb<sub>dd</sub> setrgbcolor*



AI281-7, Fig. B7Wdd: anelli di Landolt W-Yd; W-N; PS operator: *rgb->rgb<sub>dd</sub> setrgbcolor*

Input: *rgb/cmy0/000n/w set...*  
Output: *->rgb<sub>dd</sub> setrgbcolor*