

vedi file simili: <http://standards.iso.org/iso/9241/306/ed-2/AI28/AI28L0NP.PDF>  
 informazioni tecniche: <http://farbe.it-tu-berlin.de/> o <http://farbe.it-tu-berlin.de/AE.HTM>

iscrizione TUB: 20190301-AI28/AI28L0NP.PDF /.PS  
 Applicazione per la misurazione e la visualizzazione dell'output su display e stampa  
 TUB materiale: code=rh4ta

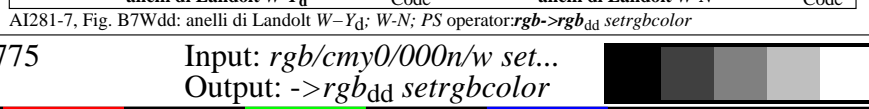
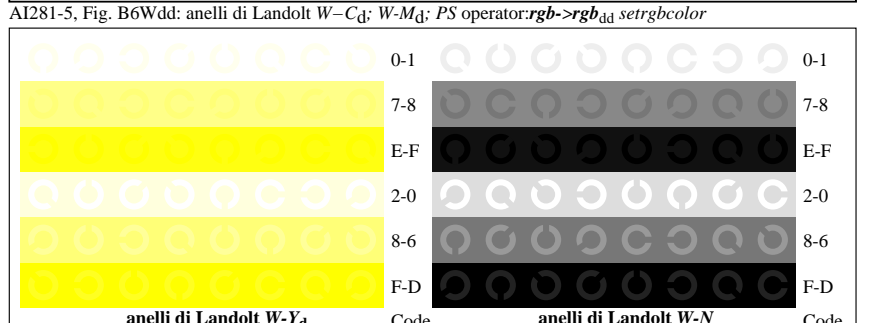
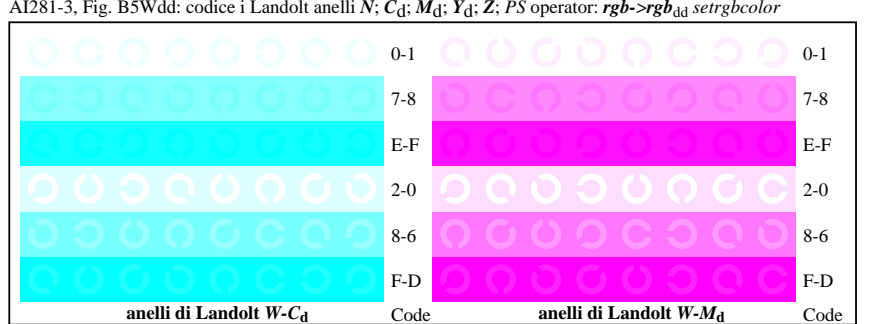
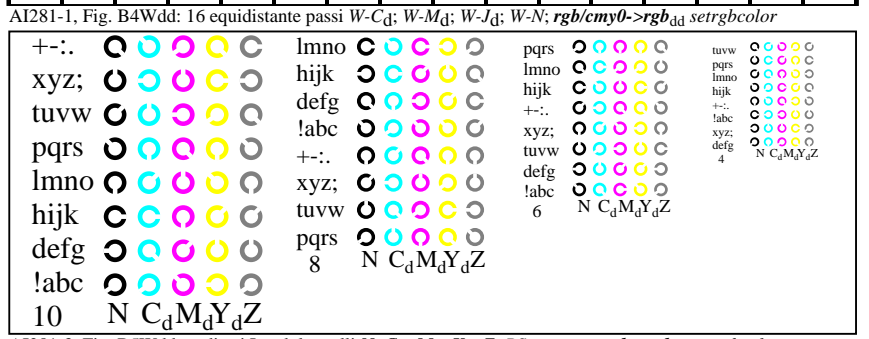
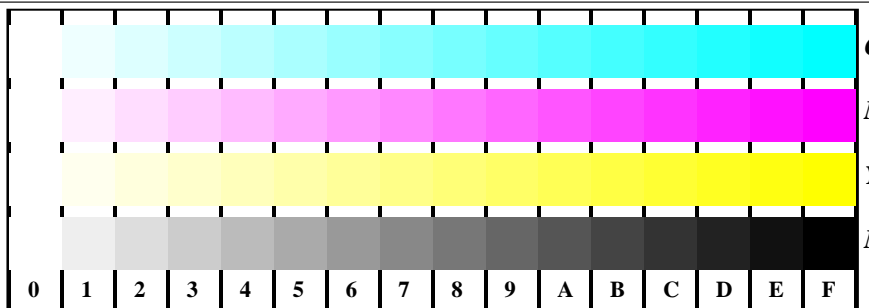
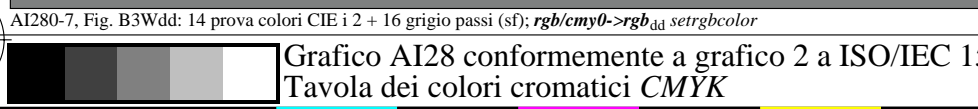
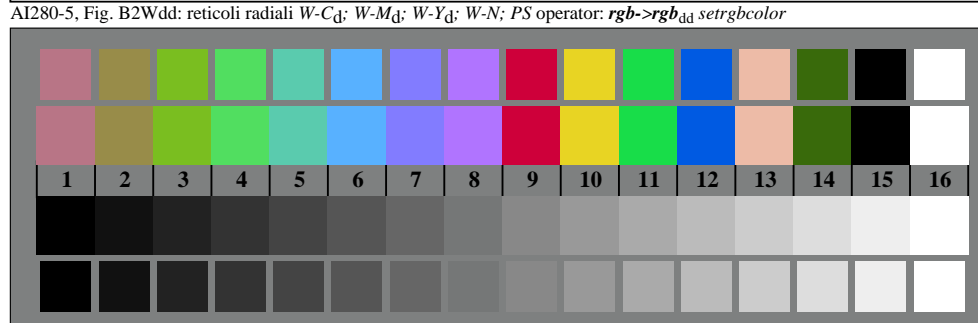
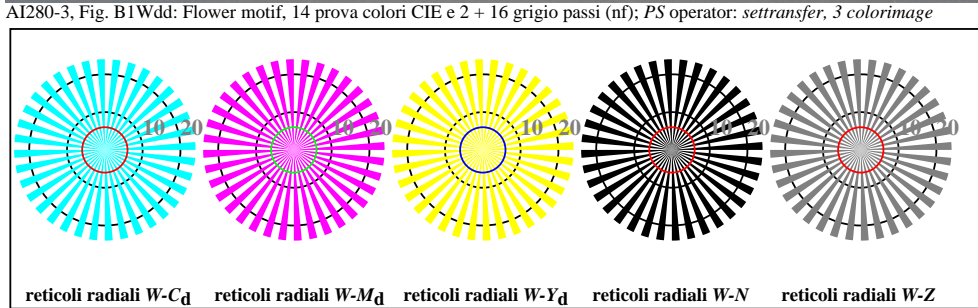
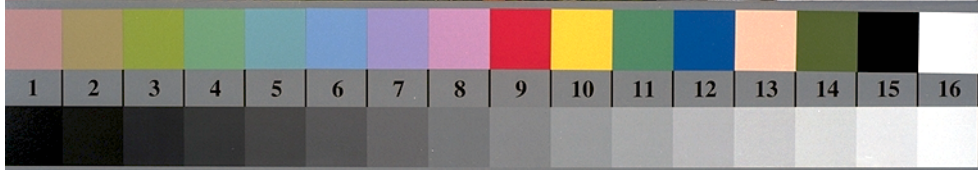


Grafico AI28 conformemente a grafico 2 a ISO/IEC 15775  
 Tavola dei colori cromatici CMYK

Input: *rgb/cmy0/000n/w set...*  
 Output: *->rgb<sub>dd</sub> setrgbcolor*

