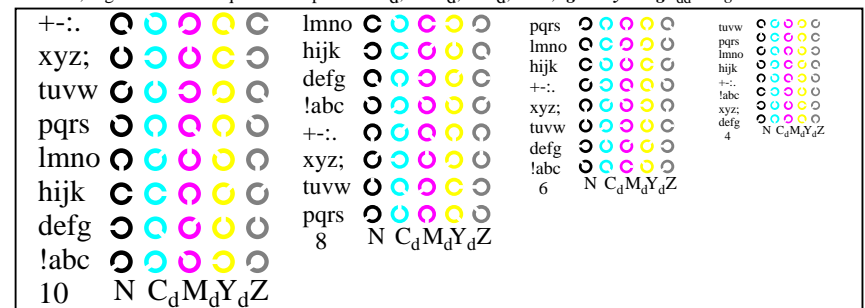
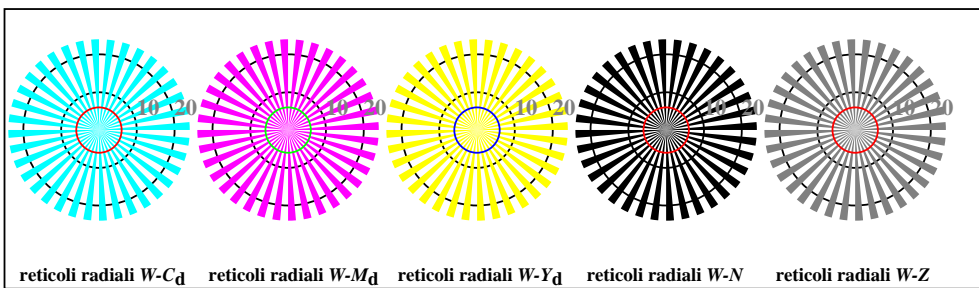




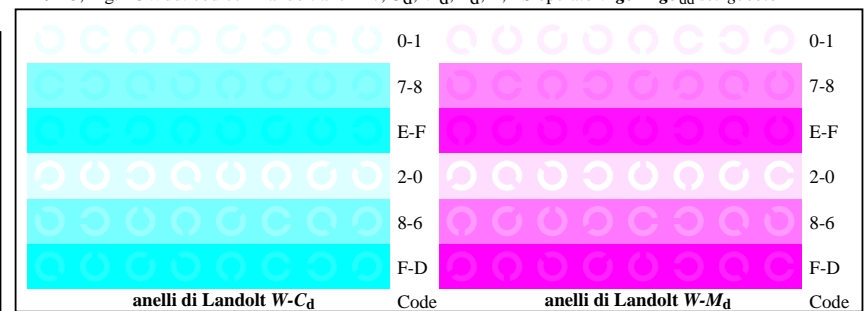
AI291-1, Fig. B4Wdd: 16 equidistante passi $W-C_d$; $W-M_d$; $W-J_d$; $W-N$; $rgb/cmy0 \rightarrow rgb_{dd}$ setrgbcolor



AI291-3, Fig. B5Wdd: codice i Landolt anelli N ; C_d ; M_d ; Y_d ; Z ; PS operator: $rgb \rightarrow rgb_{dd}$ setrgbcolor



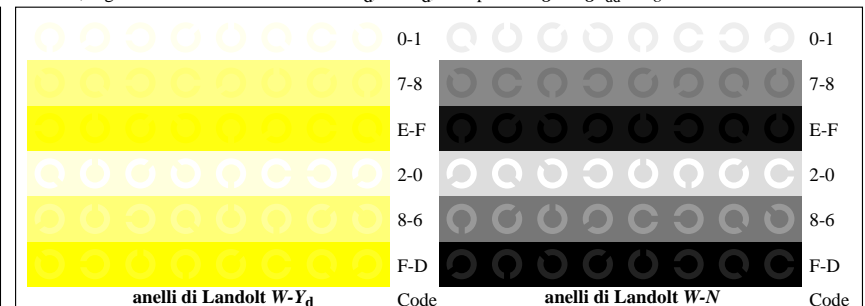
AI290-5, Fig. B2Wdd: reticoli radiali $W-C_d$; $W-M_d$; $W-Y_d$; $W-N$; PS operator: $rgb \rightarrow rgb_{dd}$ setrgbcolor



AI291-5, Fig. B6Wdd: anelli di Landolt $W-C_d$; $W-M_d$; PS operator: $rgb \rightarrow rgb_{dd}$ setrgbcolor



AI290-7, Fig. B3Wdd: 14 prova colori CIE i 2 + 16 grigio passi (sf); $rgb/cmy0 \rightarrow rgb_{dd}$ setrgbcolor



AI291-7, Fig. B7Wdd: anelli di Landolt $W-Y_d$; $W-N$; PS operator: $rgb \rightarrow rgb_{dd}$ setrgbcolor