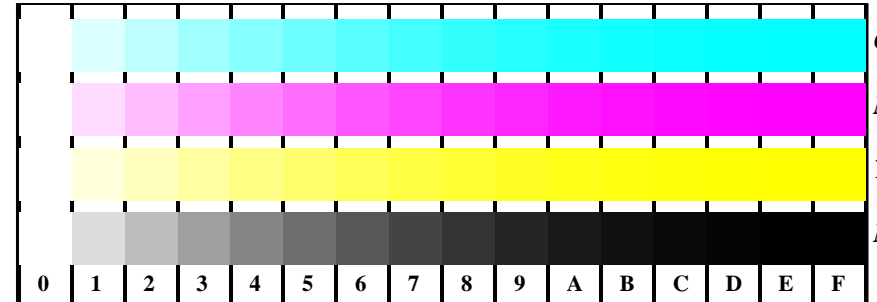
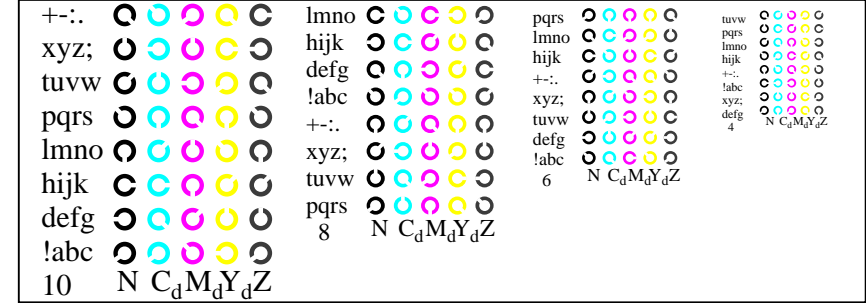


vedidi file simili: <http://farbe.li.tu-berlin.de/AI29/AI29.HTM>
 Informazioni tecniche: <http://farbe.li.tu-berlin.de/ohttp://farbe.li.tu-berlin.de/AE.HTM>

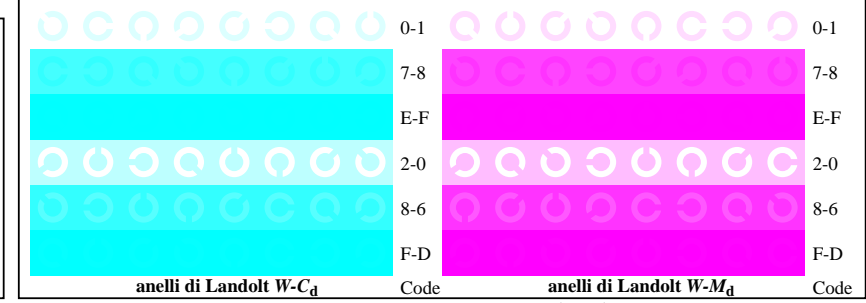
iscrizione TUB: 20190301-AI29/AI29L0FA.TXT /.PS
 Applicazione per la misura dell'output di display et output di stampa
 TUB materiale: code=rhata



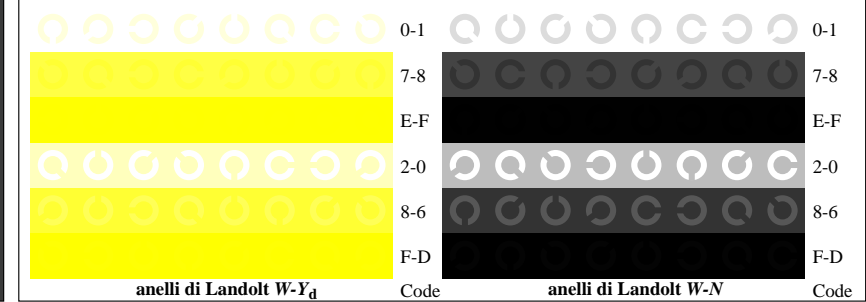
AI291-1, Fig. B4Wdd: 16 equidistante passi W-C_d; W-M_d; W-Y_d; W-N; *rgb/cmy0->rgb_{dd} setrgbcolor*



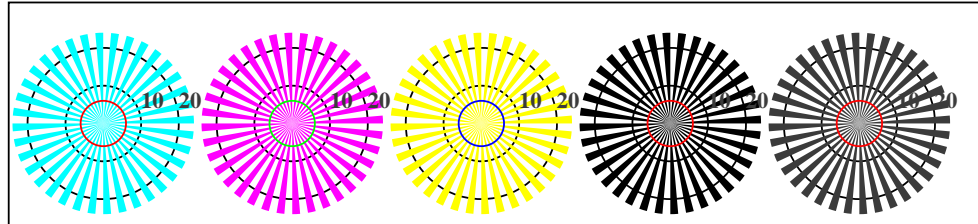
AI291-3, Fig. B5Wdd: codice i Landolt anelli N; C_d; M_d; Y_d; Z; PS operator: *rgb->rgb_{dd} setrgbcolor*



AI291-5, Fig. B6Wdd: anelli di Landolt W-C_d; W-M_d; PS operator: *rgb->rgb_{dd} setrgbcolor*

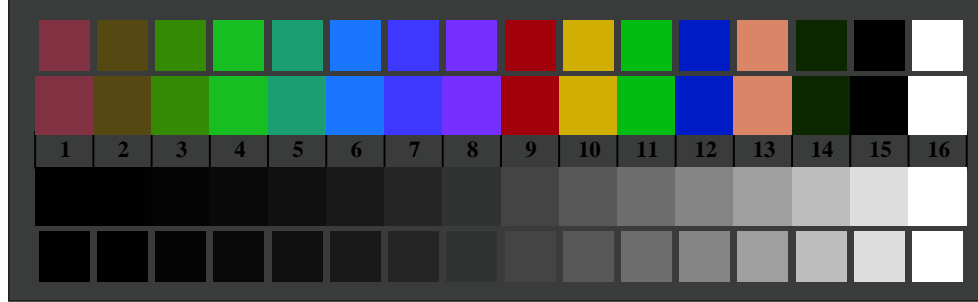


AI291-7, Fig. B7Wdd: anelli di Landolt W-Y_d; W-N; PS operator: *rgb->rgb_{dd} setrgbcolor*



reticoli radiali W-C_d reticoli radiali W-M_d reticoli radiali W-Y_d reticoli radiali W-N reticoli radiali W-Z

AI290-5, Fig. B2Wdd: reticoli radiali W-C_d; W-M_d; W-Y_d; W-N; PS operator: *rgb->rgb_{dd} setrgbcolor*



AI290-7, Fig. B3Wdd: 14 prova colori CIE i 2 + 16 grigio passi (sf); *rgb/cmy0->rgb_{dd} setrgbcolor*

Grafico AI29 conformemente a grafico 2 a ISO/IEC 15775
 Tavola dei colori cromatici CMYK

Input: *rgb/cmy0/000n/w set...*
 Output: *->rgb_{dd} setrgbcolor*