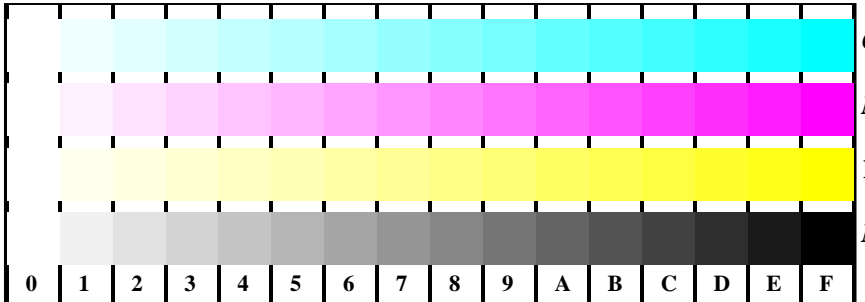
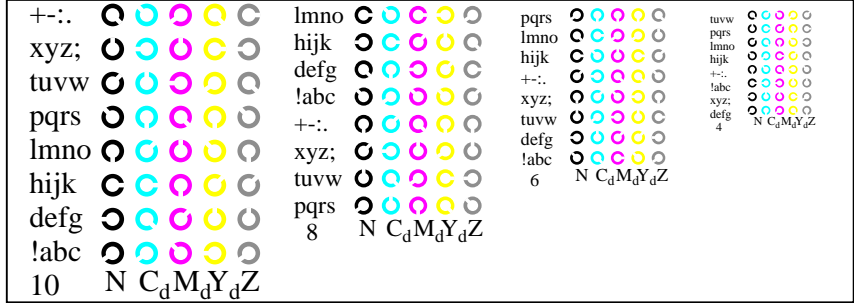


vedidi file simili: <http://farbe.li.tu-berlin.de/AI29/AI29.HTM>
 Informazioni tecniche: <http://farbe.li.tu-berlin.de/ohttp://farbe.li.tu-berlin.de/AE.HTM>

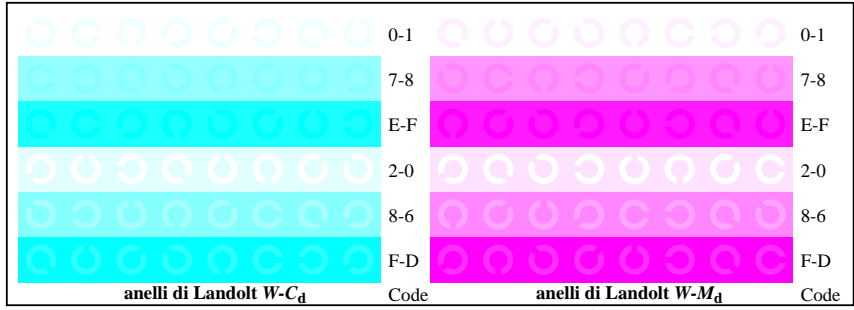
iscrizione TUB: 20190301-AI29/AI29L0FA.TXT /.PS
 Applicazione per la misura dell'output di display et output di stampa
 TUB materiale: code=rhata



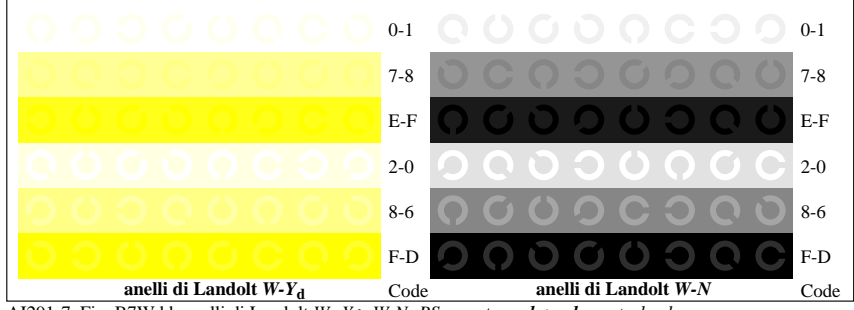
AI291-1, Fig. B4Wdd: 16 equidistante passi $W-C_d$; $W-M_d$; $W-J_d$; $W-N$; $rgb/cmy0 \rightarrow rgb_{dd}$ setrgbcolor



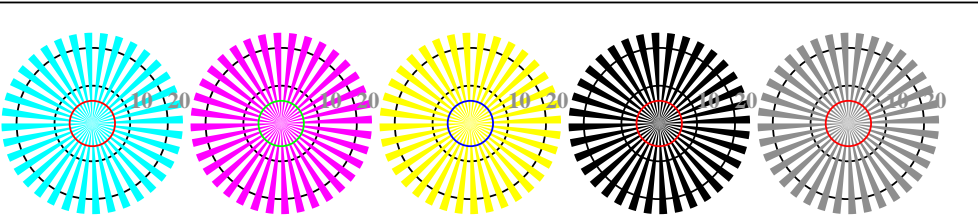
AI291-3, Fig. B5Wdd: codice i Landolt anelli N ; C_d ; M_d ; Y_d ; Z ; PS operator: $rgb \rightarrow rgb_{dd}$ setrgbcolor



AI291-5, Fig. B6Wdd: anelli di Landolt $W-C_d$; $W-M_d$; PS operator: $rgb \rightarrow rgb_{dd}$ setrgbcolor

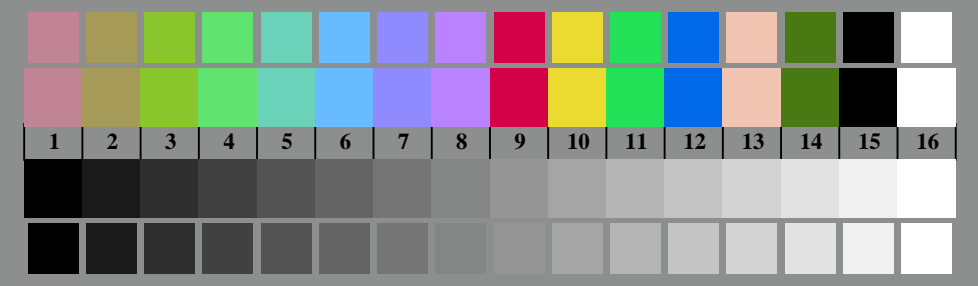


AI291-7, Fig. B7Wdd: anelli di Landolt $W-Y_d$; $W-N$; PS operator: $rgb \rightarrow rgb_{dd}$ setrgbcolor



reticoli radiali $W-C_d$ reticoli radiali $W-M_d$ reticoli radiali $W-Y_d$ reticoli radiali $W-N$ reticoli radiali $W-Z$

AI290-5, Fig. B2Wdd: reticoli radiali $W-C_d$; $W-M_d$; $W-Y_d$; $W-N$; PS operator: $rgb \rightarrow rgb_{dd}$ setrgbcolor



AI290-7, Fig. B3Wdd: 14 prova colori CIE i 2 + 16 grigio passi (sf); $rgb/cmy0 \rightarrow rgb_{dd}$ setrgbcolor

Grafico AI29 conformemente a grafico 2 a ISO/IEC 15775
 Tavola dei colori cromatici CMYK

Input: $rgb/cmy0/000n/w$ set...
 Output: $\rightarrow rgb_{dd}$ setrgbcolor