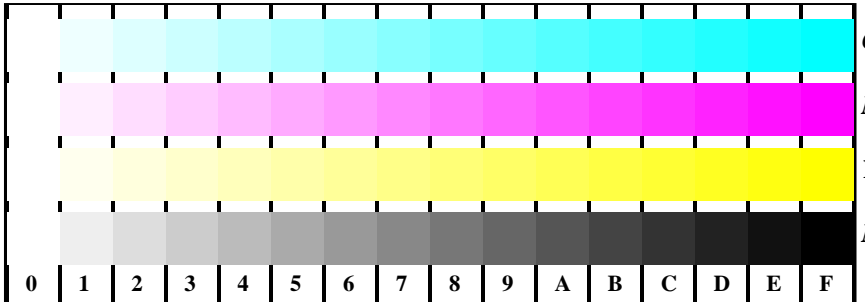
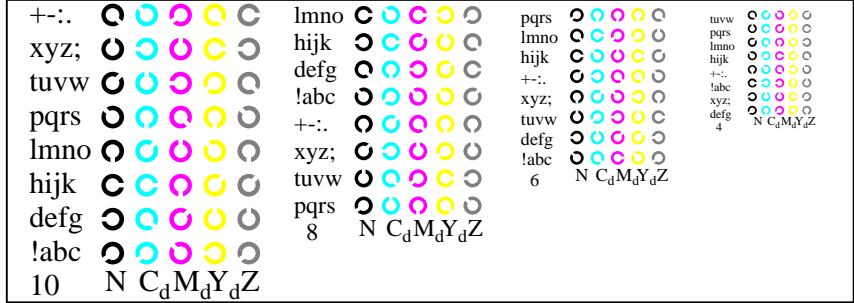


vedi file simili: <http://farbe.li.tu-berlin.de/AI29/AI29.HTM>  
 informazioni tecniche: <http://farbe.li.tu-berlin.de/> o <http://farbe.li.tu-berlin.de/AE.HTM>

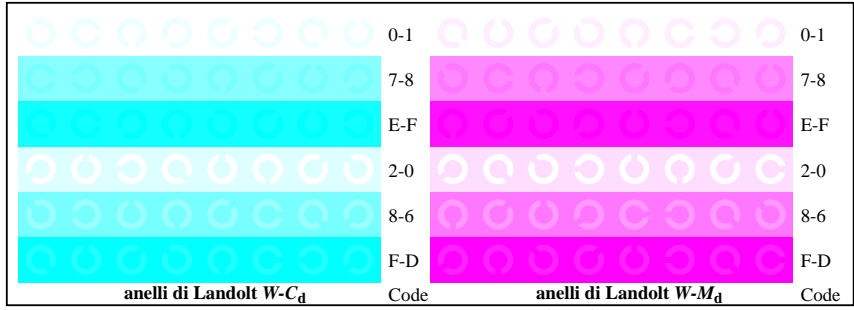
iscrizione TUB: 20190301-AI29/AI29L0FA.TXT /.PS  
 Applicazione per la misura dell'output di display et output di stampa  
 TUB materiale: code=rhata



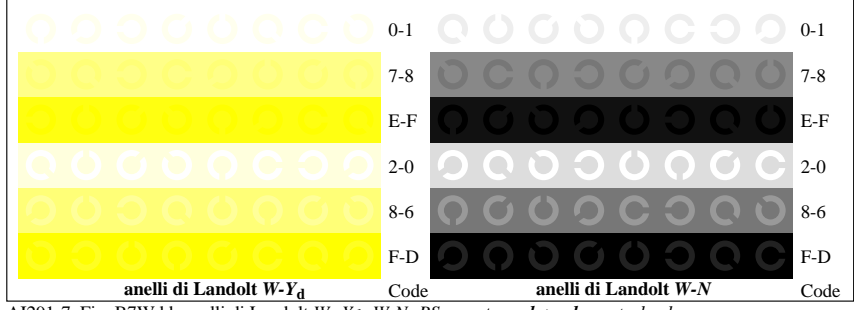
AI291-1, Fig. B4Wdd: 16 equidistante passi  $W-C_d$ ;  $W-M_d$ ;  $W-J_d$ ;  $W-N$ ;  $rgb/cmy0 \rightarrow rgb_{dd}$  setrgbcolor



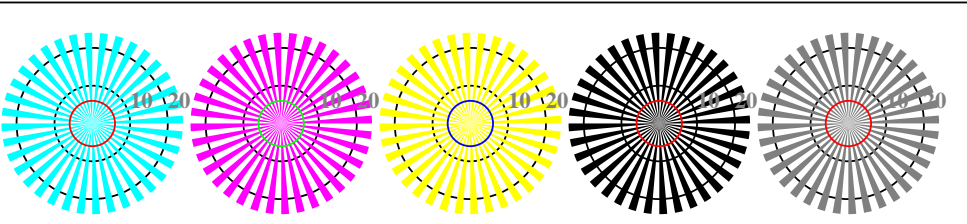
AI291-3, Fig. B5Wdd: codice i Landolt anelli N;  $C_d$ ;  $M_d$ ;  $Y_d$ ; Z; PS operator:  $rgb \rightarrow rgb_{dd}$  setrgbcolor



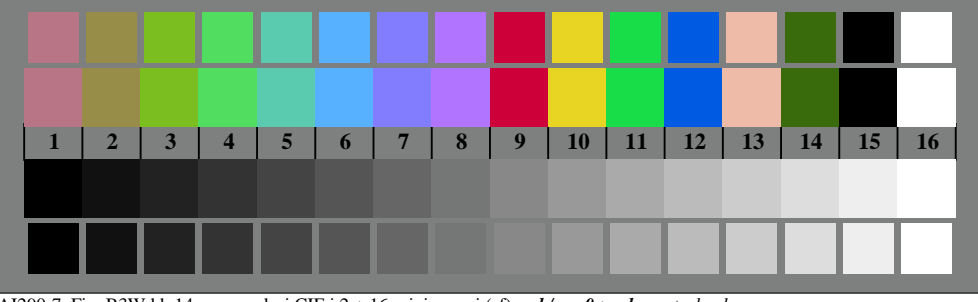
AI291-5, Fig. B6Wdd: anelli di Landolt  $W-C_d$ ;  $W-M_d$ ; PS operator:  $rgb \rightarrow rgb_{dd}$  setrgbcolor



AI291-7, Fig. B7Wdd: anelli di Landolt  $W-Y_d$ ;  $W-N$ ; PS operator:  $rgb \rightarrow rgb_{dd}$  setrgbcolor



AI290-5, Fig. B2Wdd: reticoli radiali  $W-C_d$ ;  $W-M_d$ ;  $W-Y_d$ ;  $W-N$ ; PS operator:  $rgb \rightarrow rgb_{dd}$  setrgbcolor



AI290-7, Fig. B3Wdd: 14 prova colori CIE i 2 + 16 grigio passi (sf);  $rgb/cmy0 \rightarrow rgb_{dd}$  setrgbcolor

Grafico AI29 conformemente a grafico 2 a ISO/IEC 15775  
 Tavola dei colori cromatici CMYK

Input:  $rgb/cmy0/000n/w$  set...  
 Output:  $\rightarrow rgb_{dd}$  setrgbcolor