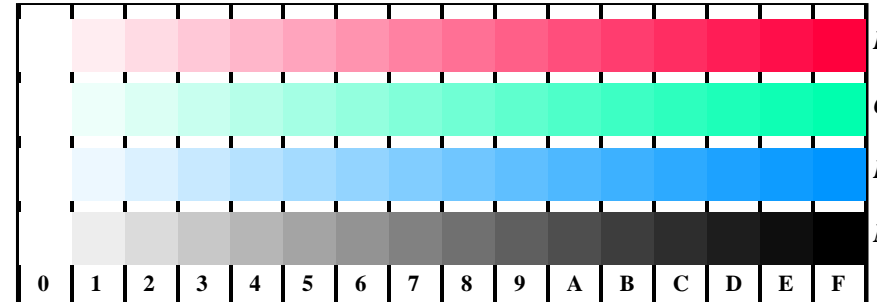
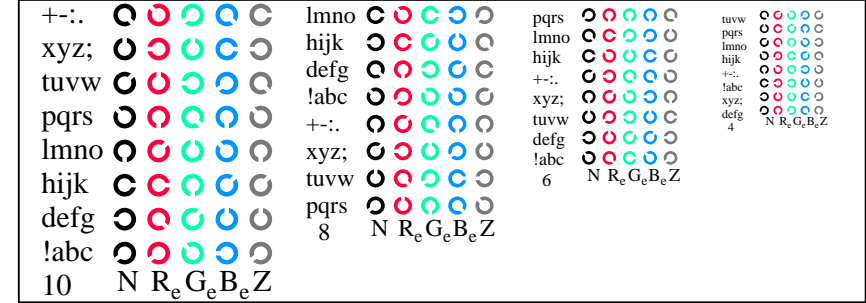


se lignende filer: <http://farbe.li.tu-berlin.de/AN16/AN16.HTM>  
 teknisk informasjon: <http://farbe.li.tu-berlin.de/> eller <http://farbe.li.tu-berlin.de/AE.HTM>

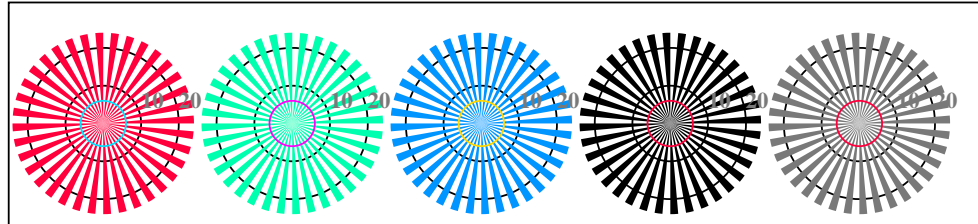
TUB Registrering: 20190301-AN16/AN16L0FA.TXT /.PS  
 anvendelse for måling av display og utskriftsutgang  
 TUB-materiell: code=rh4ta



AN161-1, Figur D4Wde: 16 equidistant steps  $W-R_e$ ;  $W-G_e$ ;  $W-B_e$ ;  $W-N$ ;  $rgb/cmy0 \rightarrow rgb_{de}$  setrgbcolor

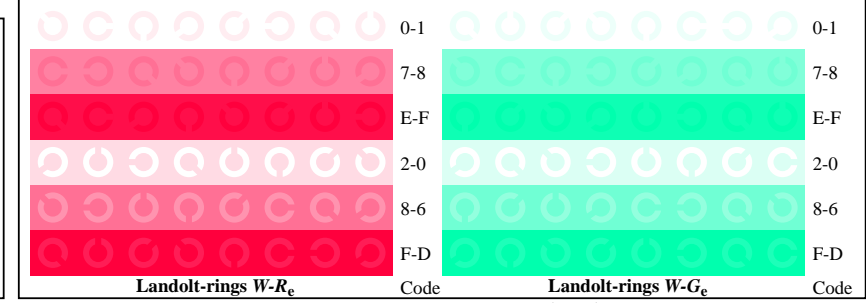


AN161-3, Figur D5Wde: Script Landoltringer  $N$ ;  $R_e$ ;  $G_e$ ;  $B_e$ ;  $Z$ ; PS operator:  $rgb \rightarrow rgb_{de}$  setrgbcolor

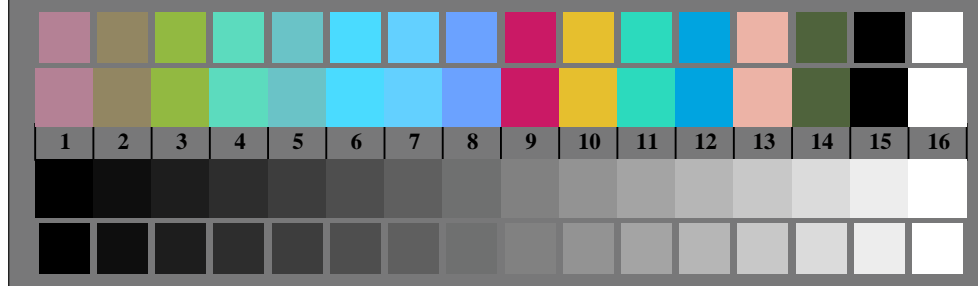


Siemens-stjerner  $W-R_e$  Siemens-stjerner  $W-G_e$  Siemens-stjerner  $W-B_e$  Siemens-stjerner  $W-N$  Siemens-stjerner  $W-Z$

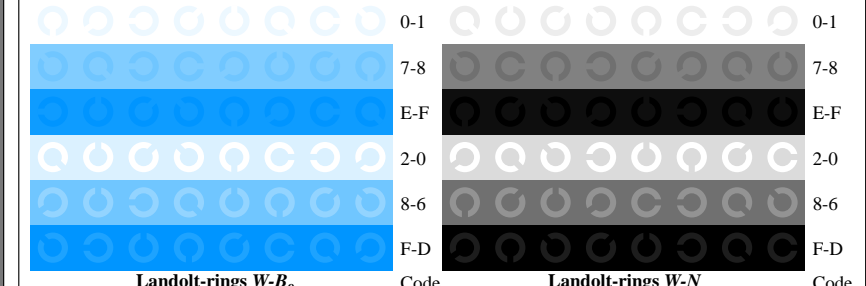
AN160-5, Figur D2Wde: Siemens-stjerner  $W-R_e$ ;  $W-G_e$ ;  $W-B_e$ ;  $W-N$ ; PS operator:  $rgb \rightarrow rgb_{de}$  setrgbcolor



AN161-5, Figur D6Wde: Landoltringer  $W-R_e$ ;  $W-G_e$ ; PS operator:  $rgb \rightarrow rgb_{de}$  setrgbcolor



AN160-7, Figur D3Wde: 14 CIE-test colours and 2 + 16 grey steps (sf);  $rgb/cmy0 \rightarrow rgb_{de}$  setrgbcolor



AN161-7, Figur D7Wde: Landoltringer  $W-B_e$ ;  $W-N$ ; PS operator:  $rgb \rightarrow rgb_{de}$  setrgbcolor



Prøveplansje AN16 infølge Prøveplansje 4 ISO/IEC 15775  
 kromatisk prøveplansje RGB

input:  $rgb/cmy0/000n/w$  set...  
 output:  $\rightarrow rgb_{de}$  setrgbcolor

