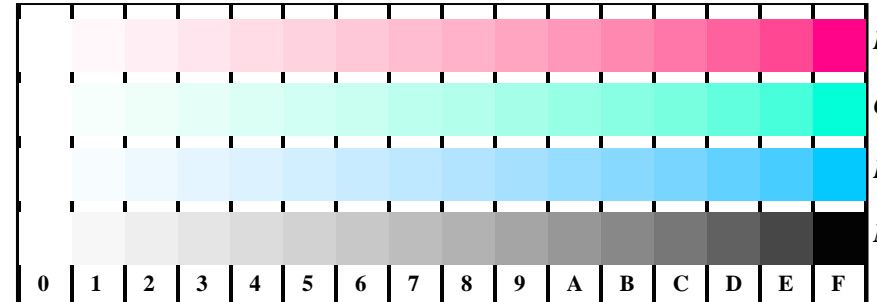
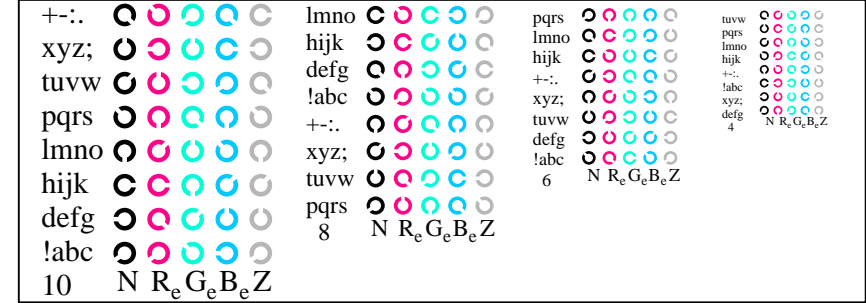


se lignende filer: <http://farbe.li.tu-berlin.de/AN16/AN16.HTM>
 teknisk informasjon: <http://farbe.li.tu-berlin.de/> eller <http://farbe.li.tu-berlin.de/AE.HTM>

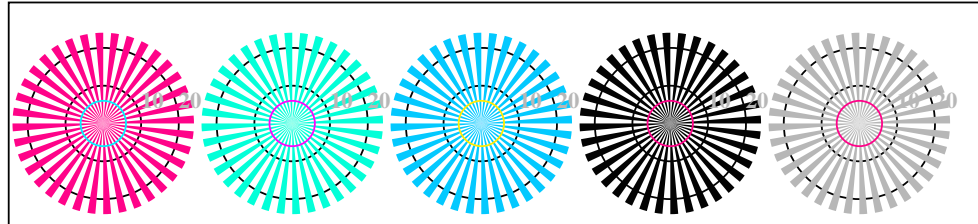
TUB Registrering: 20190301-AN16/AN16L0FA.TXT /.PS
 anvendelse for måling av display og utskriftsutgang
 TUB-materiell: code=rh4tta



AN161-1, Figur D4Wde: 16 equidistant steps $W-R_e$; $W-G_e$; $W-B_e$; $W-N$; $rgb/cmy_0 \rightarrow rgb_{de}$ setrgbcolor

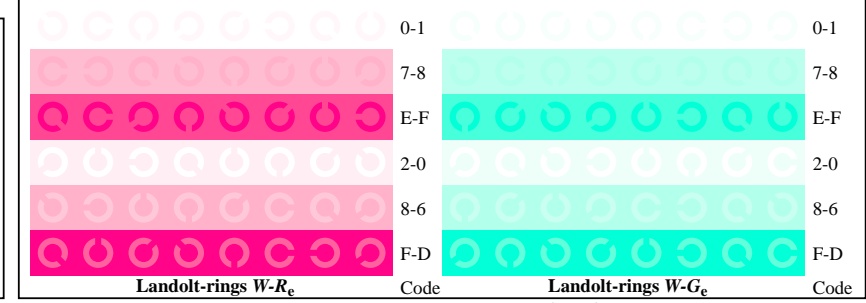


AN161-3, Figur D5Wde: Script Landoltringer N ; R_e ; G_e ; B_e ; Z ; PS operator: $rgb \rightarrow rgb_{de}$ setrgbcolor

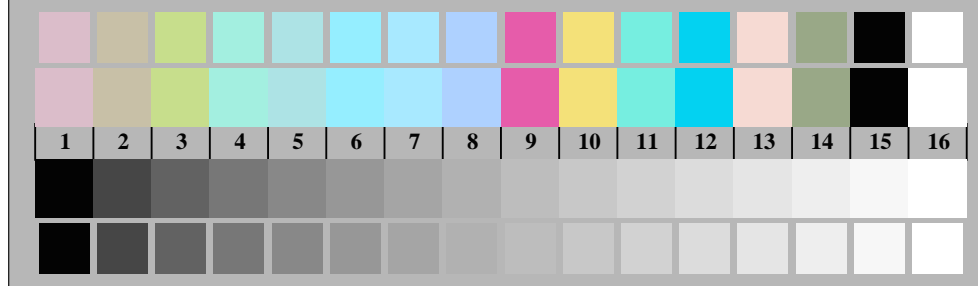


Siemens-stjerner $W-R_e$ Siemens-stjerner $W-G_e$ Siemens-stjerner $W-B_e$ Siemens-stjerner $W-N$ Siemens-stjerner $W-Z$

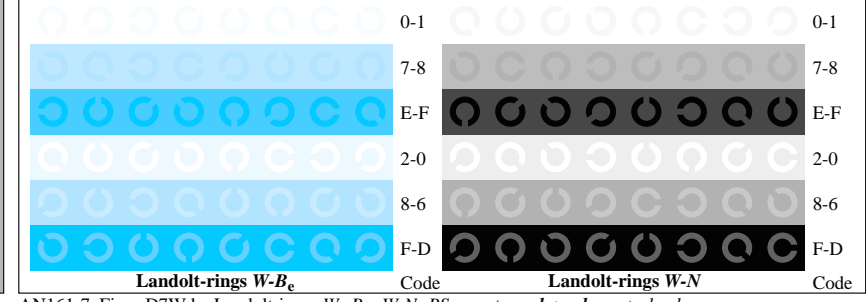
AN160-5, Figur D2Wde: Siemens-stjerner $W-R_e$; $W-G_e$; $W-B_e$; $W-N$; PS operator: $rgb \rightarrow rgb_{de}$ setrgbcolor



AN161-5, Figur D6Wde: Landoltringer $W-R_e$; $W-G_e$; PS operator: $rgb \rightarrow rgb_{de}$ setrgbcolor



AN160-7, Figur D3Wde: 14 CIE-test colours and 2 + 16 grey steps (sf); $rgb/cmy_0 \rightarrow rgb_{de}$ setrgbcolor



AN161-7, Figur D7Wde: Landoltringer $W-B_e$; $W-N$; PS operator: $rgb \rightarrow rgb_{de}$ setrgbcolor



Prøveplansje AN16 infølge Prøveplansje 4 ISO/IEC 15775
 kromatisk prøveplansje RGB

input: $rgb/cmy_0/000n/w$ set...
 output: $\rightarrow rgb_{de}$ setrgbcolor

