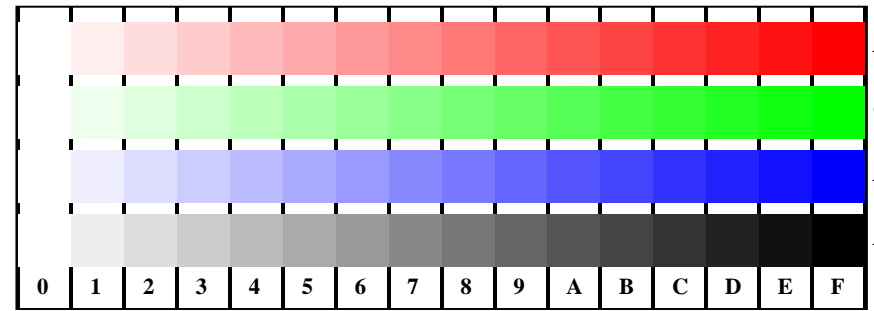
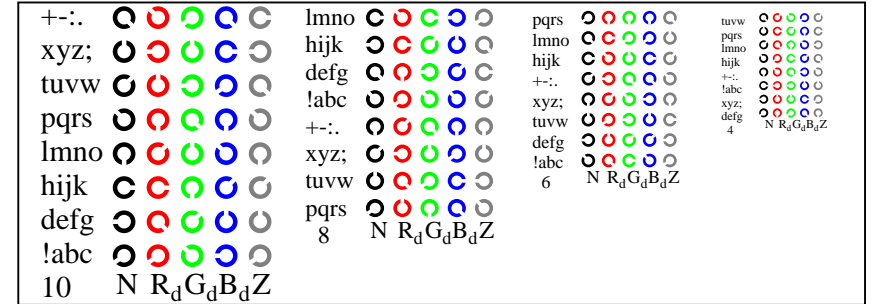


se lignende filer: <http://farbe.li.tu-berlin.de/AN16/AN16L1NA.TXT>
 teknisk informasjon: <http://farbe.li.tu-berlin.de/> eller <http://farbe.li.tu-berlin.de/AE.HTM>

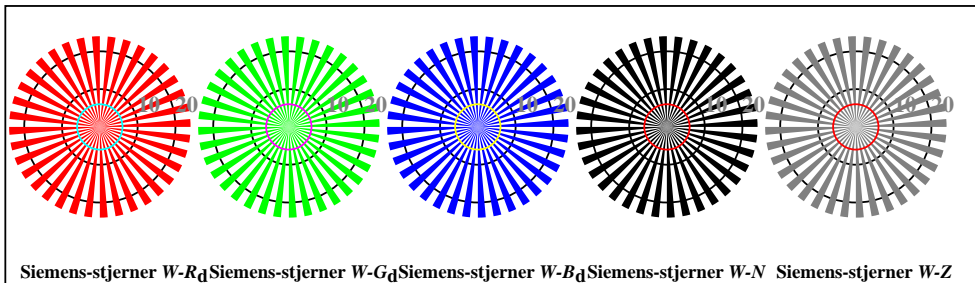
TUB Registrering: 20190301-AN16/AN16L1NA.TXT /.PS
 anvendelse for måling av display og utskriftsutgang
 TUB-materiell: code=rha4ta



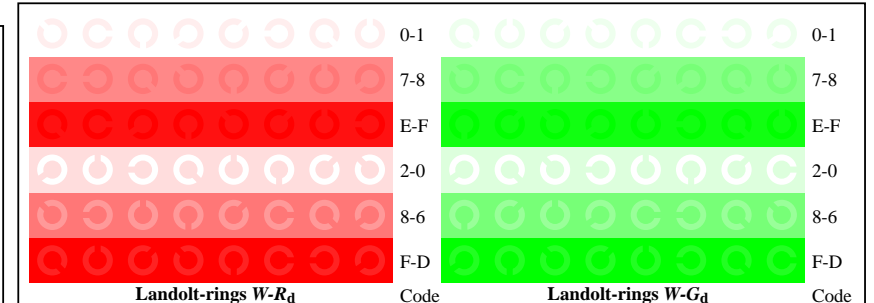
AN161-1, Figur D4Wdd: 16 equidistant steps $W-R_d$; $W-G_d$; $W-B_d$; $W-N$; $rgb/cmy0 \rightarrow rgb_{dd}$ setrgbcolor



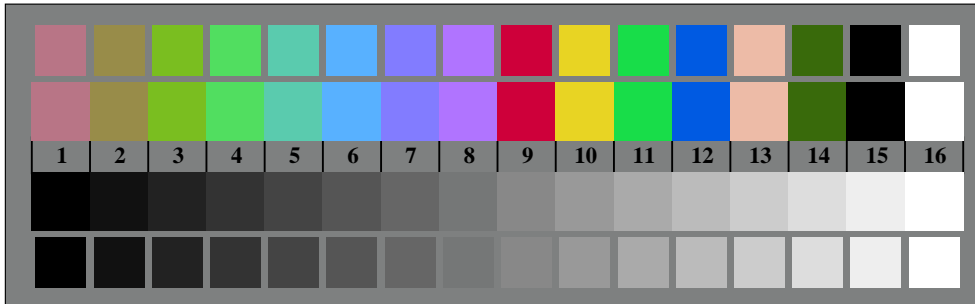
AN161-3, Figur D5Wdd: Script Landoltringer N ; R_d ; G_d ; B_d ; Z ; PS operator: $rgb \rightarrow rgb_{dd}$ setrgbcolor



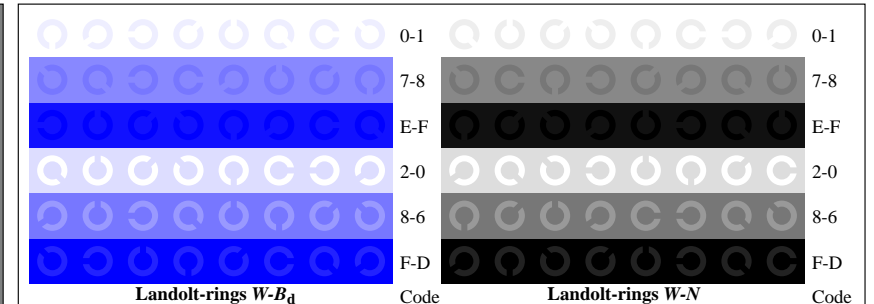
AN160-5, Figur D2Wdd: Siemens-stjerner $W-R_d$; $W-G_d$; $W-B_d$; $W-N$; PS operator: $rgb \rightarrow rgb_{dd}$ setrgbcolor



AN161-5, Figur D6Wdd: Landoltringer $W-R_d$; $W-G_d$; PS operator: $rgb \rightarrow rgb_{dd}$ setrgbcolor



AN160-7, Figur D3Wdd: 14 CIE-test colours and 2 + 16 grey steps (sf); $rgb/cmy0 \rightarrow rgb_{dd}$ setrgbcolor



AN161-7, Figur D7Wdd: Landoltringer $W-B_d$; $W-N$; PS operator: $rgb \rightarrow rgb_{dd}$ setrgbcolor



Prøveplansje AN16 infølge Prøveplansje 4 ISO/IEC 15775
 kromatisk prøveplansje RGB

input: $rgb/cmy0/000n/w$ set...
 output: $\rightarrow rgb_{dd}$ setrgbcolor

