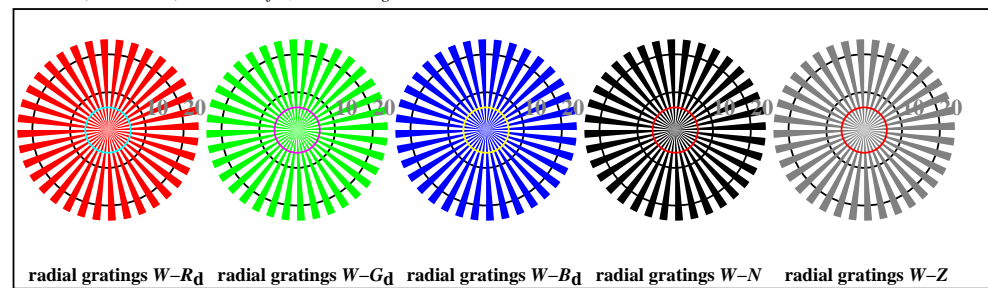




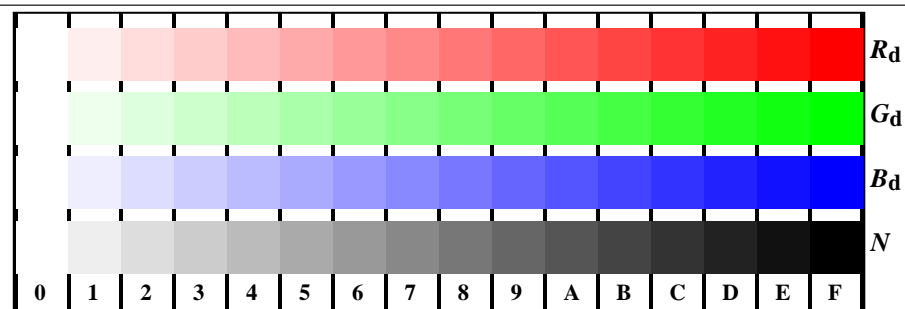
AN180-3, DIW*dd: ; PS settransfer, 3 colorimage



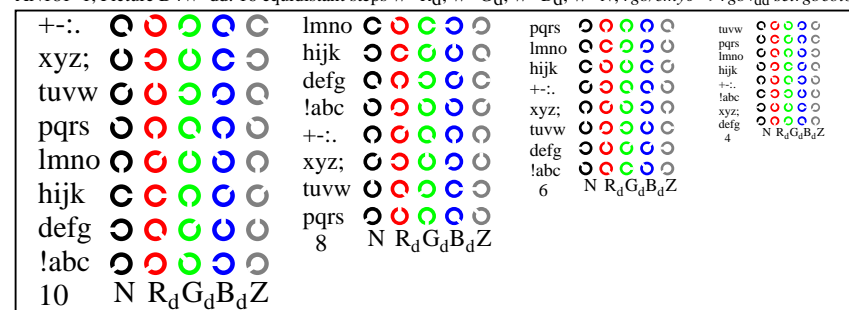
AN180-5, Picture D2W*dd: radial gratings W-R_d: W-G_d: W-B_d: W-N; PS operator rgb->rgb*_{dd} setrgbcolor



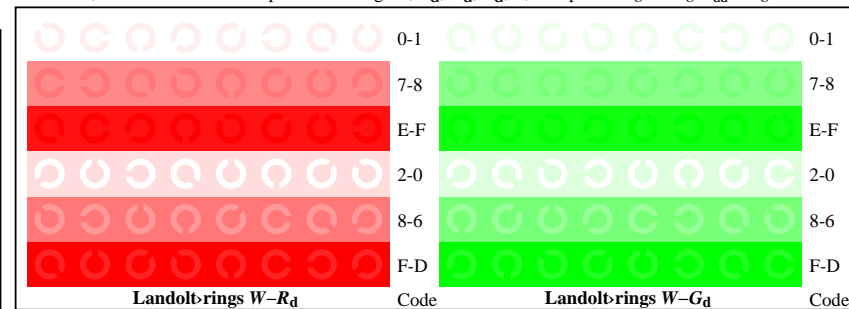
AN180-7, Picture D3W*dd: 14 CIE-test colours and 2 + 16 grey steps (sf); rgb/cmy0->rgb*_{dd} setrgbcolor



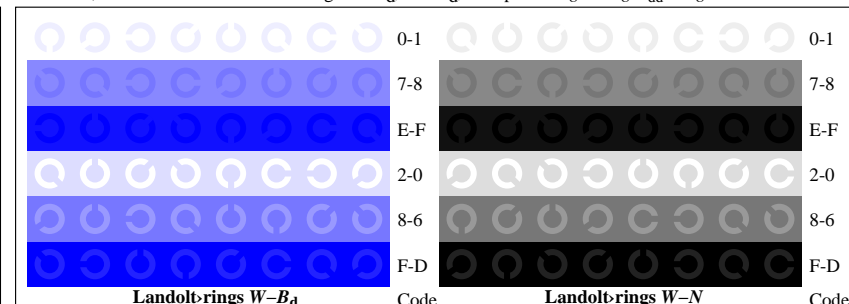
AN181-1, Picture D4W*dd: 16 equidistant steps W-R_d: W-G_d: W-B_d: W-N; rgb/cmy0->rgb*_{dd} setrgbcolor



AN181-3, Picture D5W*dd: Script Landolt-rings N; R_d: G_d: B_d: Z; PS operator rgb->rgb*_{dd} setrgbcolor



AN181-5, Picture D6W*dd: Landolt-rings W-R_d: W-G_d; PS operator rgb->rgb*_{dd} setrgbcolor



AN181-7, Picture D7W*dd: Landolt-rings W-B_d: W-N; PS operator rgb->rgb*_{dd} setrgbcolor