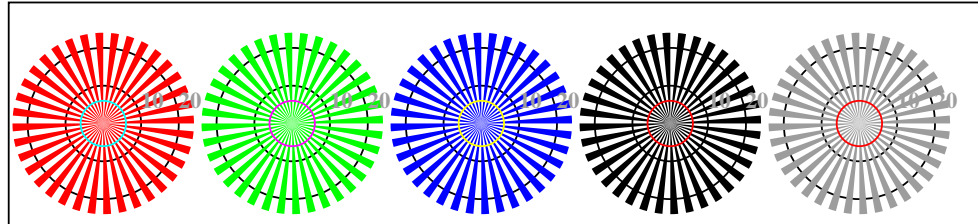


se lignende filer: <http://standards.iso.org/iso/9241/306/ed-2/AN18/AN18.HTM>  
 teknisk informasjon: <http://farbe.li.tu-berlin.de/> eller <http://farbe.li.tu-berlin.de/AE.HTM>

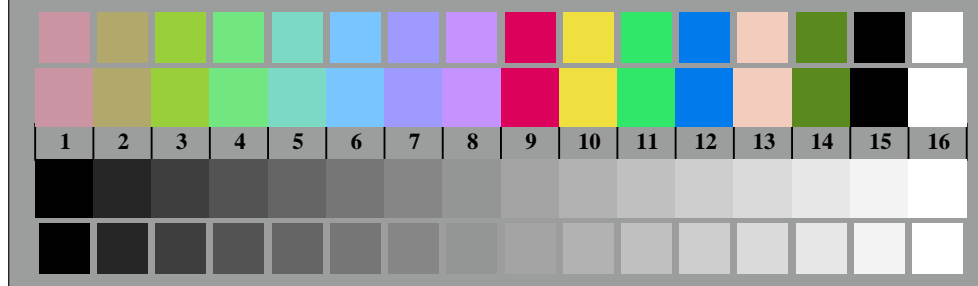


AN180-3, Figur D1Wdd: Flower motif, 14 CIE-test colours og 2 + 16 gråtrinn (sf); PS operator: *settransfer, 3 colorimage*

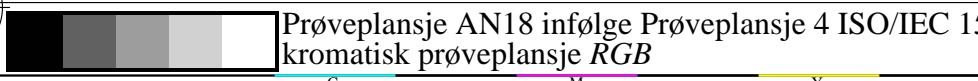


Siemens-stjerner W-R<sub>d</sub> Siemens-stjerner W-G<sub>d</sub> Siemens-stjerner W-B<sub>d</sub> Siemens-stjerner W-N Siemens-stjerner W-Z

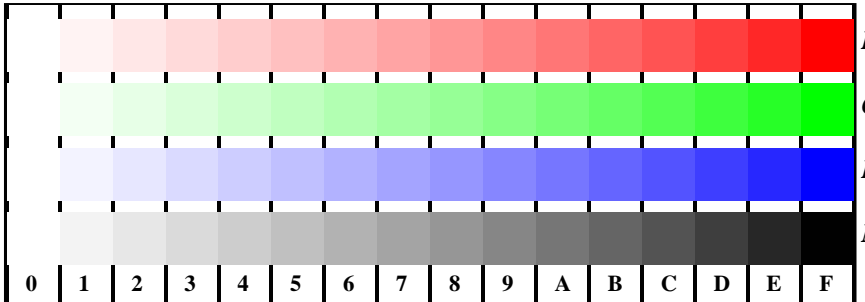
AN180-5, Figur D2Wdd: Siemens-stjerner W-R<sub>d</sub>; W-G<sub>d</sub>; W-B<sub>d</sub>; W-N; PS operator: *rgb->rgb<sub>dd</sub> setrgbcolor*



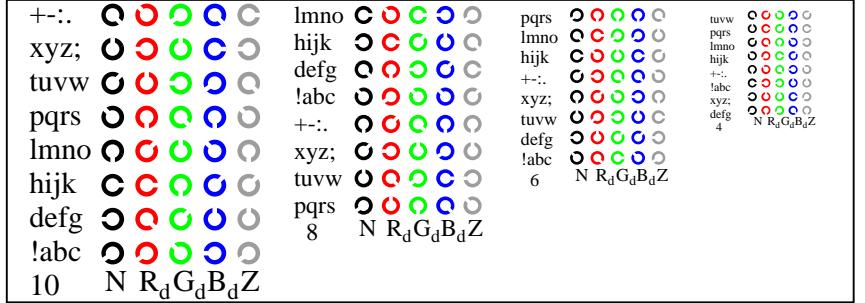
AN180-7, Figur D3Wdd: 14 CIE-test colours and 2 + 16 grey steps (sf); *rgb/cmy0->rgb<sub>dd</sub> setrgbcolor*



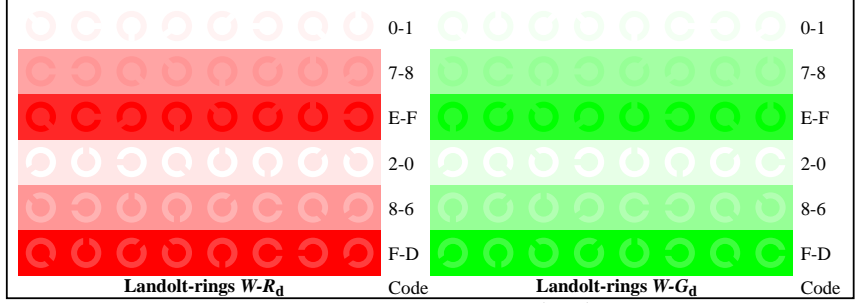
Prøveplansje AN18 infølge Prøveplansje 4 ISO/IEC 15775  
 kromatisk prøveplansje RGB



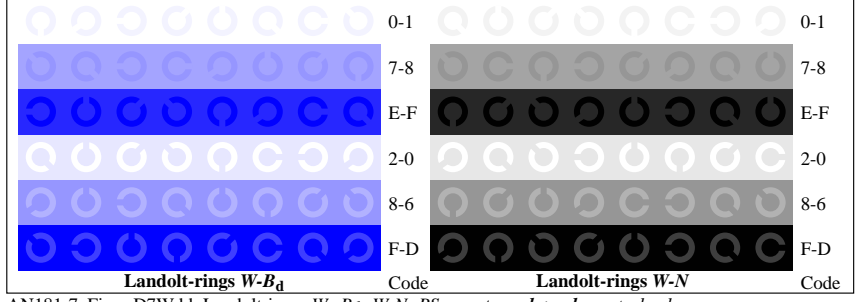
AN181-1, Figur D4Wdd: 16 equidistant steps W-R<sub>d</sub>; W-G<sub>d</sub>; W-B<sub>d</sub>; W-N; *rgb/cmy0->rgb<sub>dd</sub> setrgbcolor*



AN181-3, Figur D5Wdd: Script Landoltringer N; R<sub>d</sub>; G<sub>d</sub>; B<sub>d</sub>; Z; PS operator: *rgb->rgb<sub>dd</sub> setrgbcolor*



AN181-5, Figur D6Wdd: Landoltringer W-R<sub>d</sub>; W-G<sub>d</sub>; PS operator: *rgb->rgb<sub>dd</sub> setrgbcolor*



AN181-7, Figur D7Wdd: Landoltringer W-B<sub>d</sub>; W-N; PS operator: *rgb->rgb<sub>dd</sub> setrgbcolor*

input: *rgb/cmy0/000n/w set...*  
 output: *->rgb<sub>dd</sub> setrgbcolor*

TUB Registrering: 20190301-AN18/AN18L0FA.TXT /.PS  
 søknad om måling og visning av utgang på display og utskrift

TUB-materiell: code=rh4ta