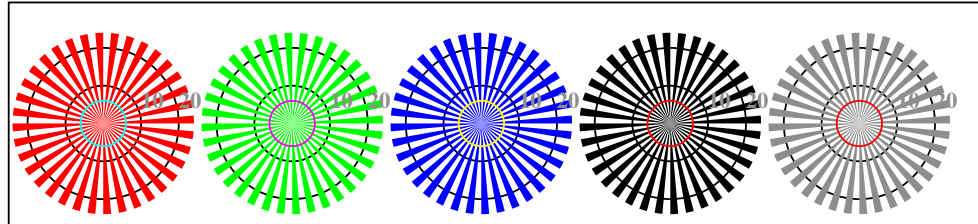


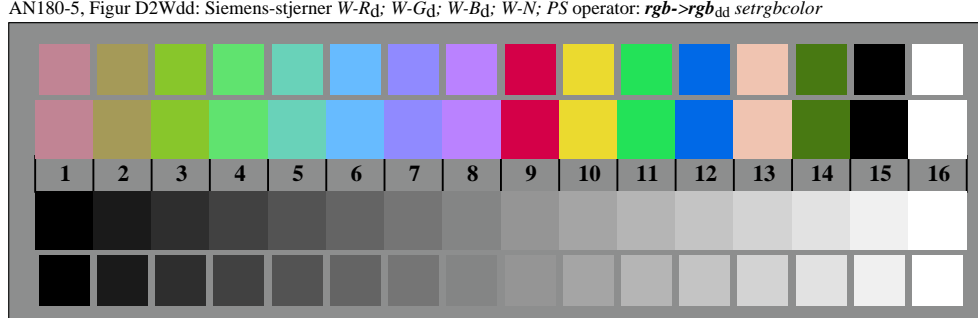
se lignende filer: <http://standards.iso.org/iso/9241/306/ed-2/AN18/AN18.HTM>
 teknisk informasjon: <http://farbe.li.tu-berlin.de/> eller <http://farbe.li.tu-berlin.de/AE.HTM>



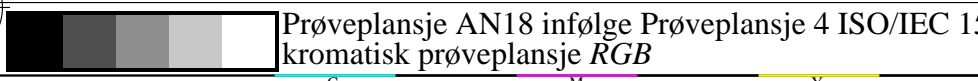
AN180-3, Figur D1Wdd: Flower motif, 14 CIE-test colours og 2 + 16 gråtrinn (sf); PS operator: *settransfer*, 3 *colorimage*



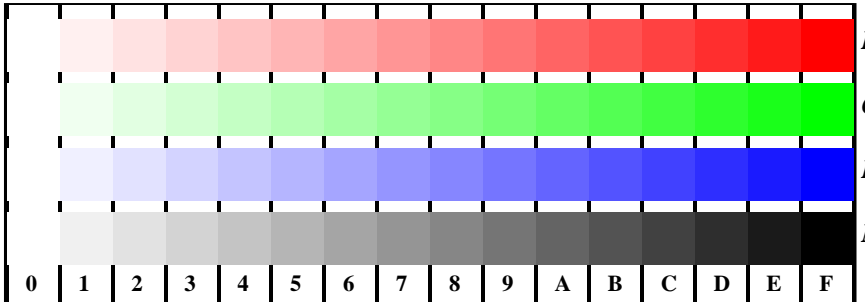
Siemens-stjerner $W-R_d$ Siemens-stjerner $W-G_d$ Siemens-stjerner $W-B_d$ Siemens-stjerner $W-N$ Siemens-stjerner $W-Z$
 AN180-5, Figur D2Wdd: Siemens-stjerner $W-R_d$; $W-G_d$; $W-B_d$; $W-N$; PS operator: *rgb->rgb_{dd} setrgbcolor*



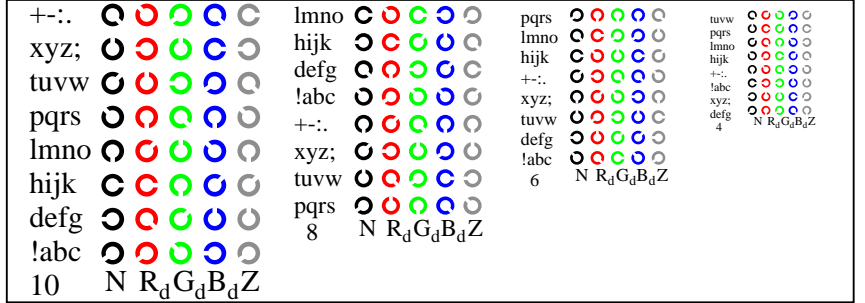
AN180-7, Figur D3Wdd: 14 CIE-test colours and 2 + 16 grey steps (sf); *rgb/cmy0->rgb_{dd} setrgbcolor*



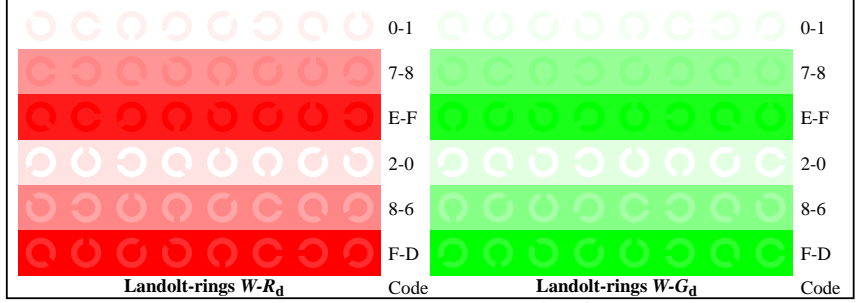
Prøveplansje AN18 infølge Prøveplansje 4 ISO/IEC 15775
 kromatisk prøveplansje RGB



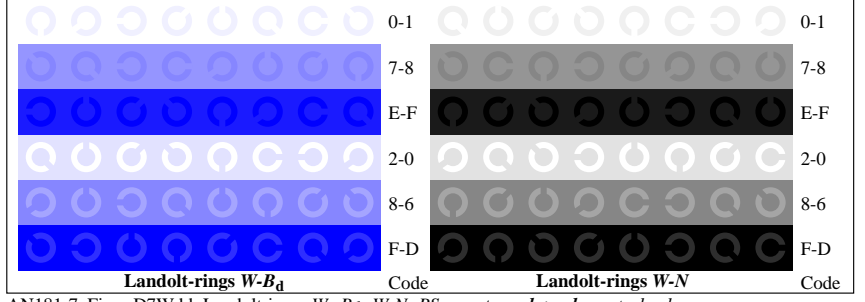
AN181-1, Figur D4Wdd: 16 equidistant steps $W-R_d$; $W-G_d$; $W-B_d$; $W-N$; *rgb/cmy0->rgb_{dd} setrgbcolor*



AN181-3, Figur D5Wdd: Script Landoltringer N ; R_d ; G_d ; B_d ; Z ; PS operator: *rgb->rgb_{dd} setrgbcolor*



AN181-5, Figur D6Wdd: Landoltringer $W-R_d$; $W-G_d$; PS operator: *rgb->rgb_{dd} setrgbcolor*



AN181-7, Figur D7Wdd: Landoltringer $W-B_d$; $W-N$; PS operator: *rgb->rgb_{dd} setrgbcolor*

input: *rgb/cmy0/000n/w set...*
 output: *->rgb_{dd} setrgbcolor*

TUB Registrering: 20190301-AN18/AN18L0FA.TXT /.PS
 søknad om måling og visning av utgang på display og utskrift

TUB-materiell: code=rh4ta