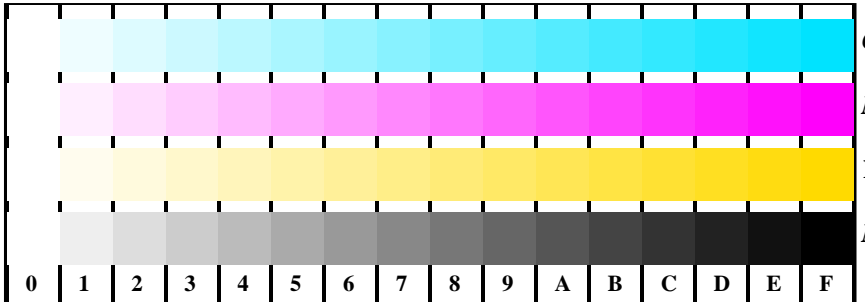
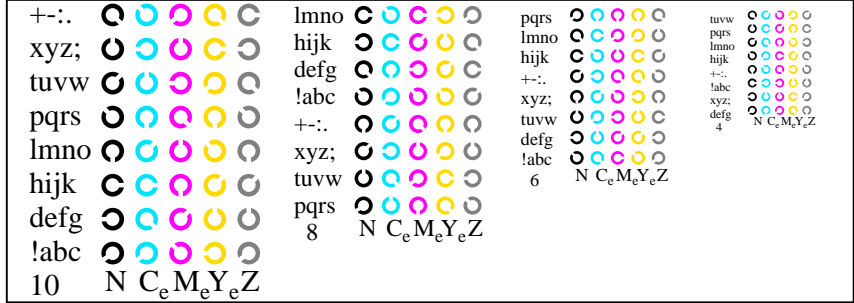


se lignende filer: <http://farbe.li.tu-berlin.de/AN26/AN26.HTM>
 teknisk informasjon: <http://farbe.li.tu-berlin.de/> eller <http://farbe.li.tu-berlin.de/AE.HTM>

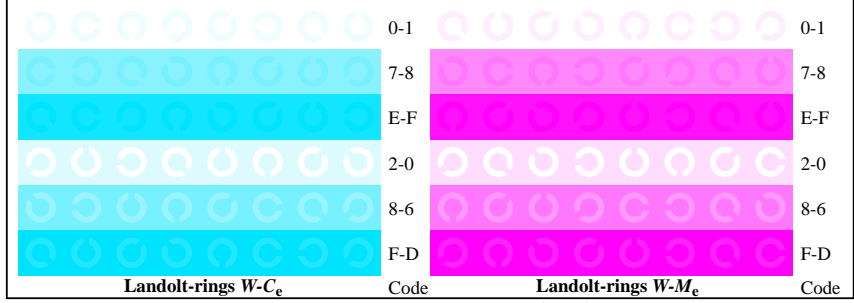
TUB Registrering: 20190301-AN26/AN26L0FA.TXT /.PS
 anvendelse for måling av display og utskriftsutgang
 TUB-materiell: code=rh4ta



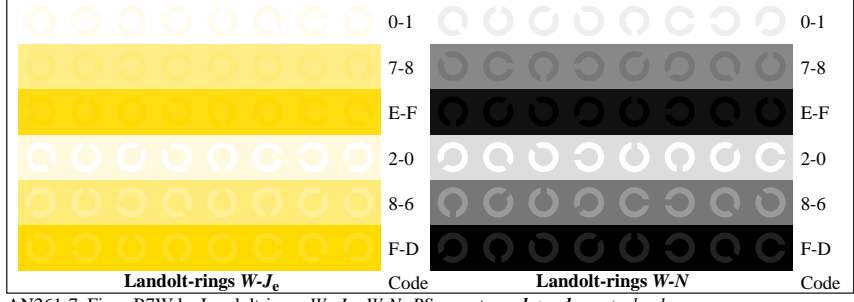
AN261-1, Figur B4Wde: 16 equidistant steps $W-C_e$; $W-M_e$; $W-J_e$; $W-N$; $rgb/cmy0 \rightarrow rgb_{de}$ setrgbcolor



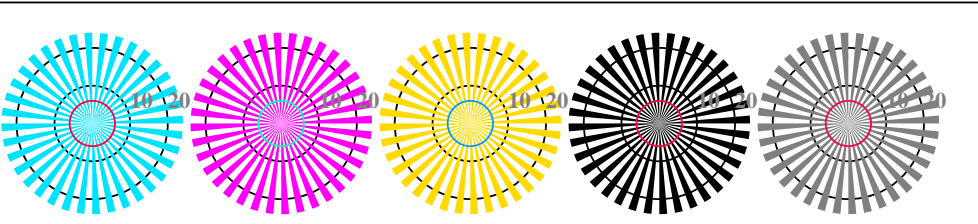
AN261-3, Figur B5Wde: Script Landoltringer N; C_e; M_e; Y_e; Z; PS operator: $rgb \rightarrow rgb_{de}$ setrgbcolor



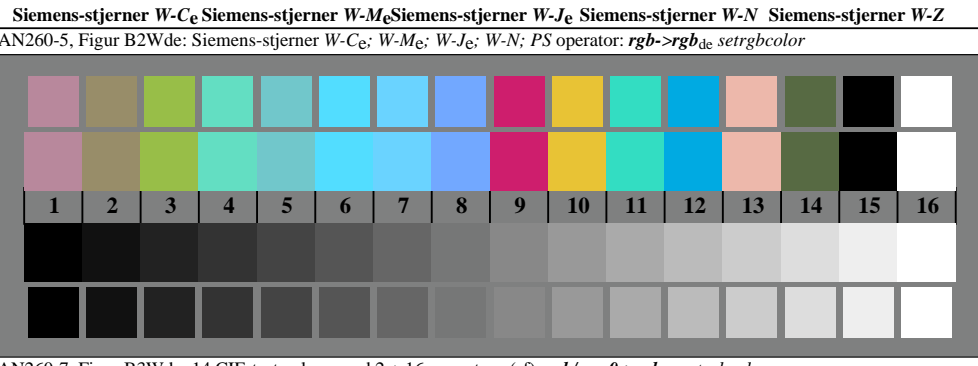
AN261-5, Figur B6Wde: Landoltringer $W-C_e$; $W-M_e$; PS operator: $rgb \rightarrow rgb_{de}$ setrgbcolor



AN261-7, Figur B7Wde: Landoltringer $W-J_e$; $W-N$; PS operator: $rgb \rightarrow rgb_{de}$ setrgbcolor



AN260-5, Figur B2Wde: Siemens-stjerner $W-C_e$; $W-M_e$; $W-J_e$; $W-N$; PS operator: $rgb \rightarrow rgb_{de}$ setrgbcolor



AN260-7, Figur B3Wde: 14 CIE-test colours and 2 + 16 grey steps (sf); $rgb/cmy0 \rightarrow rgb_{de}$ setrgbcolor



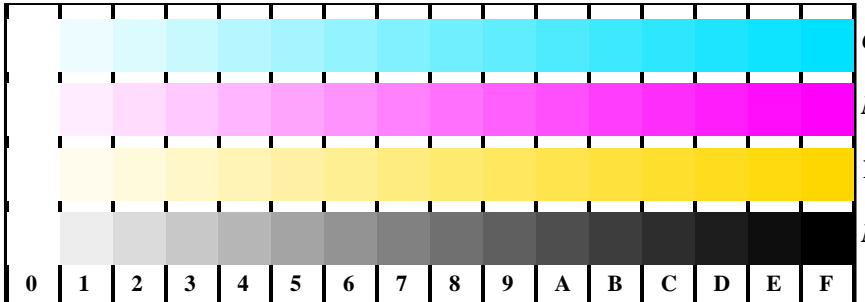
Prøveplasje AN26 infølge Prøveplasje 2 ISO/IEC 15775
 kromatisk prøveplasje CMYK

input: $rgb/cmy0/000n/w$ set...
 output: $\rightarrow rgb_{de}$ setrgbcolor

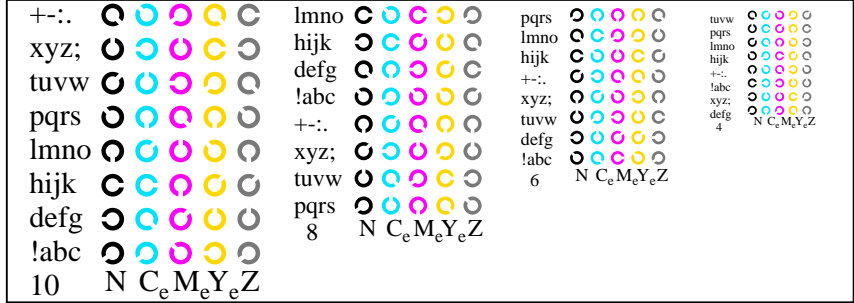


se lignende filer: <http://farbe.li.tu-berlin.de/AN26/AN26.HTM>
 teknisk informasjon: <http://farbe.li.tu-berlin.de/> eller <http://farbe.li.tu-berlin.de/AE.HTM>

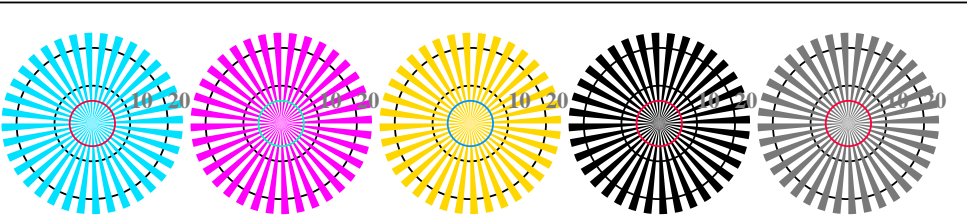
TUB Registrering: 20190301-AN26/AN26L0FA.TXT /.PS
 anvendelse for måling av display og utskriftsutgang
 TUB-materiell: code=rh4ta



AN261-1, Figur B4Wde: 16 equidistant steps $W-C_e$; $W-M_e$; $W-J_e$; $W-N$; $rgb/cmy_0 \rightarrow rgb_{de}$ setrgbcolor

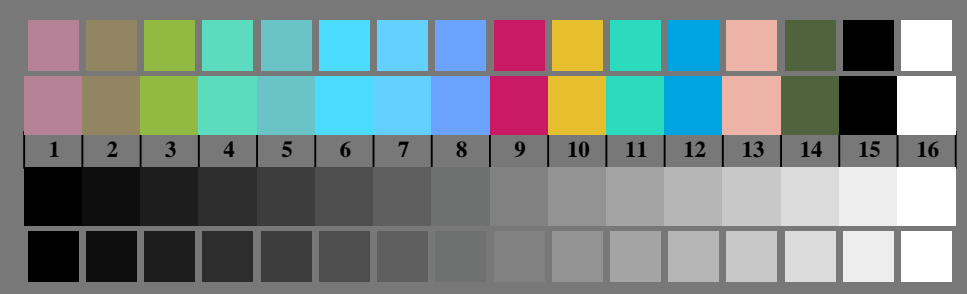


AN261-3, Figur B5Wde: Script Landoltringer N ; C_e ; M_e ; Y_e ; Z ; PS operator: $rgb \rightarrow rgb_{de}$ setrgbcolor

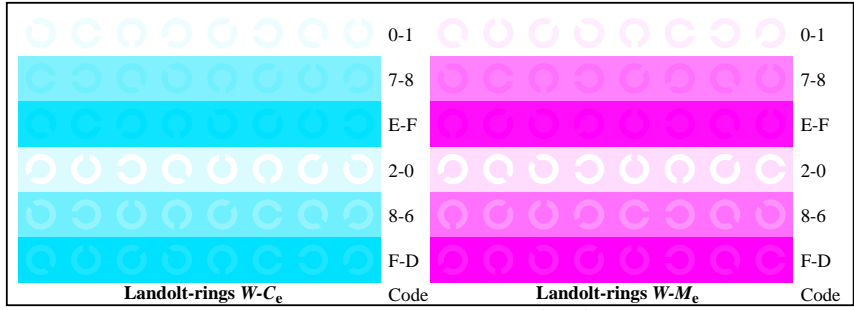


Siemens-stjerner $W-C_e$ Siemens-stjerner $W-M_e$ Siemens-stjerner $W-J_e$ Siemens-stjerner $W-N$ Siemens-stjerner $W-Z$

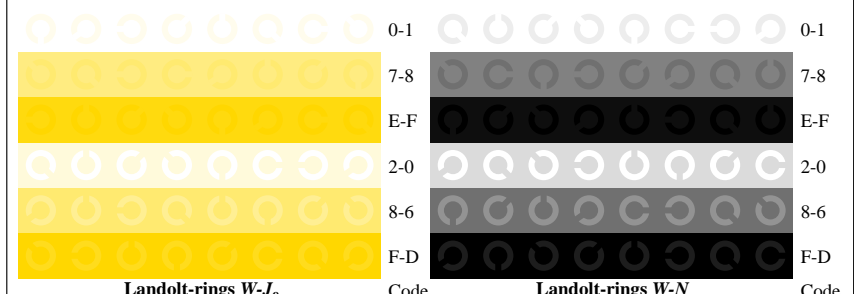
AN260-5, Figur B2Wde: Siemens-stjerner $W-C_e$; $W-M_e$; $W-J_e$; $W-N$; PS operator: $rgb \rightarrow rgb_{de}$ setrgbcolor



AN260-7, Figur B3Wde: 14 CIE-test colours and 2 + 16 grey steps (sf); $rgb/cmy_0 \rightarrow rgb_{de}$ setrgbcolor



AN261-5, Figur B6Wde: Landoltringer $W-C_e$; $W-M_e$; PS operator: $rgb \rightarrow rgb_{de}$ setrgbcolor



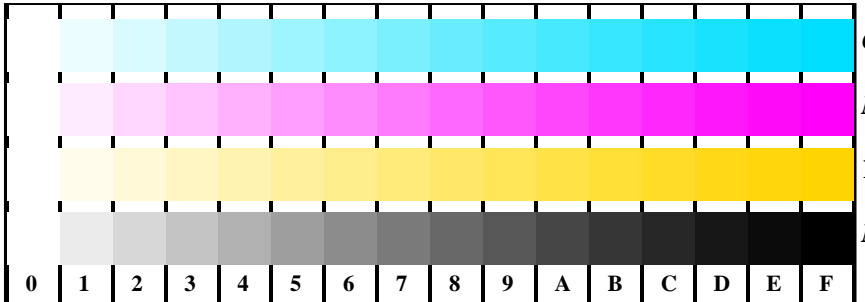
AN261-7, Figur B7Wde: Landoltringer $W-J_e$; $W-N$; PS operator: $rgb \rightarrow rgb_{de}$ setrgbcolor

Prøveplasje AN26 infølge Prøveplasje 2 ISO/IEC 15775
 kromatisk prøveplasje CMYK

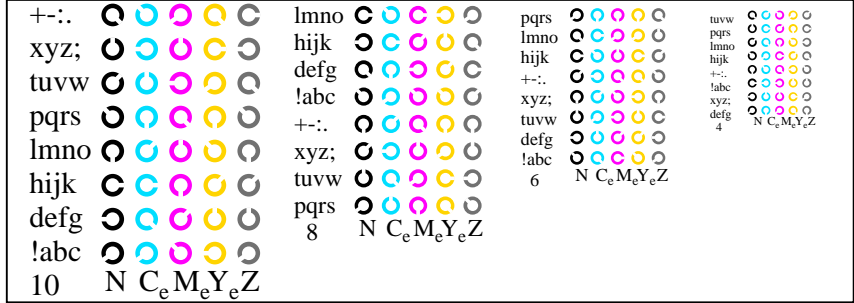
input: $rgb/cmy_0/000n/w$ set...
 output: $\rightarrow rgb_{de}$ setrgbcolor

se lignende filer: <http://farbe.li.tu-berlin.de/AN26/AN26.HTM>
 teknisk informasjon: <http://farbe.li.tu-berlin.de/> eller <http://farbe.li.tu-berlin.de/AE.HTM>

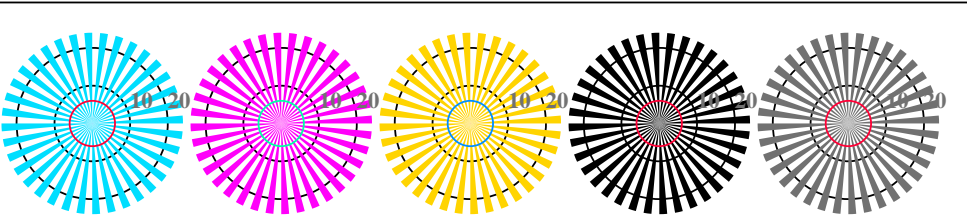
TUB Registrering: 20190301-AN26/AN26L0FA.TXT /.PS
 anvendelse for måling av display og utskriftsutgang
 TUB-materiell: code=rh4ta



AN261-1, Figur B4Wde: 16 equidistant steps $W-C_e$; $W-M_e$; $W-J_e$; $W-N$; $rgb/cmy0 \rightarrow rgb_{de}$ setrgbcolor

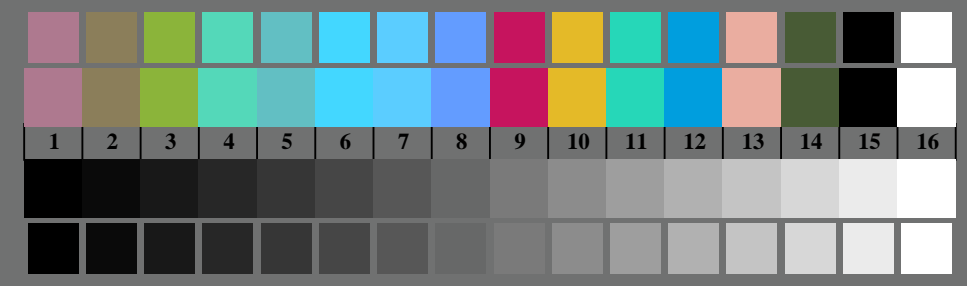


AN261-3, Figur B5Wde: Script Landoltringer N ; C_e ; M_e ; Y_e ; Z ; PS operator: $rgb \rightarrow rgb_{de}$ setrgbcolor

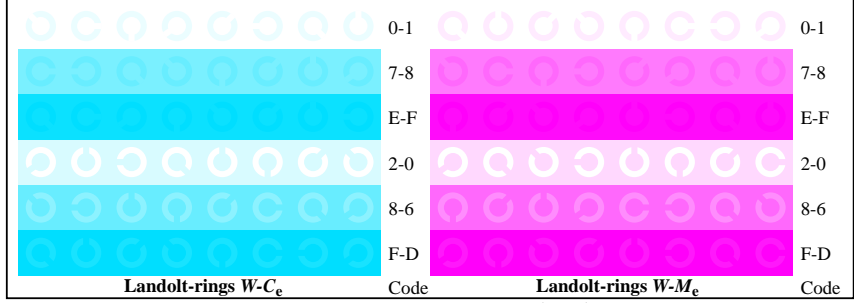


Siemens-stjerner $W-C_e$ Siemens-stjerner $W-M_e$ Siemens-stjerner $W-J_e$ Siemens-stjerner $W-N$ Siemens-stjerner $W-Z$

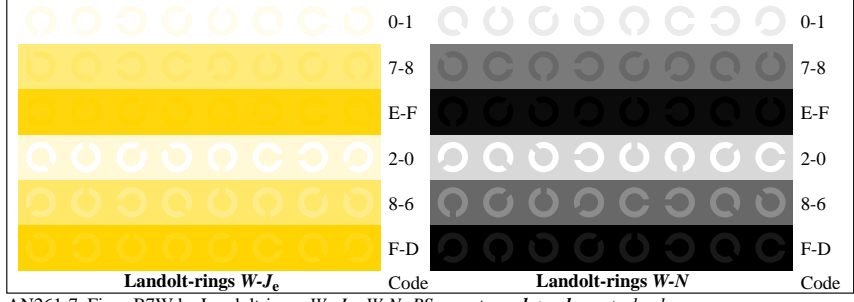
AN260-5, Figur B2Wde: Siemens-stjerner $W-C_e$; $W-M_e$; $W-J_e$; $W-N$; PS operator: $rgb \rightarrow rgb_{de}$ setrgbcolor



AN260-7, Figur B3Wde: 14 CIE-test colours and 2 + 16 grey steps (sf); $rgb/cmy0 \rightarrow rgb_{de}$ setrgbcolor



AN261-5, Figur B6Wde: Landoltringer $W-C_e$; $W-M_e$; PS operator: $rgb \rightarrow rgb_{de}$ setrgbcolor



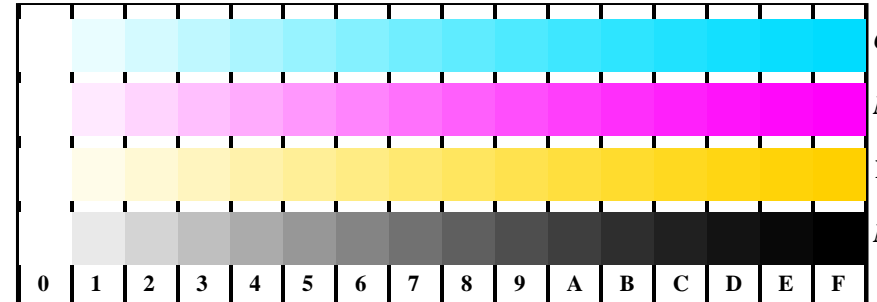
AN261-7, Figur B7Wde: Landoltringer $W-J_e$; $W-N$; PS operator: $rgb \rightarrow rgb_{de}$ setrgbcolor

Prøveplansje AN26 infølge Prøveplansje 2 ISO/IEC 15775
 kromatisk prøveplansje CMYK

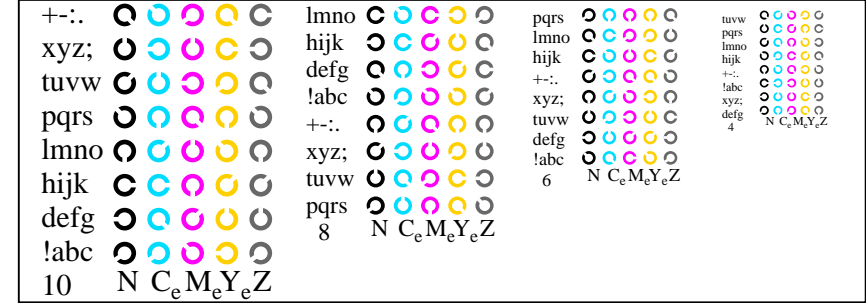
input: $rgb/cmy0/000n/w$ set...
 output: $\rightarrow rgb_{de}$ setrgbcolor

se lignende filer: <http://farbe.li.tu-berlin.de/AN26/AN26.HTM>
 teknisk informasjon: <http://farbe.li.tu-berlin.de/> eller <http://farbe.li.tu-berlin.de/AE.HTM>

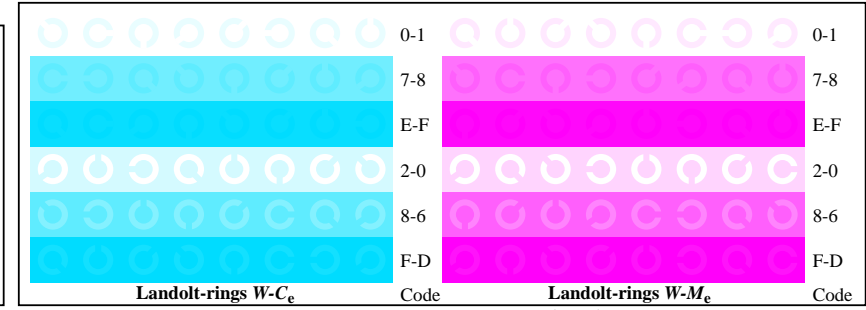
TUB Registrering: 20190301-AN26/AN26L0FA.TXT /.PS
 anvendelse for måling av display og utskriftsutgang
 TUB-materiell: code=rh4ta



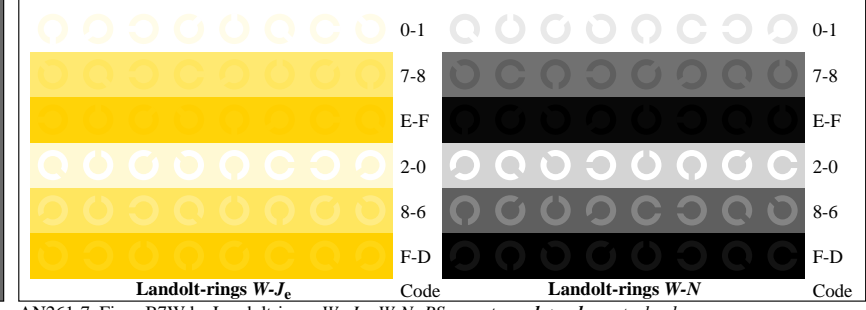
AN261-1, Figur B4Wde: 16 equidistant steps W-C_e; W-M_e; W-J_e; W-N; *rgb/cmy0->rgb_{de} setrgbcolor*



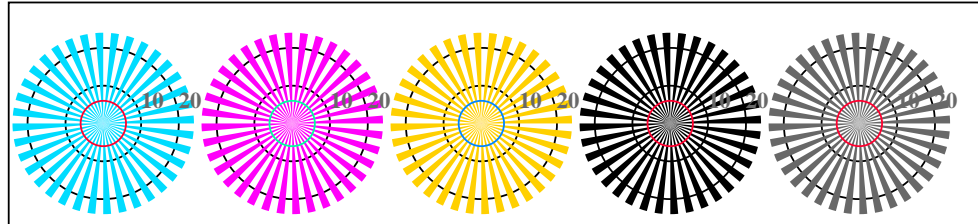
AN261-3, Figur B5Wde: Script Landoltringer N; C_e; M_e; Y_e; Z; PS operator: *rgb->rgb_{de} setrgbcolor*



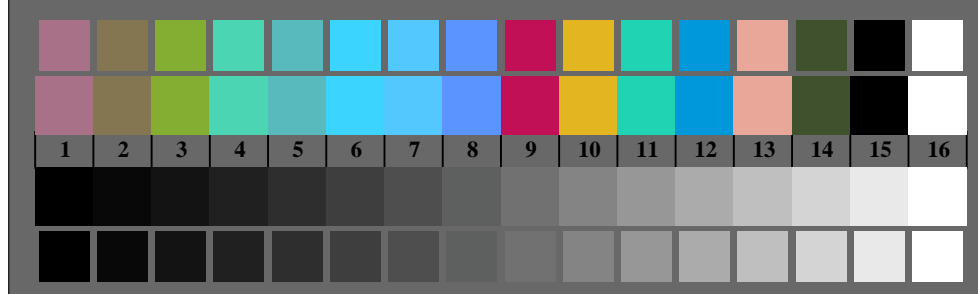
AN261-5, Figur B6Wde: Landoltringer W-C_e; W-M_e; PS operator: *rgb->rgb_{de} setrgbcolor*



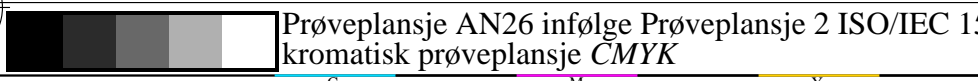
AN261-7, Figur B7Wde: Landoltringer W-J_e; W-N; PS operator: *rgb->rgb_{de} setrgbcolor*



AN260-5, Figur B2Wde: Siemens-stjerner W-C_e; W-M_e; W-J_e; W-N; PS operator: *rgb->rgb_{de} setrgbcolor*



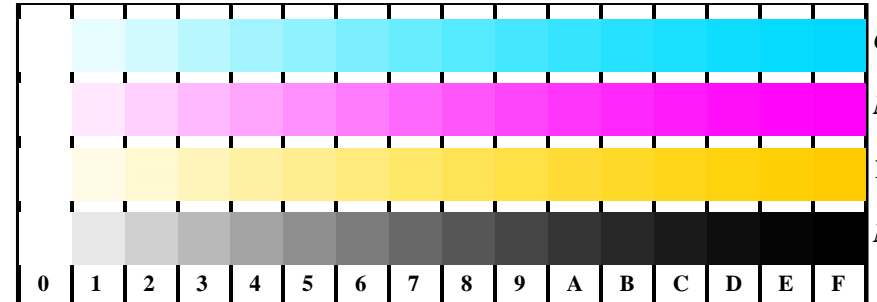
AN260-7, Figur B3Wde: 14 CIE-test colours and 2 + 16 grey steps (sf); *rgb/cmy0->rgb_{de} setrgbcolor*



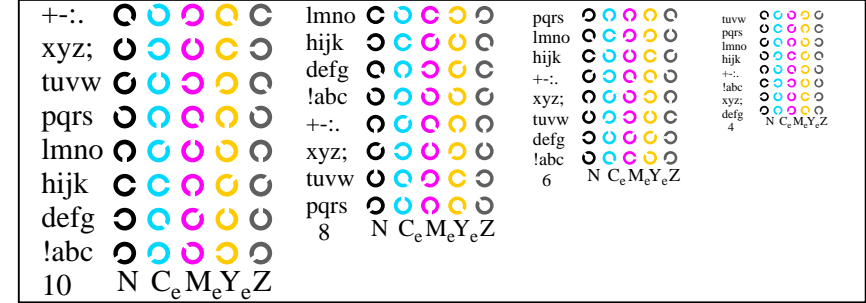
input: *rgb/cmy0/000n/w set...*
 output: *->rgb_{de} setrgbcolor*

se lignende filer: <http://farbe.li.tu-berlin.de/AN26/AN26.HTM>
 teknisk informasjon: <http://farbe.li.tu-berlin.de/> eller <http://farbe.li.tu-berlin.de/AE.HTM>

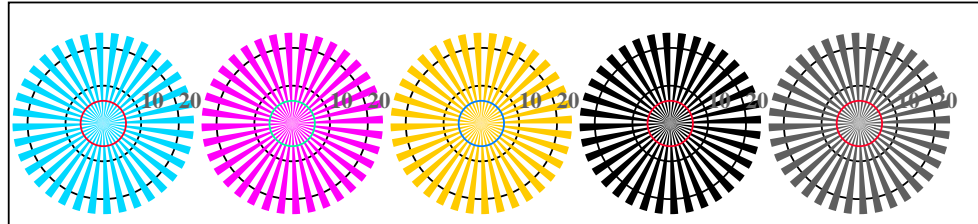
TUB Registrering: 20190301-AN26/AN26L0FA.TXT /.PS
 anvendelse for måling av display og utskriftsutgang
 TUB-materiell: code=rh4ta



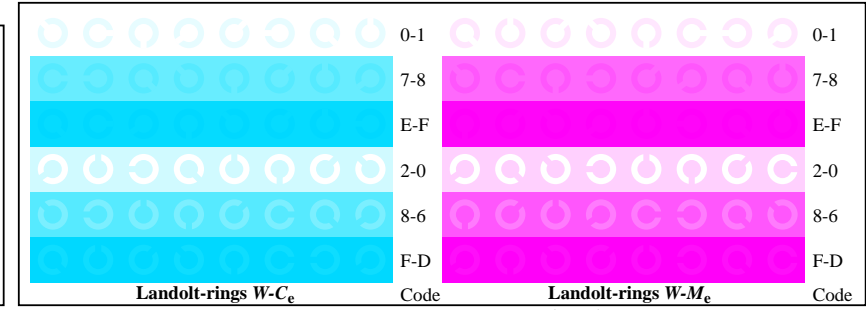
AN261-1, Figur B4Wde: 16 equidistant steps $W-C_e$; $W-M_e$; $W-J_e$; $W-N$; $rgb/cmy0 \rightarrow rgb_{de}$ setrgbcolor



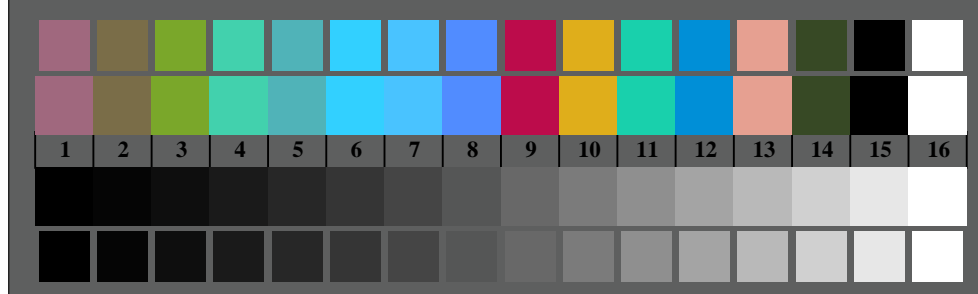
AN261-3, Figur B5Wde: Script Landoltringer N ; C_e ; M_e ; Y_e ; Z ; PS operator: $rgb \rightarrow rgb_{de}$ setrgbcolor



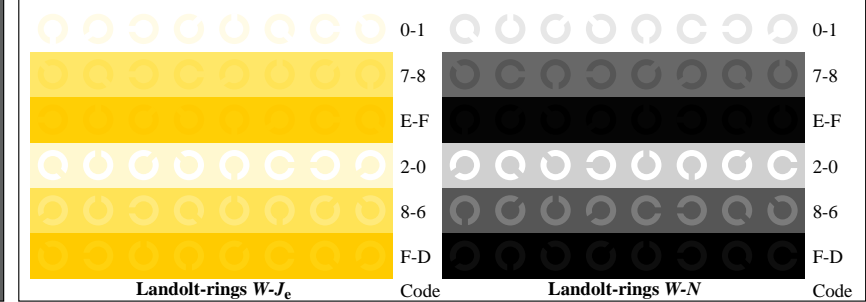
Siemens-stjerner $W-C_e$ Siemens-stjerner $W-M_e$ Siemens-stjerner $W-J_e$ Siemens-stjerner $W-N$ Siemens-stjerner $W-Z$
 AN260-5, Figur B2Wde: Siemens-stjerner $W-C_e$; $W-M_e$; $W-J_e$; $W-N$; PS operator: $rgb \rightarrow rgb_{de}$ setrgbcolor



AN261-5, Figur B6Wde: Landoltringer $W-C_e$; $W-M_e$; PS operator: $rgb \rightarrow rgb_{de}$ setrgbcolor



AN260-7, Figur B3Wde: 14 CIE-test colours and 2 + 16 grey steps (sf); $rgb/cmy0 \rightarrow rgb_{de}$ setrgbcolor



AN261-7, Figur B7Wde: Landoltringer $W-J_e$; $W-N$; PS operator: $rgb \rightarrow rgb_{de}$ setrgbcolor



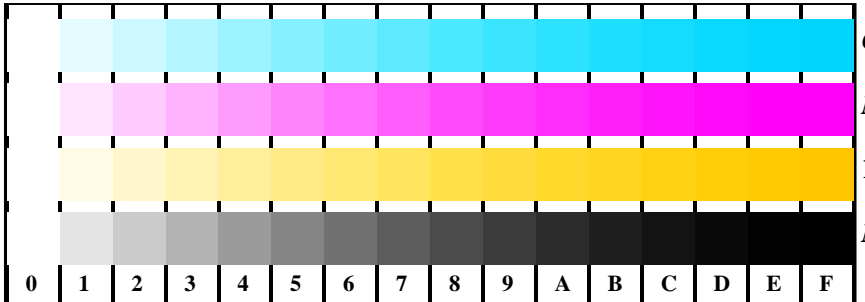
Prøveplansje AN26 infølge Prøveplansje 2 ISO/IEC 15775
 kromatisk prøveplansje CMYK

input: $rgb/cmy0/000n/w$ set...
 output: $\rightarrow rgb_{de}$ setrgbcolor

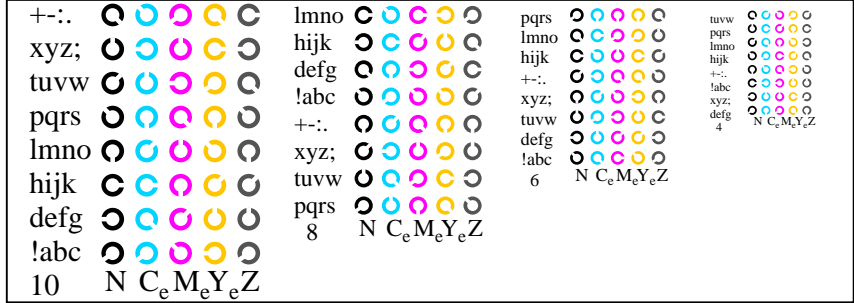


se lignende filer: <http://farbe.li.tu-berlin.de/AN26/AN26.HTM>
 teknisk informasjon: <http://farbe.li.tu-berlin.de/> eller <http://farbe.li.tu-berlin.de/AE.HTM>

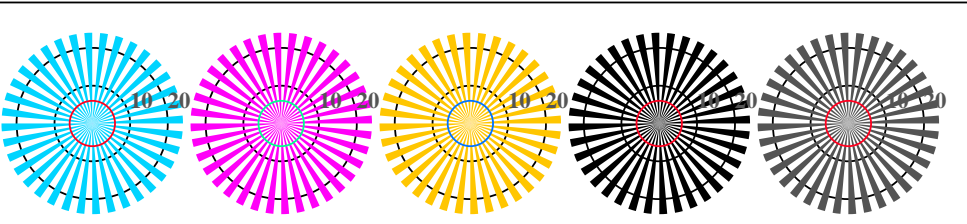
TUB Registrering: 20190301-AN26/AN26L0FA.TXT /.PS
 anvendelse for måling av display og utskriftsutgang
 TUB-materiell: code=rh4ta



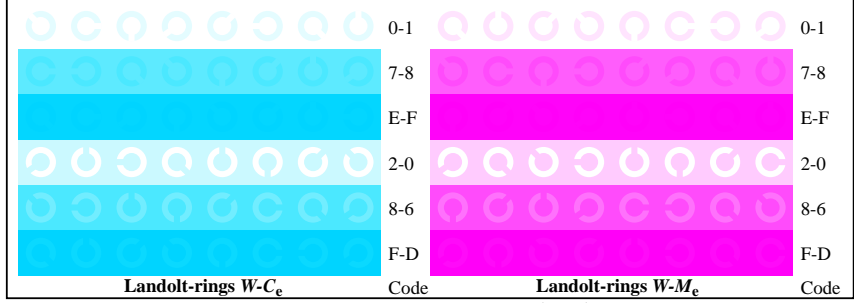
AN261-1, Figur B4Wde: 16 equidistant steps $W-C_e$; $W-M_e$; $W-J_e$; $W-N$; $rgb/cmy0 \rightarrow rgb_{de}$ setrgbcolor



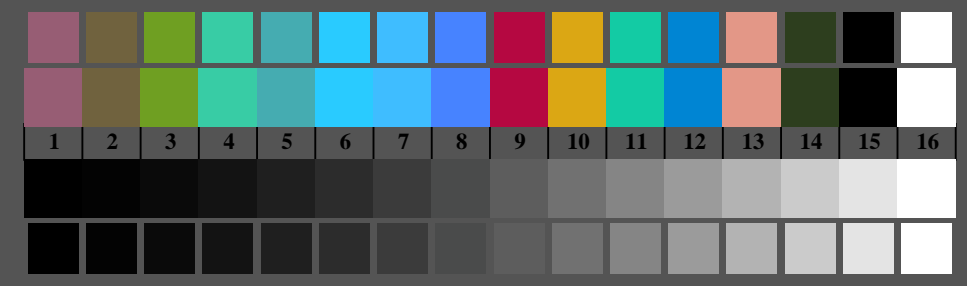
AN261-3, Figur B5Wde: Script Landoltringer N ; C_e ; M_e ; Y_e ; Z ; PS operator: $rgb \rightarrow rgb_{de}$ setrgbcolor



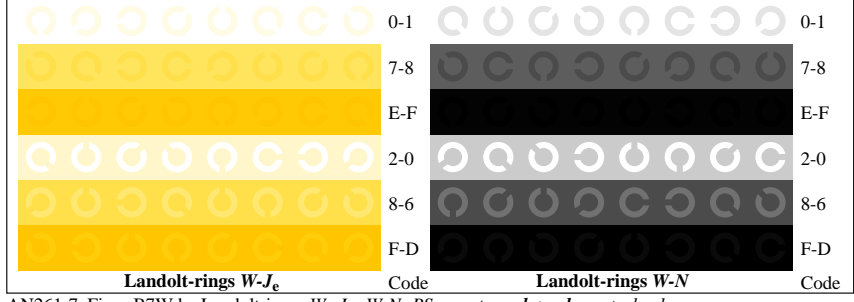
AN260-5, Figur B2Wde: Siemens-stjerner $W-C_e$; $W-M_e$; $W-J_e$; $W-N$; PS operator: $rgb \rightarrow rgb_{de}$ setrgbcolor



AN261-5, Figur B6Wde: Landoltringer $W-C_e$; $W-M_e$; PS operator: $rgb \rightarrow rgb_{de}$ setrgbcolor



AN260-7, Figur B3Wde: 14 CIE-test colours and 2 + 16 grey steps (sf); $rgb/cmy0 \rightarrow rgb_{de}$ setrgbcolor



AN261-7, Figur B7Wde: Landoltringer $W-J_e$; $W-N$; PS operator: $rgb \rightarrow rgb_{de}$ setrgbcolor



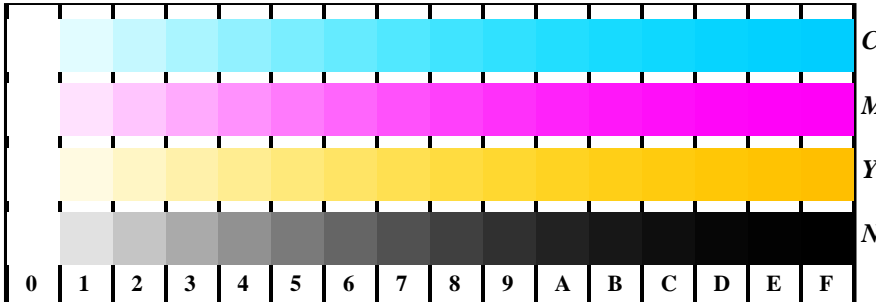
Prøveplasje AN26 infølge Prøveplasje 2 ISO/IEC 15775
 kromatisk prøveplasje CMYK

input: $rgb/cmy0/000n/w$ set...
 output: $\rightarrow rgb_{de}$ setrgbcolor

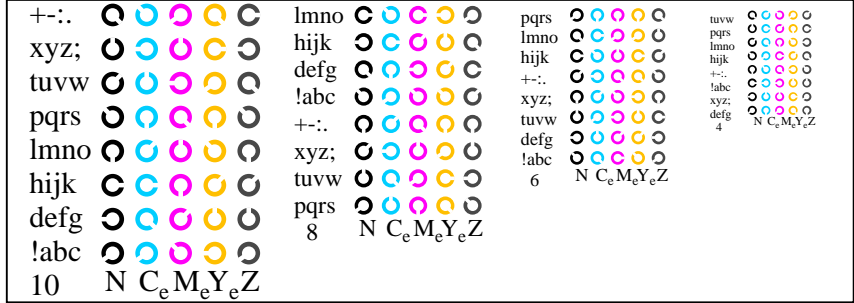


se lignende filer: <http://farbe.li.tu-berlin.de/AN26/AN26.HTM>
 teknisk informasjon: <http://farbe.li.tu-berlin.de/> eller <http://farbe.li.tu-berlin.de/AE.HTM>

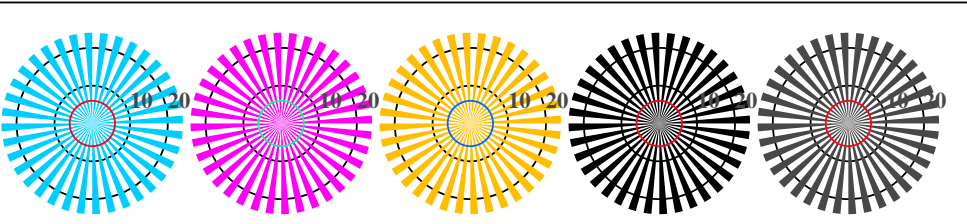
TUB Registrering: 20190301-AN26/AN26L0FA.TXT /.PS
 anvendelse for måling av display og utskriftsutgang
 TUB-materiell: code=rh4ta



AN261-1, Figur B4Wde: 16 equidistant steps $W-C_e$; $W-M_e$; $W-J_e$; $W-N$; $rgb/cmy0 \rightarrow rgb_{de}$ setrgbcolor

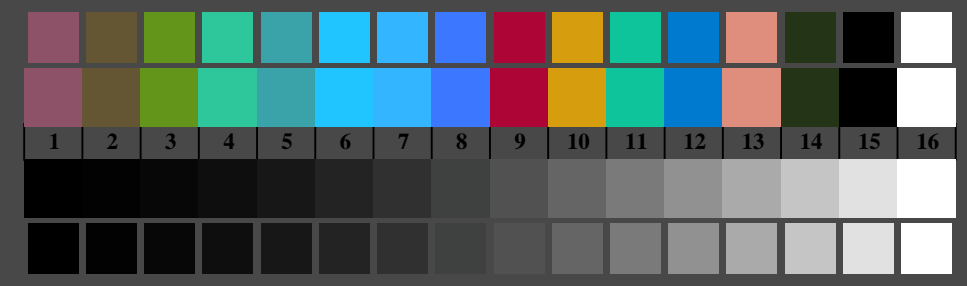


AN261-3, Figur B5Wde: Script Landoltringer N ; C_e ; M_e ; Y_e ; Z ; PS operator: $rgb \rightarrow rgb_{de}$ setrgbcolor

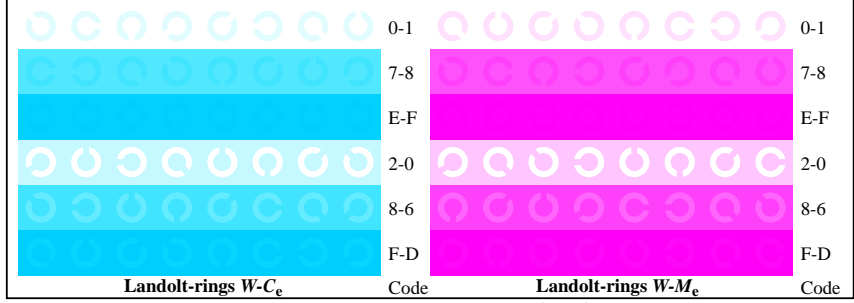


Siemens-stjerner $W-C_e$ Siemens-stjerner $W-M_e$ Siemens-stjerner $W-J_e$ Siemens-stjerner $W-N$ Siemens-stjerner $W-Z$

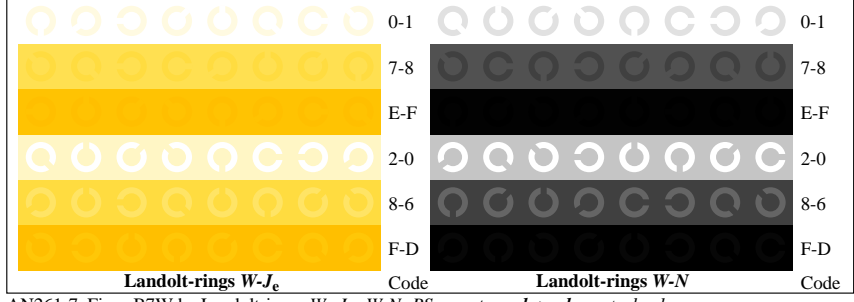
AN260-5, Figur B2Wde: Siemens-stjerner $W-C_e$; $W-M_e$; $W-J_e$; $W-N$; PS operator: $rgb \rightarrow rgb_{de}$ setrgbcolor



AN260-7, Figur B3Wde: 14 CIE-test colours and 2 + 16 grey steps (sf); $rgb/cmy0 \rightarrow rgb_{de}$ setrgbcolor



AN261-5, Figur B6Wde: Landoltringer $W-C_e$; $W-M_e$; PS operator: $rgb \rightarrow rgb_{de}$ setrgbcolor



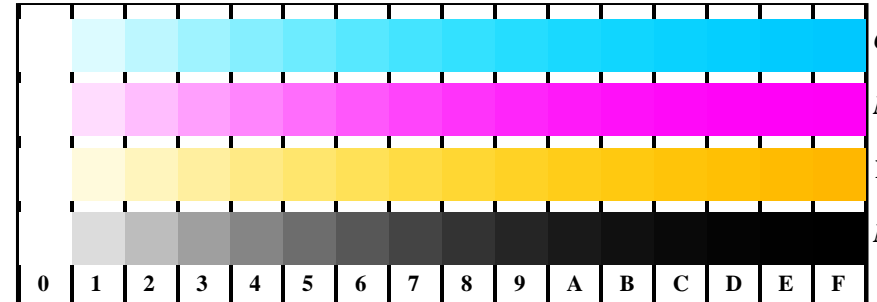
AN261-7, Figur B7Wde: Landoltringer $W-J_e$; $W-N$; PS operator: $rgb \rightarrow rgb_{de}$ setrgbcolor

Prøveplansje AN26 infølge Prøveplansje 2 ISO/IEC 15775
 kromatisk prøveplansje CMYK

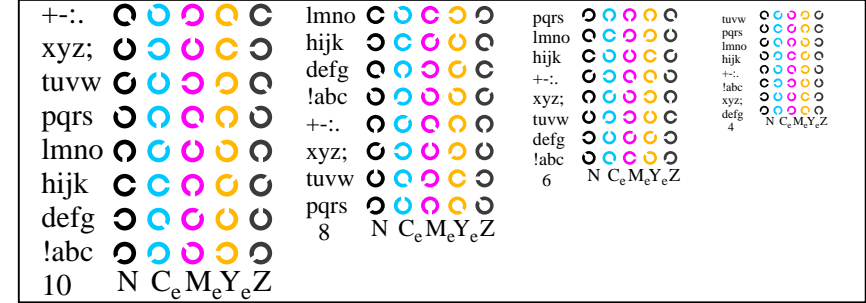
input: $rgb/cmy0/000n/w$ set...
 output: $\rightarrow rgb_{de}$ setrgbcolor

se lignende filer: <http://farbe.li.tu-berlin.de/AN26/AN26.HTM>
 teknisk informasjon: <http://farbe.li.tu-berlin.de/> eller <http://farbe.li.tu-berlin.de/AE.HTM>

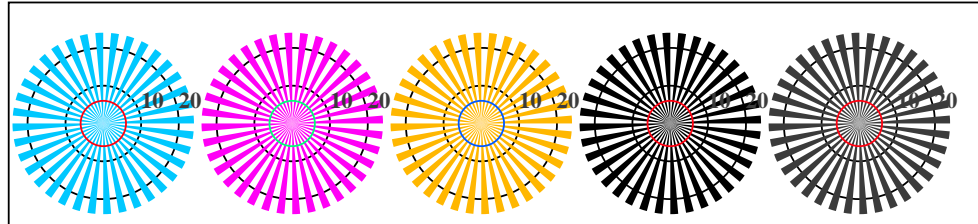
TUB Registrering: 20190301-AN26/AN26L0FA.TXT /.PS
 anvendelse for måling av display og utskriftsutgang
 TUB-materiell: code=rh4ta



AN261-1, Figur B4Wde: 16 equidistant steps $W-C_e$; $W-M_e$; $W-J_e$; $W-N$; $rgb/cmy0 \rightarrow rgb_{de}$ setrgbcolor

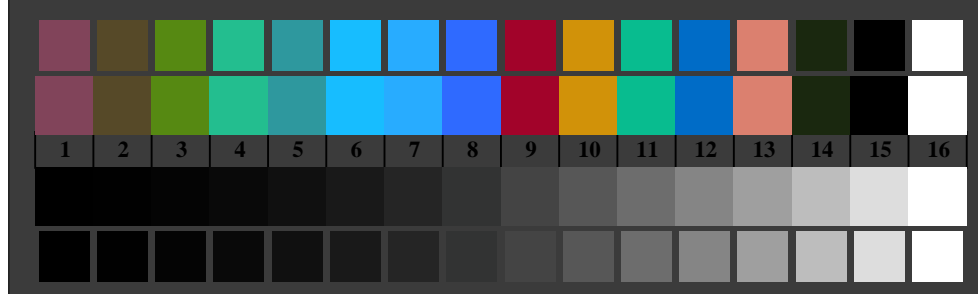


AN261-3, Figur B5Wde: Script Landoltringer N ; C_e ; M_e ; Y_e ; Z ; PS operator: $rgb \rightarrow rgb_{de}$ setrgbcolor

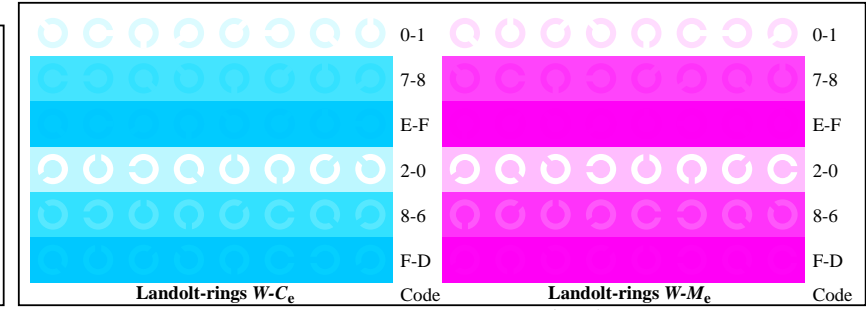


Siemens-stjerner $W-C_e$ Siemens-stjerner $W-M_e$ Siemens-stjerner $W-J_e$ Siemens-stjerner $W-N$ Siemens-stjerner $W-Z$

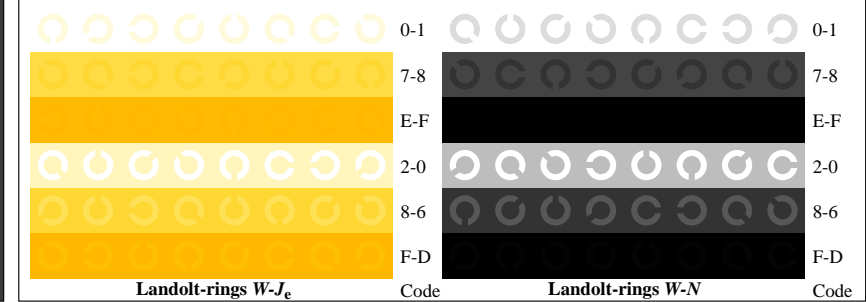
AN260-5, Figur B2Wde: Siemens-stjerner $W-C_e$; $W-M_e$; $W-J_e$; $W-N$; PS operator: $rgb \rightarrow rgb_{de}$ setrgbcolor



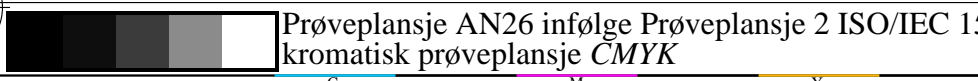
AN260-7, Figur B3Wde: 14 CIE-test colours and 2 + 16 grey steps (sf); $rgb/cmy0 \rightarrow rgb_{de}$ setrgbcolor



AN261-5, Figur B6Wde: Landoltringer $W-C_e$; $W-M_e$; PS operator: $rgb \rightarrow rgb_{de}$ setrgbcolor



AN261-7, Figur B7Wde: Landoltringer $W-J_e$; $W-N$; PS operator: $rgb \rightarrow rgb_{de}$ setrgbcolor



Prøveplansje AN26 infølge Prøveplansje 2 ISO/IEC 15775
 kromatisk prøveplansje CMYK

input: $rgb/cmy0/000n/w$ set...
 output: $\rightarrow rgb_{de}$ setrgbcolor