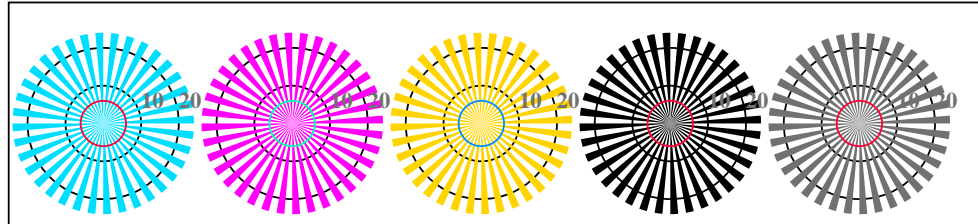


se lignende filer: <http://standards.iso.org/iso/9241/306/ed-2/AN27/AN27.HTM>
teknisk informasjon: <http://farbe.li.tu-berlin.de/> eller <http://farbe.li.tu-berlin.de/AE.HTM>

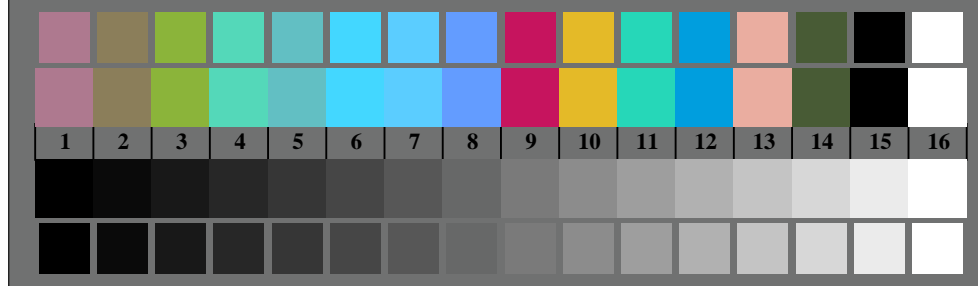


AN270-3, Figur B1Wde: Flower motif, 14 CIE-test colours og 2 + 16 gråtrinn (nf); PS operator: *settransfer*, 3 *colorimage*

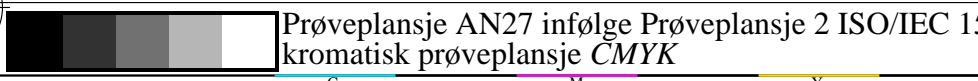


Siemens-stjerner W-C_e Siemens-stjerner W-M_e Siemens-stjerner W-J_e Siemens-stjerner W-N Siemens-stjerner W-Z

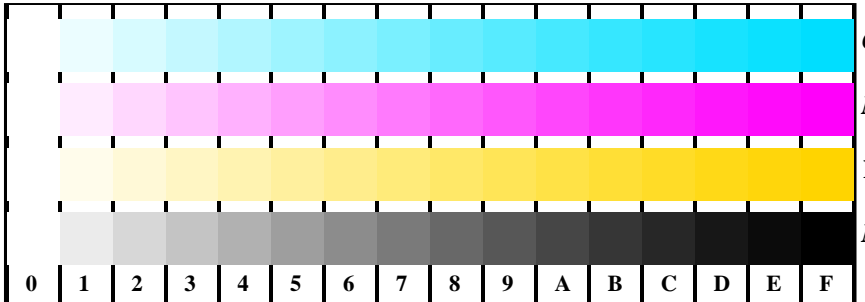
AN270-5, Figur B2Wde: Siemens-stjerner W-C_e; W-M_e; W-J_e; W-N; PS operator: *rgb->rgb_{de} setrgbcolor*



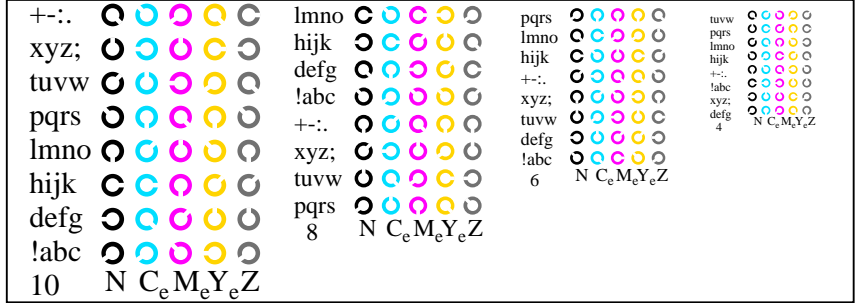
AN270-7, Figur B3Wde: 14 CIE-test colours and 2 + 16 grey steps (sf); *rgb/cmy0->rgb_{de} setrgbcolor*



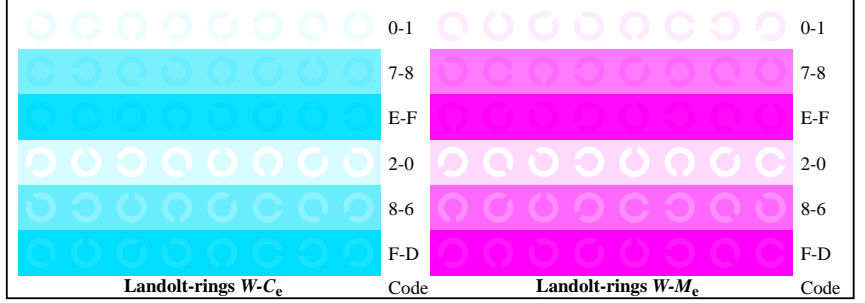
Prøveplansje AN27 infølge Prøveplansje 2 ISO/IEC 15775
kromatisk prøveplansje CMYK



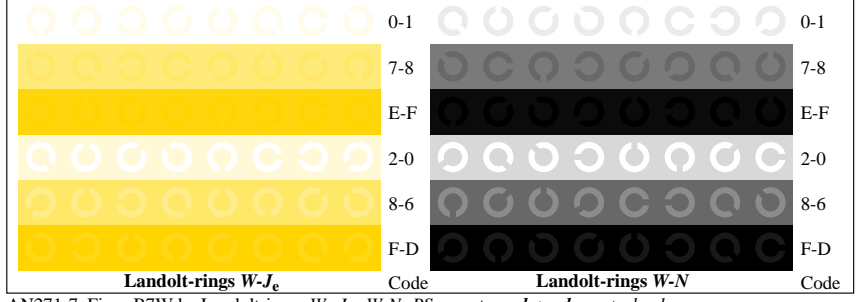
AN271-1, Figur B4Wde: 16 equidistant steps W-C_e; W-M_e; W-J_e; W-N; *rgb/cmy0->rgb_{de} setrgbcolor*



AN271-3, Figur B5Wde: Script Landoltringer N; C_e; M_e; Y_e; Z; PS operator: *rgb->rgb_{de} setrgbcolor*



AN271-5, Figur B6Wde: Landoltringer W-C_e; W-M_e; PS operator: *rgb->rgb_{de} setrgbcolor*



AN271-7, Figur B7Wde: Landoltringer W-J_e; W-N; PS operator: *rgb->rgb_{de} setrgbcolor*

input: *rgb/cmy0/000n/w set...*
output: *->rgb_{de} setrgbcolor*

TUB Registrering: 20190301-AN27/AN27L0FA.TXT /.PS
anvendelse for måling av display og utskriftsutgang

TUB-materiell: code=rh4ta