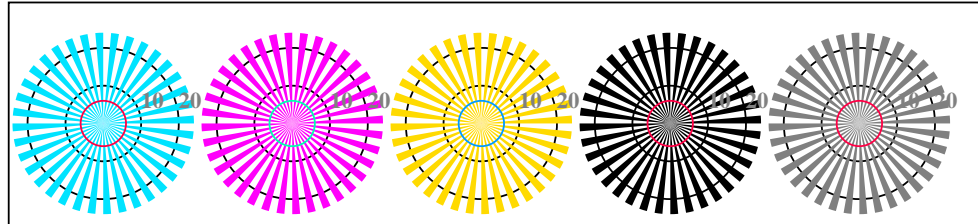


se lignende filer: <http://standards.iso.org/iso/9241/306/ed-2/AN27/AN27.HTM>  
 teknisk informasjon: <http://farbe.li.tu-berlin.de/> eller <http://farbe.li.tu-berlin.de/AE.HTM>

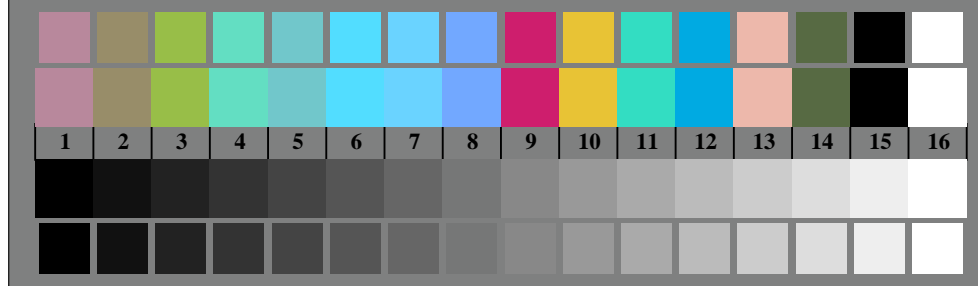


AN270-3, Figur B1Wde: Flower motif, 14 CIE-test colours og 2 + 16 gråtrinn (nf); PS operator: *settransfer*, 3 *colorimage*

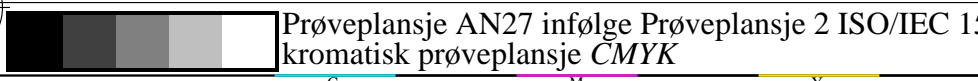


Siemens-stjerner  $W-C_e$  Siemens-stjerner  $W-M_e$  Siemens-stjerner  $W-J_e$  Siemens-stjerner  $W-N$  Siemens-stjerner  $W-Z$

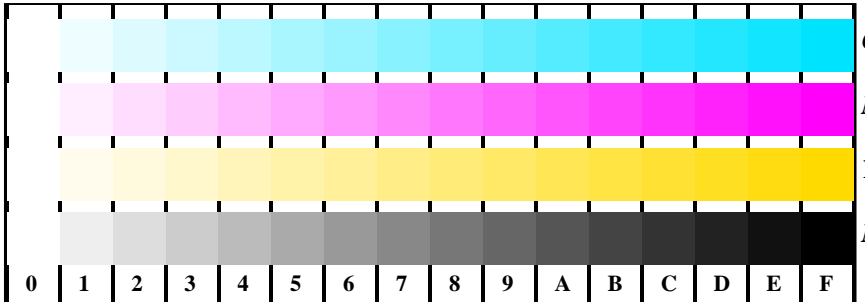
AN270-5, Figur B2Wde: Siemens-stjerner  $W-C_e$ ;  $W-M_e$ ;  $W-J_e$ ;  $W-N$ ; PS operator: *rgb->rgb<sub>de</sub> setrgbcolor*



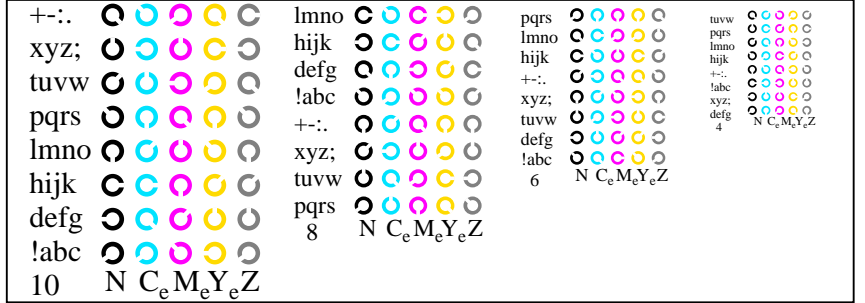
AN270-7, Figur B3Wde: 14 CIE-test colours and 2 + 16 grey steps (sf); *rgb/cmy0->rgb<sub>de</sub> setrgbcolor*



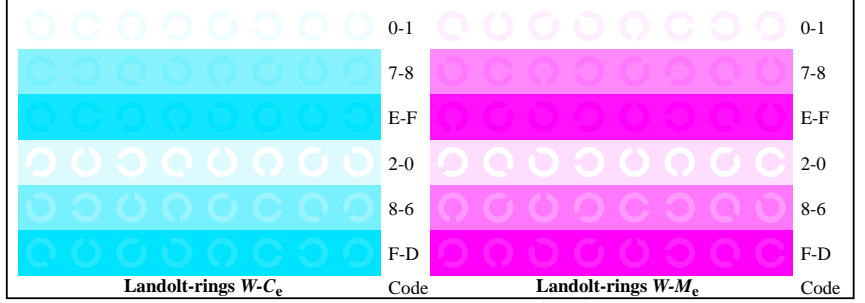
Prøveplansje AN27 infølge Prøveplansje 2 ISO/IEC 15775  
 kromatisk prøveplansje *CMYK*



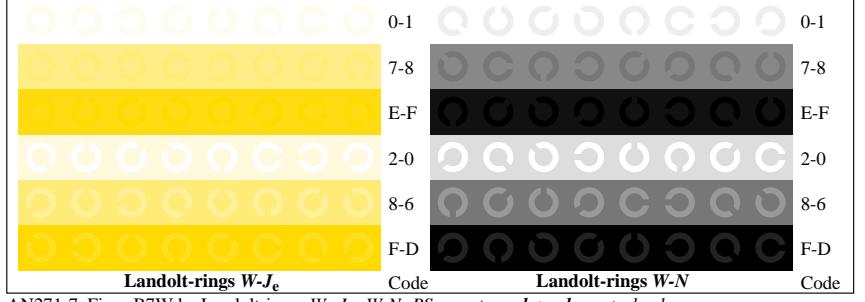
AN271-1, Figur B4Wde: 16 equidistant steps  $W-C_e$ ;  $W-M_e$ ;  $W-J_e$ ;  $W-N$ ; *rgb/cmy0->rgb<sub>de</sub> setrgbcolor*



AN271-3, Figur B5Wde: Script Landoltringer  $N$ ;  $C_e$ ;  $M_e$ ;  $Y_e$ ;  $Z$ ; PS operator: *rgb->rgb<sub>de</sub> setrgbcolor*



AN271-5, Figur B6Wde: Landoltringer  $W-C_e$ ;  $W-M_e$ ; PS operator: *rgb->rgb<sub>de</sub> setrgbcolor*



AN271-7, Figur B7Wde: Landoltringer  $W-J_e$ ;  $W-N$ ; PS operator: *rgb->rgb<sub>de</sub> setrgbcolor*

input: *rgb/cmy0/000n/w set...*  
 output: *->rgb<sub>de</sub> setrgbcolor*

TUB Registrering: 20190301-AN27/AN27L0FA.TXT /.PS  
 anvendelse for måling av display og utskriftsutgang

TUB-materiell: code=rh4ta