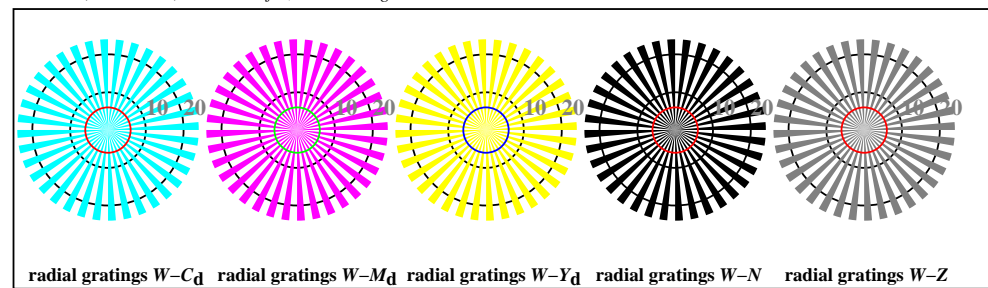
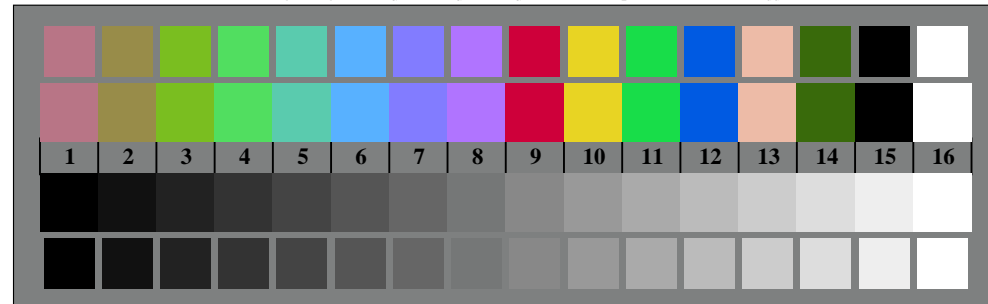




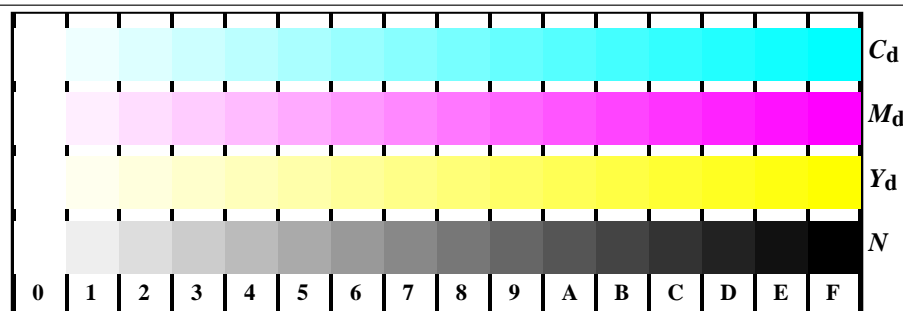
AN280-3, B1W*dd: ; PS settransfer, 3 colorimage



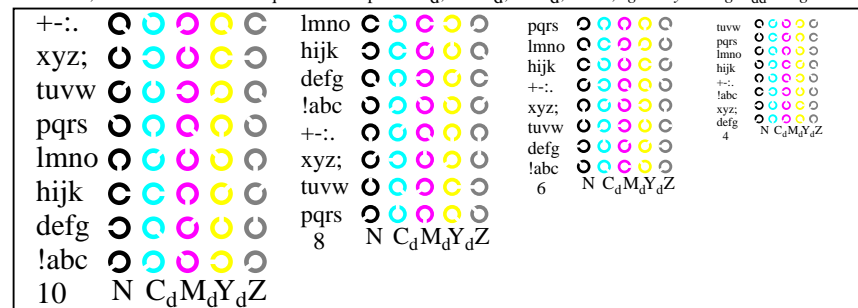
AN280-5, Picture B2W*dd: radial gratings W-C_d; W-M_d; W-Y_d; W-N; PS operator rgb->rgb*_{dd} setrgbcolor



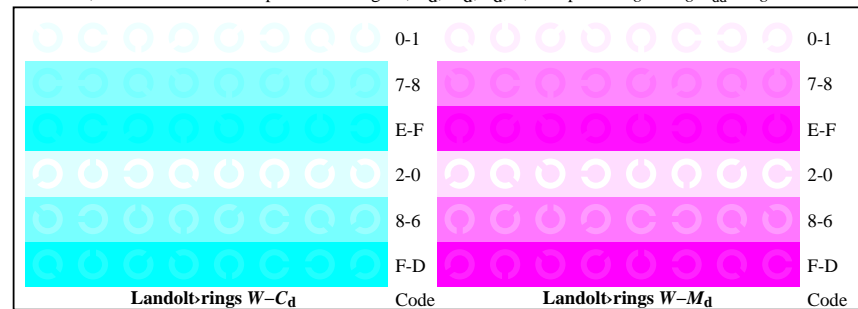
AN280-7, Picture B3W*dd: 14 CIE-test colours and 2 + 16 grey steps (sf); rgb/cmy0->rgb*_{dd} setrgbcolor



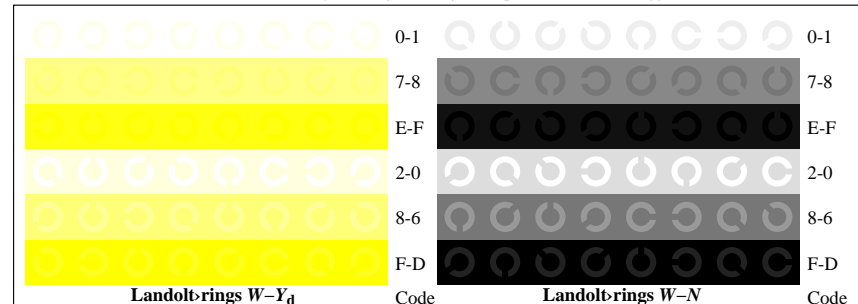
AN281-1, Picture B4W*dd: 16 equidistant steps W-C_d; W-M_d; W-Y_d; W-N; rgb/cmy0->rgb*_{dd} setrgbcolor



AN281-3, Picture B5W*dd: Script Landolt-rings N; C_d; M_d; Y_d; Z; PS operator rgb->rgb*_{dd} setrgbcolor



AN281-5, Picture B6W*dd: Landolt-rings W-C_d; W-M_d; PS operator rgb->rgb*_{dd} setrgbcolor



AN281-7, Picture B7W*dd: Landolt-rings W-Y_d; W-N; PS operator rgb->rgb*_{dd} setrgbcolor