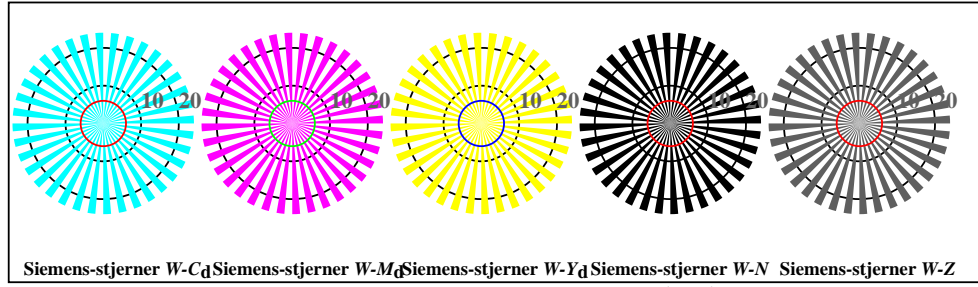


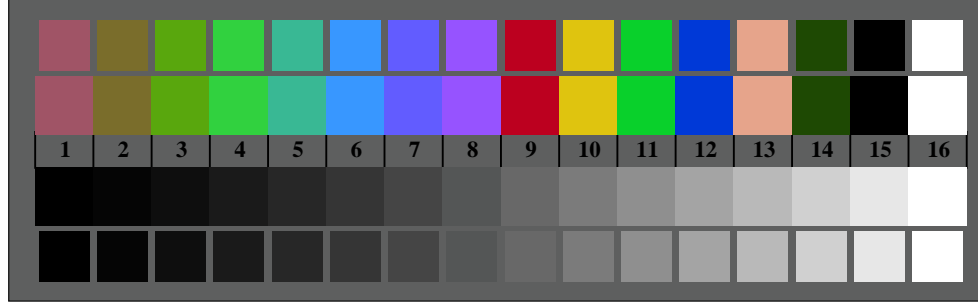
se lignende filer: <http://standards.iso.org/iso/9241/306/ed-2/AN28/AN28.HTM>
 teknisk informasjon: <http://farbe.li.tu-berlin.de/> eller <http://farbe.li.tu-berlin.de/AE.HTM>



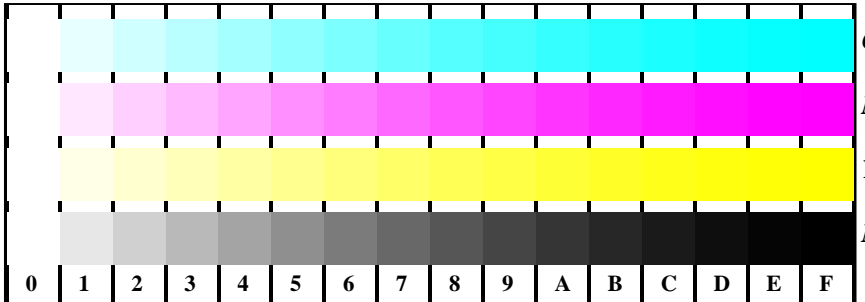
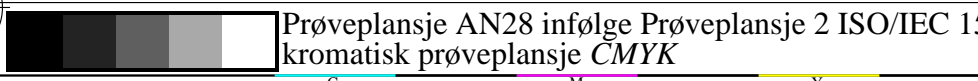
AN280-3, Figur B1Wdd: Flower motif, 14 CIE-test colours og 2 + 16 gråtrinn (nf); PS operator: *settransfer*, 3 colorimage



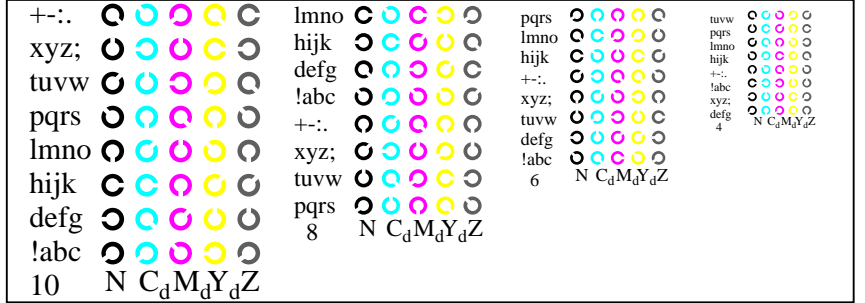
AN280-5, Figur B2Wdd: Siemens-stjerner W-C_d; W-M_d; W-Y_d; W-N; PS operator: *rgb->rgb_{dd} setrgbcolor*



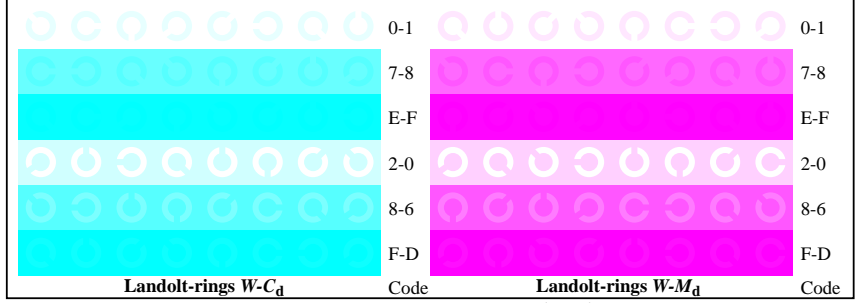
AN280-7, Figur B3Wdd: 14 CIE-test colours and 2 + 16 grey steps (sf); *rgb/cmy0->rgb_{dd} setrgbcolor*



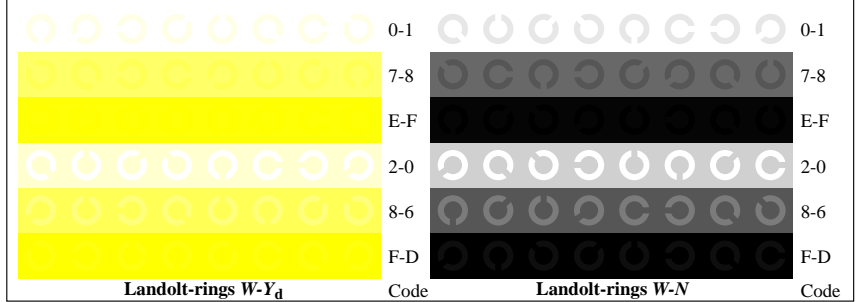
AN281-1, Figur B4Wdd: 16 equidistant steps W-C_d; W-M_d; W-Y_d; W-N; *rgb/cmy0->rgb_{dd} setrgbcolor*



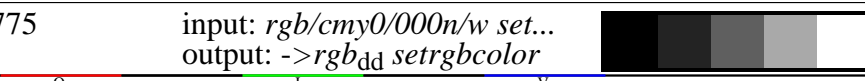
AN281-3, Figur B5Wdd: Script Landoltringer N; C_d; M_d; Y_d; Z; PS operator: *rgb->rgb_{dd} setrgbcolor*



AN281-5, Figur B6Wdd: Landoltringer W-C_d; W-M_d; PS operator: *rgb->rgb_{dd} setrgbcolor*



AN281-7, Figur B7Wdd: Landoltringer W-Y_d; W-N; PS operator: *rgb->rgb_{dd} setrgbcolor*



TUB Registrering: 20190301-AN28/AN28L0FA.TXT /.PS
 søknad om måling og visning av utgang på display og utskrift

TUB-materiell: code=rh4ta