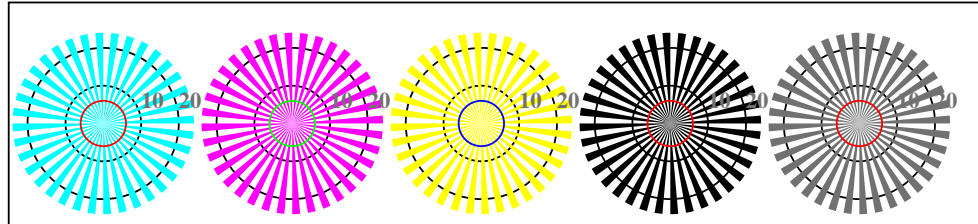


se lignende filer: <http://standards.iso.org/iso/9241/306/ed-2/AN28/AN28LONA.PDF /.PS>  
teknisk informasjon: <http://farbe.li.tu-berlin.de/> eller <http://farbe.li.tu-berlin.de/AE.HTM>

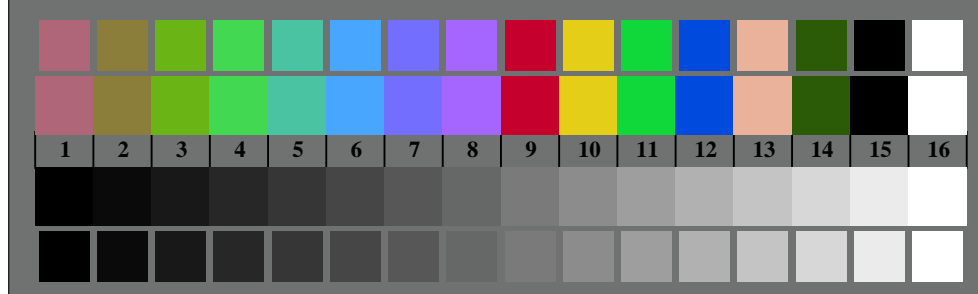
TUB Registrering: 20190301-AN28/AN28L0FA.TXT /.PS  
søknad om måling og visning av utgang på display og utskrift  
TUB-materiell: code=rh4ta



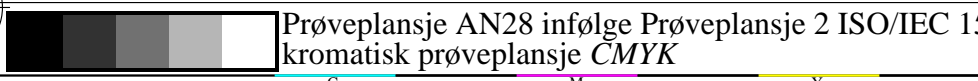
AN280-3, Figur B1Wdd: Flower motif, 14 CIE-test colours og 2 + 16 gråtrinn (nf); PS operator: *settransfer*, 3 *colorimage*



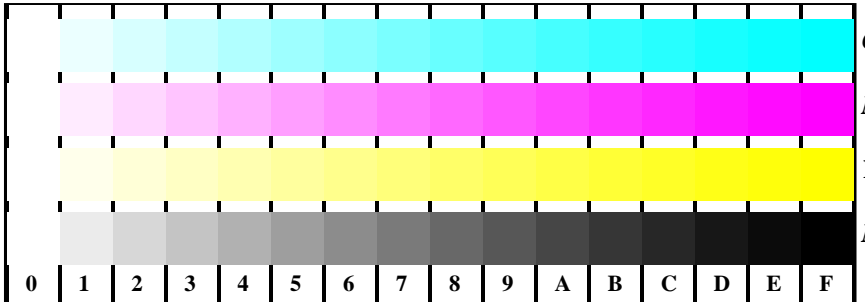
AN280-5, Figur B2Wdd: Siemens-stjerner W-C<sub>d</sub>; W-M<sub>d</sub>; W-Y<sub>d</sub>; W-N; PS operator: *rgb->rgb<sub>dd</sub> setrgbcolor*



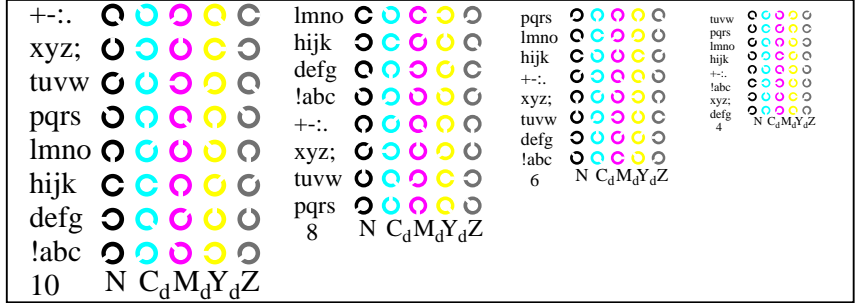
AN280-7, Figur B3Wdd: 14 CIE-test colours and 2 + 16 grey steps (sf); *rgb/cmy0->rgb<sub>dd</sub> setrgbcolor*



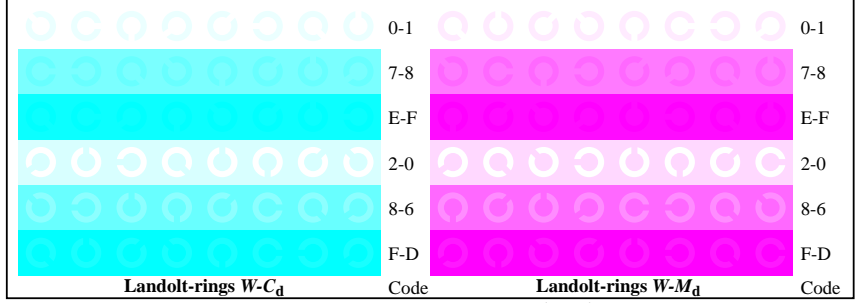
Prøveplansje AN28 infølge Prøveplansje 2 ISO/IEC 15775  
kromatisk prøveplansje CMYK



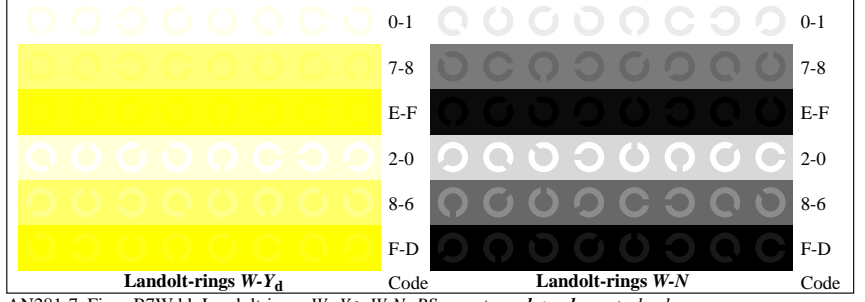
AN281-1, Figur B4Wdd: 16 equidistant steps W-C<sub>d</sub>; W-M<sub>d</sub>; W-J<sub>d</sub>; W-N; *rgb/cmy0->rgb<sub>dd</sub> setrgbcolor*



AN281-3, Figur B5Wdd: Script Landoltringer N; C<sub>d</sub>; M<sub>d</sub>; Y<sub>d</sub>; Z; PS operator: *rgb->rgb<sub>dd</sub> setrgbcolor*



AN281-5, Figur B6Wdd: Landoltringer W-C<sub>d</sub>; W-M<sub>d</sub>; PS operator: *rgb->rgb<sub>dd</sub> setrgbcolor*



AN281-7, Figur B7Wdd: Landoltringer W-Y<sub>d</sub>; W-N; PS operator: *rgb->rgb<sub>dd</sub> setrgbcolor*

input: *rgb/cmy0/000n/w set...*  
output: *->rgb<sub>dd</sub> setrgbcolor*