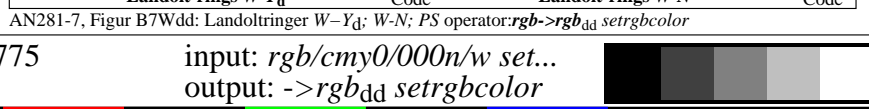
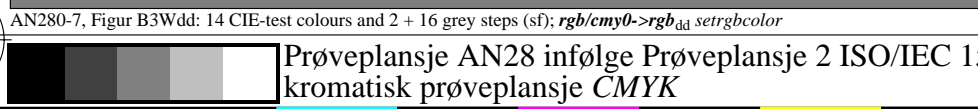
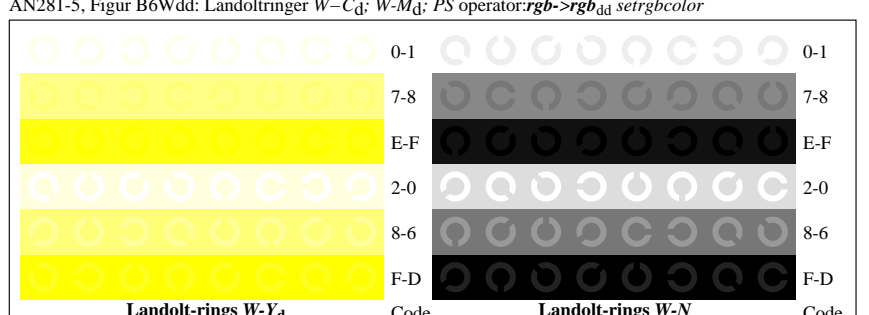
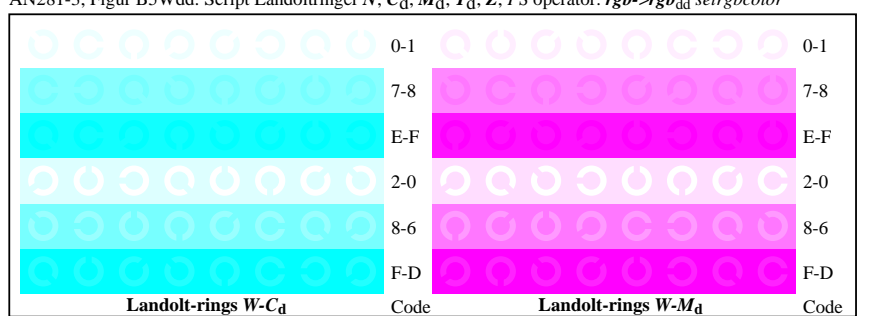
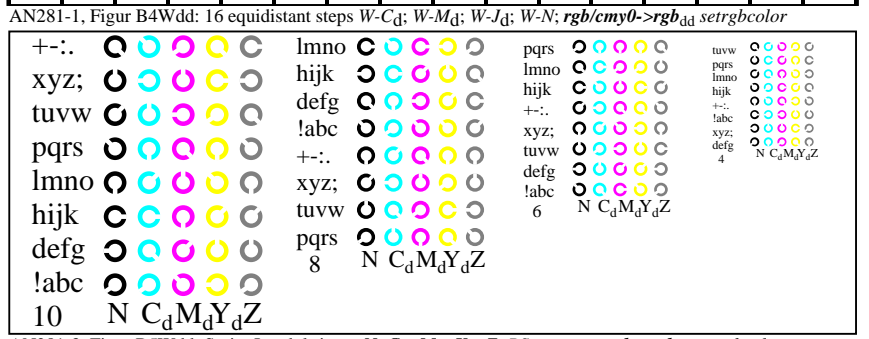
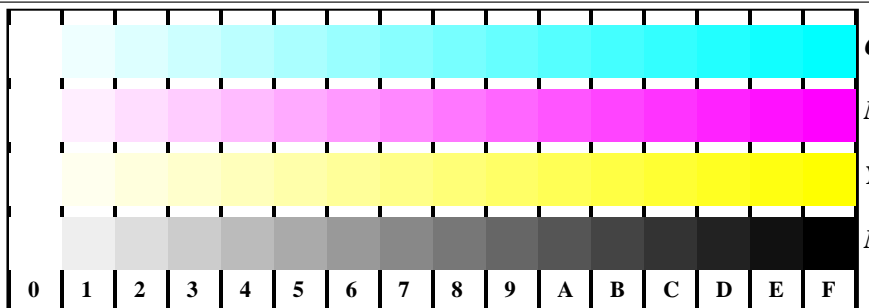
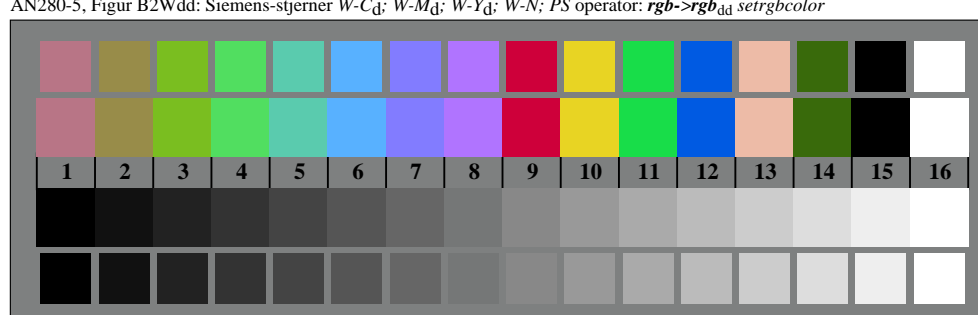
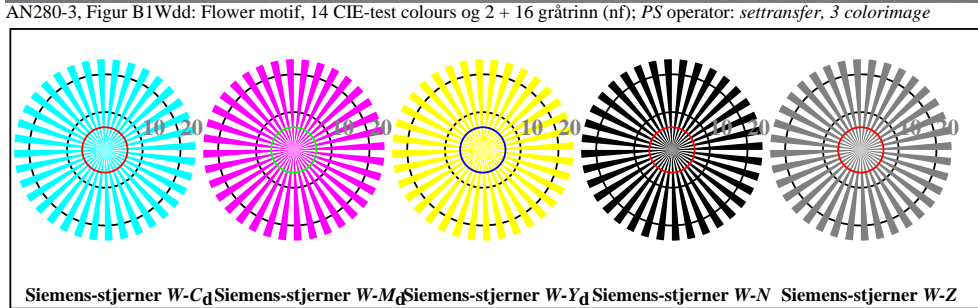
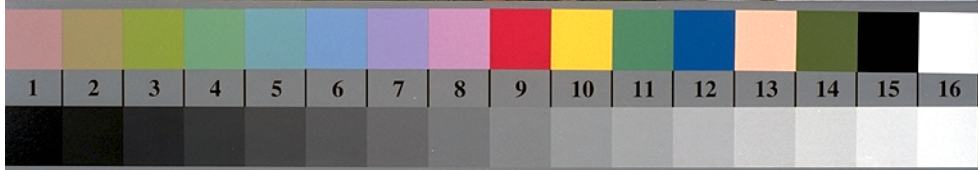


se lignende filer: <http://standards.iso.org/iso/9241/306/ed-2/AN28/AN28L1NP.PDF>
 teknisk informasjon: <http://farbe.li.tu-berlin.de/> eller <http://farbe.li.tu-berlin.de/AE.HTM>

TUB Registering: 20190301-AN28/AN28L1NP.PDF /.PS
 søknad om måling og visning av utgang på utgang på display og utskrift
 TUB-materiell: code=rha4ta



Prøveplansje AN28 infølge Prøveplansje 2 ISO/IEC 15775
 kromatisk prøveplansje CMYK

input: `rgb/cmy0/000n/w set...`
 output: `->rgbdd setrgbcolor`