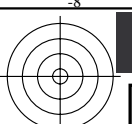


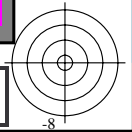
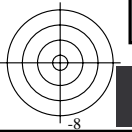
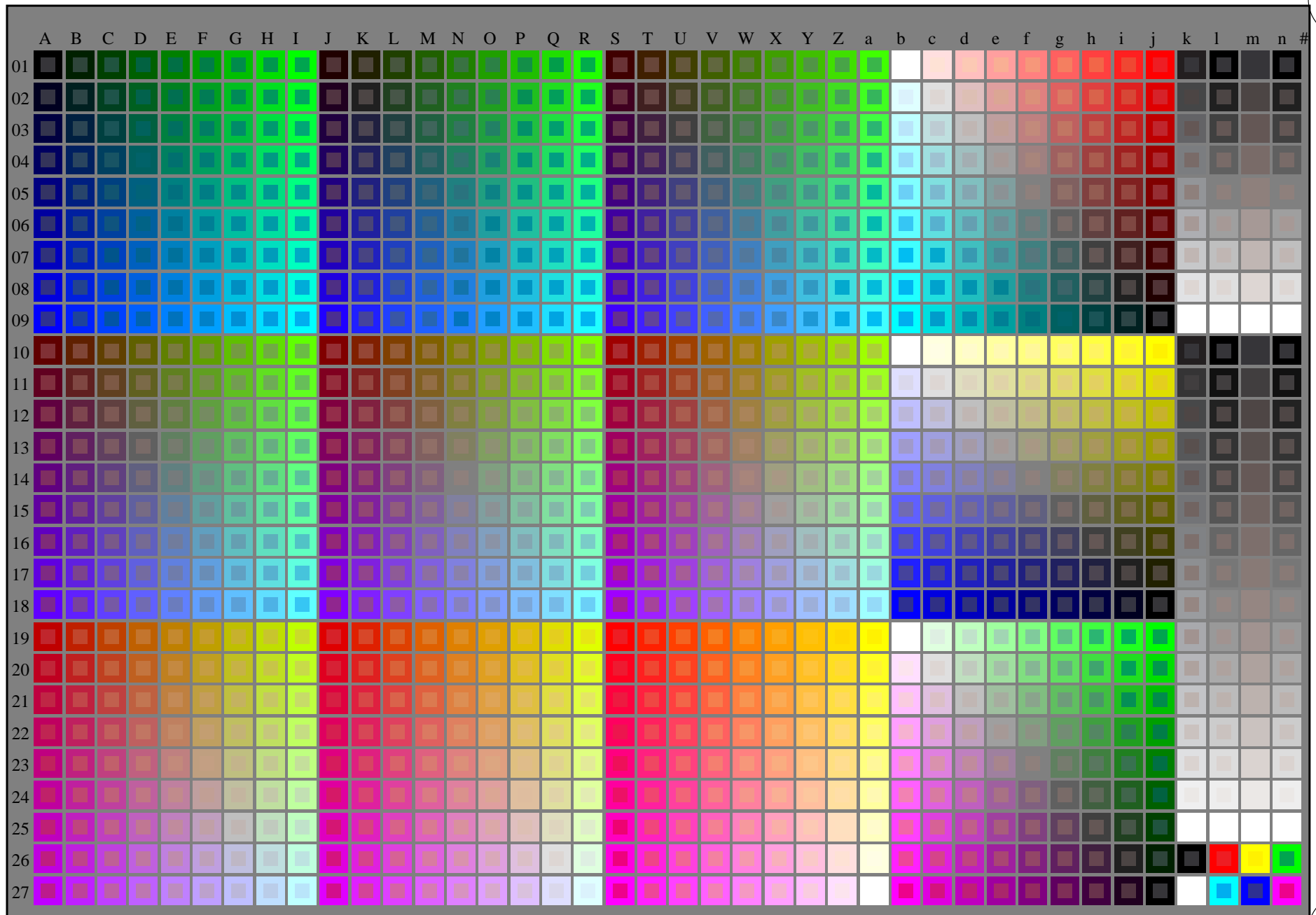
http://farbe.li.tu-berlin.de/AN85/AN85L0NA.TXT /.PS; start output
N: ingen 3D-linearisering (OL) i fil (F) eller PS-startup (S), side 1/2



se lignende filer: <http://farbe.li.tu-berlin.de/AN85/AN85.HTM>
teknisk informasjon: <http://www.ps.bam.de> eller <http://130.149.60.45/~farbmetrik>

TUB registrering: 20160501-AN85/AN85L0NA.TXT /.PS
anvendelse for måling av photoprinter output

TUB-materiell: code=rha4ta



5-003030-L0 cmy6

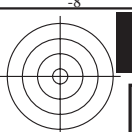
AN850-70N

Prøveplansje G med 1080 farger; 9- eller 16-trinns fargeskala; data i kolonne (A-n): $rgb + cmy0(A_j + k26_n27), 000n(k), w(l), mnn0(m), www(n)$

TUB-testplansje AN85; standard test chart G, TUB GE20
1080 standard farger; billed-teknologi

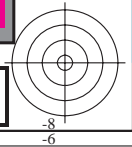
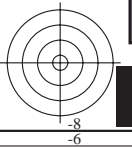
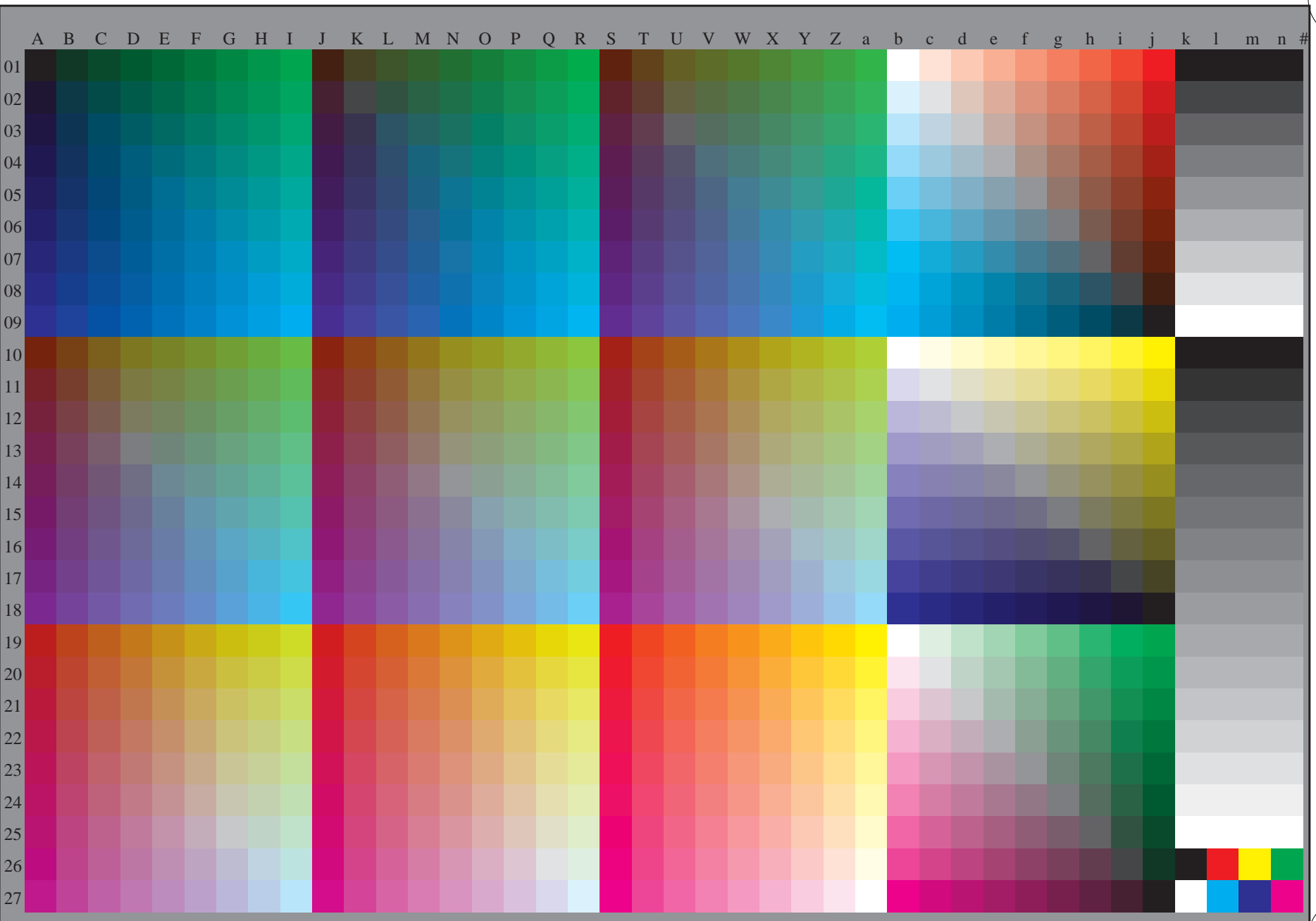
input: $rgb/cmyk \rightarrow rgb/cmyk$
output: ingen endring



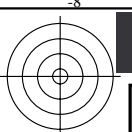


se lignende filer: <http://farbe.li.tu-berlin.de/AN85/AN85.HTM>
teknisk informasjon: <http://www.ps.bam.de> eller <http://130.149.60.45/~farbmetrik>

TUB registrering: 20160501-AN85/AN85L0NA.TXT /.PS TUB-materiell: code=rh4ta
anvendelse for måling av photoprinter output, separasjon rgb (CMYK)



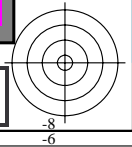
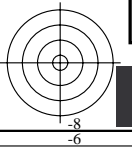
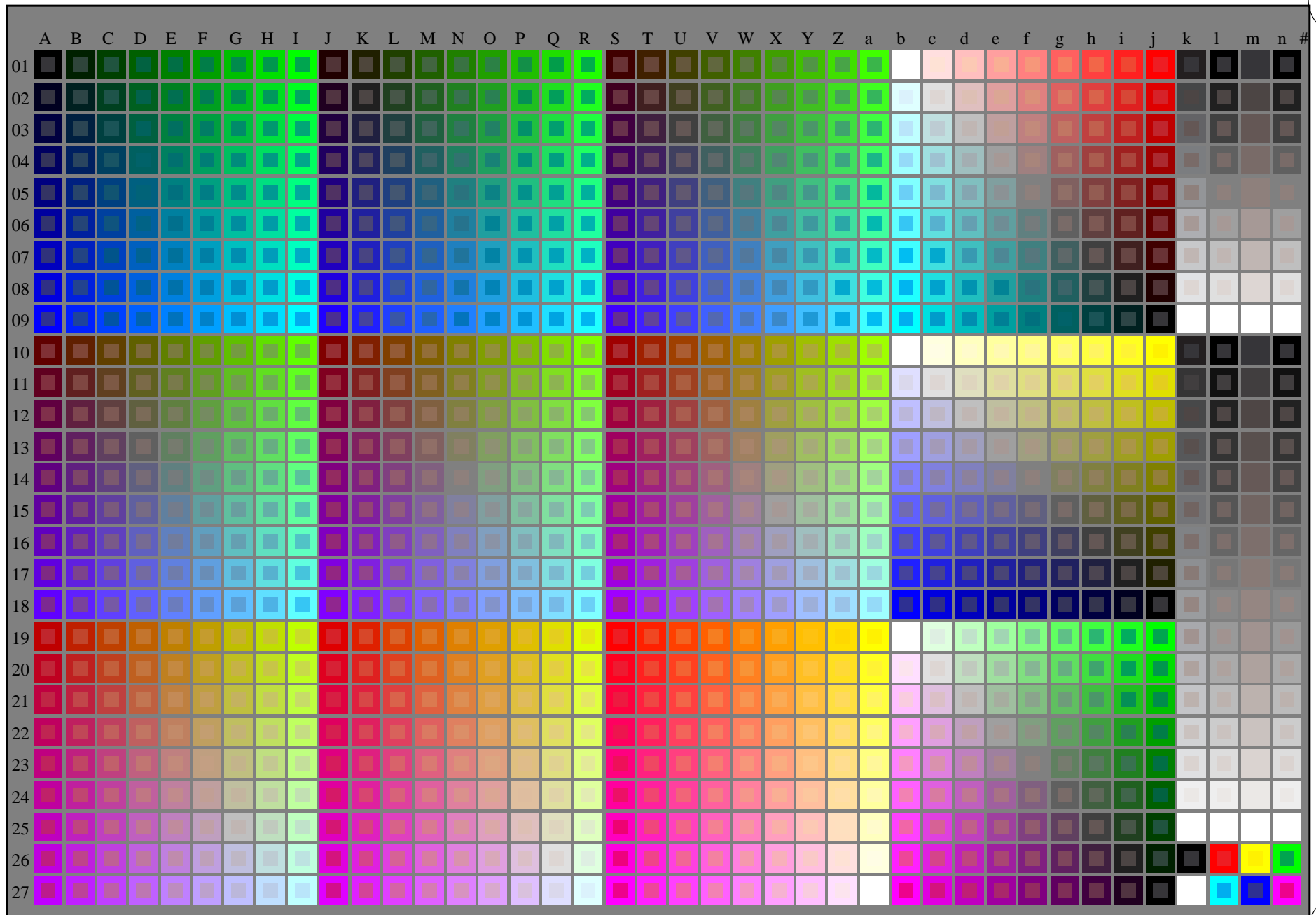
http://farbe.li.tu-berlin.de/AN85/AN85L0NA.TXT /.PS; start output
N: ingen 3D-linearisering (OL) i fil (F) eller PS-startup (S), side 1/2



se lignende filer: <http://farbe.li.tu-berlin.de/AN85/AN85.HTM>
teknisk informasjon: <http://www.ps.bam.de> eller <http://130.149.60.45/~farbmetrik>

TUB registrering: 20160501-AN85/AN85L0NA.TXT /.PS
anvendelse for måling av photoprinter output

TUB-materiell: code=rha4ta



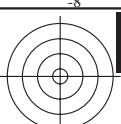
5-013030-L0 cmyn6 AN850-70N Prøveplansje G med 1080 farger; 9- eller 16-trinns fargeskala; data i kolonne (A-n): $rgb + cmy0 (A_j + k26_n27), 000n (k), w (l), mnn0 (m), www (n)$

TUB-testplansje AN85; standard test chart G, TUB GE20
1080 standard farger; billed-teknologi

input: $rgb/cmyk \rightarrow rgb/cmyk$
output: ingen endring

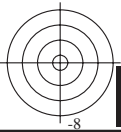
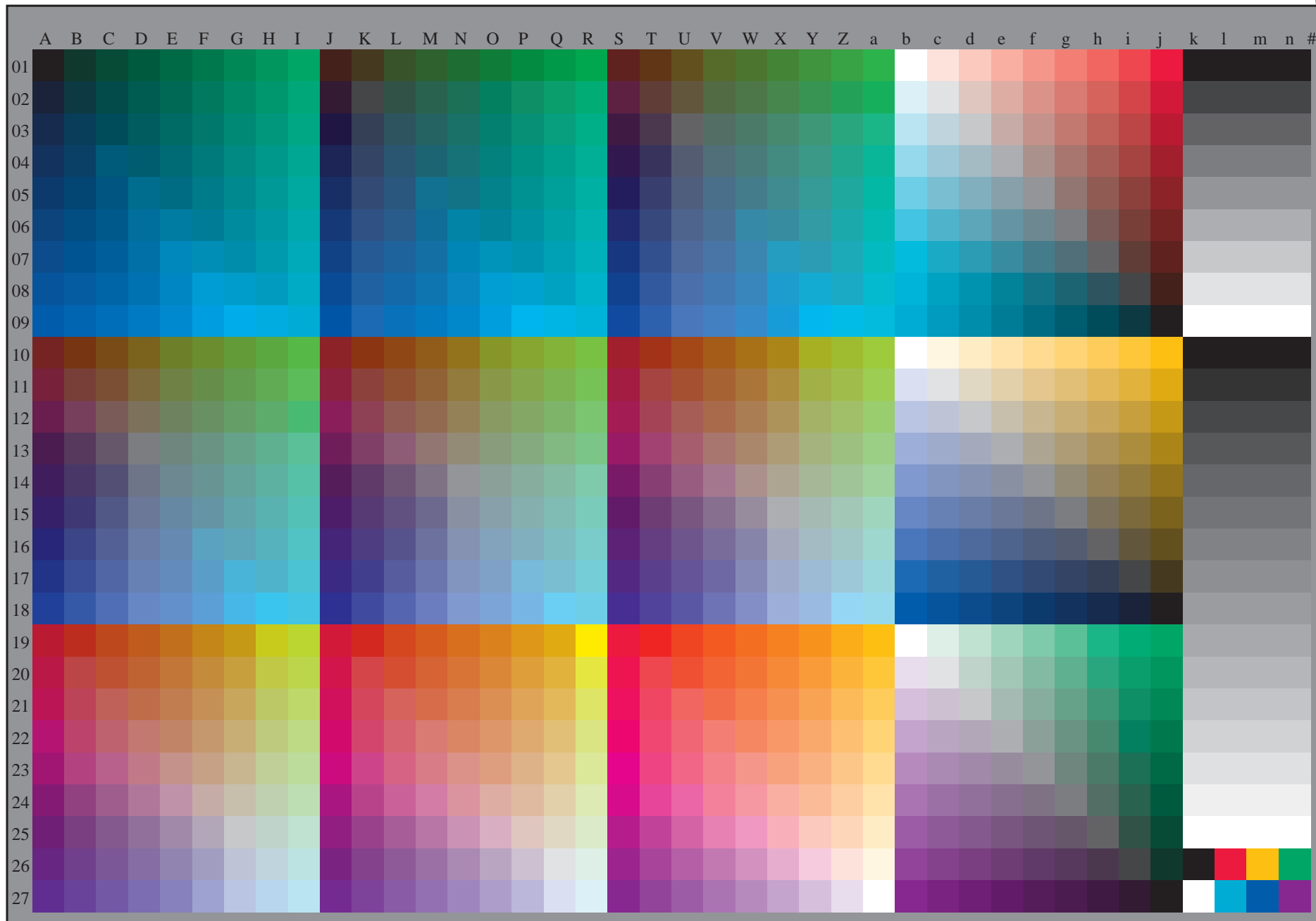


http://farbe.li.tu-berlin.de/AN85/AN85L0NA.TXT /.PS; overføring output
N: ingen 3D-linearisering (OL) i fil (F) eller PS-startup (S), side 2/2



se lignende filer: <http://farbe.li.tu-berlin.de/AN85/AN85.HTM>
teknisk informasjon: <http://www.ps.bam.de> eller <http://130.149.60.45/~farbmetrik>

TUB registrering: 20160501-AN85/AN85L0NA.TXT /.PS TUB-materiell: code=rha4ta
anvendelse for måling av photoprinter output, separasjon rgb (CMYK)



5-013130-L0 cmyn6 AN850-711 Prøveplansje G med 1080 farger; 9- eller 16-trinns fargeskala; data i kolonne (A-n):cmyn6 (A_n)

TUB-testplansje AN85; standard test chart G, TUB GE20
1080 standard farger, 3D=0, de=1, RGB

input: *rgb/cmyk* -> *rgb_e*
output: overføring til *rgb_e*

