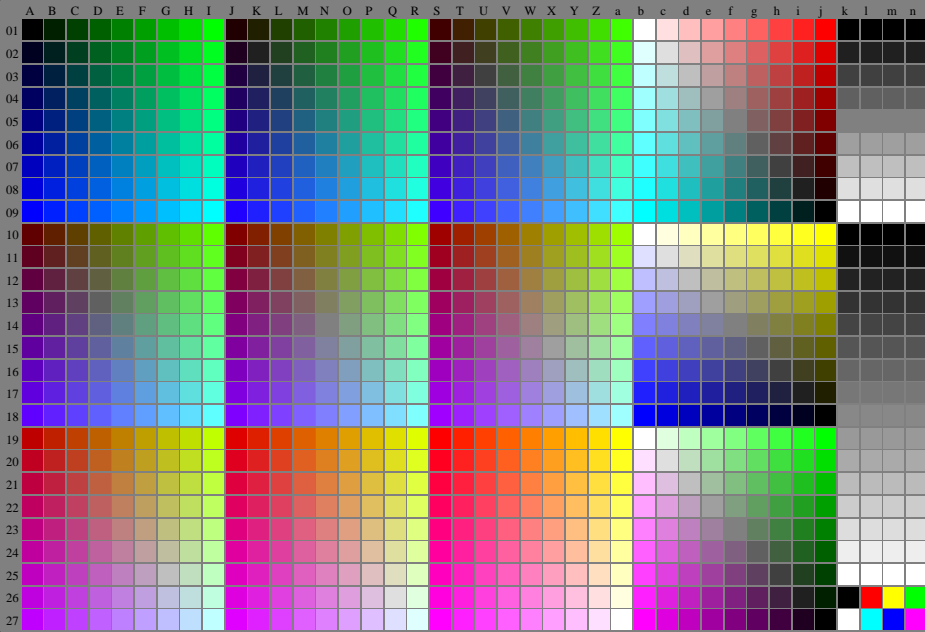


http://farbe.li.tu-berlin.de/AN89/AN89L0N1.TXT /PS; start output  
N: No Output Linearization (OL) data in File (F), Startup (S) or Device (D)1/16

se liggende filer: <http://farbe.li.tu-berlin.de/AN89/AN89.HTM>  
teknisk informasjon: <http://www.ps.bam.de/eller> <http://130.149.60.45/~farbmetrik>



AN890-7N, 1/16

Tr=0%, (Fadin)

rgb setrgbcolor

TUB registering: 20160501-AN89/AN89L0N1.TXT /PS  
application for measurement of printer or monitor systems

TUB-materiell: code=tha4ta