

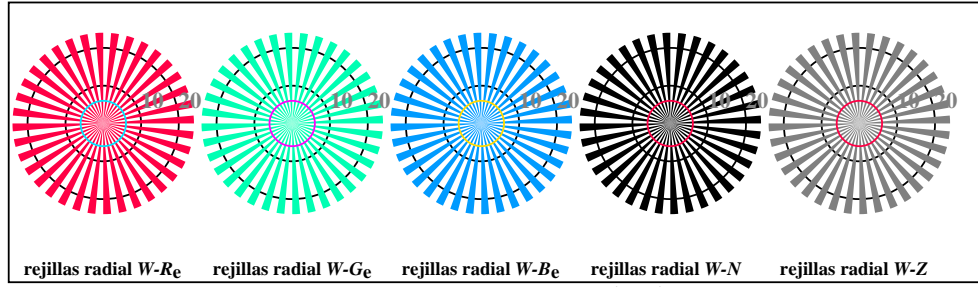
vea archivos semejantes: [http://standards.iso.org/iso/9241/306/ed-2/AS17/AS17LONA.PDF /.PS/1/24, rgb/cmy0/000n/w->rgb\\_de](http://standards.iso.org/iso/9241/306/ed-2/AS17/AS17LONA.PDF /.PS/1/24, rgb/cmy0/000n/w->rgb_de)  
Información técnica: <http://farbe.li-tu-berlin.de/> o <http://farbe.li-tu-berlin.de/AE.HTM>

TUB matrícula: 20190301-AS17/AS17L0FA.TXT /.PS  
aplicación para la medida de salida de display y de impresión

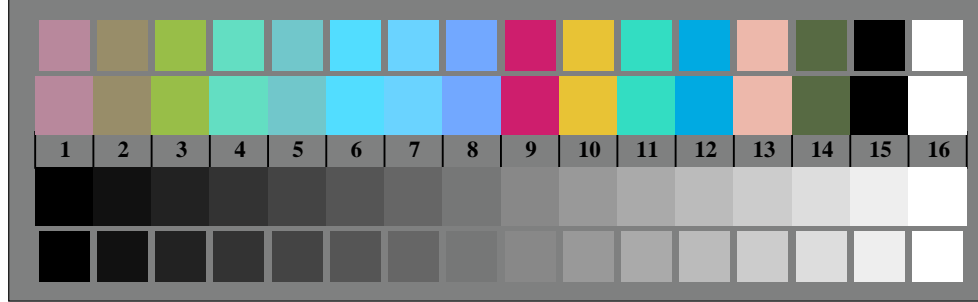
TUB material: code=thadta



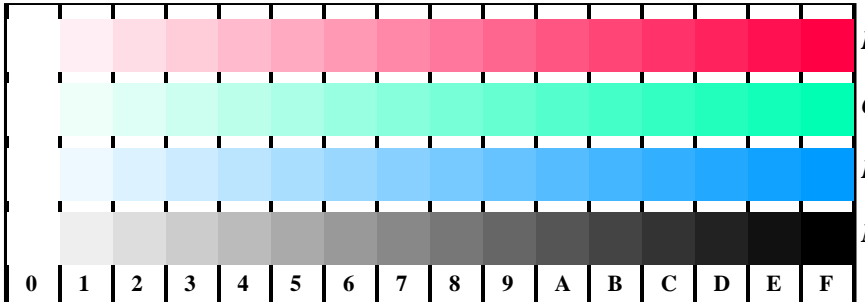
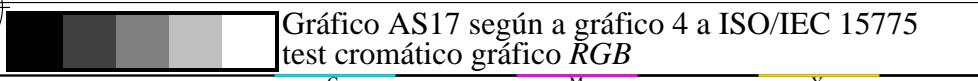
AS170-3, fig. D1Wde: Flower motif, CIE 14 colores del test y 2 + 16 pasos de gris (sf); PS operator: *settransfer, 3 colorimage*



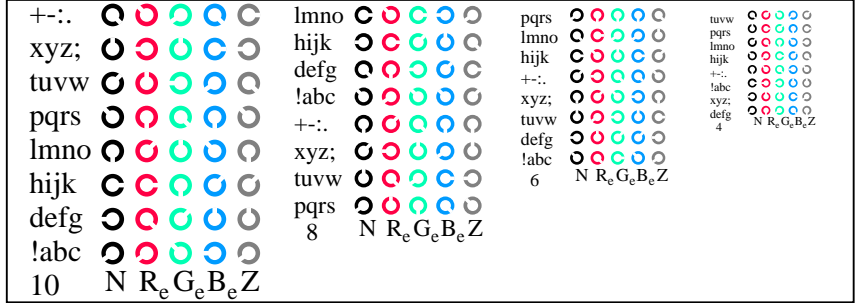
AS170-5, fig. D2Wde: rejillas radial W-Re; W-Ge; W-Be; W-N; PS operator: *rgb->rgb\_de setrgbcolor*



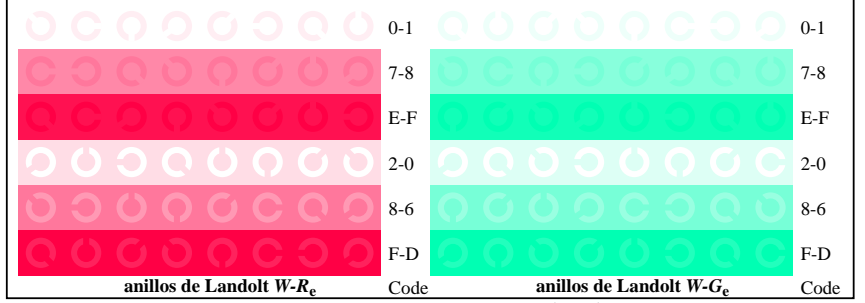
AS170-7, fig. D3Wde: CIE 14 colores del test y 2 + 16 pasos de gris (sf); *rgb/cmy0->rgb\_de setrgbcolor*



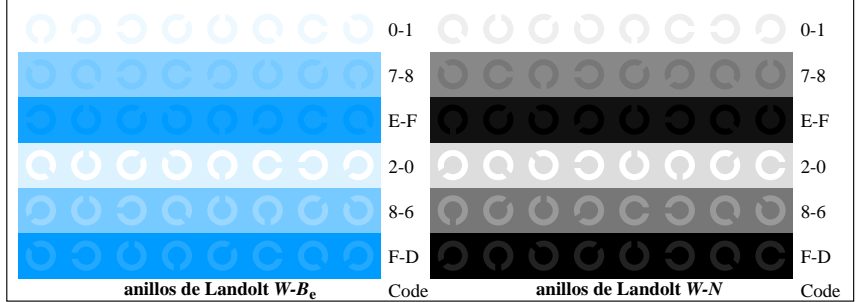
AS171-1, fig. D4Wde: 16 equidistante pasos W-Re; W-Ge; W-Be; W-N; *rgb/cmy0->rgb\_de setrgbcolor*



AS171-3, fig. D5Wde: código y Landolt anillos N; R<sub>e</sub>; G<sub>e</sub>; B<sub>e</sub>; Z; PS operator: *rgb->rgb\_de setrgbcolor*



AS171-5, fig. D6Wde: anillos de Landolt W-Re; W-Ge; PS operator: *rgb->rgb\_de setrgbcolor*



AS171-7, fig. D7Wde: anillos de Landolt W-Be; W-N; PS operator: *rgb->rgb\_de setrgbcolor*

entrada: *rgb/cmy0/000n/w set...*  
salida: *->rgb\_de setrgbcolor*