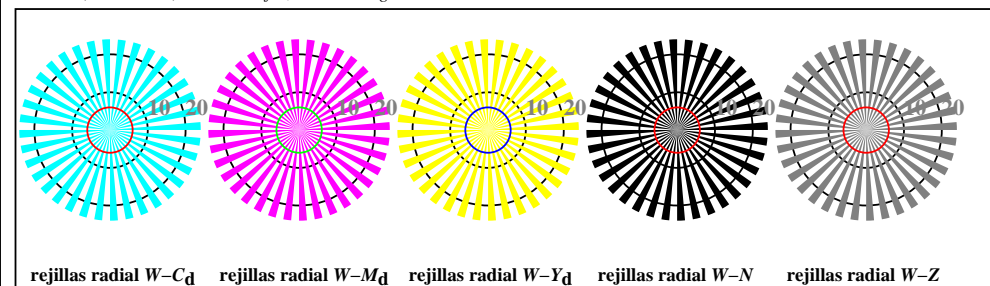




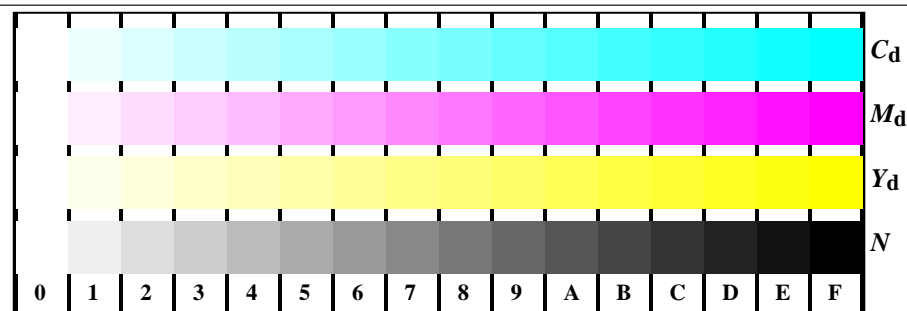
AS270-3, B1W*dd: ; PS settransfer, 3 colorimage



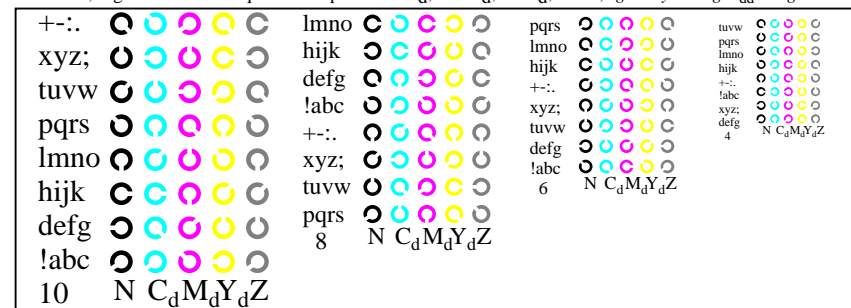
AS270-5, Fig. B2W*dd: rejillas radial W-C_d; W-M_d; W-Y_d; W-N; PS operator rgb->rgb*_{dd} setrgbcolor



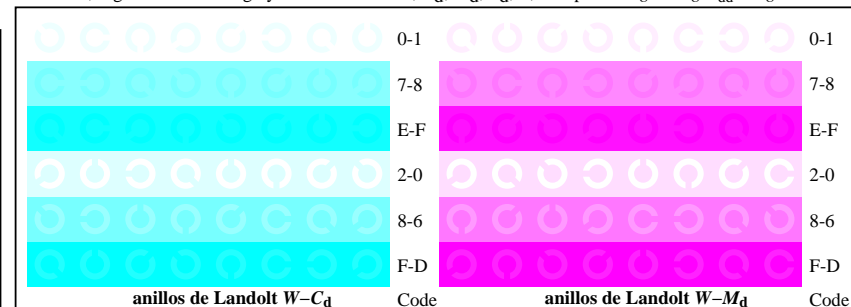
AS270-7, Fig. B3W*dd: CIE 14 colores del test y 2 + 16 pasos de gris (sf); rgb/cmy0->rgb*_{dd} setrgbcolor



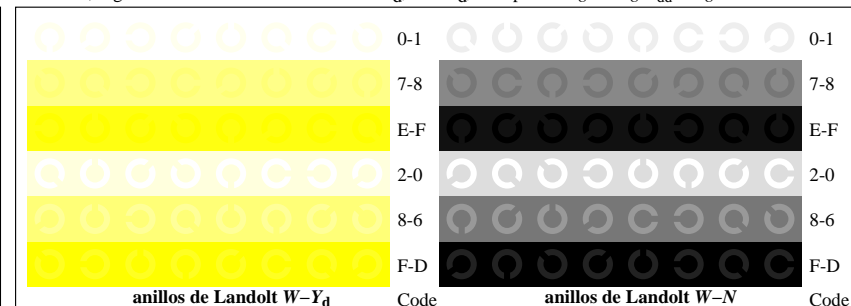
AS271-1, Fig. B4W*dd: 16 equidistante pasos W-C_d; W-M_d; W-Y_d; W-N; rgb/cmy0->rgb*_{dd} setrgbcolor



AS271-3, Fig. B5W*dd: codigo y Landolt anillosN; C_d; M_d; Y_d; Z; PS operator rgb->rgb*_{dd} setrgbcolor



AS271-5, Fig. B6W*dd: anillos de Landolt W-C_d; W-M_d; PS operator rgb->rgb*_{dd} setrgbcolor



AS271-7, Fig. B7W*dd: anillos de Landolt W-Y_d; W-N; PS operator rgb->rgb*_{dd} setrgbcolor