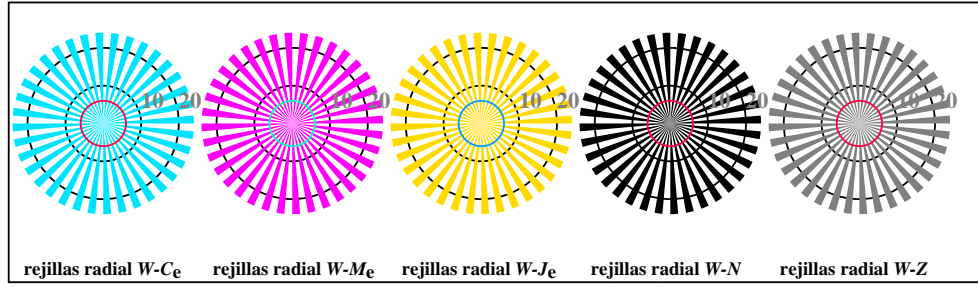


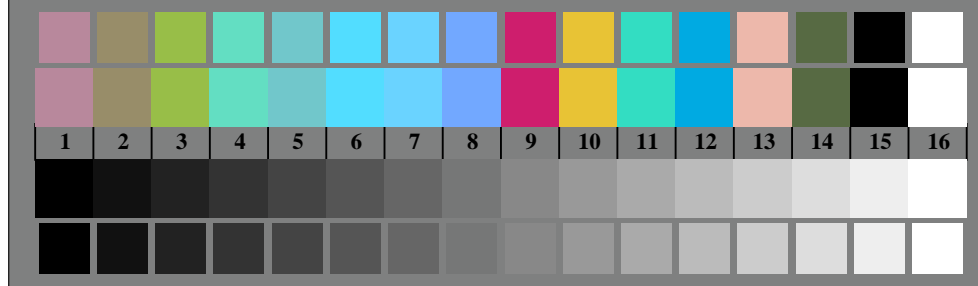
vea archivos semejantes: <http://standards.iso.org/iso/9241/306/ed-2/AS27/AS27.HTM>  
Información técnica: <http://farbe.li.tu-berlin.de/> o <http://farbe.li.tu-berlin.de/AE.HTM>



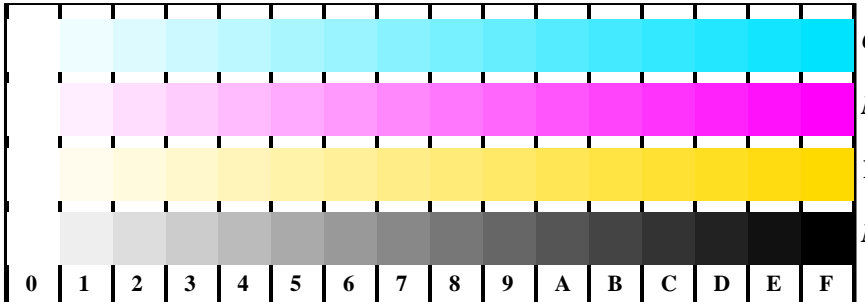
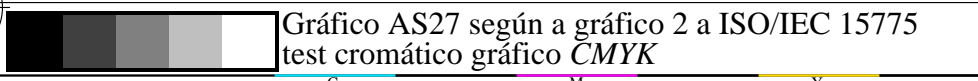
AS270-3, fig. B1Wde: Flower motif, CIE 14 colores del test y 2 + 16 pasos de gris (nf); PS operator: *settransfer, 3 colorimage*



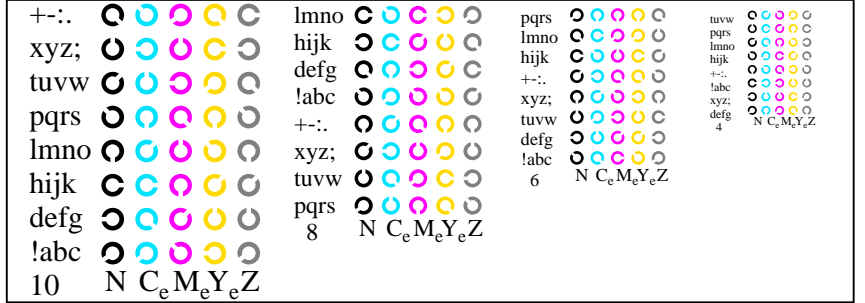
AS270-5, fig. B2Wde: rejillas radial W-Ce; W-Me; W-Je; W-N; PS operator: *rgb->rgb<sub>de</sub> setrgbcolor*



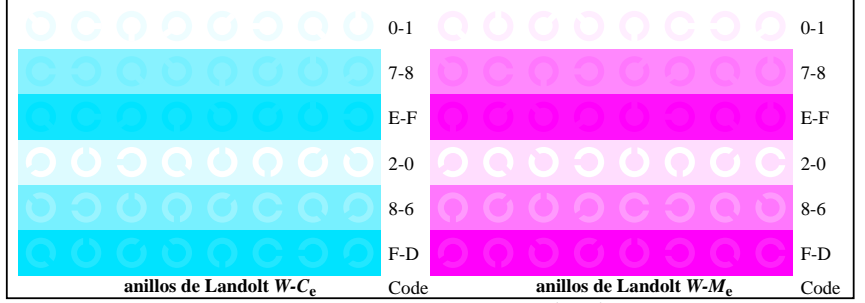
AS270-7, fig. B3Wde: CIE 14 colores del test y 2 + 16 pasos de gris (sf); *rgb/cmy0->rgb<sub>de</sub> setrgbcolor*



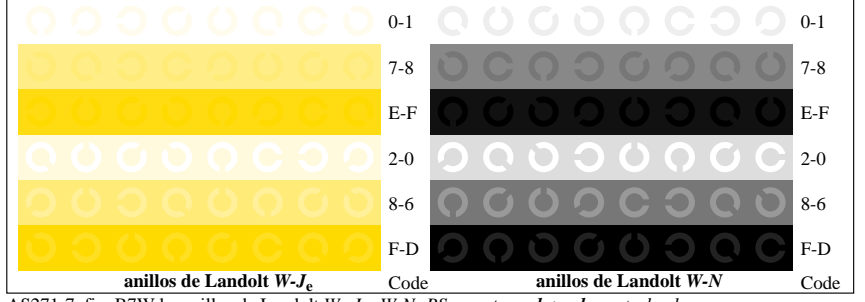
AS271-1, fig. B4Wde: 16 equidistante pasos W-Ce; W-Me; W-Je; W-N; *rgb/cmy0->rgb<sub>de</sub> setrgbcolor*



AS271-3, fig. B5Wde: codigo y Landolt anillos N; Ce; Me; Ye; Z; PS operator: *rgb->rgb<sub>de</sub> setrgbcolor*



AS271-5, fig. B6Wde: anillos de Landolt W-Ce; W-Me; PS operator: *rgb->rgb<sub>de</sub> setrgbcolor*



AS271-7, fig. B7Wde: anillos de Landolt W-Je; W-N; PS operator: *rgb->rgb<sub>de</sub> setrgbcolor*

entrada: *rgb/cmy0/000n/w set...*  
salida: *->rgb<sub>de</sub> setrgbcolor*

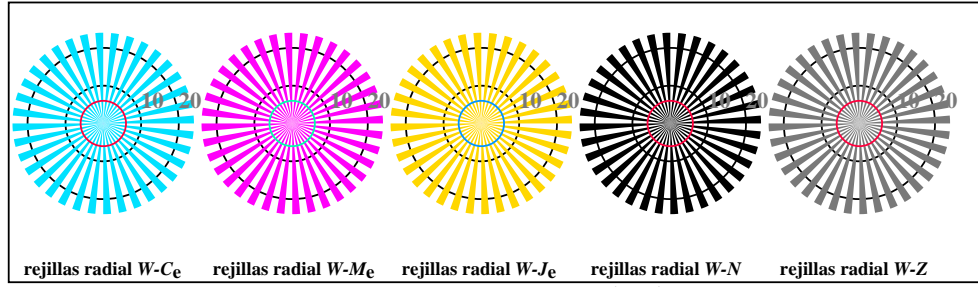
TUB matrícula: 20190301-AS27/AS27L0FA.TXT /.PS  
aplicación para la medida de salida de display y de impresión

TUB material: code=thadta

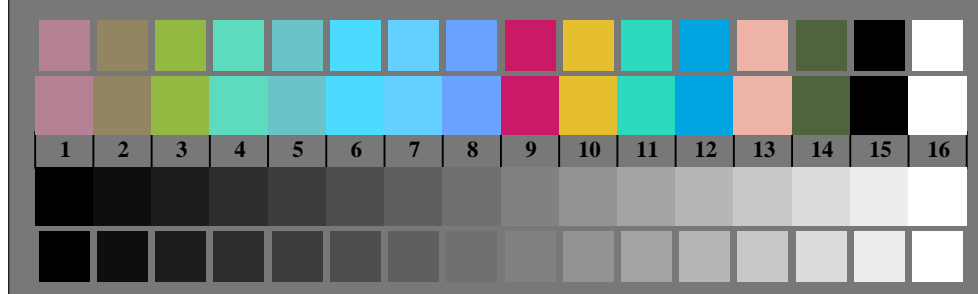
vea archivos semejantes: <http://standards.iso.org/iso/9241/306/ed-2/AS27/AS27.HTM>  
Información técnica: <http://farbe.li.tu-berlin.de/> o <http://farbe.li.tu-berlin.de/AE.HTM>



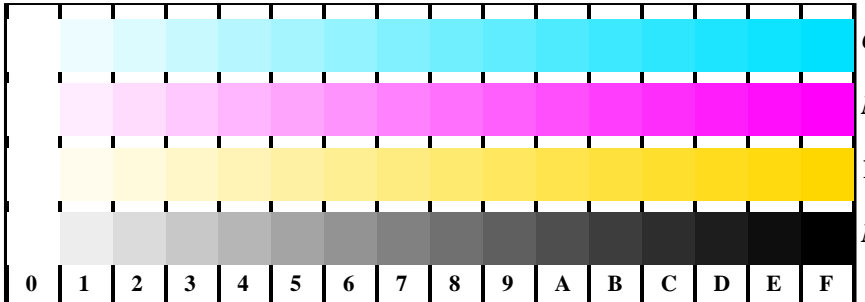
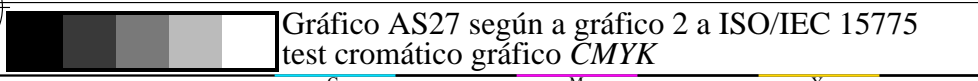
AS270-3, fig. B1Wde: Flower motif, CIE 14 colores del test y 2 + 16 pasos de gris (nf); PS operator: *settransfer, 3 colorimage*



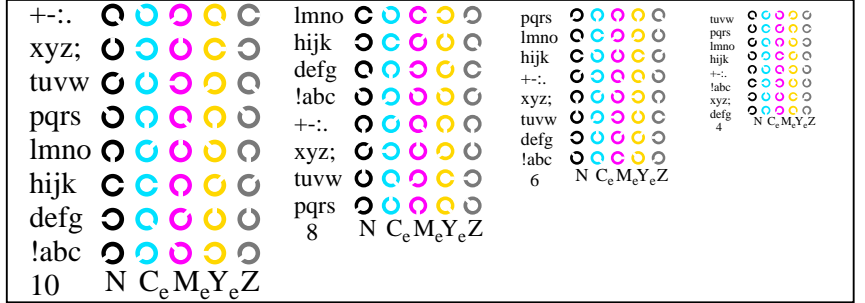
AS270-5, fig. B2Wde: rejillas radial W-Ce; W-Me; W-Je; W-N; PS operator: *rgb->rgb<sub>de</sub> setrgbcolor*



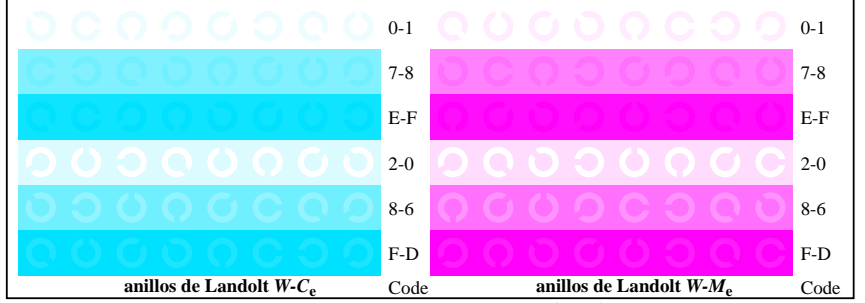
AS270-7, fig. B3Wde: CIE 14 colores del test y 2 + 16 pasos de gris (sf); *rgb/cmy0->rgb<sub>de</sub> setrgbcolor*



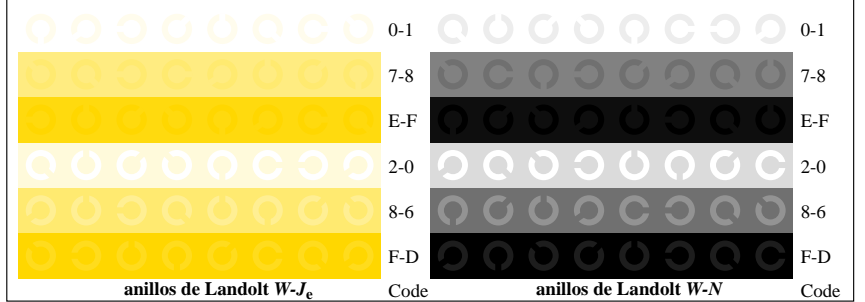
AS271-1, fig. B4Wde: 16 equidistante pasos W-Ce; W-Me; W-Je; W-N; *rgb/cmy0->rgb<sub>de</sub> setrgbcolor*



AS271-3, fig. B5Wde: codigo y Landolt anillos N; Ce; Me; Ye; Z; PS operator: *rgb->rgb<sub>de</sub> setrgbcolor*



AS271-5, fig. B6Wde: anillos de Landolt W-Ce; W-Me; PS operator: *rgb->rgb<sub>de</sub> setrgbcolor*



AS271-7, fig. B7Wde: anillos de Landolt W-Je; W-N; PS operator: *rgb->rgb<sub>de</sub> setrgbcolor*

entrada: *rgb/cmy0/000n/w set...*  
salida: *->rgb<sub>de</sub> setrgbcolor*

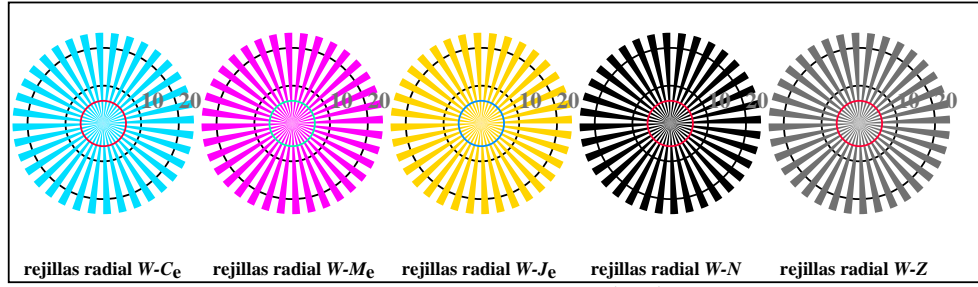
TUB matrícula: 20190301-AS27/AS27L0FA.TXT /.PS  
aplicación para la medida de salida de display y de impresión

TUB material: code=thadta

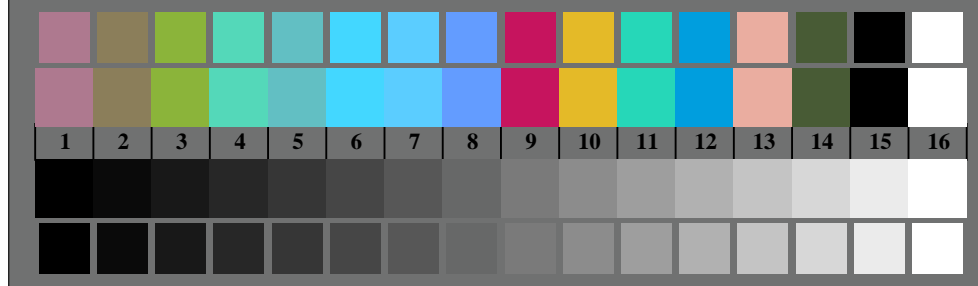
vea archivos semejantes: <http://standards.iso.org/iso/9241/306/ed-2/AS27/AS27.HTM>  
Información técnica: <http://farbe.li.tu-berlin.de/> o <http://farbe.li.tu-berlin.de/AE.HTM>



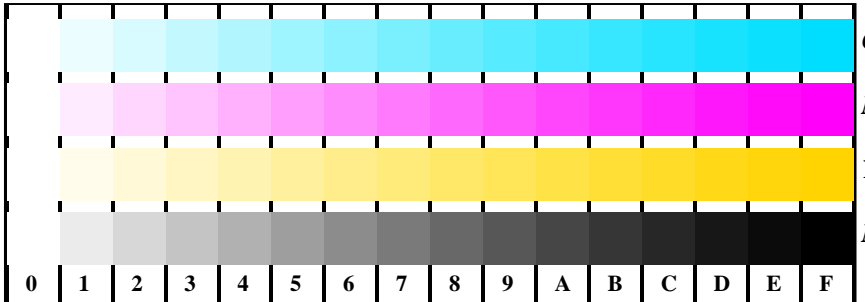
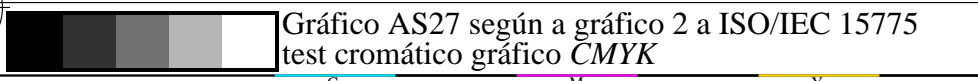
AS270-3, fig. B1Wde: Flower motif, CIE 14 colores del test y 2 + 16 pasos de gris (nf); PS operator: *settransfer, 3 colorimage*



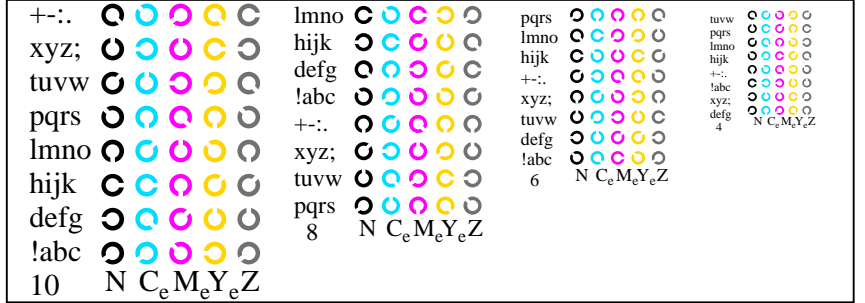
AS270-5, fig. B2Wde: rejillas radial W-Ce; W-Me; W-Je; W-N; PS operator: *rgb->rgb<sub>de</sub> setrgbcolor*



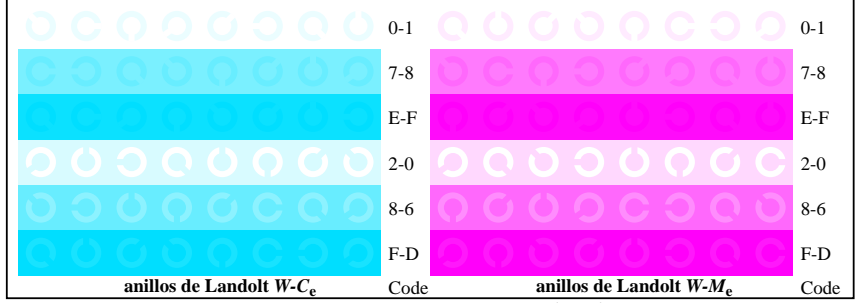
AS270-7, fig. B3Wde: CIE 14 colores del test y 2 + 16 pasos de gris (sf); *rgb/cmy0->rgb<sub>de</sub> setrgbcolor*



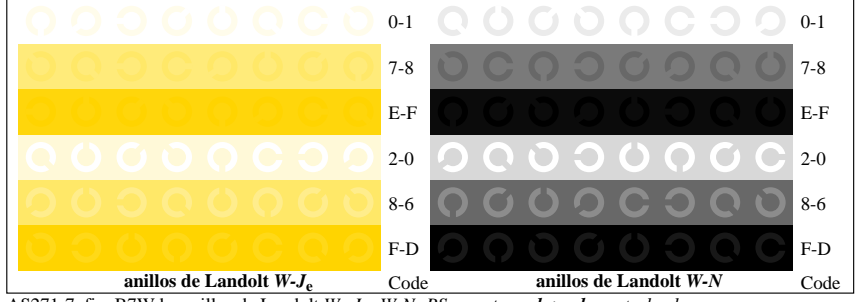
AS271-1, fig. B4Wde: 16 equidistante pasos W-Ce; W-Me; W-Je; W-N; *rgb/cmy0->rgb<sub>de</sub> setrgbcolor*



AS271-3, fig. B5Wde: codigo y Landolt anillos N; Ce; Me; Ye; Z; PS operator: *rgb->rgb<sub>de</sub> setrgbcolor*



AS271-5, fig. B6Wde: anillos de Landolt W-Ce; W-Me; PS operator: *rgb->rgb<sub>de</sub> setrgbcolor*



AS271-7, fig. B7Wde: anillos de Landolt W-Je; W-N; PS operator: *rgb->rgb<sub>de</sub> setrgbcolor*

entrada: *rgb/cmy0/000n/w set...*  
salida: *->rgb<sub>de</sub> setrgbcolor*

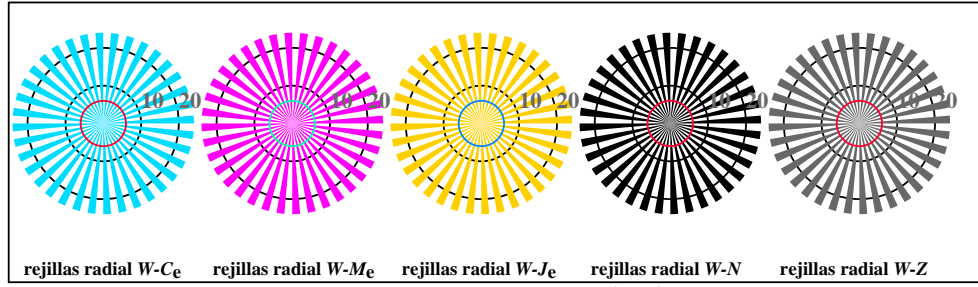
TUB matrícula: 20190301-AS27/AS27L0FA.TXT /.PS  
aplicación para la medida de salida de display y de impresión

TUB material: code=thadta

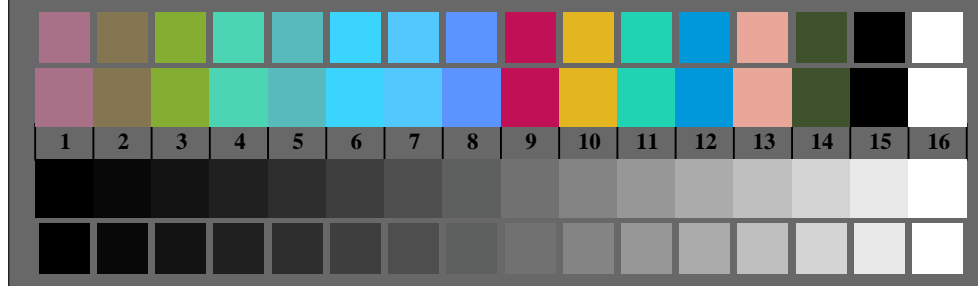
vea archivos semejantes: http://standards.iso.org/iso/9241/306/ed-2/AS27/AS27.HTM  
Información técnica: http://farbe.li-tu-berlin.de/ o http://farbe.li-tu-berlin.de/AE.HTM



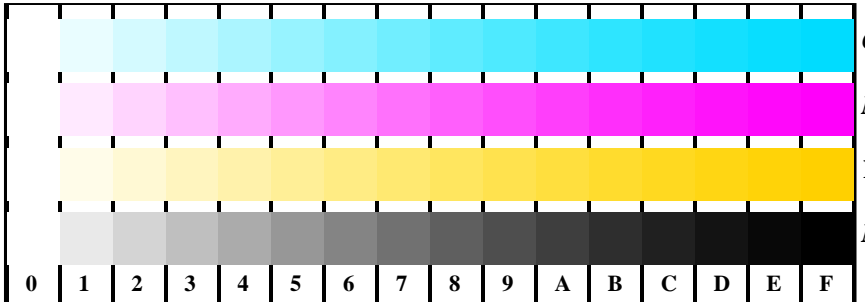
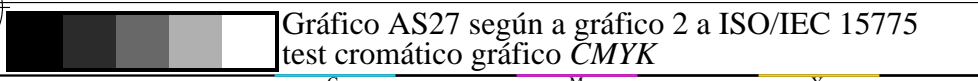
AS270-3, fig. B1Wde: Flower motif, CIE 14 colores del test y 2 + 16 pasos de gris (nf); PS operator: *settransfer, 3 colorimage*



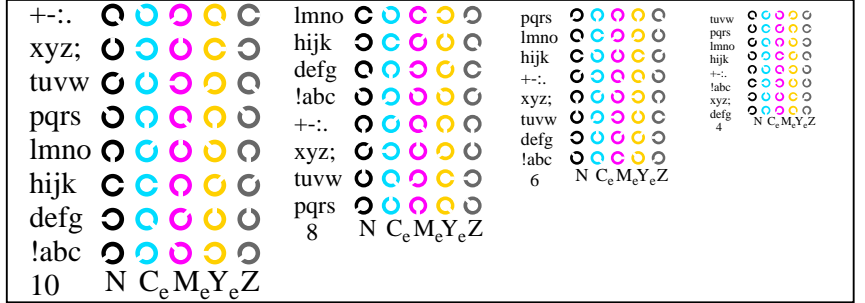
AS270-5, fig. B2Wde: rejillas radial W-Ce; W-Me; W-Je; W-N; PS operator: *rgb->rgb<sub>de</sub> setrgbcolor*



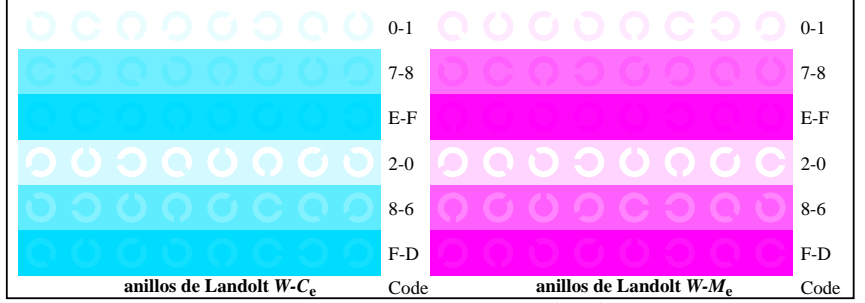
AS270-7, fig. B3Wde: CIE 14 colores del test y 2 + 16 pasos de gris (sf); *rgb/cmy0->rgb<sub>de</sub> setrgbcolor*



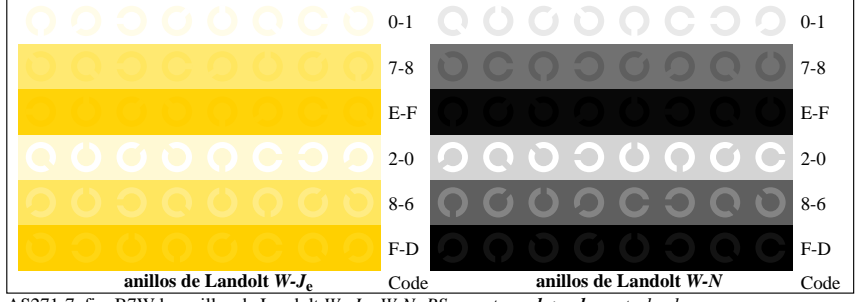
AS271-1, fig. B4Wde: 16 equidistante pasos W-Ce; W-Me; W-Je; W-N; *rgb/cmy0->rgb<sub>de</sub> setrgbcolor*



AS271-3, fig. B5Wde: codigo y Landolt anillos N; Ce; Me; Ye; Z; PS operator: *rgb->rgb<sub>de</sub> setrgbcolor*



AS271-5, fig. B6Wde: anillos de Landolt W-Ce; W-Me; PS operator: *rgb->rgb<sub>de</sub> setrgbcolor*



AS271-7, fig. B7Wde: anillos de Landolt W-Je; W-N; PS operator: *rgb->rgb<sub>de</sub> setrgbcolor*

entrada: *rgb/cmy0/000n/w set...*  
salida: *->rgb<sub>de</sub> setrgbcolor*

TUB matrícula: 20190301-AS27/AS27L0FA.TXT /.PS  
aplicación para la medida de salida de display y de impresión

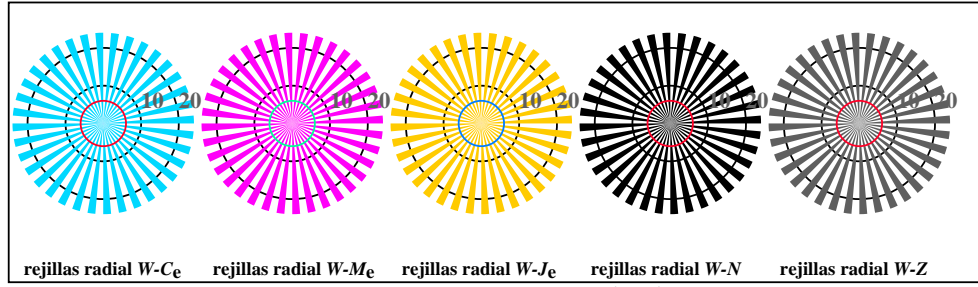
TUB material: code=thadta

vea archivos semejantes: http://standards.iso.org/iso/9241/306/ed-2/AS27/AS27.HTM  
Información técnica: http://farbe.li-tu-berlin.de/ o http://farbe.li-tu-berlin.de/AE.HTM

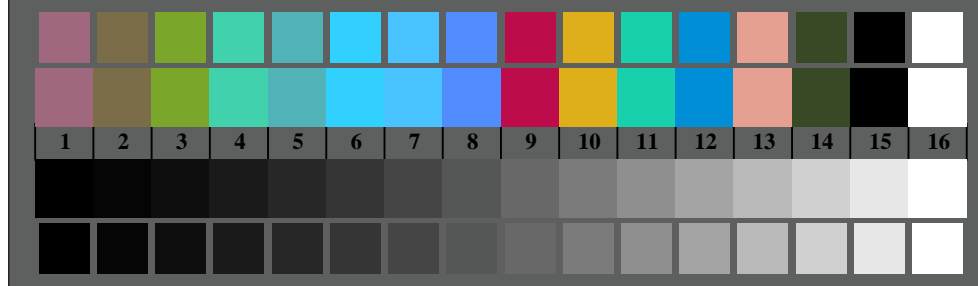
TUB matrícula: 20190301-AS27/AS27L0FA.TXT /.PS  
aplicación para la medida de salida de display y de impresión  
TUB material: code=thadta



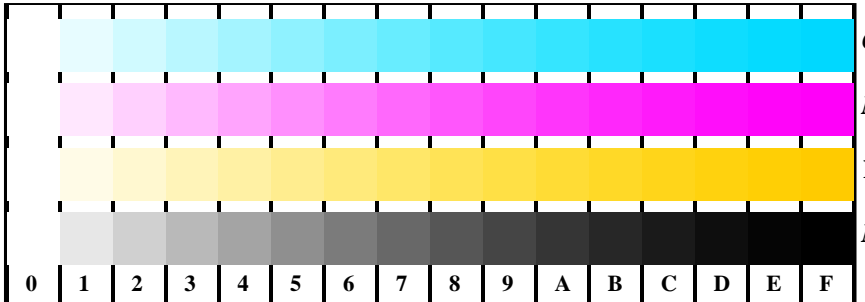
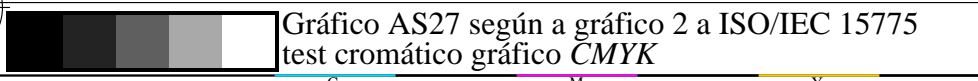
AS270-3, fig. B1Wde: Flower motif, CIE 14 colores del test y 2 + 16 pasos de gris (nf); PS operator: settransfer, 3 colorimage



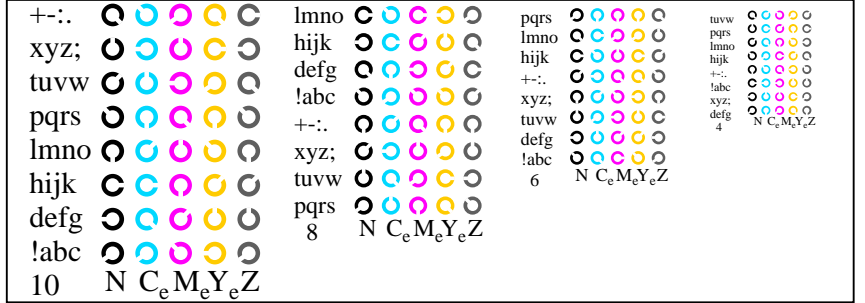
AS270-5, fig. B2Wde: rejillas radial W-Ce; W-Me; W-Je; W-N; PS operator: rgb->rgb\_de setrgbcolor



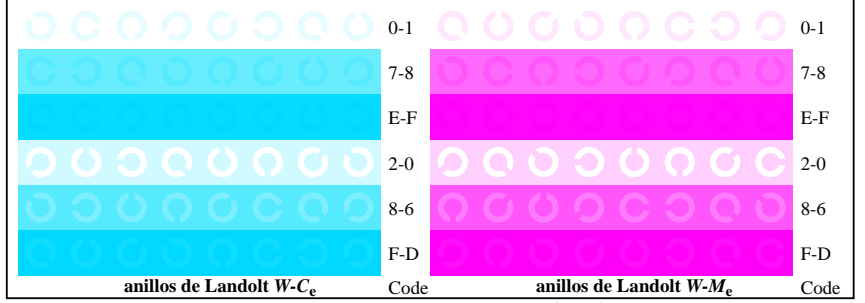
AS270-7, fig. B3Wde: CIE 14 colores del test y 2 + 16 pasos de gris (sf); rgb/cmy0->rgb\_de setrgbcolor



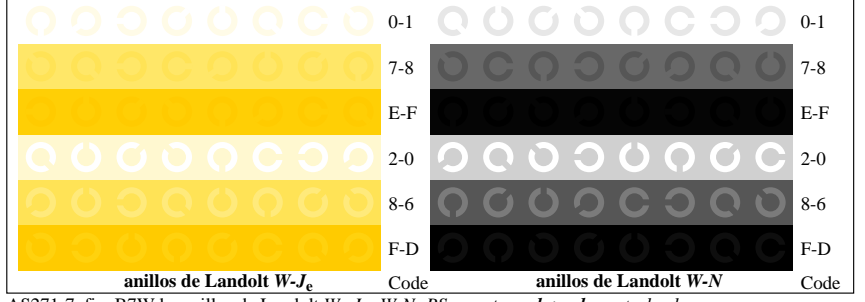
AS271-1, fig. B4Wde: 16 equidistante pasos W-Ce; W-Me; W-Je; W-N; rgb/cmy0->rgb\_de setrgbcolor



AS271-3, fig. B5Wde: codigo y Landolt anillos N; Ce; Me; Ye; Z; PS operator: rgb->rgb\_de setrgbcolor



AS271-5, fig. B6Wde: anillos de Landolt W-Ce; W-Me; PS operator: rgb->rgb\_de setrgbcolor



AS271-7, fig. B7Wde: anillos de Landolt W-Je; W-N; PS operator: rgb->rgb\_de setrgbcolor

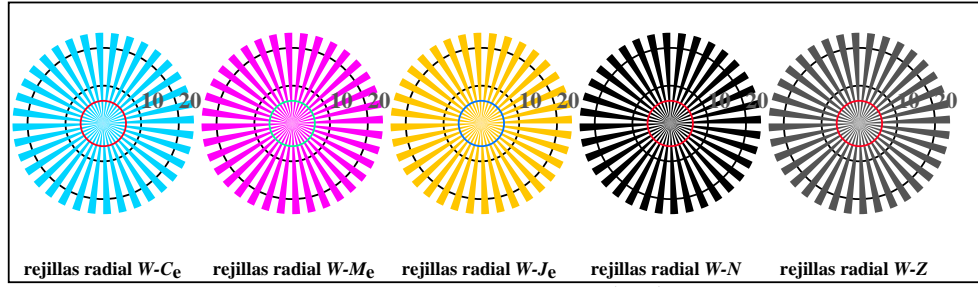
entrada: rgb/cmy0/000n/w set...  
salida: ->rgb\_de setrgbcolor

vea archivos semejantes: <http://standards.iso.org/iso/9241/306/ed-2/AS27/AS27.HTM>  
 Información técnica: <http://farbe.li.tu-berlin.de/> o <http://farbe.li.tu-berlin.de/AE.HTM>

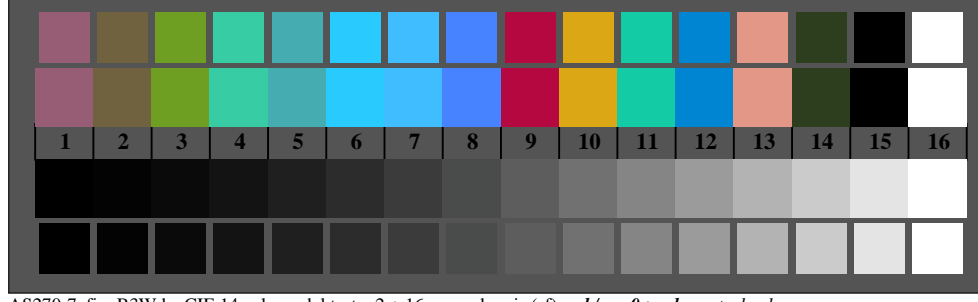
TUB matrícula: 20190301-AS27/AS27L0FA.TXT /.PS  
 aplicación para la medida de salida de display y de impresión  
 TUB material: code=thadta



AS270-3, fig. B1Wde: Flower motif, CIE 14 colores del test y 2 + 16 pasos de gris (nf); PS operator: *settransfer, 3 colorimage*



AS270-5, fig. B2Wde: rejillas radial W-Ce; W-Me; W-Je; W-N; PS operator: *rgb->rgb<sub>de</sub> setrgbcolor*



AS270-7, fig. B3Wde: CIE 14 colores del test y 2 + 16 pasos de gris (sf); *rgb/cmy0->rgb<sub>de</sub> setrgbcolor*

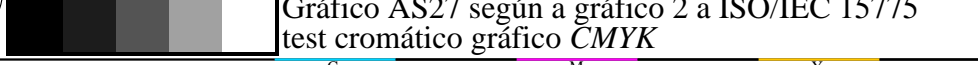
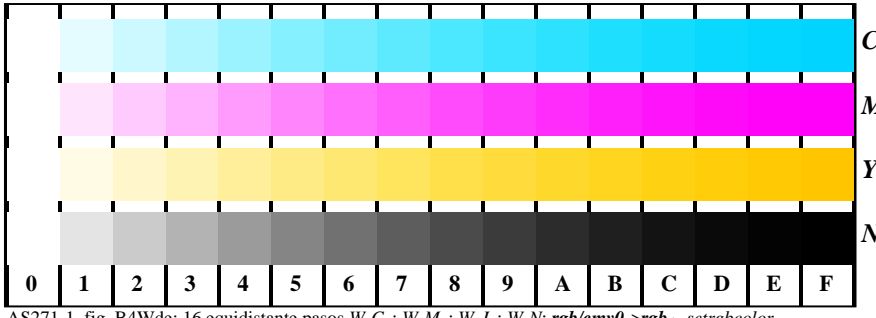
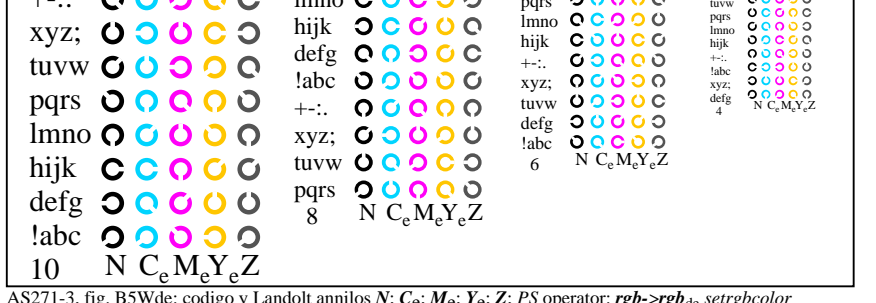


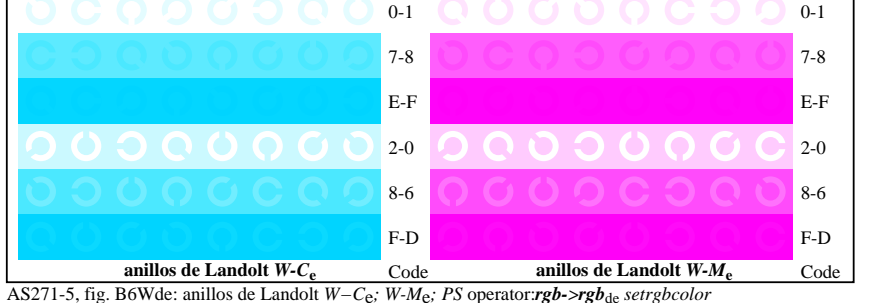
Gráfico AS27 según a gráfico 2 a ISO/IEC 15775  
 test cromático gráfico CMYK



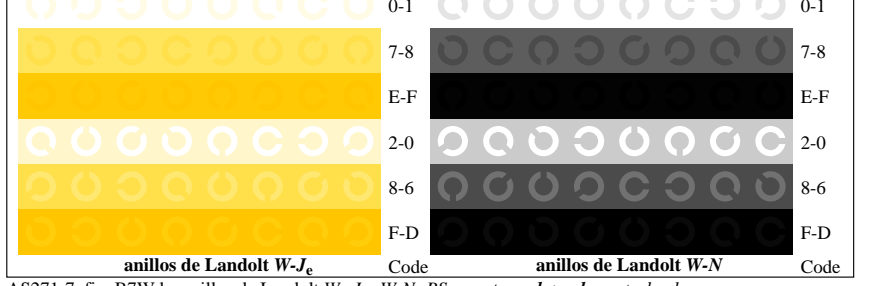
AS271-1, fig. B4Wde: 16 equidistante pasos W-Ce; W-Me; W-Je; W-N; *rgb/cmy0->rgb<sub>de</sub> setrgbcolor*



AS271-3, fig. B5Wde: código y Landolt anillos N; Ce; Me; Ye; Z; PS operator: *rgb->rgb<sub>de</sub> setrgbcolor*



AS271-5, fig. B6Wde: anillos de Landolt W-Ce; W-Me; PS operator: *rgb->rgb<sub>de</sub> setrgbcolor*



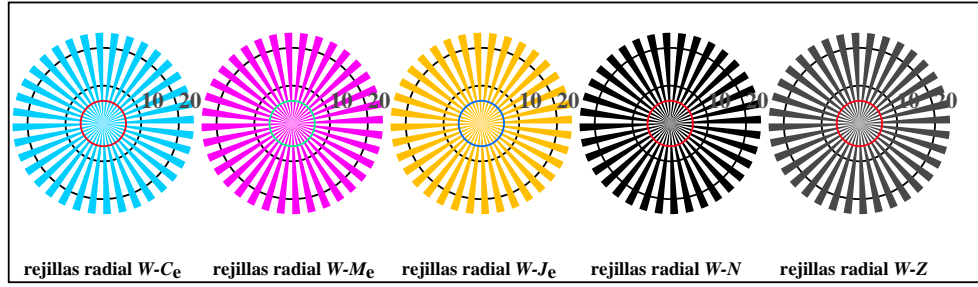
AS271-7, fig. B7Wde: anillos de Landolt W-Je; W-N; PS operator: *rgb->rgb<sub>de</sub> setrgbcolor*

entrada: *rgb/cmy0/000n/w set...*  
 salida: *->rgb<sub>de</sub> setrgbcolor*

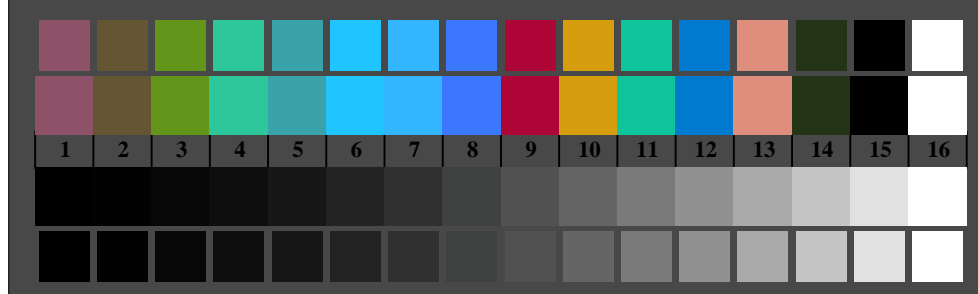
vea archivos semejantes: <http://standards.iso.org/iso/9241/306/ed-2/AS27/AS27.HTM>  
Información técnica: <http://farbe.li.tu-berlin.de/> o <http://farbe.li.tu-berlin.de/AE.HTM>



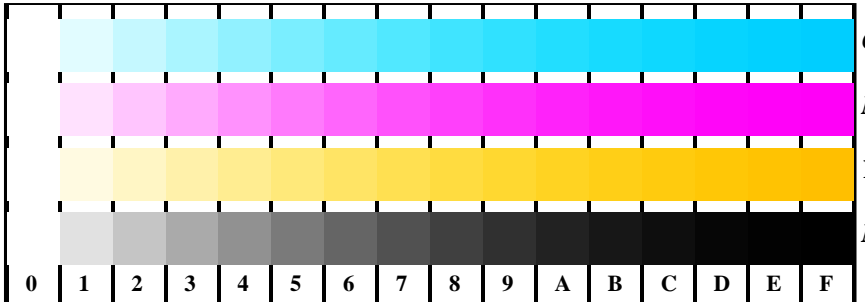
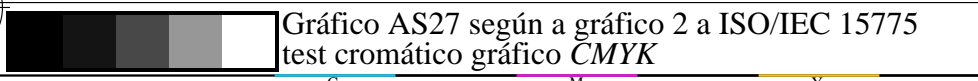
AS270-3, fig. B1Wde: Flower motif, CIE 14 colores del test y 2 + 16 pasos de gris (nf); PS operator: *settransfer, 3 colorimage*



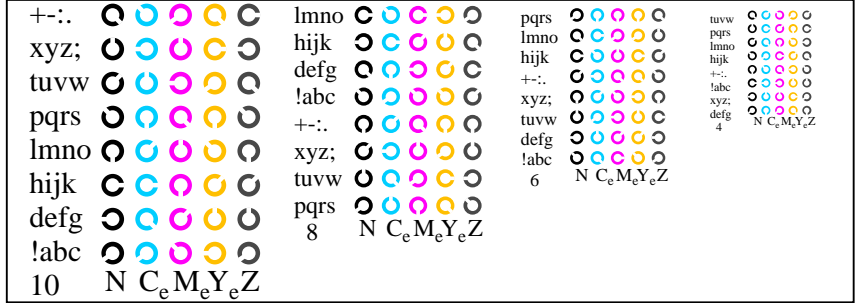
AS270-5, fig. B2Wde: rejillas radial W-Ce; W-Me; W-Je; W-N; PS operator: *rgb->rgb<sub>de</sub> setrgbcolor*



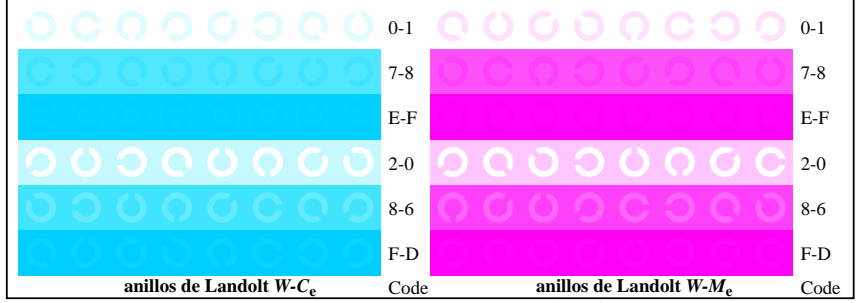
AS270-7, fig. B3Wde: CIE 14 colores del test y 2 + 16 pasos de gris (sf); *rgb/cmy0->rgb<sub>de</sub> setrgbcolor*



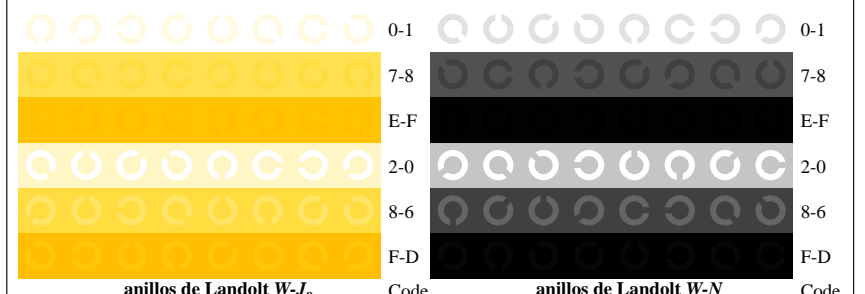
AS271-1, fig. B4Wde: 16 equidistante pasos W-Ce; W-Me; W-Je; W-N; *rgb/cmy0->rgb<sub>de</sub> setrgbcolor*



AS271-3, fig. B5Wde: codigo y Landolt anillos N; Ce; Me; Ye; Z; PS operator: *rgb->rgb<sub>de</sub> setrgbcolor*



AS271-5, fig. B6Wde: anillos de Landolt W-Ce; W-Me; PS operator: *rgb->rgb<sub>de</sub> setrgbcolor*



AS271-7, fig. B7Wde: anillos de Landolt W-Je; W-N; PS operator: *rgb->rgb<sub>de</sub> setrgbcolor*

entrada: *rgb/cmy0/000n/w set...*  
salida: *->rgb<sub>de</sub> setrgbcolor*

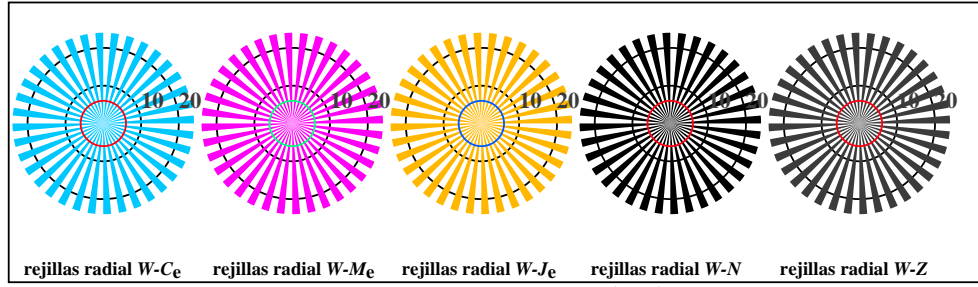
TUB matrícula: 20190301-AS27/AS27L0FA.TXT /.PS  
aplicación para la medida de salida de display y de impresión

TUB material: code=thadta

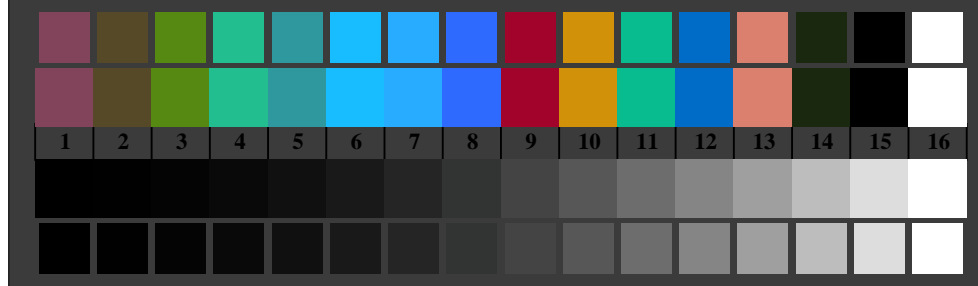
vea archivos semejantes: <http://standards.iso.org/iso/9241/306/ed-2/AS27/AS27.HTM>  
Información técnica: <http://farbe.li.tu-berlin.de/> o <http://farbe.li.tu-berlin.de/AE.HTM>



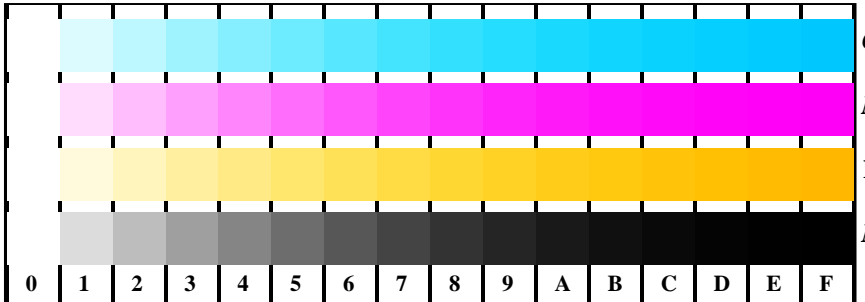
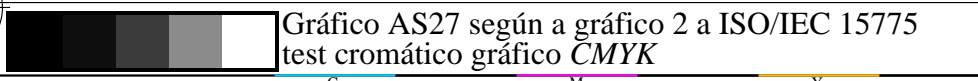
AS270-3, fig. B1Wde: Flower motif, CIE 14 colores del test y 2 + 16 pasos de gris (nf); PS operator: *settransfer, 3 colorimage*



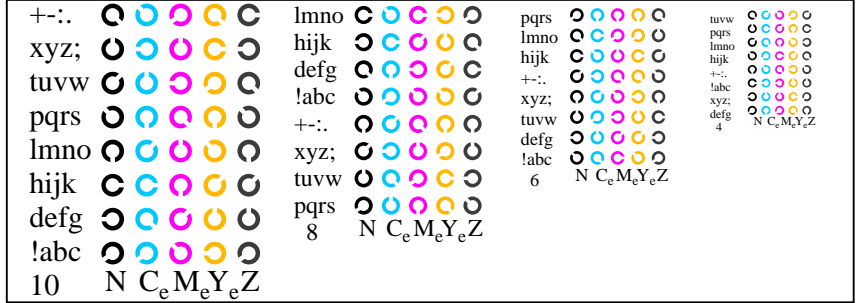
AS270-5, fig. B2Wde: rejillas radial W-Ce; W-Me; W-Je; W-N; PS operator: *rgb->rgb<sub>de</sub> setrgbcolor*



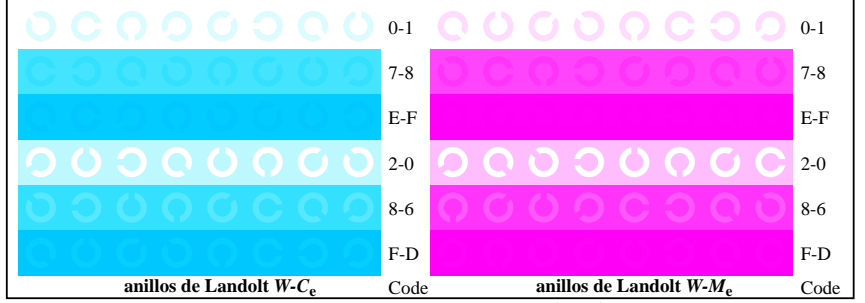
AS270-7, fig. B3Wde: CIE 14 colores del test y 2 + 16 pasos de gris (sf); *rgb/cmy0->rgb<sub>de</sub> setrgbcolor*



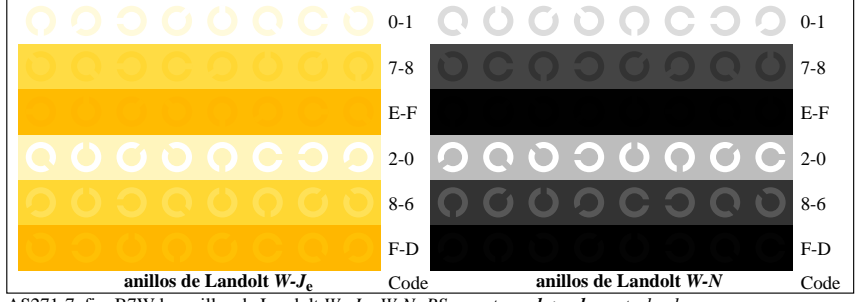
AS271-1, fig. B4Wde: 16 equidistante pasos W-Ce; W-Me; W-Je; W-N; *rgb/cmy0->rgb<sub>de</sub> setrgbcolor*



AS271-3, fig. B5Wde: codigo y Landolt anillos N; Ce; Me; Ye; Z; PS operator: *rgb->rgb<sub>de</sub> setrgbcolor*



AS271-5, fig. B6Wde: anillos de Landolt W-Ce; W-Me; PS operator: *rgb->rgb<sub>de</sub> setrgbcolor*



AS271-7, fig. B7Wde: anillos de Landolt W-Je; W-N; PS operator: *rgb->rgb<sub>de</sub> setrgbcolor*

entrada: *rgb/cmy0/000n/w set...*  
salida: *->rgb<sub>de</sub> setrgbcolor*

TUB matrícula: 20190301-AS27/AS27L0FA.TXT /.PS  
aplicación para la medida de salida de display y de impresión

TUB material: code=thadta