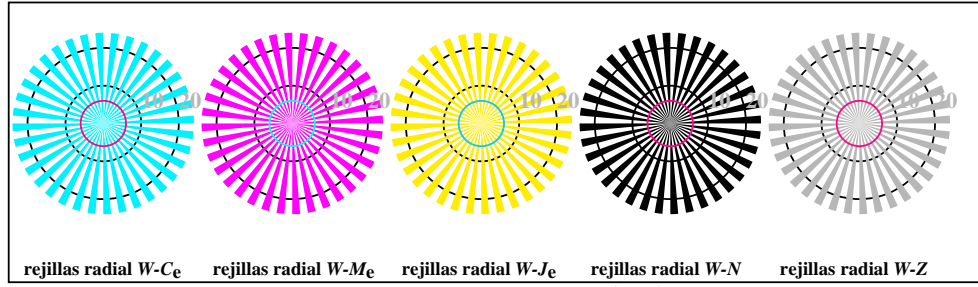


vea archivos semejantes: http://standards.iso.org/iso/9241/306/ed-2/AS27/AS27L0NA.PDF /.PS22/24, rgb/cmy0/000n/w->rgb_de
Información técnica: <http://farbe.li-tu-berlin.de/> o <http://farbe.li-tu-berlin.de/AE.HTM>

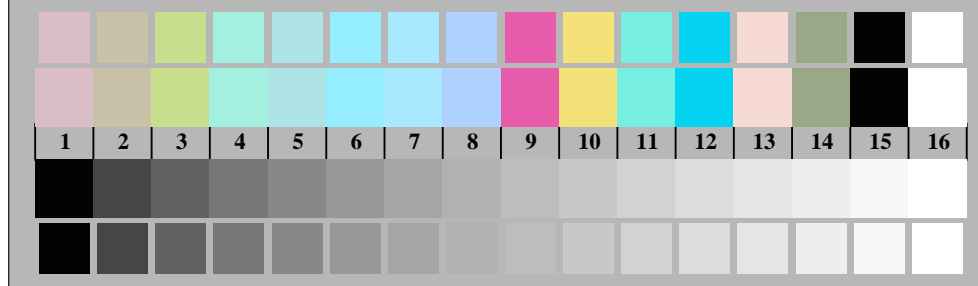
TUB matrícula: 20190301-AS27/AS27L0FA.TXT /.PS
aplicación para la medida de salida de display y de impresión
TUB material: code=thadta



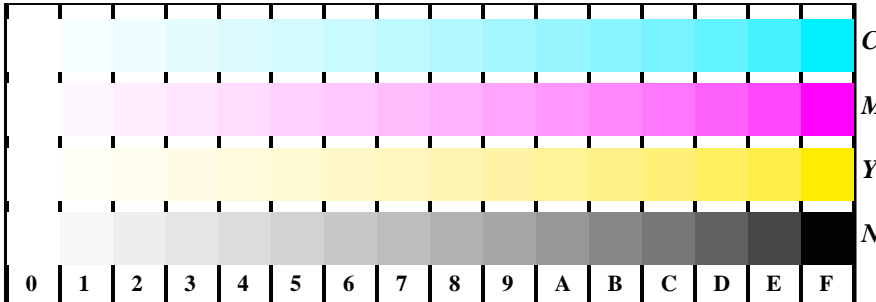
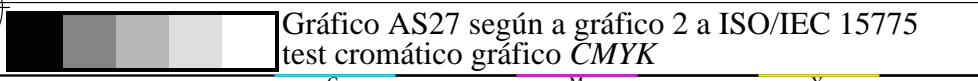
AS270-3, fig. B1Wde: Flower motif, CIE 14 colores del test y 2 + 16 pasos de gris (nf); PS operator: *settransfer, 3 colorimage*



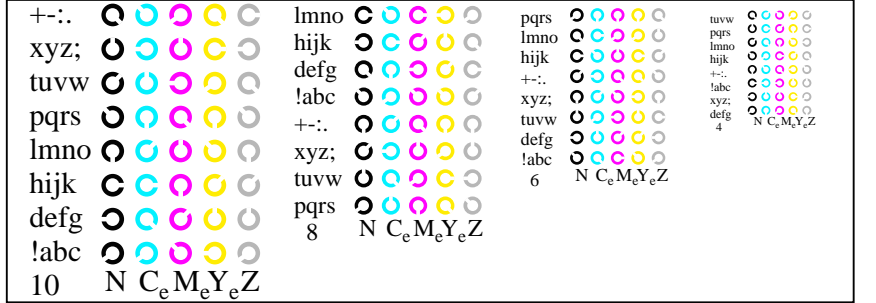
AS270-5, fig. B2Wde: rejillas radial W-Ce; W-Me; W-Je; W-N; PS operator: *rgb->rgb_de setrgbcolor*



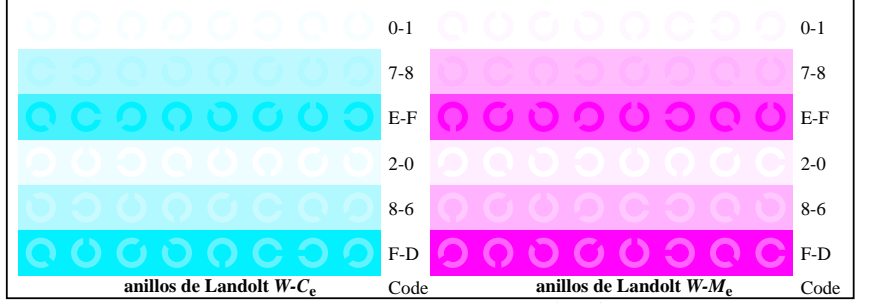
AS270-7, fig. B3Wde: CIE 14 colores del test y 2 + 16 pasos de gris (sf); *rgb/cmy0->rgb_de setrgbcolor*



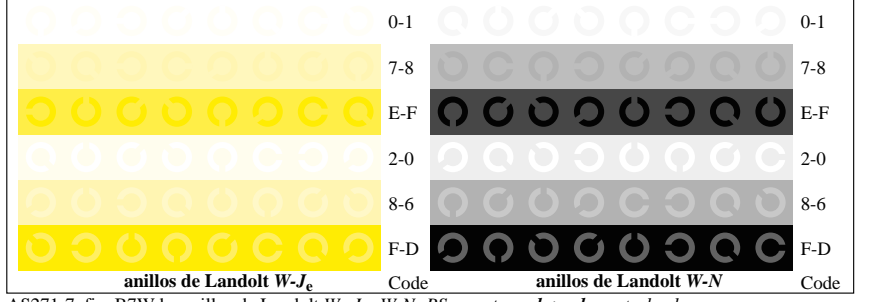
AS271-1, fig. B4Wde: 16 equidistante pasos W-Ce; W-Me; W-Je; W-N; *rgb/cmy0->rgb_de setrgbcolor*



AS271-3, fig. B5Wde: codigo y Landolt anillos N; Ce; Me; Ye; Z; PS operator: *rgb->rgb_de setrgbcolor*



AS271-5, fig. B6Wde: anillos de Landolt W-Ce; W-Me; PS operator: *rgb->rgb_de setrgbcolor*



AS271-7, fig. B7Wde: anillos de Landolt W-Je; W-N; PS operator: *rgb->rgb_de setrgbcolor*

entrada: *rgb/cmy0/000n/w set...*
salida: *->rgb_de setrgbcolor*