

The visual 16 step spacing depends on hardware, software, and environment, for example on screen reflections of ambient light

computer display,
for example LCD

and/or external display,
for example VGA

prepare 8 gamma values
2,40, 2,22, ..., 1,32, 1,14
for computer display output
in computer operating system

prepare 8 gamma values
1,75, 2,00, ..., 3,25, 3,50
for external display output
in computer operating system



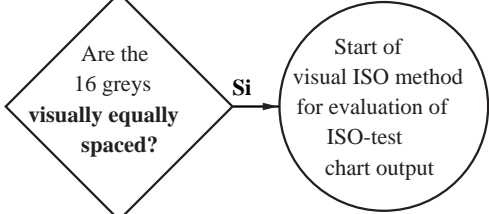
Use the achromatic file which produces one page:
http://farbe.li.tu-berlin/AS06/AS06F0PX_CY8_1.PDF
or use a chromatic file with an image:
http://farbe.li.tu-berlin/AS17/AS17F0PX_CY8_1.PDF

computer display

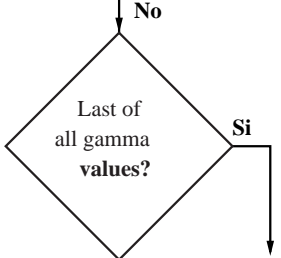
and/or external display

Use start gamma value **2,4**
or next gamma value
2,22, 2,04, ..., 1,32, 1,14

Use start gamma value **1,75**
or next gamma value
2,00, 2,25, ..., 3,25, 3,50



Start of visual ISO method for evaluation of ISO-test chart output



Stop: test failure

Try method with 8 increasing gamma values:
2,40, 2,58, 2,76, 2,94, 3,12, 3,30, ...
instead of 8 decreasing gamma values 2,40, 2,22, ...