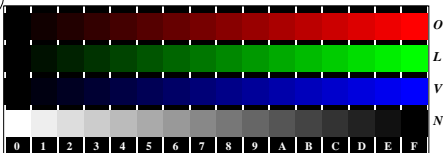
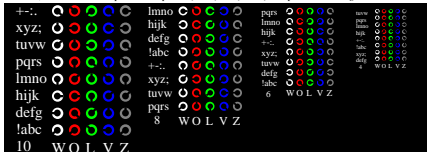


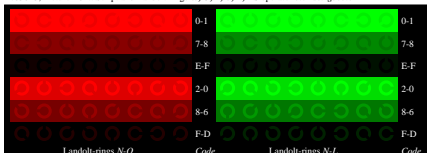
See for similar files: <http://www.ps.bam.de/Ee03/>; www.ps.bam.de/Ee03/
 Technical information: http://www.ps.bam.de/Version_2.1_io-1.1_ColSpX-0



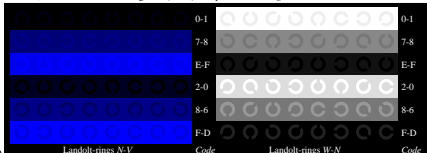
Ee030-1, Picture D4N: 16 equidistant steps N-O, N-L, N-V, W-N; PS operator *olv* setrgbcolor*



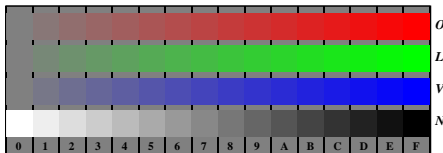
Ee030-3, Picture D5N: Script and Landolt-rings W, O, L, V, Z; PS operator *olv* setrgbcolor*



Ee030-5, Picture D6N: Landolt-rings N-O, N-L; PS operator *olv* setrgbcolor*



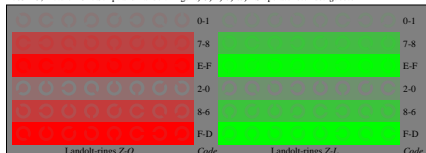
Ee030-7, Picture D7N: Landolt-rings N-V, W-N; PS operator *olv* setrgbcolor*



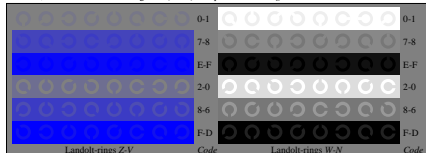
Ee031-1, Picture D4Z: 16 equidistant steps Z-O, Z-L, Z-V, W-N; PS operator *olv* setrgbcolor*



Ee031-3, Picture D5Z: Script and Landolt-rings N, O, L, V, W; PS operator *olv* setrgbcolor*



Ee031-5, Picture D6Z: Landolt-rings Z-O, Z-L; PS operator *olv* setrgbcolor*



Ee031-7, Picture D7Z: Landolt-rings Z-V, W-N; PS operator *olv* setrgbcolor*

Ee03: Test chart of ISO/IEC 15775 and ISO/IEC TR 24705
 Fig. D4 to D7 similar ISO/IEC-test chart 4, *olv** interpretation

input: *rgb->olv* setrgbcolor*
 output: no change compared to input

BAM registration: 20080901-Ee03/L03E00N1.PS/.TXT
 application for evaluation and measurement of printer or monitor systems

BAM material: code=ha4ta