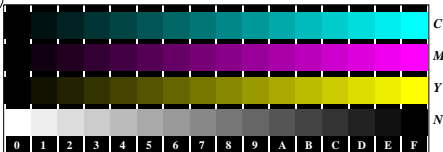


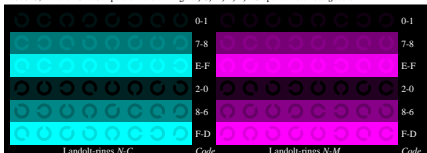
See for similar files: <http://www.ps.bam.de/Ee05/>; [www.ps.bam.de/Ee05/](http://www.ps.bam.de/Ee05/)  
 Technical information: <http://www.ps.bam.de> Version 2.1, io=1.1, ColSp=0



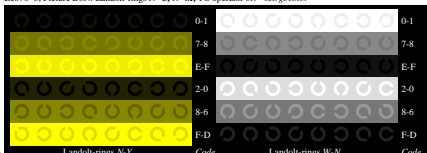
Ee070-1, Picture B4N: 16 equidistant steps N-C, N-M, N-Y, W-N; PS operator olv\* setrgbcolor



Ee070-3, Picture B5N: Script and Landolt-rings W, C, M, Y, Z; PS operator olv\* setrgbcolor

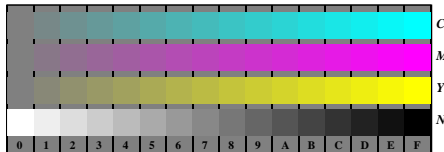


Ee070-5, Picture B6N: Landolt-rings N-C, N-M; PS operator olv\* setrgbcolor



Ee070-7, Picture B7N: Landolt-rings N-Y, W-N; PS operator olv\* setrgbcolor

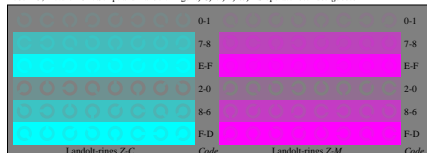
Ee05; Test chart of ISO/IEC 15775 and ISO/IEC TR 24705  
 Fig. B4 to B7 similar ISO/IEC-test chart 2, olv\* interpretation



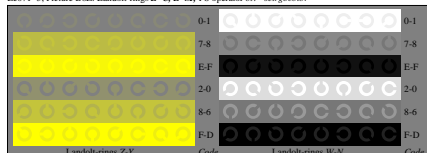
Ee071-1, Picture B4Z: 16 equidistant steps Z-C, Z-M, Z-Y, W-N; PS operator olv\* setrgbcolor



Ee071-3, Picture B5Z: Script and Landolt-rings N, C, M, Y, W; PS operator olv\* setrgbcolor



Ee071-5, Picture B6Z: Landolt-rings Z-C, Z-M; PS operator olv\* setrgbcolor



Ee071-7, Picture B7Z: Landolt-rings Z-Y, W-N; PS operator olv\* setrgbcolor

input: rgb->olv\* setrgbcolor  
 output: no change compared to input

BAM registration: 20080901-Ee05/L05E00N1.PS/.TXT  
 application for evaluation and measurement of printer or monitor systems

BAM material: code=ha4ta