

www.ps.hm.de/E08/UL/L08R0N/PS/ PDF, Page 3/6, transfer and output
N: No Output Linearization (OL) data in File (F), Startup (S) or Device (D), Separation: c n

BAM registration: 20080901-E08/UL/L08R0N/PS/ JHP
application for evaluation and measurement of printer or monitor systems

BAM internal: code:hdlnh

Fig. B1 to B7 similar ISO/IEC-Test chart 2, *oh*/rgb**-interpretation: output: *oh*/rgb**-*cmvnt**-*scrnyk**

Fig. B8 to B16 similar ISO/IEC-Test chart 4, *oh*/rgb**-interpretation: output: *oh*/rgb**-*cmvnt**-*scrnyk**

www.ps.hm.de/E08/UL/L08R0N/PS/ PDF, Page 3/6, transfer and output
N: No Output Linearization (OL) data in File (F), Startup (S) or Device (D), Separation: c n

BAM registration: 20080901-E08/UL/L08R0N/PS/ JHP
application for evaluation and measurement of printer or monitor systems

BAM internal: code:hdlnh

Fig. B1 to B7 similar ISO/IEC-Test chart 2, *oh*/rgb**-interpretation: output: *oh*/rgb**-*cmvnt**-*scrnyk**

Fig. B8 to B16 similar ISO/IEC-Test chart 4, *oh*/rgb**-interpretation: output: *oh*/rgb**-*cmvnt**-*scrnyk**

www.ps.hm.de/E08/UL/L08R0N/PS/ PDF, Page 3/6, transfer and output
N: No Output Linearization (OL) data in File (F), Startup (S) or Device (D), Separation: c n

BAM registration: 20080901-E08/UL/L08R0N/PS/ JHP
application for evaluation and measurement of printer or monitor systems

BAM internal: code:hdlnh

Fig. B1 to B7 similar ISO/IEC-Test chart 2, *oh*/rgb**-interpretation: output: *oh*/rgb**-*cmvnt**-*scrnyk**

Fig. D1 to D7 similar ISO/IEC-Test chart 4, *oh*/rgb**-interpretation: output: *oh*/rgb**-*cmvnt**-*scrnyk**

www.ps.hm.de/E08/UL/L08R0N/PS/ PDF, Page 3/6, transfer and output
N: No Output Linearization (OL) data in File (F), Startup (S) or Device (D), Separation: c n

BAM registration: 20080901-E08/UL/L08R0N/PS/ JHP
application for evaluation and measurement of printer or monitor systems

BAM internal: code:hdlnh

Fig. D4 to D7 similar ISO/IEC-Test chart 2, *oh*/rgb**-interpretation: output: *oh*/rgb**-*cmvnt**-*scrnyk**

www.ps.hm.de/E08/UL/L08R0N/PS/ PDF, Page 3/6, transfer and output
N: No Output Linearization (OL) data in File (F), Startup (S) or Device (D), Separation: c n

BAM registration: 20080901-E08/UL/L08R0N/PS/ JHP
application for evaluation and measurement of printer or monitor systems

BAM internal: code:hdlnh

Fig. D4 to D7 similar ISO/IEC-Test chart 2, *oh*/rgb**-interpretation: output: *oh*/rgb**-*cmvnt**-*scrnyk**

www.ps.hm.de/E08/UL/L08R0N/PS/ PDF, Page 3/6, transfer and output
N: No Output Linearization (OL) data in File (F), Startup (S) or Device (D), Separation: c n

BAM registration: 20080901-E08/UL/L08R0N/PS/ JHP
application for evaluation and measurement of printer or monitor systems

BAM internal: code:hdlnh

Fig. B1 to B7 similar ISO/IEC-Test chart 2, *oh*/rgb**-interpretation: output: *oh*/rgb**-*cmvnt**-*scrnyk**

www.ps.hm.de/E08/UL/L08R0N/PS/ PDF, Page 3/6, transfer and output
N: No Output Linearization (OL) data in File (F), Startup (S) or Device (D), Separation: c n

BAM registration: 20080901-E08/UL/L08R0N/PS/ JHP
application for evaluation and measurement of printer or monitor systems

BAM internal: code:hdlnh

Fig. B4 to B7 similar ISO/IEC-Test chart 2, *oh*/rgb**-interpretation: output: *oh*/rgb**-*cmvnt**-*scrnyk**

www.ps.hm.de/E08/UL/L08R0N/PS/ PDF, Page 3/6, transfer and output
N: No Output Linearization (OL) data in File (F), Startup (S) or Device (D), Separation: c n

BAM registration: 20080901-E08/UL/L08R0N/PS/ JHP
application for evaluation and measurement of printer or monitor systems

BAM internal: code:hdlnh

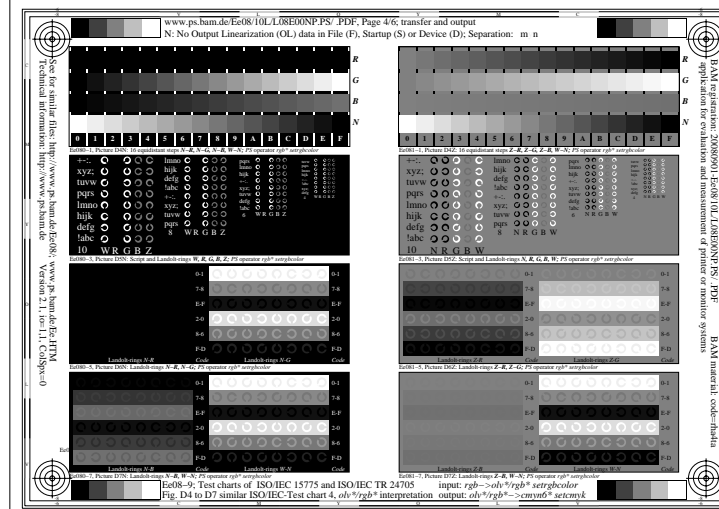
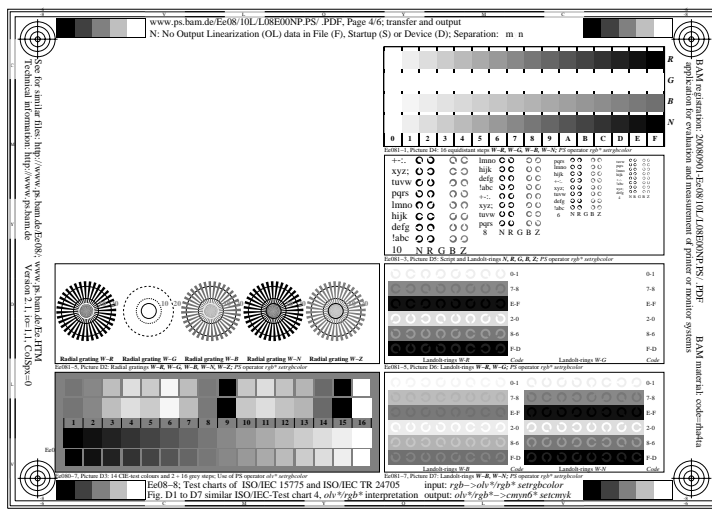
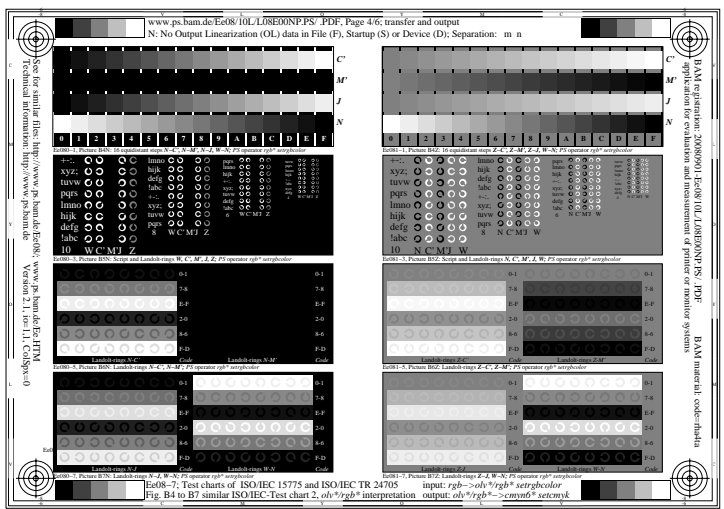
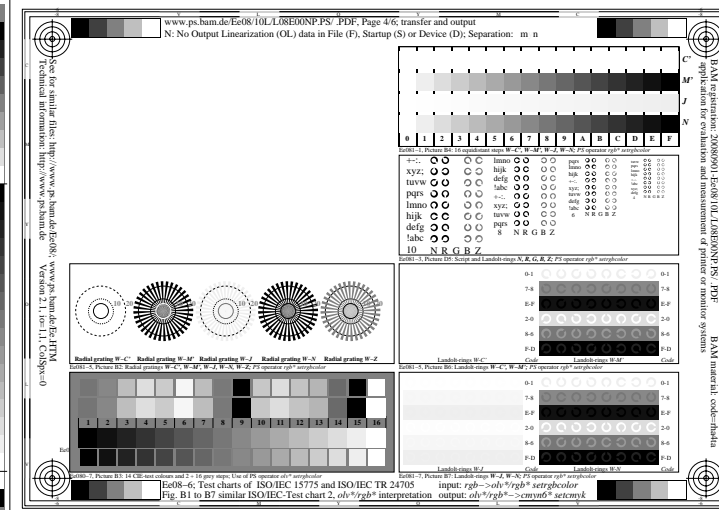
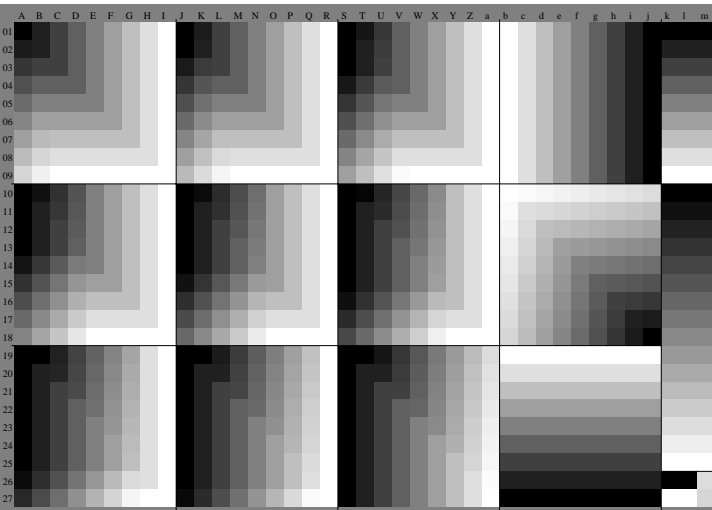
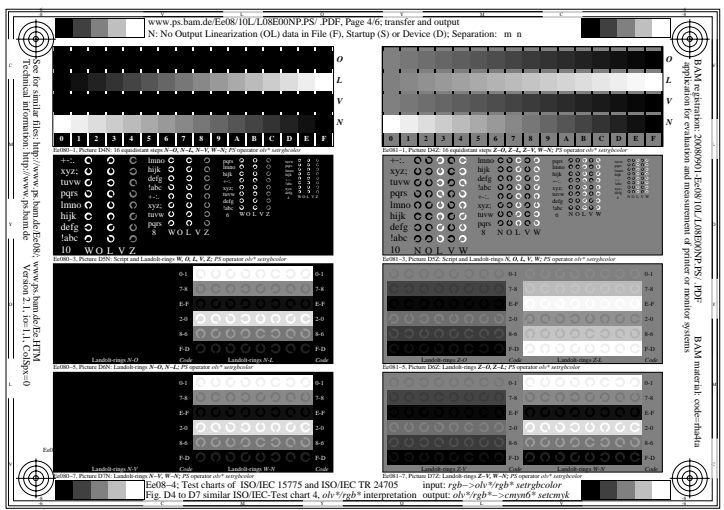
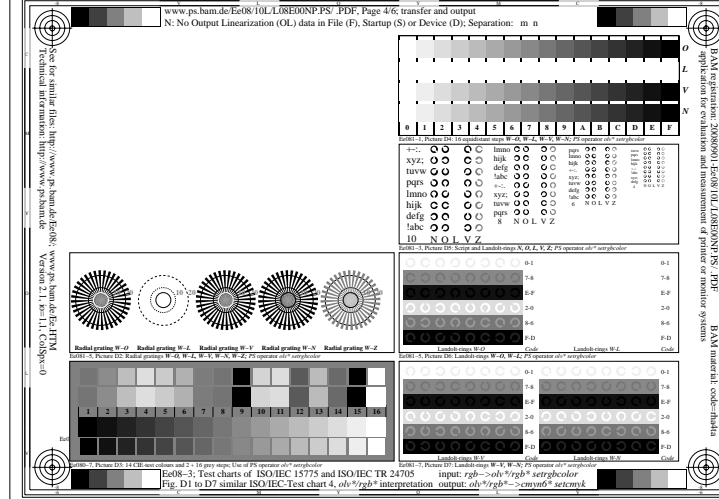
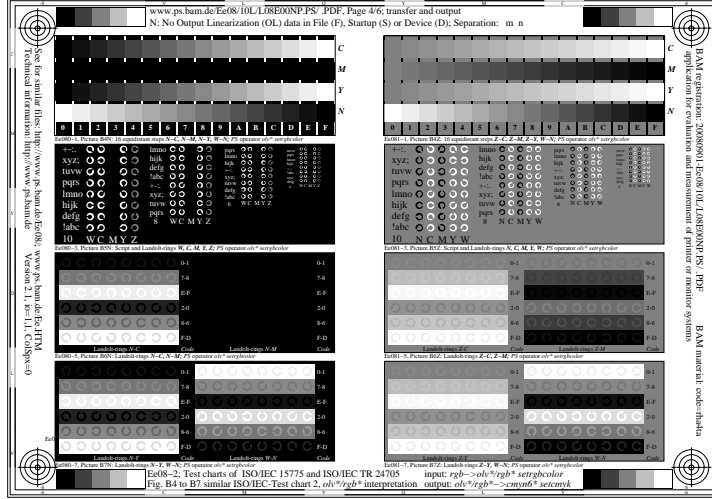
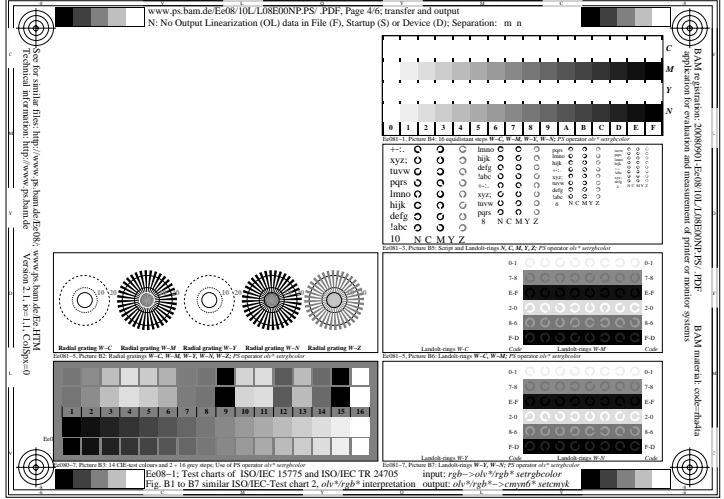
Fig. D1 to D7 similar ISO/IEC-Test chart 4, *oh*/rgb**-interpretation: output: *oh*/rgb**-*cmvnt**-*scrnyk**

www.ps.hm.de/E08/UL/L08R0N/PS/ PDF, Page 3/6, transfer and output
N: No Output Linearization (OL) data in File (F), Startup (S) or Device (D), Separation: c n

BAM registration: 20080901-E08/UL/L08R0N/PS/ JHP
application for evaluation and measurement of printer or monitor systems

BAM internal: code:hdlnh

Fig. D4 to D7 similar ISO/IEC-Test chart 4, *oh*/rgb**-interpretation: output: *oh*/rgb**-*cmvnt**-*scrnyk**



www.ps.bau.de/E08/10/L1RE08NPN.PDF, Page 5/6: transfer and output
N: No Output Linearization (OL) data in File (F), Startup (S) or Device (D), Separation: yn

RAM registration: 20089001-ISO101/L1RE08NPN.PDF
Application for evaluation and measurement of printer or monitor systems
Technical information: <http://www.ps.bau.de>
Version: 2.1, 1st 11.1, ColSp=0

E08-1: Test charts of ISO/IEC 15775 and ISO/IEC TR 24705
input: *rgb->oh*/rgb* setrgbcolor*
Fig. B1 to B7 similar ISO/IEC-Test chart 2, *oh*/rgb**-interpretation: output: *oh*/rgb*->cmwt6* setcmyk*

www.ps.bau.de/E08/10/L1RE08NPN.PDF, Page 5/6: transfer and output
N: No Output Linearization (OL) data in File (F), Startup (S) or Device (D), Separation: yn

RAM registration: 20089001-ISO101/L1RE08NPN.PDF
Application for evaluation and measurement of printer or monitor systems
Technical information: <http://www.ps.bau.de>
Version: 2.1, 1st 11.1, ColSp=0

E08-2: Test charts of ISO/IEC 15775 and ISO/IEC TR 24705
input: *rgb->oh*/rgb* setrgbcolor*
Fig. B4 to B7 similar ISO/IEC-Test chart 2, *oh*/rgb**-interpretation: output: *oh*/rgb*->cmwt6* setcmyk*

www.ps.bau.de/E08/10/L1RE08NPN.PDF, Page 5/6: transfer and output
N: No Output Linearization (OL) data in File (F), Startup (S) or Device (D), Separation: yn

RAM registration: 20089001-ISO101/L1RE08NPN.PDF
Application for evaluation and measurement of printer or monitor systems
Technical information: <http://www.ps.bau.de>
Version: 2.1, 1st 11.1, ColSp=0

E08-3: Test charts of ISO/IEC 15775 and ISO/IEC TR 24705
input: *rgb->oh*/rgb* setrgbcolor*
Fig. D1 to D7 similar ISO/IEC-Test chart 4, *oh*/rgb**-interpretation: output: *oh*/rgb*->cmwt6* setcmyk*

www.ps.bau.de/E08/10/L1RE08NPN.PDF, Page 5/6: transfer and output
N: No Output Linearization (OL) data in File (F), Startup (S) or Device (D), Separation: yn

RAM registration: 20089001-ISO101/L1RE08NPN.PDF
Application for evaluation and measurement of printer or monitor systems
Technical information: <http://www.ps.bau.de>
Version: 2.1, 1st 11.1, ColSp=0

E08-4: Test charts of ISO/IEC 15775 and ISO/IEC TR 24705
input: *rgb->oh*/rgb* setrgbcolor*
Fig. D4 to D7 similar ISO/IEC-Test chart 4, *oh*/rgb**-interpretation: output: *oh*/rgb*->cmwt6* setcmyk*

www.ps.bau.de/E08/10/L1RE08NPN.PDF, Page 5/6: transfer and output
N: No Output Linearization (OL) data in File (F), Startup (S) or Device (D), Separation: yn

RAM registration: 20089001-ISO101/L1RE08NPN.PDF
Application for evaluation and measurement of printer or monitor systems
Technical information: <http://www.ps.bau.de>
Version: 2.1, 1st 11.1, ColSp=0

E08-5: Test charts of ISO/IEC 15775 and ISO/IEC TR 24705
input: *rgb->oh*/rgb* setrgbcolor*
Fig. D1 to D7 similar ISO/IEC-Test chart 4, *oh*/rgb**-interpretation: output: *oh*/rgb*->cmwt6* setcmyk*

www.ps.bau.de/E08/10/L1RE08NPN.PDF, Page 5/6: transfer and output
N: No Output Linearization (OL) data in File (F), Startup (S) or Device (D), Separation: yn

RAM registration: 20089001-ISO101/L1RE08NPN.PDF
Application for evaluation and measurement of printer or monitor systems
Technical information: <http://www.ps.bau.de>
Version: 2.1, 1st 11.1, ColSp=0

E08-6: Test charts of ISO/IEC 15775 and ISO/IEC TR 24705
input: *rgb->oh*/rgb* setrgbcolor*
Fig. B1 to B7 similar ISO/IEC-Test chart 2, *oh*/rgb**-interpretation: output: *oh*/rgb*->cmwt6* setcmyk*

www.ps.bau.de/E08/10/L1RE08NPN.PDF, Page 5/6: transfer and output
N: No Output Linearization (OL) data in File (F), Startup (S) or Device (D), Separation: yn

RAM registration: 20089001-ISO101/L1RE08NPN.PDF
Application for evaluation and measurement of printer or monitor systems
Technical information: <http://www.ps.bau.de>
Version: 2.1, 1st 11.1, ColSp=0

E08-7: Test charts of ISO/IEC 15775 and ISO/IEC TR 24705
input: *rgb->oh*/rgb* setrgbcolor*
Fig. B4 to B7 similar ISO/IEC-Test chart 2, *oh*/rgb**-interpretation: output: *oh*/rgb*->cmwt6* setcmyk*

www.ps.bau.de/E08/10/L1RE08NPN.PDF, Page 5/6: transfer and output
N: No Output Linearization (OL) data in File (F), Startup (S) or Device (D), Separation: yn

RAM registration: 20089001-ISO101/L1RE08NPN.PDF
Application for evaluation and measurement of printer or monitor systems
Technical information: <http://www.ps.bau.de>
Version: 2.1, 1st 11.1, ColSp=0

E08-8: Test charts of ISO/IEC 15775 and ISO/IEC TR 24705
input: *rgb->oh*/rgb* setrgbcolor*
Fig. D1 to D7 similar ISO/IEC-Test chart 4, *oh*/rgb**-interpretation: output: *oh*/rgb*->cmwt6* setcmyk*

www.ps.bau.de/E08/10/L1RE08NPN.PDF, Page 5/6: transfer and output
N: No Output Linearization (OL) data in File (F), Startup (S) or Device (D), Separation: yn

RAM registration: 20089001-ISO101/L1RE08NPN.PDF
Application for evaluation and measurement of printer or monitor systems
Technical information: <http://www.ps.bau.de>
Version: 2.1, 1st 11.1, ColSp=0

E08-9: Test charts of ISO/IEC 15775 and ISO/IEC TR 24705
input: *rgb->oh*/rgb* setrgbcolor*
Fig. D4 to D7 similar ISO/IEC-Test chart 4, *oh*/rgb**-interpretation: output: *oh*/rgb*->cmwt6* setcmyk*