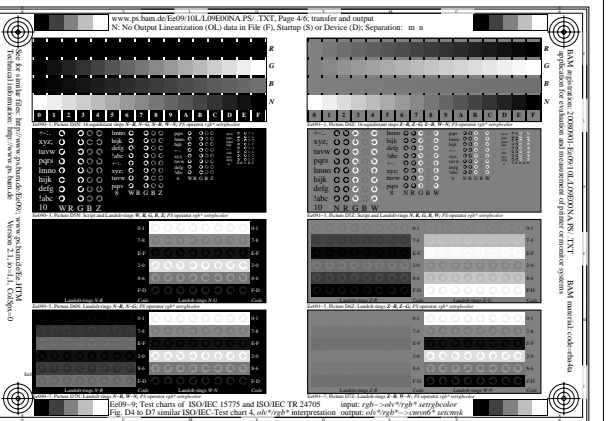
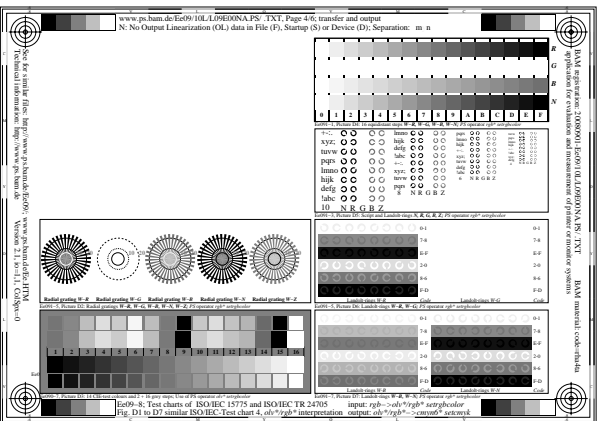
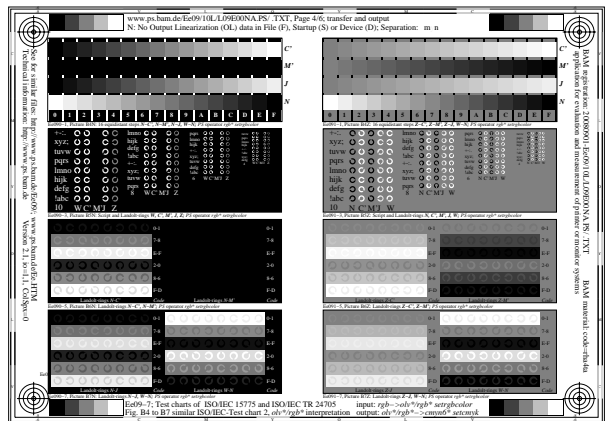
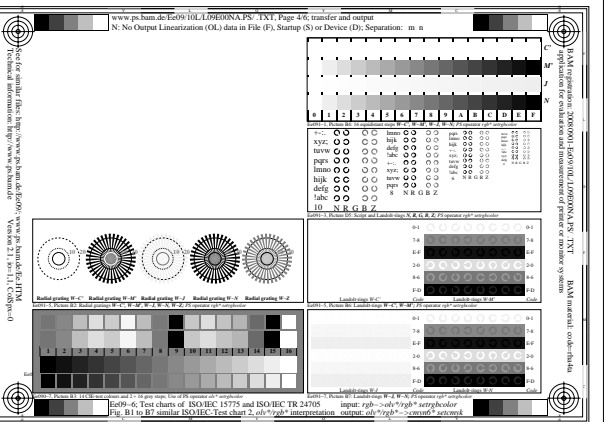
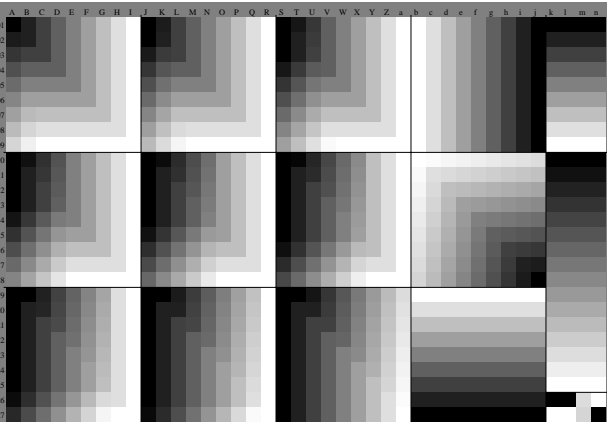
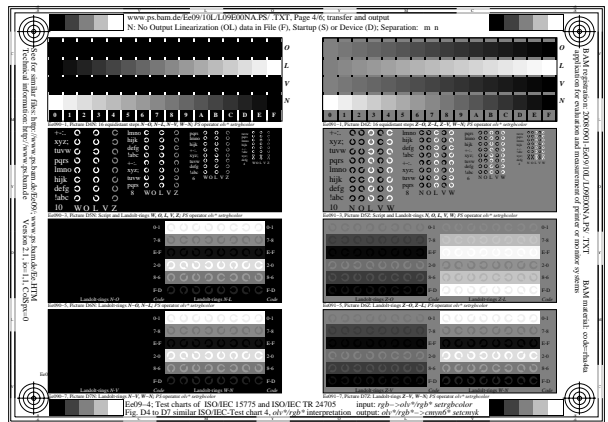
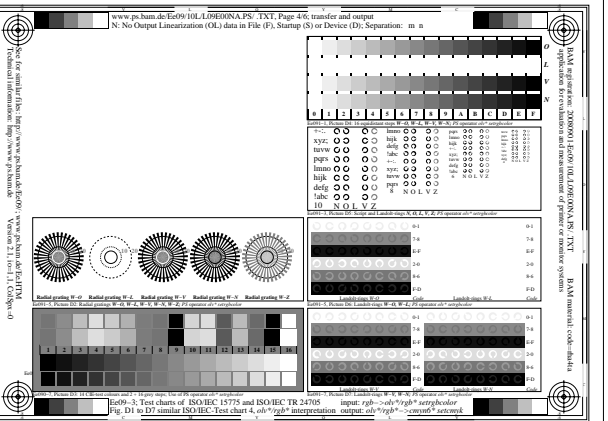
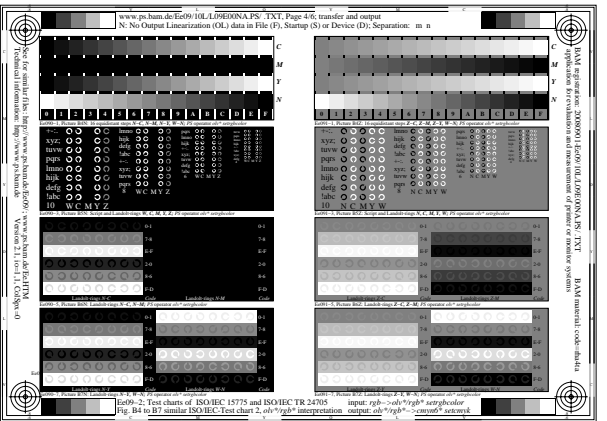
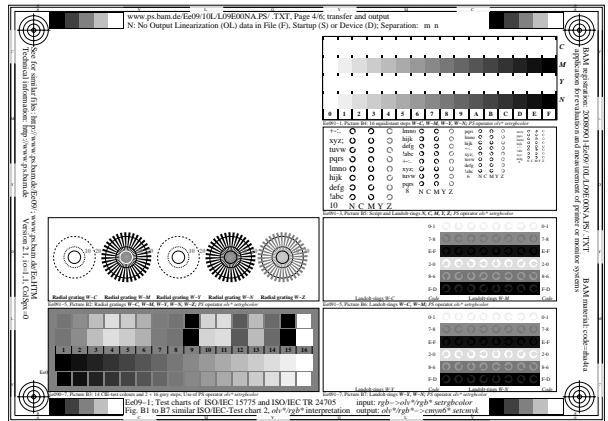


Ee09; Test charts of ISO/IEC 15775 and ISO/IEC TR 24705  
Fig. Bx to Dx similar ISO/IEC-test charts, *olv\*/rgb\** interpretation output: *olv\*/rgb\** → *cmynb6\* setcmyk*

Ee09; Test charts of ISO/IEC 15775 and ISO/IEC TR 24705 input: *rgb*→*olv\*/rgb\* setrgbcolor*  
Fig. Bx to Dx similar ISO/IEC-test charts, *olv\*/rgb\** interpretation output: *olv\*/rgb\**→*cmyn6\* setcmyn*

BAM registration: 20080901-Ee09/10L/L09E00NA.PS/.TXT  
application for evaluation and measurement of printer or monitor systems  
BAM material: code=rh4ta

See for similar files: <http://www.ps.bam.de/Ee09/>; [www.ps.bam.de/Ee.HTM](http://www.ps.bam.de/Ee.HTM)  
Technical information: <http://www.ps.bam.de> Version 2.1, io=1,1, ColSpx=0



BAM registration: 20080901-Ee09/10L/L09E00NA.PS/.TXT  
application for evaluation and measurement of printer or monitor systems  
BAM material: code=rh4ta

See for similar files: <http://www.ps.bam.de/Ee09/>; [www.ps.bam.de/Ee.HTM](http://www.ps.bam.de/Ee.HTM)  
Technical information: <http://www.ps.bam.de> Version 2.1, io=1,1, ColSpx=0

