

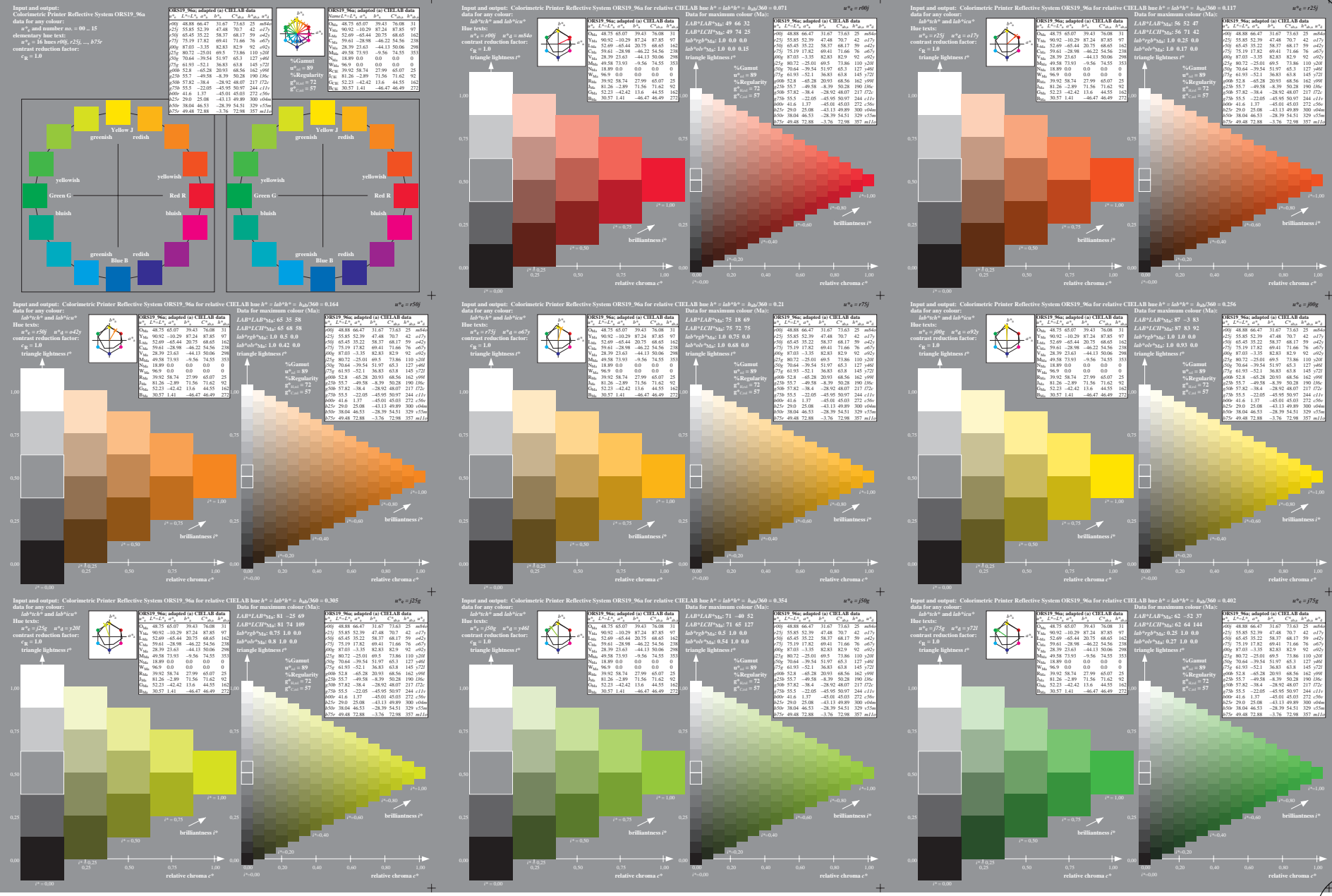
See for similar files: <http://www.ps.bam.de/Ee28/>; [www.ps.bam.de/Ee.HTM](http://www.ps.bam.de/Ee.HTM)  
 Technical information: <http://www.ps.bam.de> Version 2.1, io=1,1, ColSpX=1

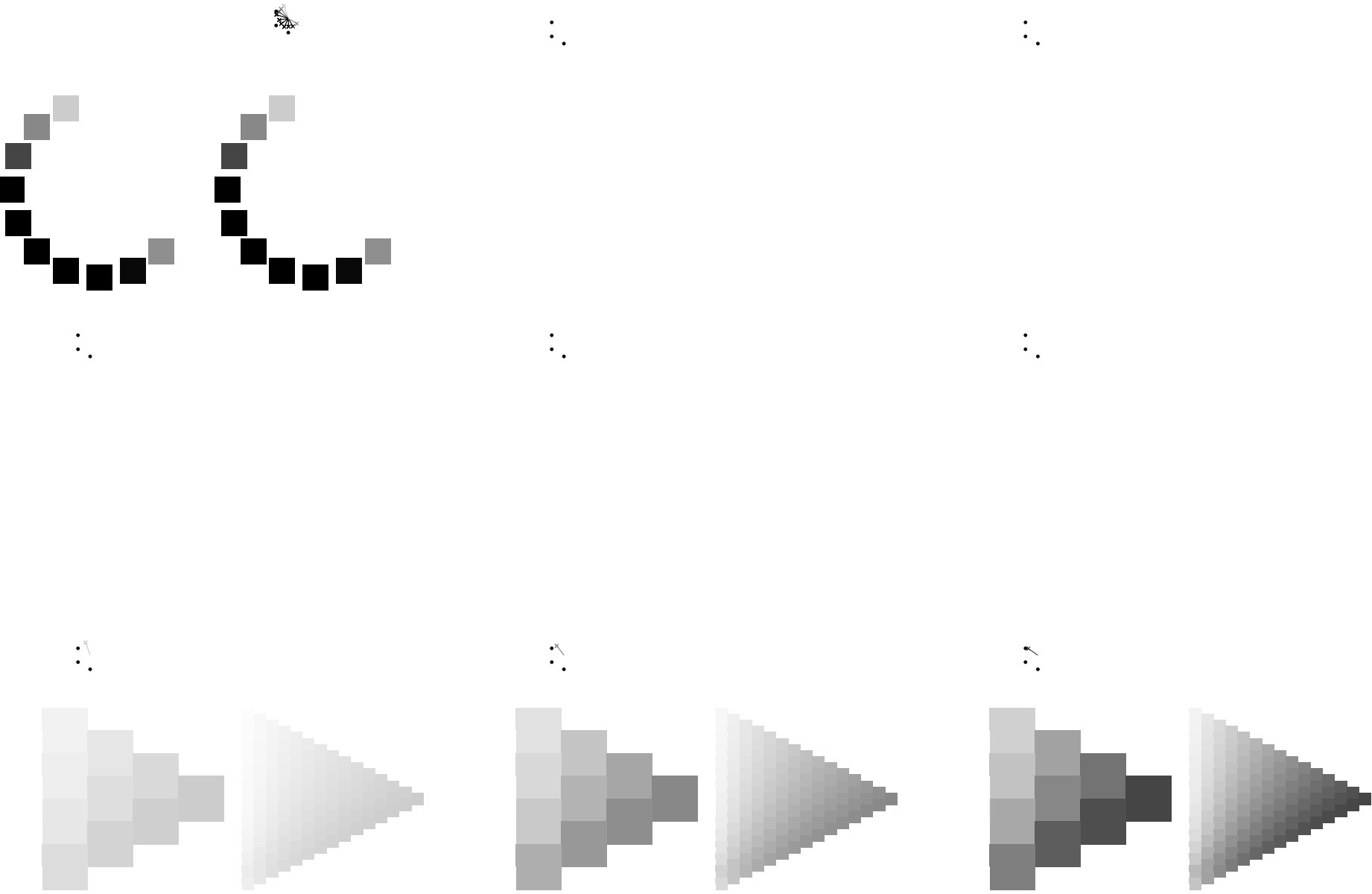
BAM registration: 20080901-Ee28/10L/L28E00NP.PS/.PDF  
 application for evaluation and measurement of printer or monitor systems  
 BAM material: code=rh4ta

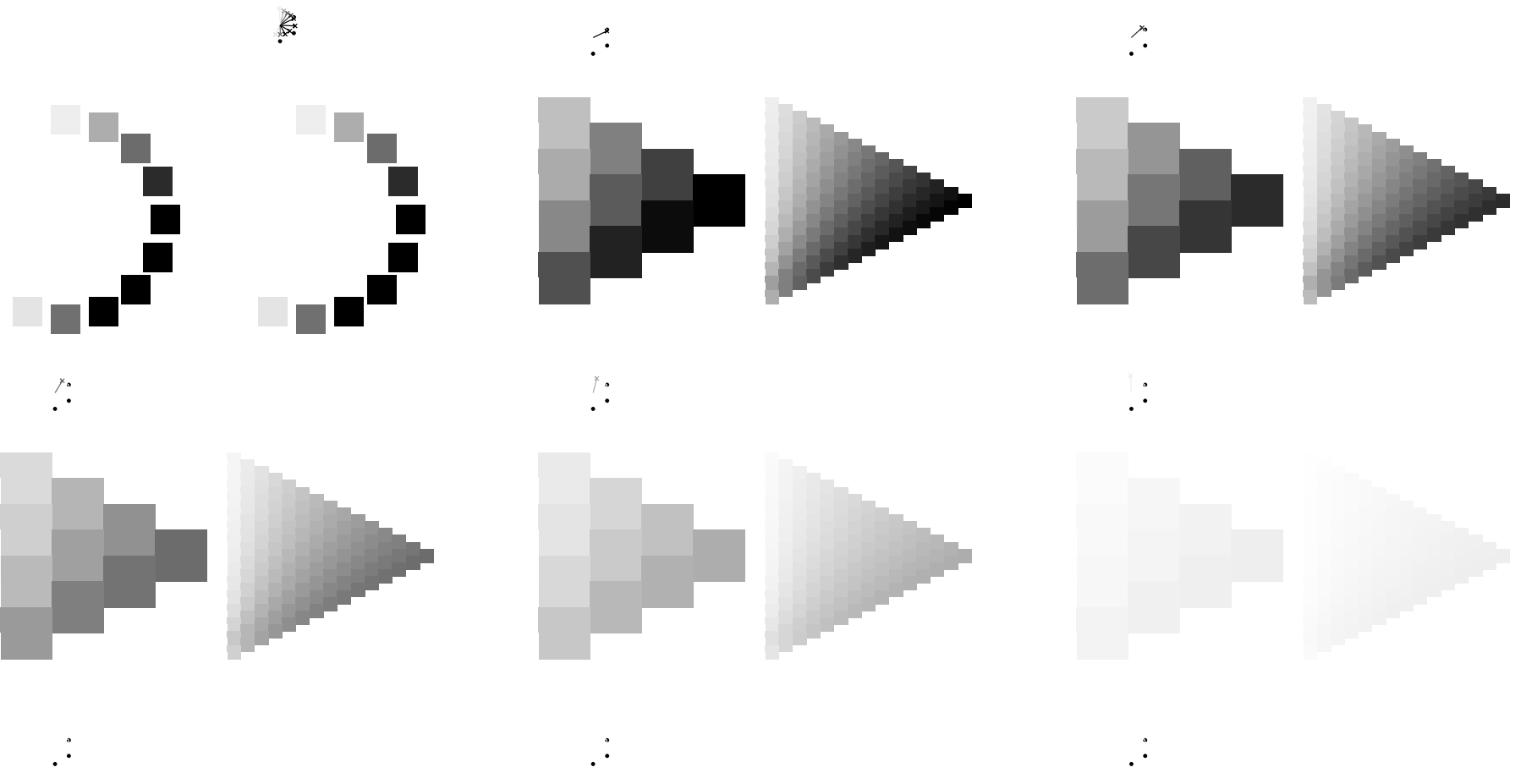


See for similar files: <http://www.ps.bam.de/Ee28/>; [www.ps.bam.de/Version\\_2.1,io=1,1,Colspx=1](http://www.ps.bam.de/Version_2.1,io=1,1,Colspx=1)

BAM registration: 20080901-Ee28/10L/L28E00NP.PS/.PDF  
 application for evaluation and measurement of printer or monitor systems  
 BAM material: code=rh4ta

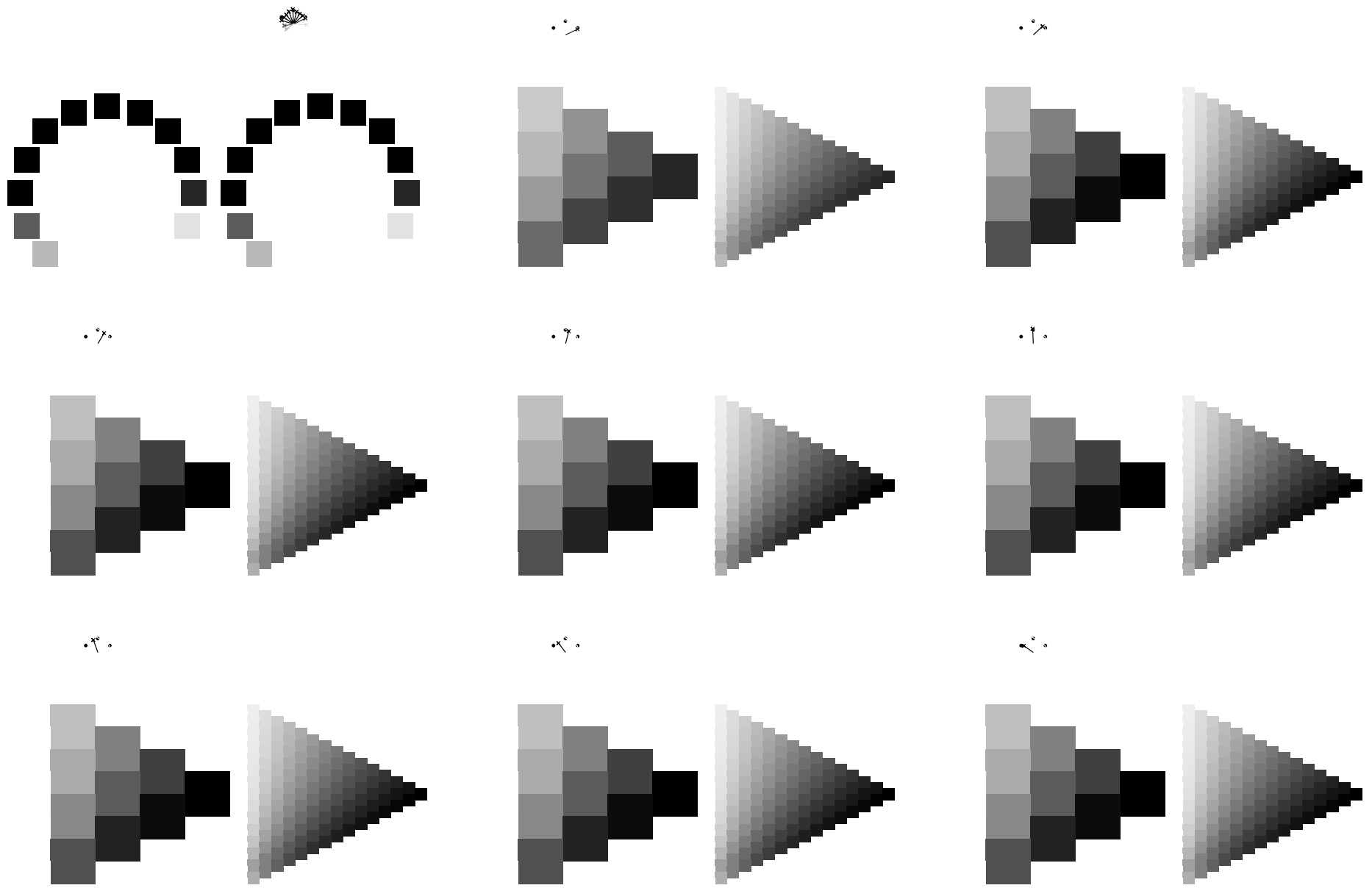






See for similar files: <http://www.ps.bam.de/Ee28/>; [www.ps.bam.de/Ee.HTM](http://www.ps.bam.de/Ee.HTM)  
Technical information: <http://www.ps.bam.de> Version 2.1, io=1,1, ColSpx=1

BAM registration: 20080901-Ee28/10L/L28E00NP.PS/.PDF BAM material: code=rha4ta  
application for evaluation and measurement of printer or monitor systems



**Input and output: Colorimetric Printer Reflective System ORS19\_96a for relative CIE LAB hue  $h^*$  =  $lab^*a^*/a^*_0$  /  $h_{50/360} = 0.164$**   
 Data for any colour:  
 Lab<sup>ref</sup>/a<sup>ref</sup> and Lab<sup>dev</sup>/a<sup>dev</sup>  
 Hue texts:  $u^*_{00} = 0.00$ ,  $u^*_{90} = 0.62$   
 contrast reduction factor:  $c_{10}$   
 triangle lightness  $l^*$   
 LAB/LAB<sub>50</sub>: 65.58 / 58.88  
 Lab<sup>ref</sup>/Lab<sub>50</sub>: 1.0 / 0.5 / 0.0  
 Lab<sup>dev</sup>/Lab<sub>50</sub>: 1.0 / 0.42 / 0.0  
 triangle lightness  $l^*$   
 %Gamut  $u^*_{00} = 89$   
 %Regularity  $u^*_{90} = 72$   
 %C<sub>0.2</sub>  $u^*_{50} = 57$

**relative chroma  $c^*$  vs relative chroma  $c^*$**   
 Brilliance  $l^*$  vs relative chroma  $c^*$