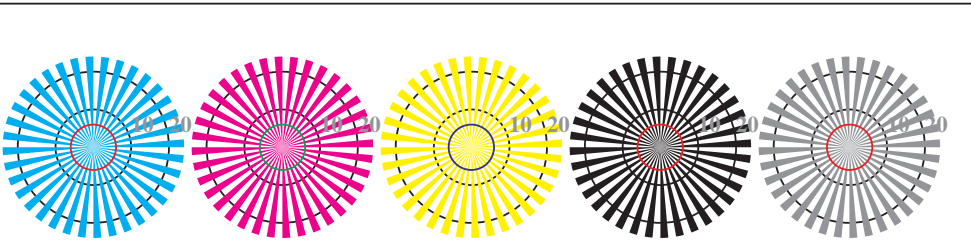


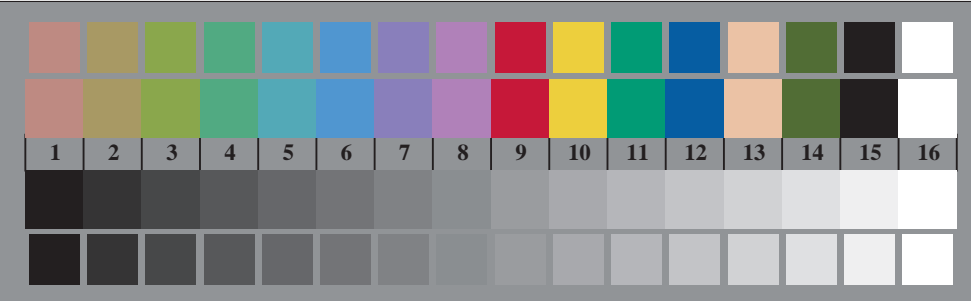


Fe000-3, Picture B1: Flower motif, 14 CIE-test colours, 16 grey steps (sf); PS operators *settransfer*, 4 *colorimage*



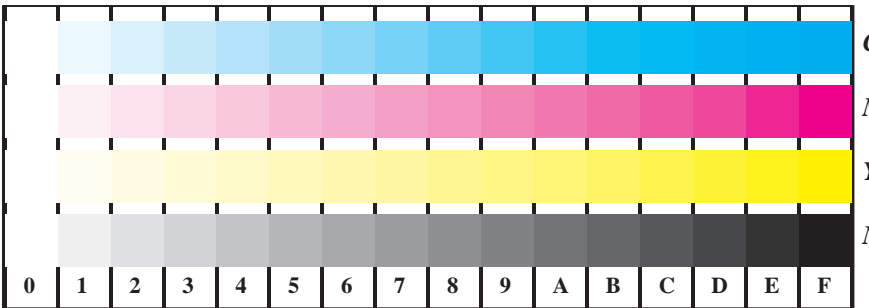
Radial grating W-C   Radial grating W-M   Radial grating W-Y   Radial grating W-N   Radial grating W-Z

Fe000-5, Picture B2: Radial gratings W-C, W-M, W-Y, W-N, W-Z; PS operator *olv\* setrgbcolor*



Fe000-7, Picture B3: 14 CIE-test colours and 2 + 16 grey steps; Use of PS operator *olv\* setrgbcolor*

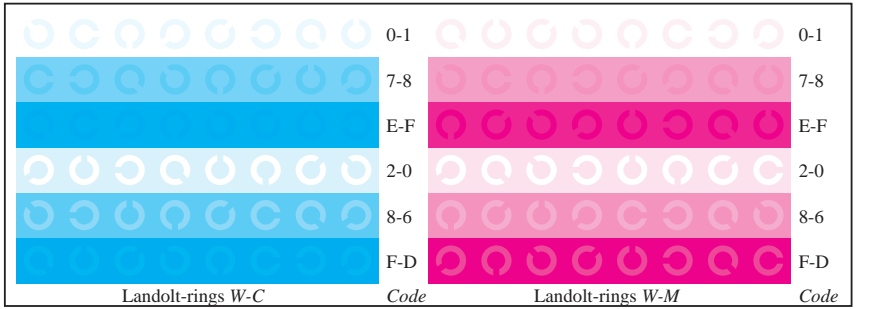
Fe00; Test chart of ISO/IEC 15775 and ISO/IEC TR 24705  
 Fig. B1 to B7 similar ISO/IEC-test chart 2, *olv\** interpretation



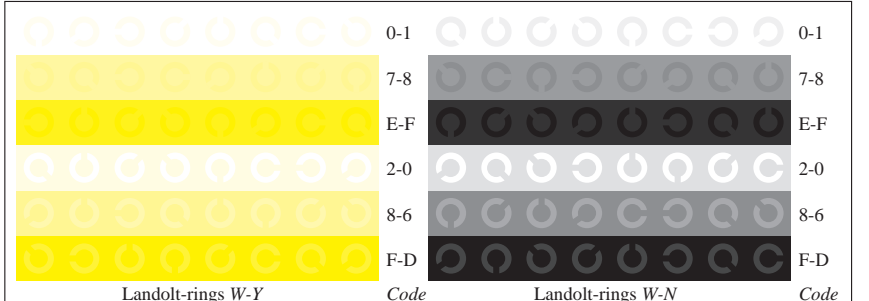
Fe001-1, Picture B4: 16 equidistant steps W-C, W-M, W-Y, W-N; PS operator *olv\* setrgbcolor*



Fe001-3, Picture B5: Script and Landolt-rings N, C, M, Y, Z; PS operator *olv\* setrgbcolor*



Fe001-5, Picture B6: Landolt-rings W-C, W-M; PS operator *olv\* setrgbcolor*



Fe001-7, Picture B7: Landolt-rings W-Y, W-N; PS operator *olv\* setrgbcolor*

input: *rgb*->*olv\* setrgbcolor*  
 output: *olv\**->*cmyb6\* setcmyk*

See for similar files: <http://www.ps.bam.de/Fe00/>; <http://www.ps.bam.de/Fe00/>  
 Technical information: <http://www.ps.bam.de>  
 Version 2.1, io=1,1, ColSPx=1

BAM registration: 20080901-Fe00/10L/L00E00NP.PS/ .PDF   BAM material: code=rh4ta  
 application for evaluation and measurement of printer or monitor systems