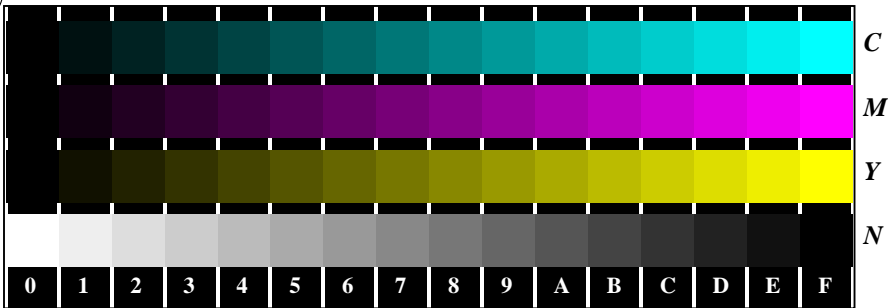
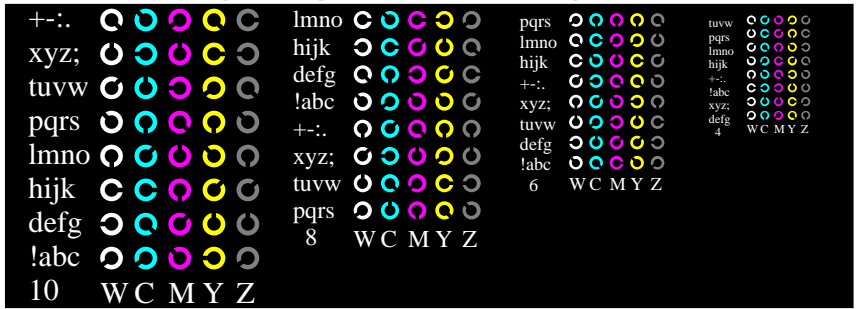


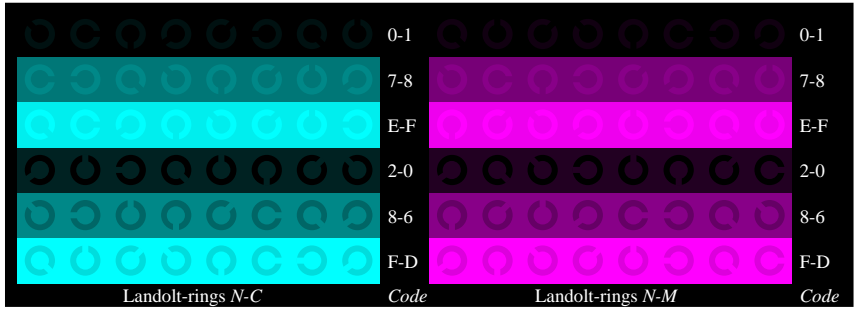
BAM registration: 20080901-Fe01/10L/L01E00NP.PS/ .PDF BAM material: code=rh4ta
 application for evaluation and measurement of printer or monitor systems



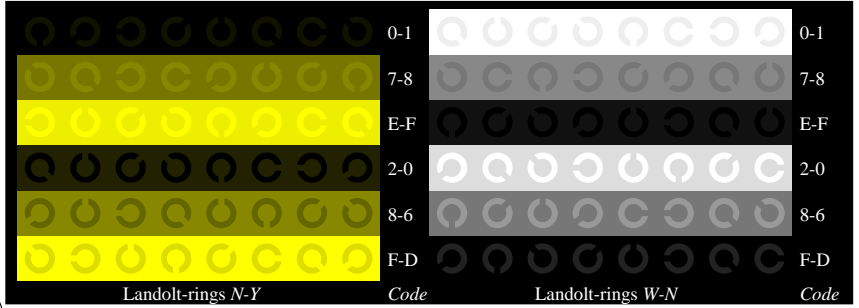
Fe010-1, Picture B4N: 16 equidistant steps N-C, N-M, N-Y, W-N; PS operator *olv* setrgbcolor*



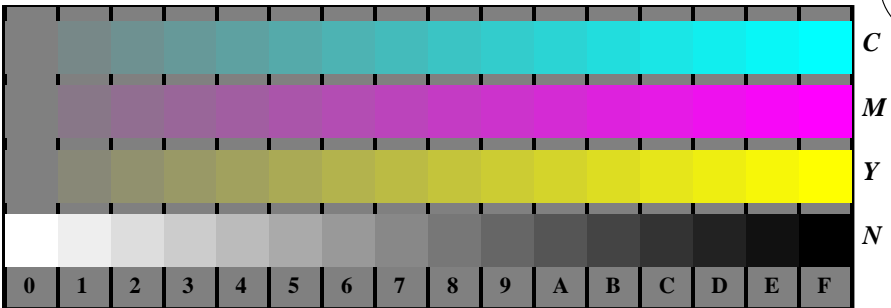
Fe010-3, Picture B5N: Script and Landolt-rings W, C, M, Y, Z; PS operator *olv* setrgbcolor*



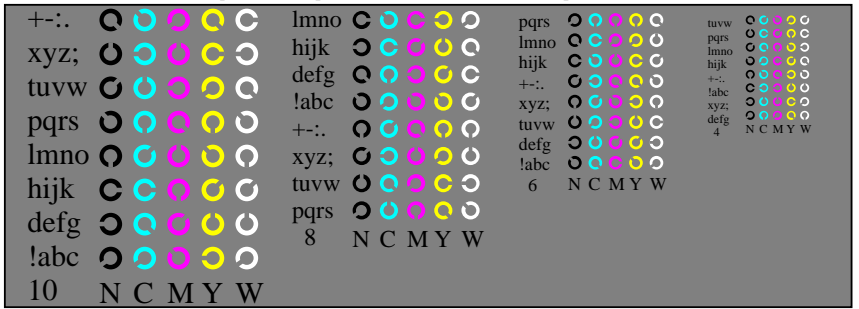
Fe010-5, Picture B6N: Landolt-rings N-C, N-M; PS operator *olv* setrgbcolor*



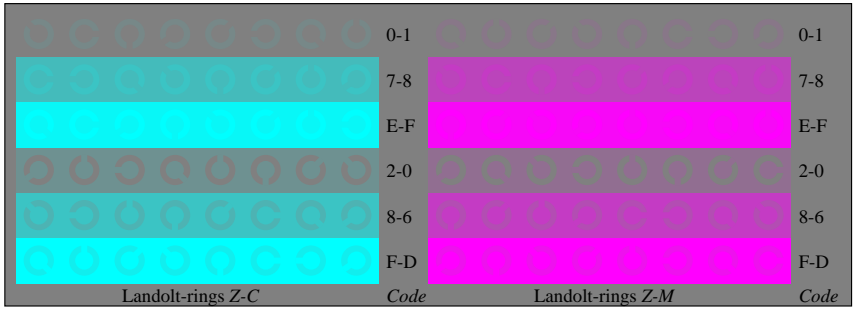
Fe010-7, Picture B7N: Landolt-rings N-Y, W-N; PS operator *olv* setrgbcolor*



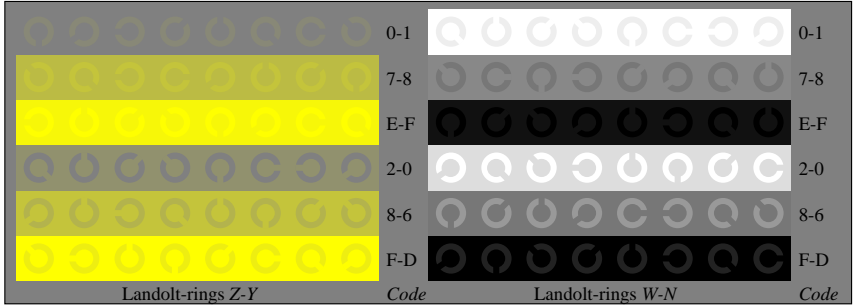
Fe011-1, Picture B4Z: 16 equidistant steps Z-C, Z-M, Z-Y, W-N; PS operator *olv* setrgbcolor*



Fe011-3, Picture B5Z: Script and Landolt-rings N, C, M, Y, W; PS operator *olv* setrgbcolor*



Fe011-5, Picture B6Z: Landolt-rings Z-C, Z-M; PS operator *olv* setrgbcolor*



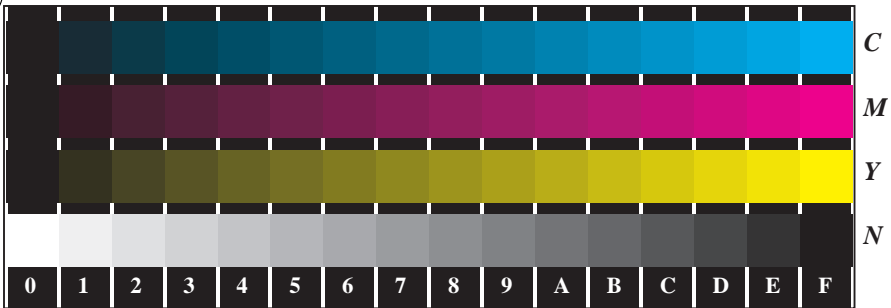
Fe011-7, Picture B7Z: Landolt-rings Z-Y, W-N; PS operator *olv* setrgbcolor*

Fe01; Test chart of ISO/IEC 15775 and ISO/IEC TR 24705 input: *rgb* -> *olv* setrgbcolor*
 Fig. B4 to B7 similar ISO/IEC-test chart 2, *olv** interpretation output: no change compared to input

See for similar files: <http://www.ps.bam.de/Fe01/>; www.ps.bam.de/Fe.HTM
 Technical information: <http://www.ps.bam.de>
 Version 2.1, io=1,1, ColSPx=1

See for similar files: <http://www.ps.bam.de/Fe01/>;
Technical information: <http://www.ps.bam.de>
Version 2.1, io=1,1, ColSPx=1

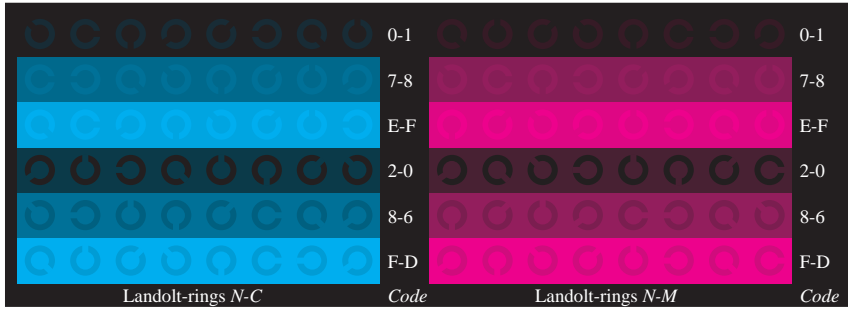
BAM registration: 20080901-Fe01/10L/L01E00NP.PS/.PDF
application for evaluation and measurement of printer or monitor systems
BAM material: code=rh4ta



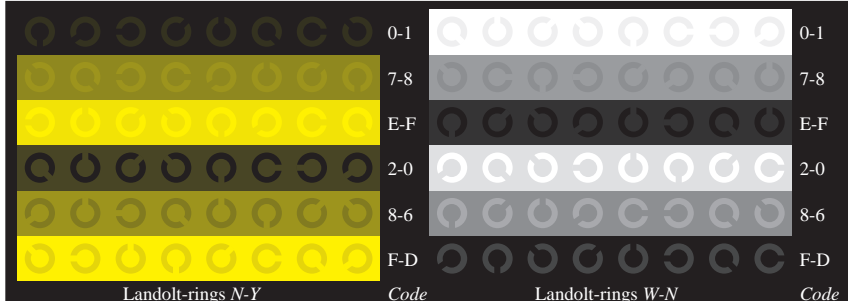
Fe010-1, Picture B4N: 16 equidistant steps N-C, N-M, N-Y, W-N; PS operator olv* setrgbcolor



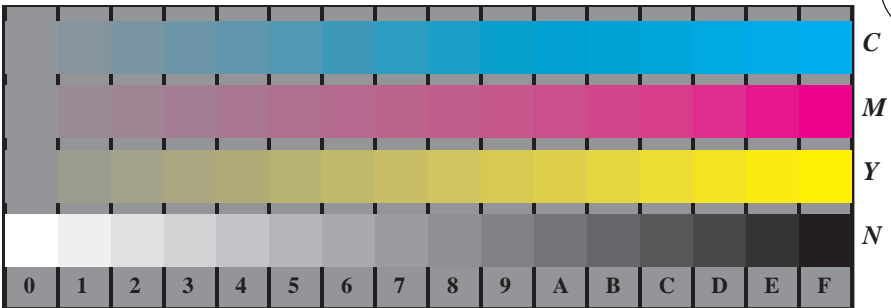
Fe010-3, Picture B5N: Script and Landolt-rings W, C, M, Y, Z; PS operator olv* setrgbcolor



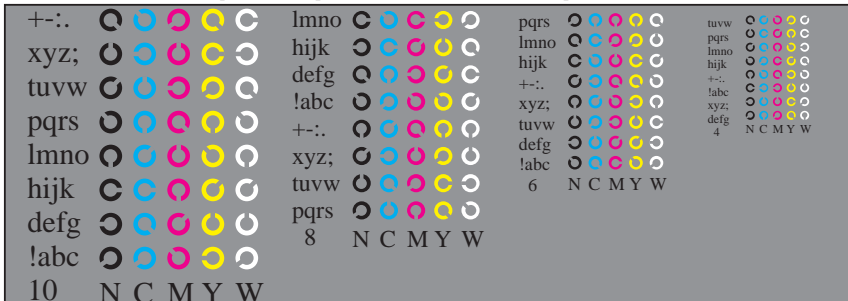
Fe010-5, Picture B6N: Landolt-rings N-C, N-M; PS operator olv* setrgbcolor



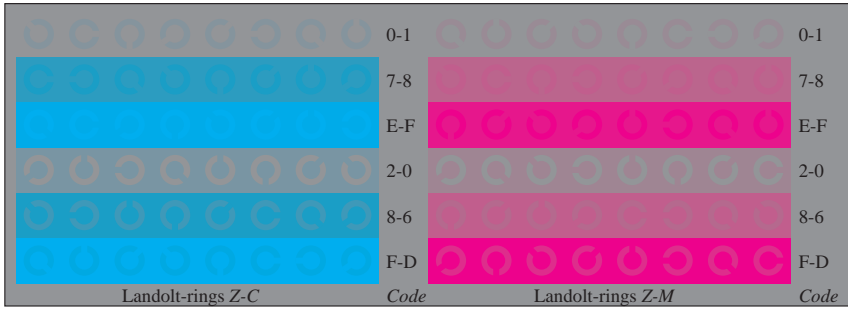
Fe010-7, Picture B7N: Landolt-rings N-Y, W-N; PS operator olv* setrgbcolor



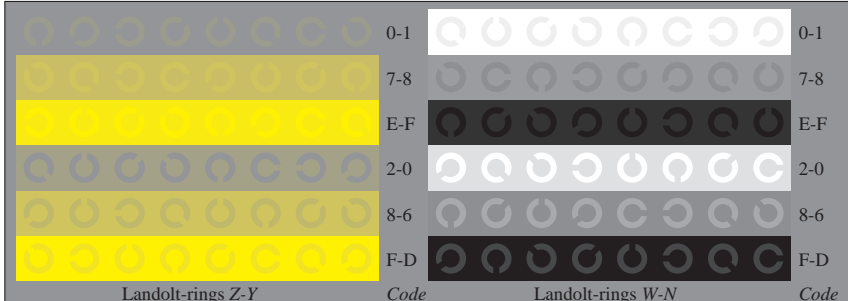
Fe011-1, Picture B4Z: 16 equidistant steps Z-C, Z-M, Z-Y, W-N; PS operator olv* setrgbcolor



Fe011-3, Picture B5Z: Script and Landolt-rings N, C, M, Y, W; PS operator olv* setrgbcolor



Fe011-5, Picture B6Z: Landolt-rings Z-C, Z-M; PS operator olv* setrgbcolor



Fe011-7, Picture B7Z: Landolt-rings Z-Y, W-N; PS operator olv* setrgbcolor

Fe01; Test chart of ISO/IEC 15775 and ISO/IEC TR 24705
Fig. B4 to B7 similar ISO/IEC-test chart 2, olv* interpretation

input: rgb->olv* setrgbcolor
output: olv*->cmyb6* setcmyk

BAM registration: 20080901-Fe01/10L/L01E00NP.PS/ .PDF BAM material: code=rh4ta
application for evaluation and measurement of printer or monitor systems

See for similar files: <http://www.ps.bam.de/Fe01/>; www.ps.bam.de/Fe.HTM
Technical information: <http://www.ps.bam.de> Version 2.1, io=1,1, ColSpX=1



oooooooo

oooooooo

oooooooo

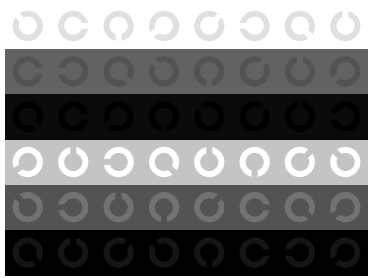
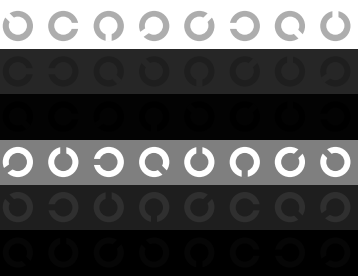
oooooooo

oooooooo

oooooooo

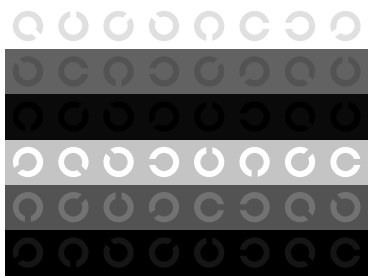
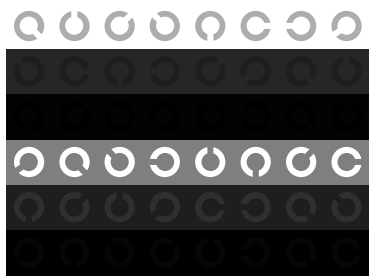
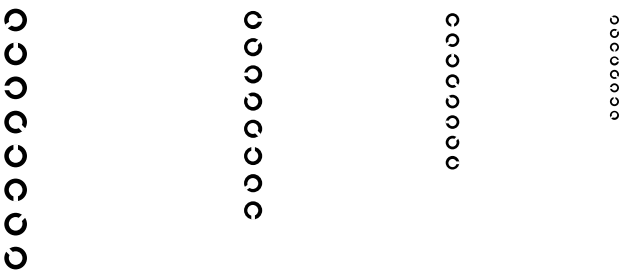
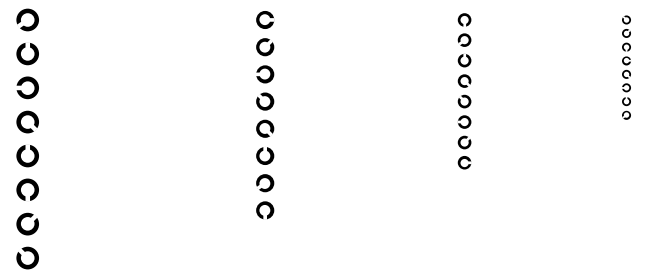
oooooooo

oooooooo



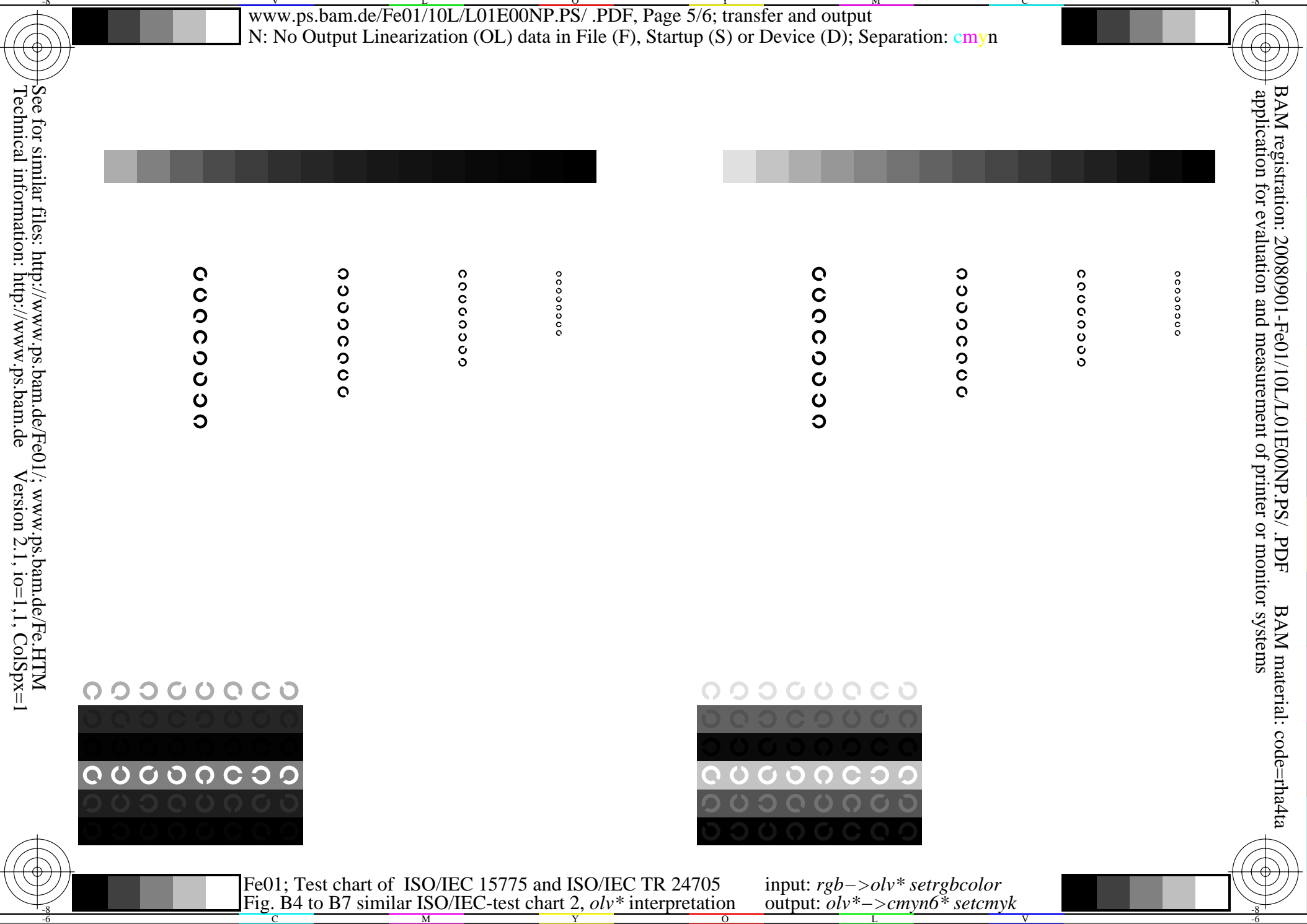
BAM registration: 20080901-Fe01/10L/L01E00NP.PS/ .PDF BAM material: code=rh4ta
application for evaluation and measurement of printer or monitor systems

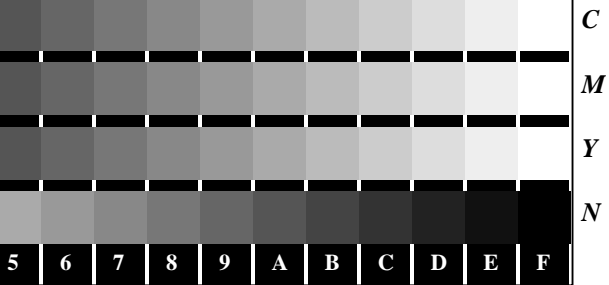
See for similar files: <http://www.ps.bam.de/Fe01/>; www.ps.bam.de/Fe.HTM
Technical information: <http://www.ps.bam.de> Version 2.1, io=1,1, ColSpX=1



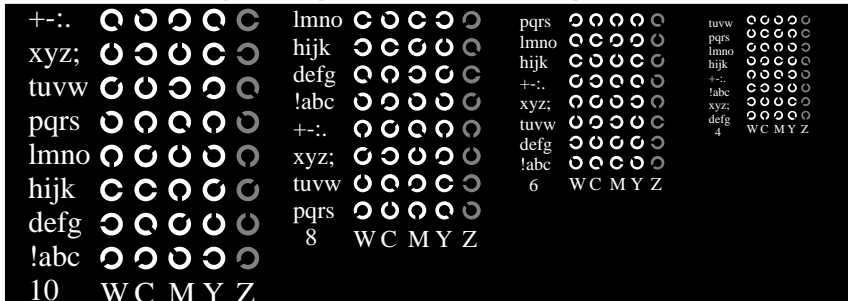
BAM registration: 20080901-Fe01/10L/L01E00NP.PS/ .PDF BAM material: code=rh4ta
application for evaluation and measurement of printer or monitor systems

See for similar files: <http://www.ps.bam.de/Fe01/>; [www.ps.bam.de/Fe01/Version 2.1, io=1, 1, ColSpX=1](http://www.ps.bam.de/Fe01/Version2.1,io=1,1,ColSpX=1)

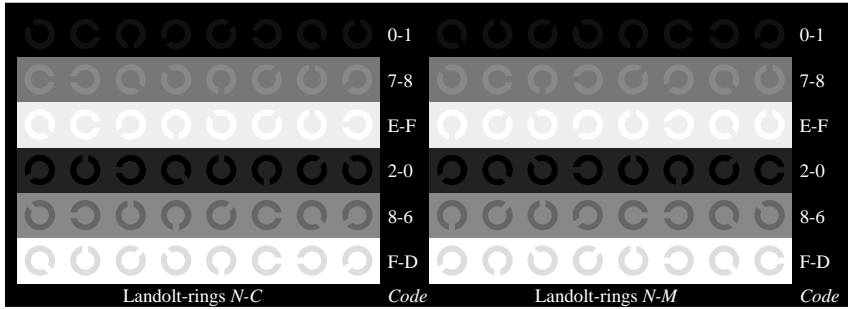




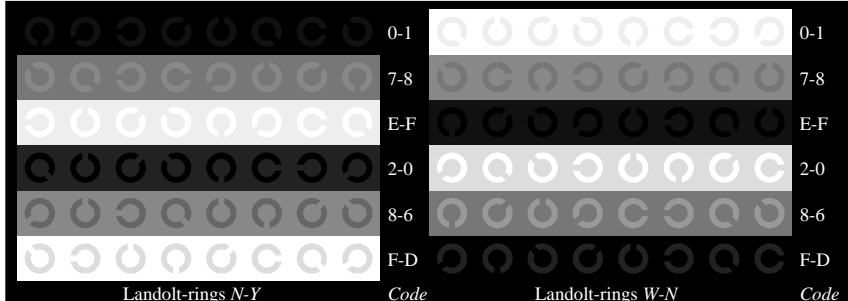
Fe010-1, Picture B4N: 16 equidistant steps N-C, N-M, N-Y, W-N; PS operator olv* setrgbcolor



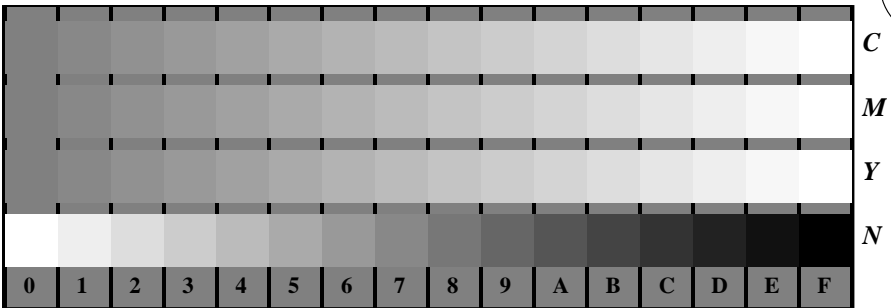
Fe010-3, Picture B5N: Script and Landolt-rings W, C, M, Y, Z; PS operator olv* setrgbcolor



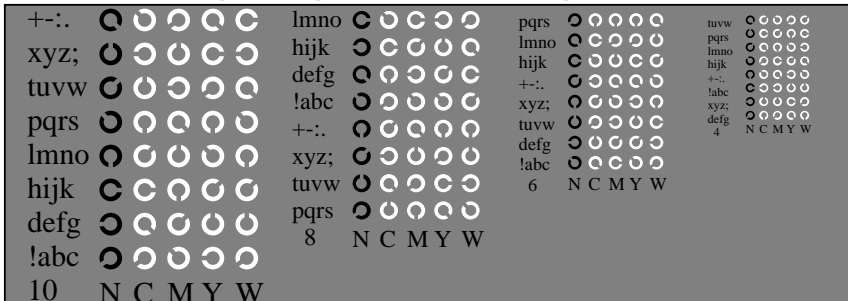
Fe010-5, Picture B6N: Landolt-rings N-C, N-M; PS operator olv* setrgbcolor



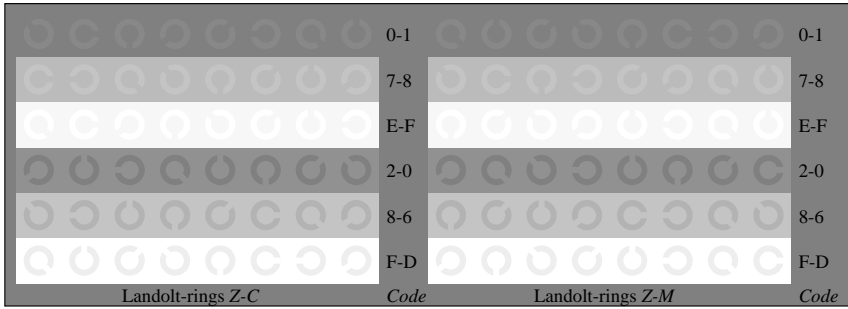
Fe010-7, Picture B7N: Landolt-rings N-Y, W-N; PS operator olv* setrgbcolor



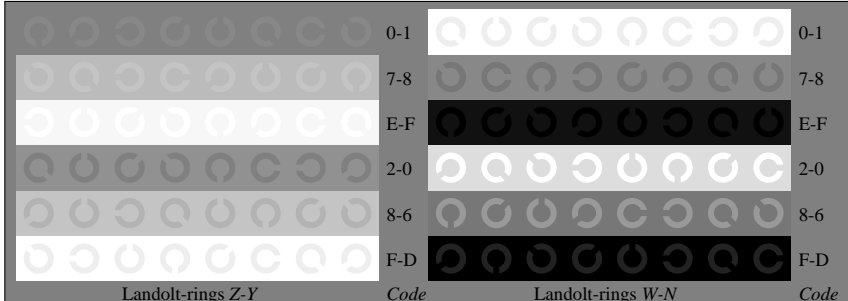
Fe011-1, Picture B4Z: 16 equidistant steps Z-C, Z-M, Z-Y, W-N; PS operator olv* setrgbcolor



Fe011-3, Picture B5Z: Script and Landolt-rings N, C, M, Y, W; PS operator olv* setrgbcolor



Fe011-5, Picture B6Z: Landolt-rings Z-C, Z-M; PS operator olv* setrgbcolor



Fe011-7, Picture B7Z: Landolt-rings Z-Y, W-N; PS operator olv* setrgbcolor



See for similar files: http://www.ps.bam.de/Fe01/ Technical information: http://www.ps.bam.de

Version 2.1, io=1,1, ColSPx=1

BAM registration: 20080901-Fe01/10L/L01E00NP.PS/ .PDF application for evaluation and measurement of printer or monitor systems BAM material: code=rh4ta