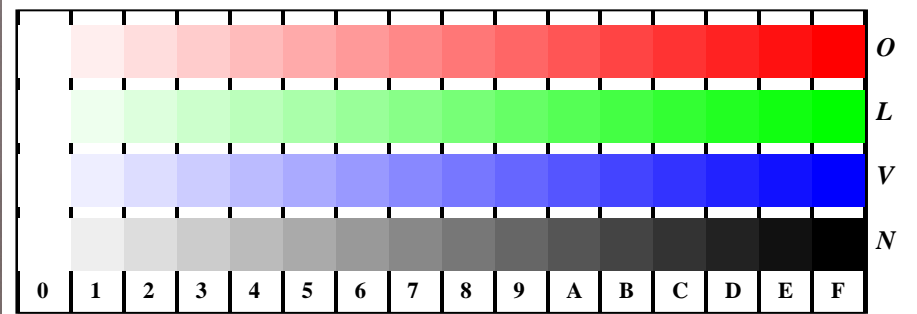
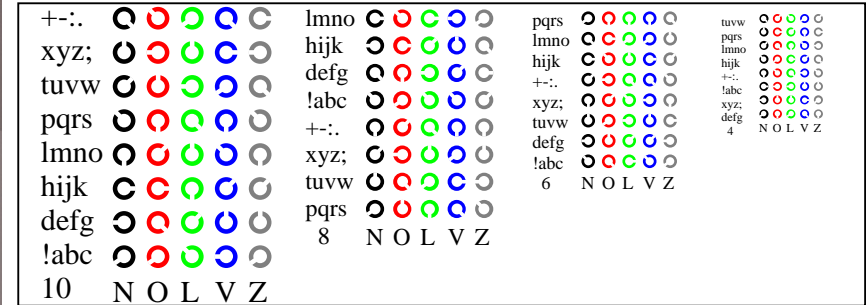




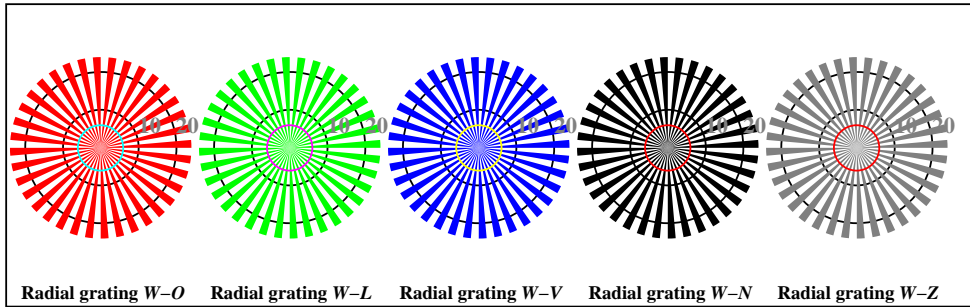
Fe020-3, Picture B1: Flower motif, 14 CIE-test colours, 16 grey steps (nf); PS operators *settransfer*, 4 *colorimage*



Fe021-1, Picture D4: 16 equidistant steps *W-O*, *W-L*, *W-V*, *W-N*; PS operator *olv\* setrgbcolor*

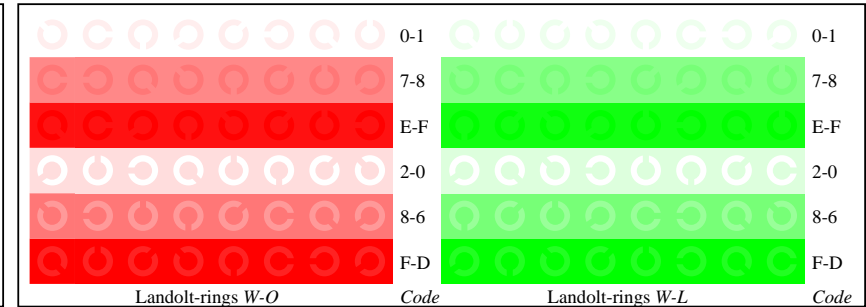


Fe021-3, Picture D5: Script and Landolt-rings *N*, *O*, *L*, *V*, *Z*; PS operator *olv\* setrgbcolor*

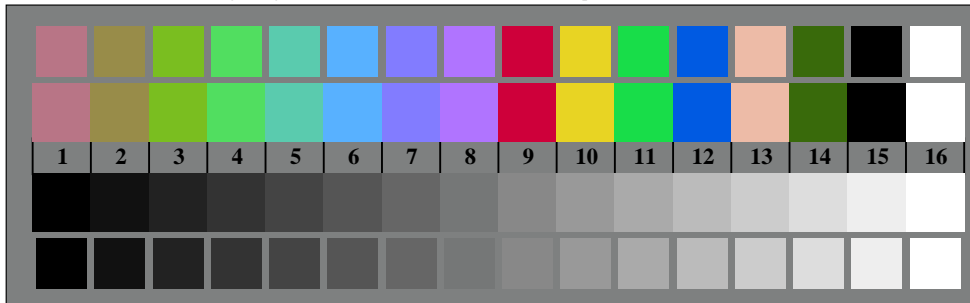


Radial grating *W-O* Radial grating *W-L* Radial grating *W-V* Radial grating *W-N* Radial grating *W-Z*

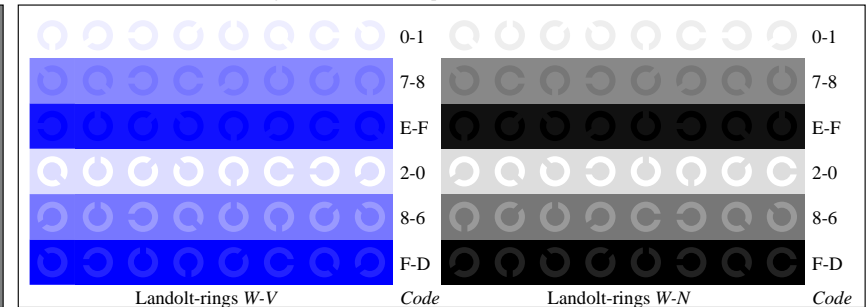
Fe020-5, Picture D2: Radial gratings *W-O*, *W-L*, *W-V*, *W-N*, *W-Z*; PS operator *olv\* setrgbcolor*



Fe021-5, Picture D6: Landolt-rings *W-O*, *W-L*; PS operator *olv\* setrgbcolor*



Fe020-7, Picture D3: 14 CIE-test colours and 2 + 16 grey steps; Use of PS operator *olv\* setrgbcolor*



Fe021-7, Picture D7: Landolt-rings *W-V*, *W-N*; PS operator *olv\* setrgbcolor*