



Fe040-3, Picture B1: Flower motif, 14 CIE-test colours, 16 grey steps (sf), PS operators *settransfer*, *4_colorimage*

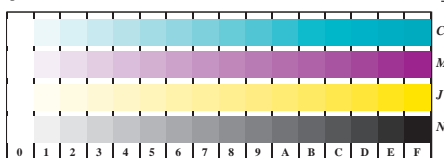


Fe071-5, Picture B2: Radial gratings W-C', W-M', W-J, W-N, W-Z; PS operator *rgb* setrgbcolor*

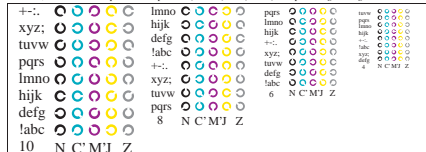


Fe070-7, Picture B3: 14 CIE-test colours and 2 + 16 grey steps; Use of PS operator *oly* setrgbcolor*

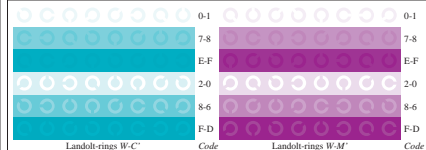
Fe04; Test chart of ISO/IEC 15775 and ISO/IEC TR 24705
 Fig. B1 to B7 similar ISO/IEC-test chart 2, *rgb** interpretation



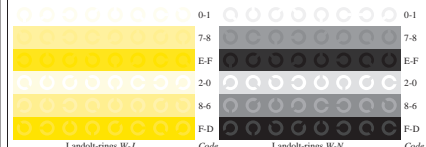
Fe071-1, Picture B4: 16 equidistant steps W-C', W-M', W-J, W-N; PS operator *rgb* setrgbcolor*



Fe071-3, Picture B5: Script and Landolt-rings N, C', M', J, Z; PS operator *rgb* setrgbcolor*



Fe071-5, Picture B6: Landolt-rings W-C', W-M'; PS operator *rgb* setrgbcolor*



Fe071-7, Picture B7: Landolt-rings W-J, W-N; PS operator *rgb* setrgbcolor*

input: *rgb* -> *rgb* setrgbcolor*
 output: *rgb** -> *cmy6* setcmyk*