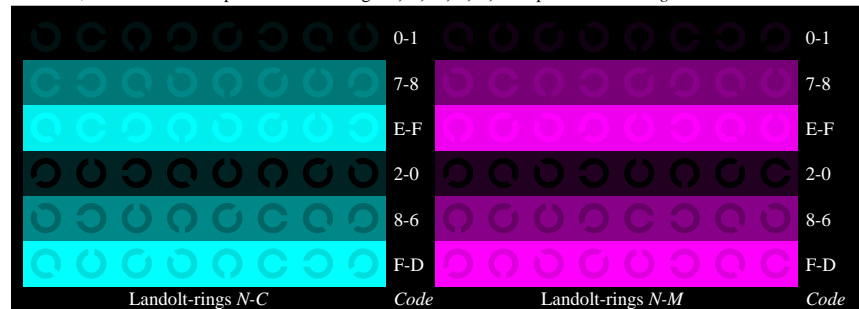


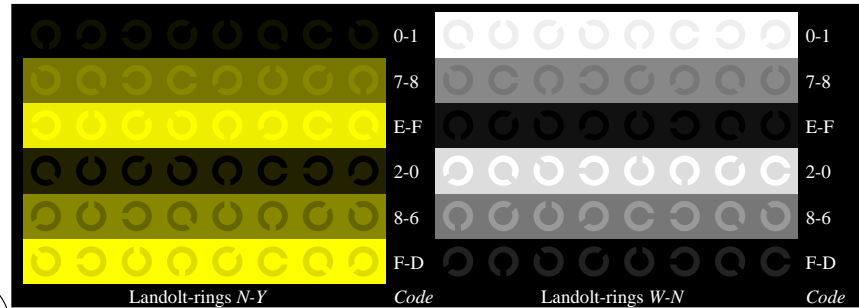
Ee070-1, Picture B4N: 16 equidistant steps N-C, N-M, N-Y, W-N; PS operator olv* setrgbcolor



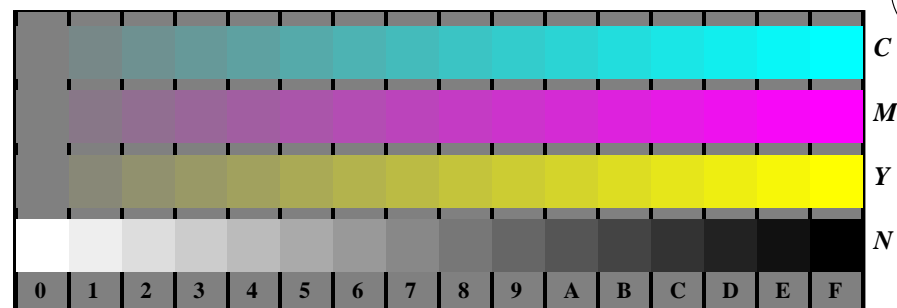
Ee070-3, Picture B5N: Script and Landolt-rings W, C, M, Y, Z; PS operator olv* setrgbcolor



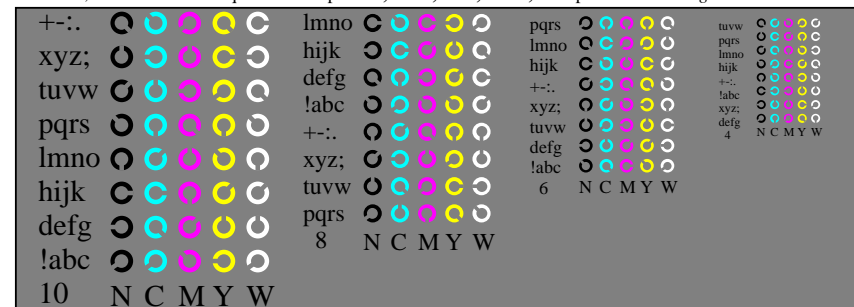
Ee070-5, Picture B6N: Landolt-rings N-C, N-M; PS operator olv* setrgbcolor



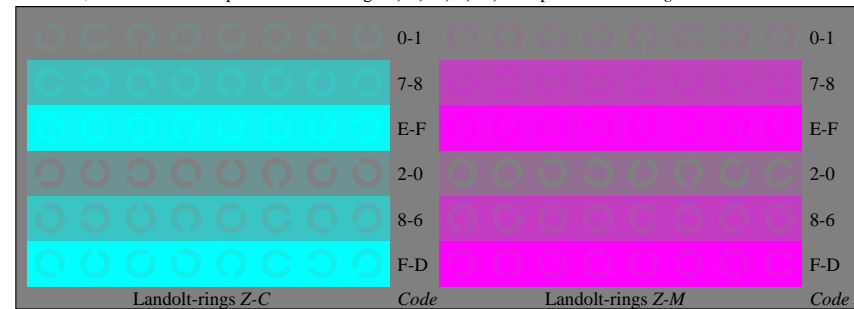
Ee070-7, Picture B7N: Landolt-rings N-Y, W-N; PS operator olv* setrgbcolor



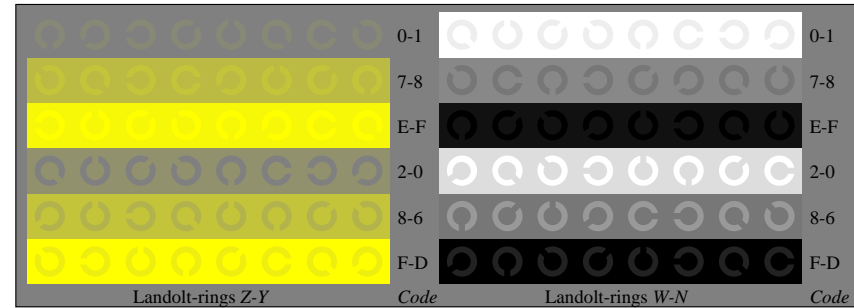
Ee071-1, Picture B4Z: 16 equidistant steps Z-C, Z-M, Z-Y, W-N; PS operator olv* setrgbcolor



Ee071-3, Picture B5Z: Script and Landolt-rings N, C, M, Y, W; PS operator olv* setrgbcolor



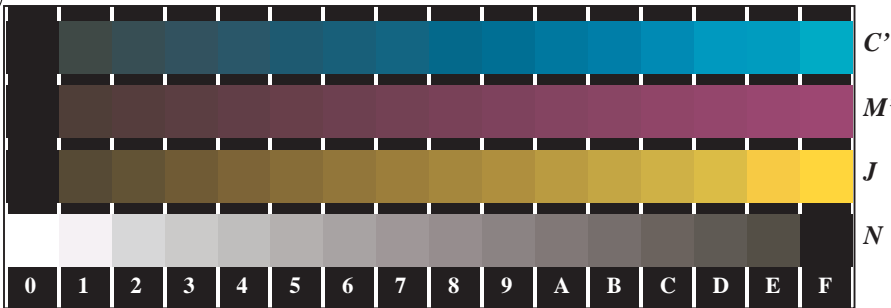
Ee071-5, Picture B6Z: Landolt-rings Z-C, Z-M; PS operator olv* setrgbcolor



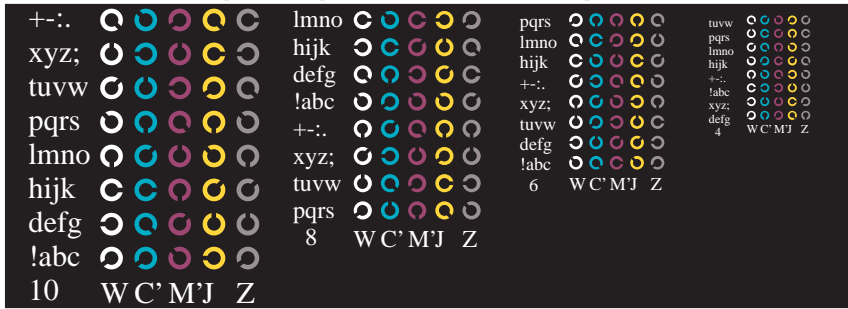
Ee071-7, Picture B7Z: Landolt-rings Z-Y, W-N; PS operator olv* setrgbcolor

See for similar files: <http://www.ps.bam.de/Fe05/>;
Technical information: <http://www.ps.bam.de>
Version 2.1, io=1,1, CIE LAB, ColSpX=1

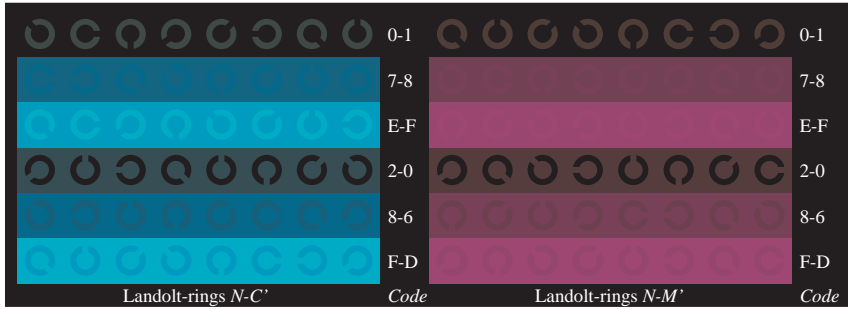
BAM registration: 20080901-Fe05/10L/L05E00FP.PS/ .PDF BAM material: code=rh4ta
 application for evaluation and measurement of printer or monitor systems



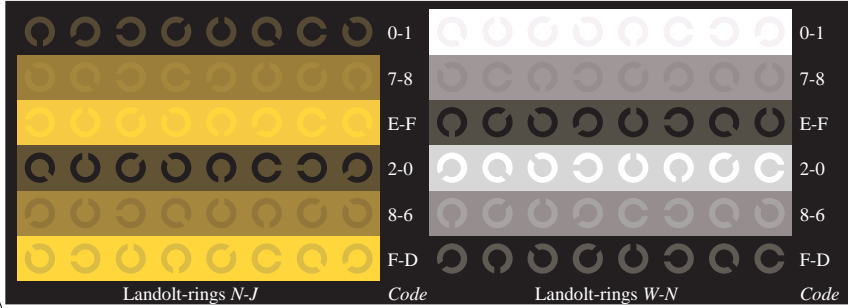
Ee070-1, Picture B4N: 16 equidistant steps $N-C'$, $N-M'$, $N-J$, $W-N$; PS operator $rgb^* setrgbcolor$



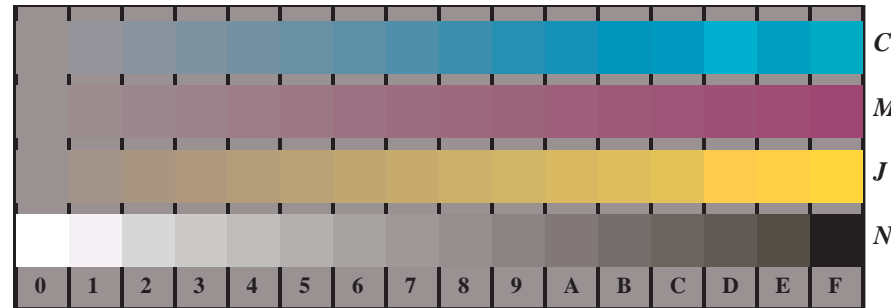
Ee070-3, Picture B5N: Script and Landolt-rings W, C', M', J, Z ; PS operator $rgb^* setrgbcolor$



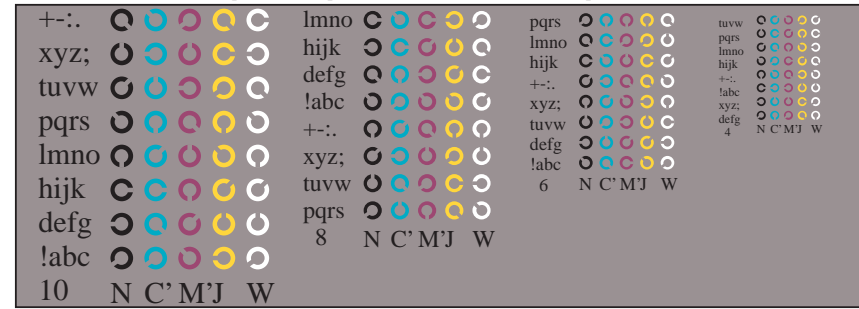
Ee070-5, Picture B6N: Landolt-rings $N-C'$, $N-M'$; PS operator $rgb^* setrgbcolor$



Ee070-7, Picture B7N: Landolt-rings $N-J, W-N$; PS operator $rgb^* setrgbcolor$



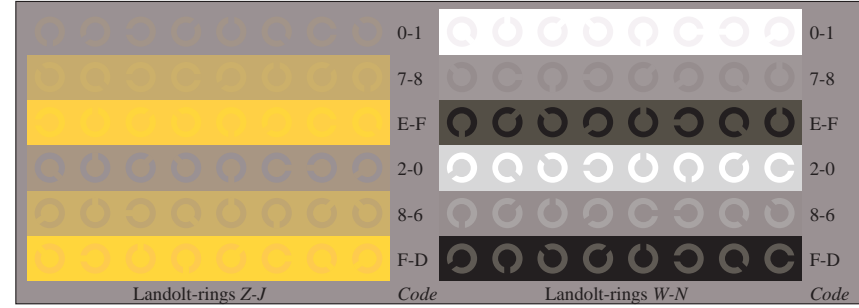
Ee071-1, Picture B4Z: 16 equidistant steps $Z-C'$, $Z-M'$, $Z-J$, $W-N$; PS operator $rgb^* setrgbcolor$



Ee071-3, Picture B5Z: Script and Landolt-rings N, C', M', J, W ; PS operator $rgb^* setrgbcolor$



Ee071-5, Picture B6Z: Landolt-rings $Z-C'$, $Z-M'$; PS operator $rgb^* setrgbcolor$

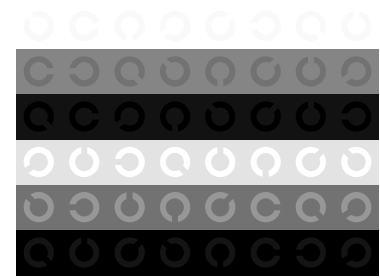
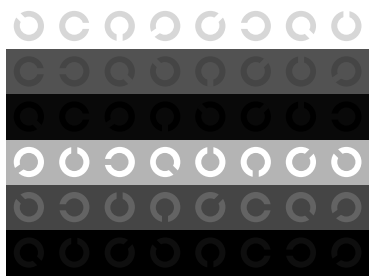
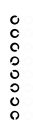
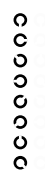
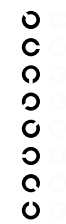
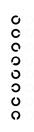
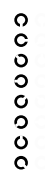
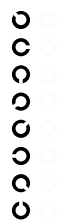


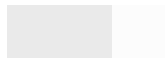
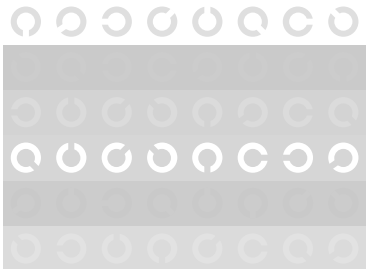
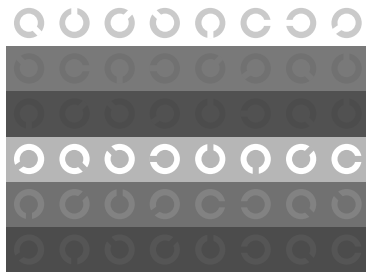
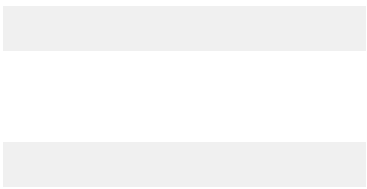
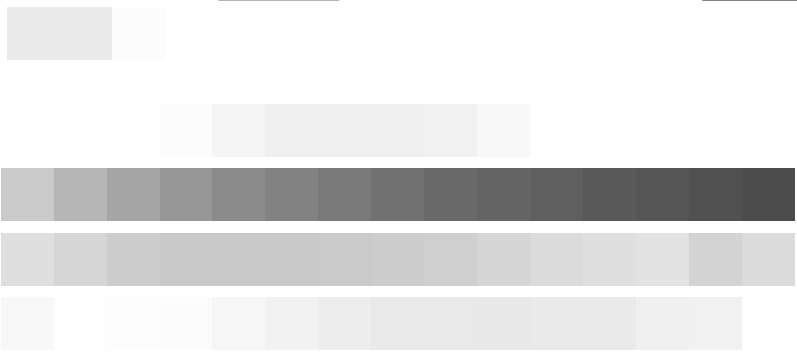
Ee071-7, Picture B7Z: Landolt-rings $Z-J, W-N$; PS operator $rgb^* setrgbcolor$

See for similar files: <http://www.ps.bam.de/Fe05/>;
 Technical information: <http://www.ps.bam.de>
 Version 2.1, io=1,1, CIE1LAB, ColSpX=1



c

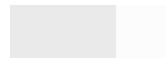
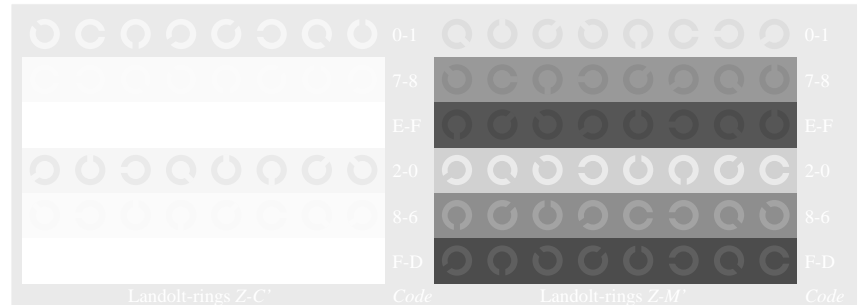


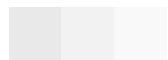
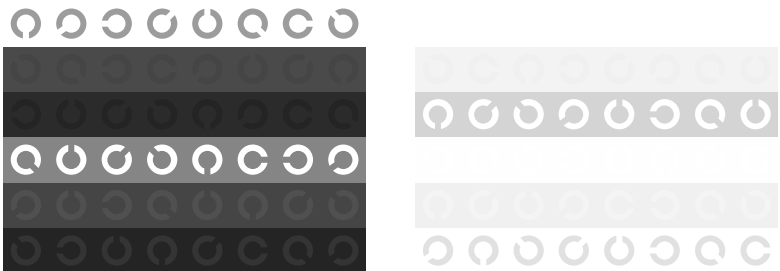
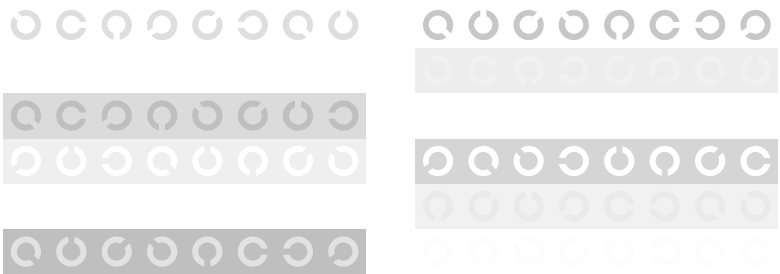
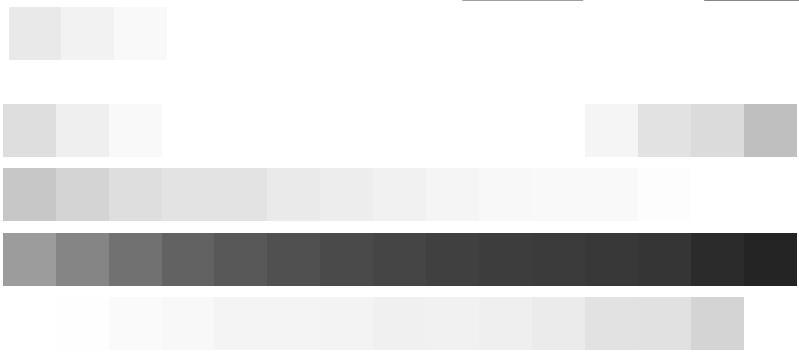


my



0 1 2 3 4 5 6 7 8 9 A B C D E F





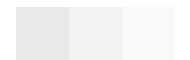
c y

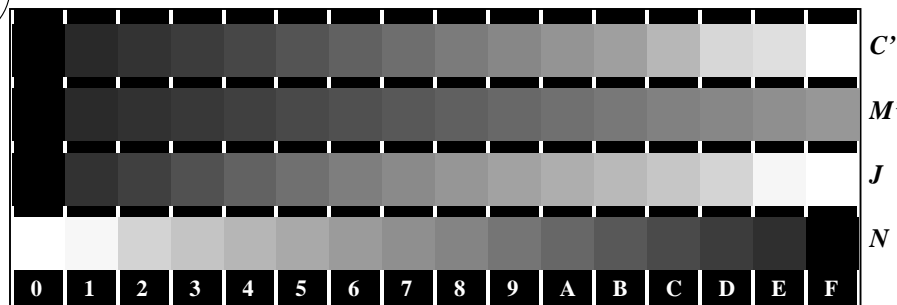


	0	1	2	3	4	5	6	7	8	9	A	B	C	D	E	F
+-.:	o	o	o	o	o	o	o	o	o	o	o	o	o	o	o	o
xyz;	o	o	o	o	o	o	o	o	o	o	o	o	o	o	o	o
tuvw	o	o	o	o	o	o	o	o	o	o	o	o	o	o	o	o
pqrs	o	o	o	o	o	o	o	o	o	o	o	o	o	o	o	o
lmno	o	o	o	o	o	o	o	o	o	o	o	o	o	o	o	o
hijk	o	o	o	o	o	o	o	o	o	o	o	o	o	o	o	o
defg	o	o	o	o	o	o	o	o	o	o	o	o	o	o	o	o
labc	o	o	o	o	o	o	o	o	o	o	o	o	o	o	o	o
10	o	o	o	o	o	o	o	o	o	o	o	o	o	o	o	o
	N	C	M	J	W											

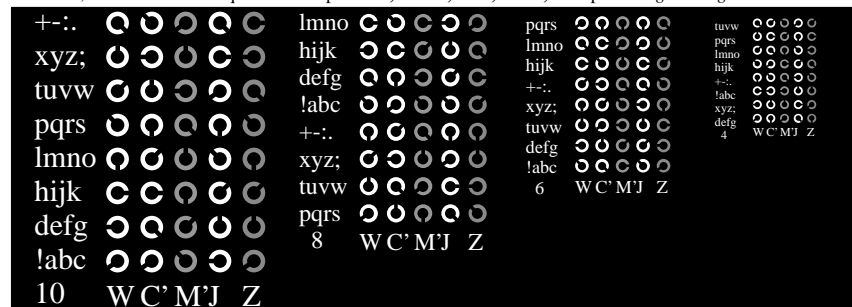
Landolt-rings Z-C'	Code	Landolt-rings Z-M'	Code
o o o o o o o o	0-1	o o o o o o o o	0-1
o o o o o o o o	7-8	o o o o o o o o	7-8
o o o o o o o o	E-F	o o o o o o o o	E-F
o o o o o o o o	2-0	o o o o o o o o	2-0
o o o o o o o o	8-6	o o o o o o o o	8-6
o o o o o o o o	F-D	o o o o o o o o	F-D

Landolt-rings Z-J	Code	Landolt-rings W-V	Code
o o o o o o o o	0-1	o o o o o o o o	0-1
o o o o o o o o	7-8	o o o o o o o o	7-8
o o o o o o o o	E-F	o o o o o o o o	E-F
o o o o o o o o	2-0	o o o o o o o o	2-0
o o o o o o o o	8-6	o o o o o o o o	8-6
o o o o o o o o	F-D	o o o o o o o o	F-D

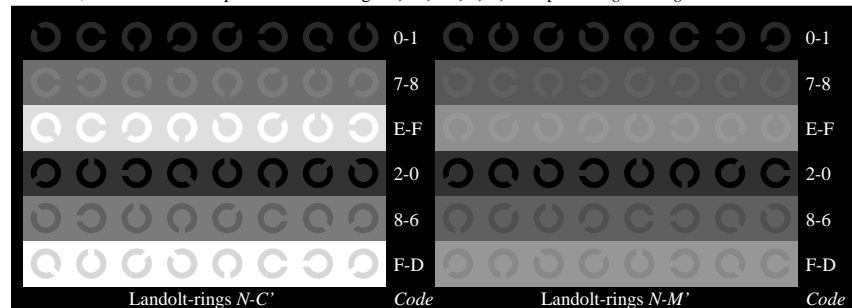




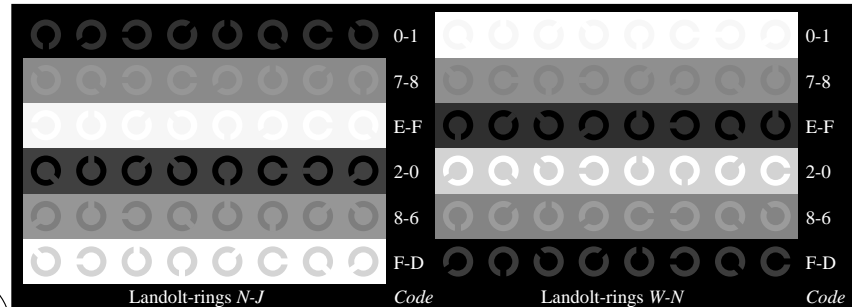
Ee070-1, Picture B4N: 16 equidistant steps $N-C'$, $N-M'$, $N-J$, $W-N$; PS operator $rgb^* setrgbcolor$



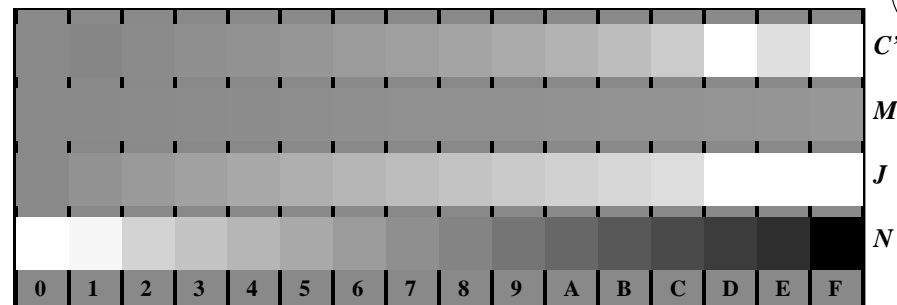
Ee070-3, Picture B5N: Script and Landolt-rings W , C' , M' , J , Z ; PS operator $rgb^* setrgbcolor$



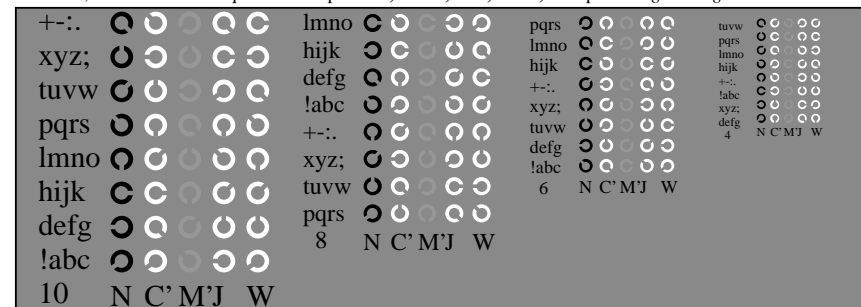
Ee070-5, Picture B6N: Landolt-rings $N-C'$, $N-M'$; PS operator $rgb^* setrgbcolor$



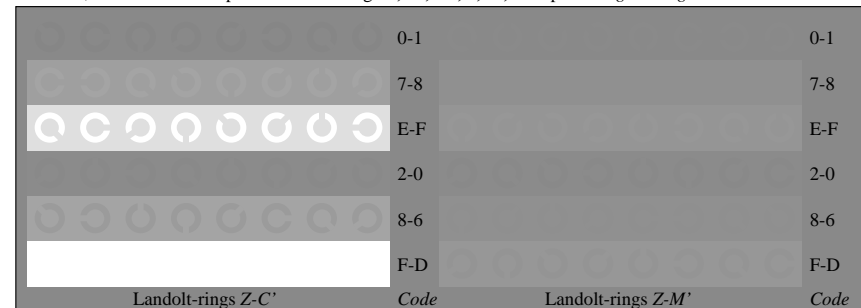
Ee070-7, Picture B7N: Landolt-rings $N-J$, $W-N$; PS operator $rgb^* setrgbcolor$



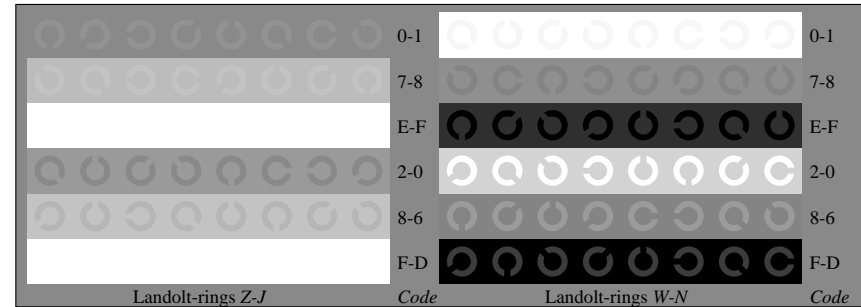
Ee071-1, Picture B4Z: 16 equidistant steps $Z-C'$, $Z-M'$, $Z-J$, $W-N$; PS operator $rgb^* setrgbcolor$



Ee071-3, Picture B5Z: Script and Landolt-rings N , C' , M' , J , W ; PS operator $rgb^* setrgbcolor$



Ee071-5, Picture B6Z: Landolt-rings $Z-C'$, $Z-M'$; PS operator $rgb^* setrgbcolor$



Ee071-7, Picture B7Z: Landolt-rings $Z-J$, $W-N$; PS operator $rgb^* setrgbcolor$

See for similar files: <http://www.ps.bam.de/Fe05/>;
 Technical information: <http://www.ps.bam.de>
 Version 2.1, io=1,1, CIE/LAB, ColSpX=1