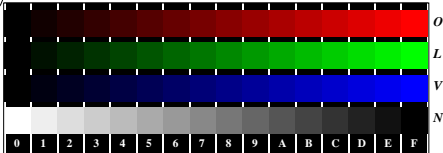


See for similar files: <http://www.ps.bam.de/Fe07/>; [www.ps.bam.de/FeHTM](http://www.ps.bam.de/FeHTM)  
 Technical information: <http://www.ps.bam.de>  
 Version 2.1, io=1,1, ColSpX=1

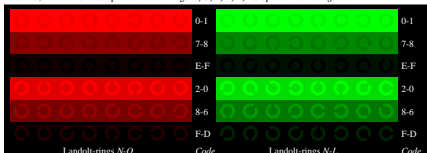
BAM registration: 20080901-Fe07/L07E00N1.PS/.TXT  
 application for evaluation and measurement of printer or monitor systems  
 BAM material: code=ha4ta



Ee070-1, Picture D4N: 16 equidistant steps N-O, N-L, N-V, W-N; PS operator olv\* setrgbcolor



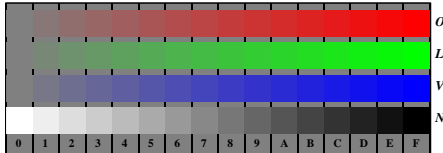
Ee070-3, Picture D5N: Script and Landolt-rings W, O, L, V, Z; PS operator olv\* setrgbcolor



Ee070-5, Picture D6N: Landolt-rings N-O, N-L; PS operator olv\* setrgbcolor



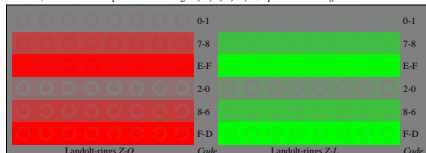
Ee070-7, Picture D7N: Landolt-rings N-V, W-N; PS operator olv\* setrgbcolor



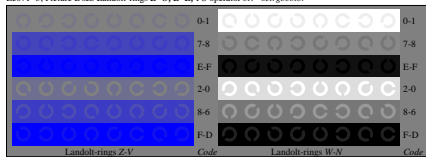
Ee071-1, Picture D4Z: 16 equidistant steps Z-O, Z-L, Z-V, W-N; PS operator olv\* setrgbcolor



Ee071-3, Picture D5Z: Script and Landolt-rings N, O, L, V, W; PS operator olv\* setrgbcolor



Ee071-5, Picture D6Z: Landolt-rings Z-O, Z-L; PS operator olv\* setrgbcolor



Ee071-7, Picture D7Z: Landolt-rings Z-V, W-N; PS operator olv\* setrgbcolor

Fe07; Test chart of ISO/IEC 15775 and ISO/IEC TR 24705  
 Fig. D4 to D7 similar ISO/IEC-test chart 4, olv\* interpretation  
 input: rgb->olv\* setrgbcolor  
 output: no change compared to input