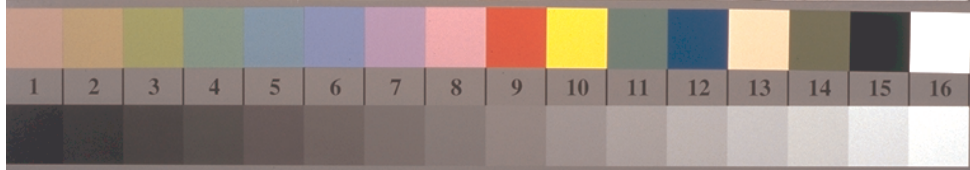
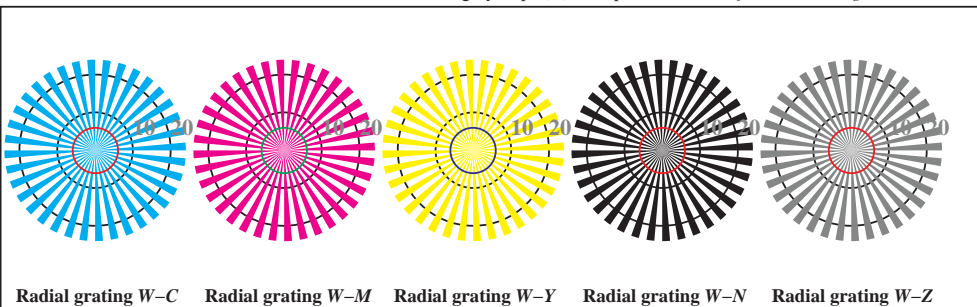


image pixel: 192 x 128
 384 x 256
 768 x 512
 1536 x 1024
 3072 x 2048

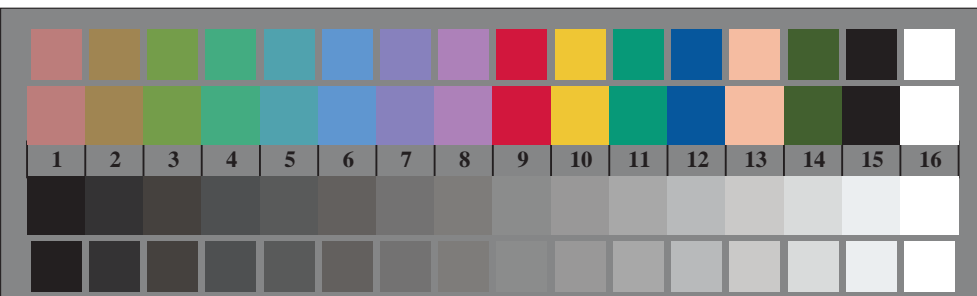


Fe490-3, Picture B1: Flower motif, 14 CIE-test colours, 16 grey steps (sf); PS operators *settransfer*, 4 *colorimage*



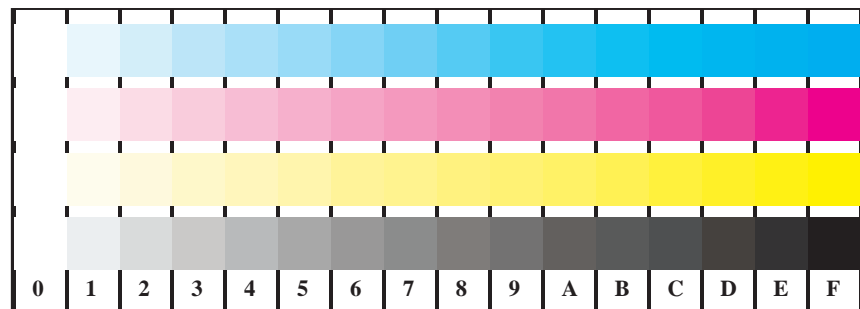
Radial grating W-C Radial grating W-M Radial grating W-Y Radial grating W-N Radial grating W-Z

Fe491-5, Picture B2: Radial gratings W-C, W-M, W-Y, W-N, W-Z; PS operator *olv* setrgbcolor*

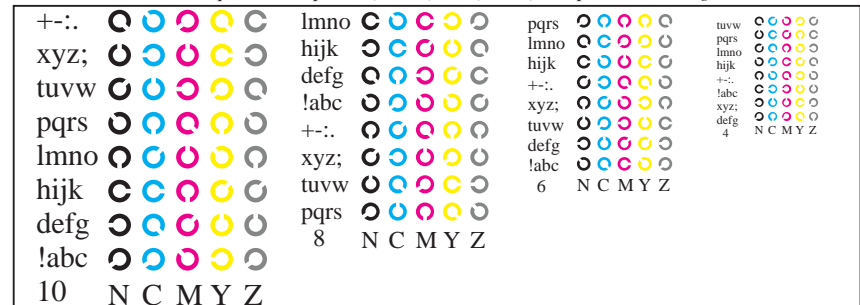


Fe490-7, Picture B3: 14 CIE-test colours and 2 + 16 grey steps; Use of PS operator *olv* setrgbcolor*

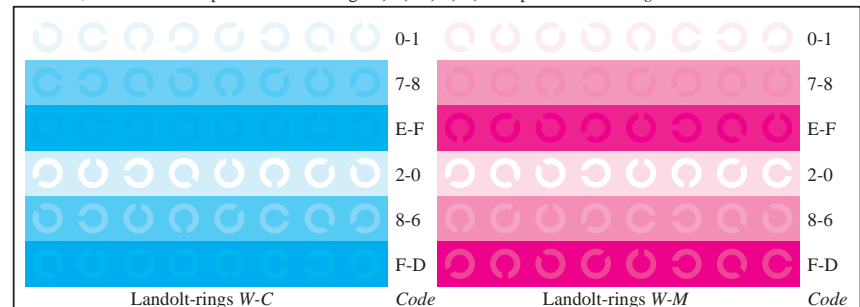
Fe49-1; Test elements of ISO/IEC 15775 and ISO/IEC TR 24705
 Fig. B1 to B7 similar ISO/IEC-Test chart 2, *olv** interpretation



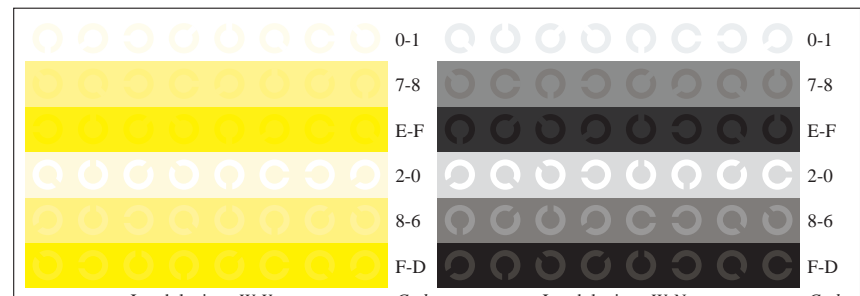
Fe491-1, Picture B4: 16 equidistant steps W-C, W-M, W-Y, W-N; PS operator *olv* setrgbcolor*



Fe491-3, Picture B5: Script and Landolt-rings N, C, M, Y, Z; PS operator *olv* setrgbcolor*



Fe491-5, Picture B6: Landolt-rings W-C, W-M; PS operator *olv* setrgbcolor*



Fe491-7, Picture B7: Landolt-rings W-Y, W-N; PS operator *olv* setrgbcolor*

input: *rgb*->*olv* setrgbcolor*
 output: ->*LAB**->*cmyn6* setcmyk*

See for similar files: <http://www.ps.bam.de/Fe49/>; [www.ps.bam.de/Fe49/Version 2.1, io=1,1, CIELAB, ColSpX=1](http://www.ps.bam.de/Fe49/Version%202.1,io=1,1,CIELAB,ColSpX=1)

Technical information: <http://www.ps.bam.de>

Fe49-1, *olv**

BAM registration: 20081001-Fe49/10L/L49e00FP.PS/ .PDF
 application for evaluation and measurement of printer or monitor systems
 BAM material: code=rh4ta