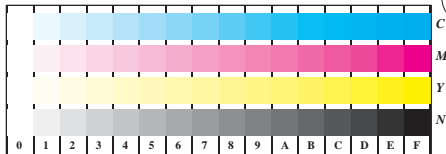


image pixel: 192 x 128
 384 x 256
 768 x 512
 1536 x 1024
 3072 x 2048



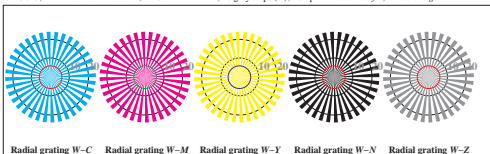
Fe490-3, Picture B1: Flower motif, 14 CIE-test colours, 16 grey steps (st); PS operators *settransfer*, 4 colorimage



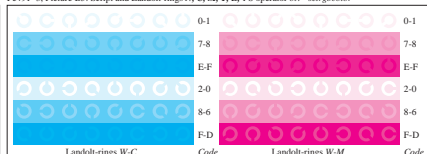
Fe491-1, Picture B4: 16 equidistant steps W-C, W-M, W-Y, W-N; PS operator *olv* setrgbcolor*



Fe491-3, Picture B5: Script and Landolt-rings N, C, M, Y, Z; PS operator *olv* setrgbcolor*



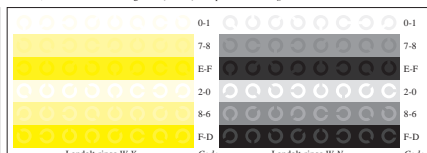
Fe491-5, Picture B2: Radial gratings W-C, W-M, W-Y, W-N, W-Z; PS operator *olv* setrgbcolor*



Fe491-5, Picture B6: Landolt-rings W-C, W-M; PS operator *olv* setrgbcolor*



Fe490-7, Picture B3: 14 CIE-test colours and 2 + 16 grey steps; Use of PS operator *olv* setrgbcolor*



Fe491-7, Picture B7: Landolt-rings W-Y, W-N; PS operator *olv* setrgbcolor*

Fe49-1; Test elements of ISO/IEC 15775 and ISO/IEC TR 24705
 Fig. B1 to B7 similar ISO/IEC-Test chart 2, *olv** interpretation
 input: *rgb->olv* setrgbcolor*
 output: *olv*->cmyn6* setcmyn6*