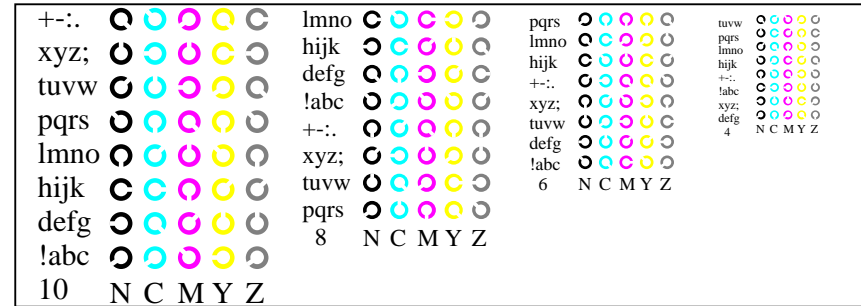
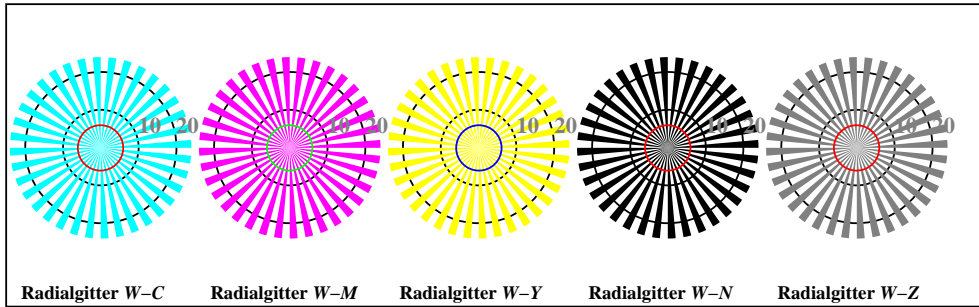


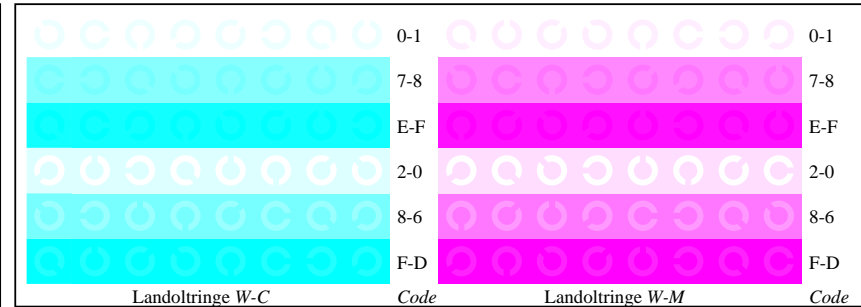
Fg001-1, Bild B4: 16 gleichabständige Stufen W-C, W-M, W-Y, W-N; PS-Operator olv* setrgbcolor



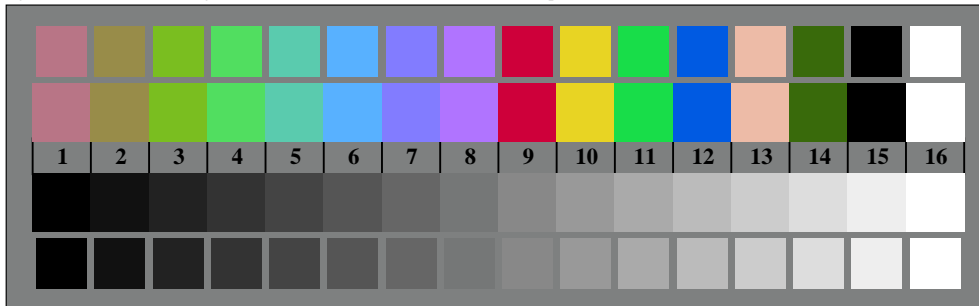
Fg001-3, Bild B5: Schrift und Landoltringe N, C, M, Y, Z; PS-Operator olv* setrgbcolor



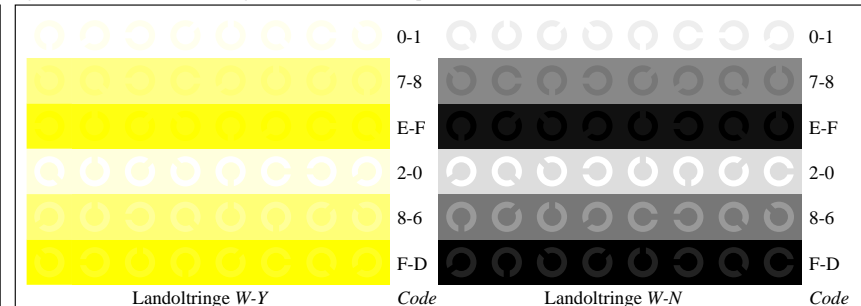
Fg000-5, Bild B2: Radialgitter W-C, W-M, W-Y, W-N, W-Z; PS-Operator olv* setrgbcolor



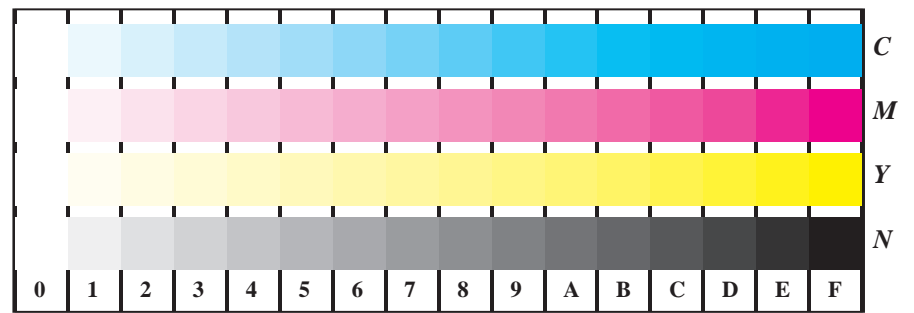
Fg001-5, Bild B6: Landoltringe W-C, W-M; PS-Operator olv* setrgbcolor



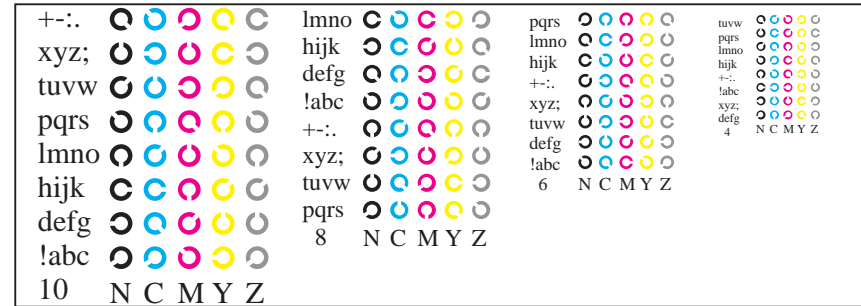
Fg000-7, Bild B3: 14 CIE-Prüffarben sowie 2 + 16 Graustufen; PS-Operator olv* setrgbcolor



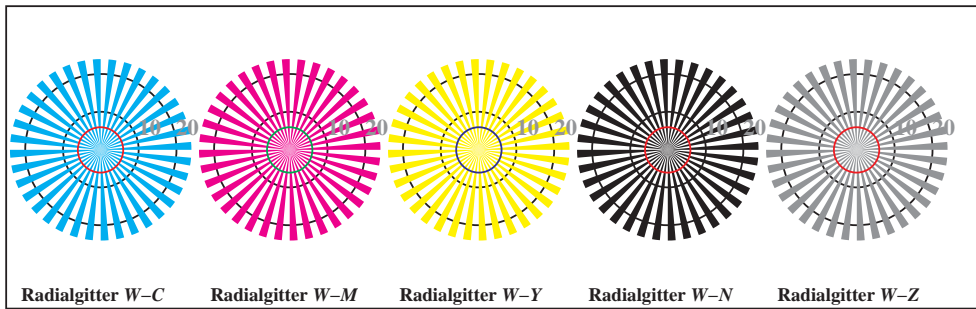
Fg001-7, Bild B7: Landoltringe W-Y, W-N; PS-Operator olv* setrgbcolor



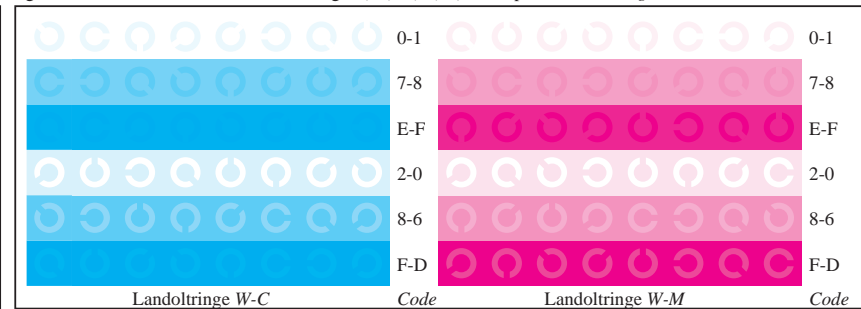
Fg001-1, Bild B4: 16 gleichabständige Stufen W-C, W-M, W-Y, W-N; PS-Operator olv* setrgbcolor



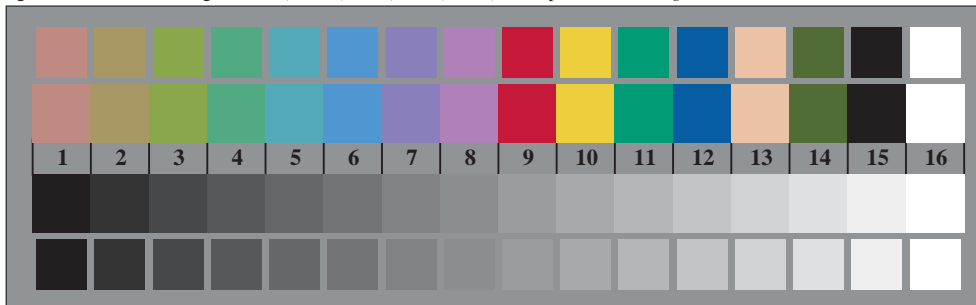
Fg001-3, Bild B5: Schrift und Landoltringe N, C, M, Y, Z; PS-Operator olv* setrgbcolor



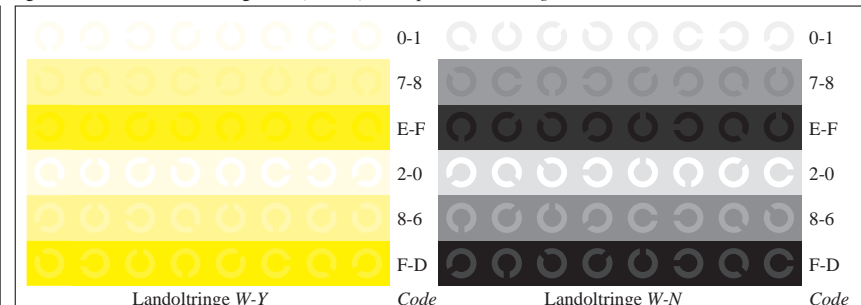
Fg000-5, Bild B2: Radialgitter W-C, W-M, W-Y, W-N, W-Z; PS-Operator olv* setrgbcolor



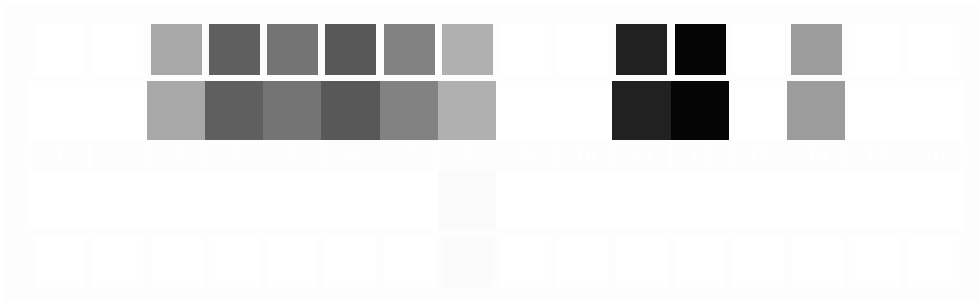
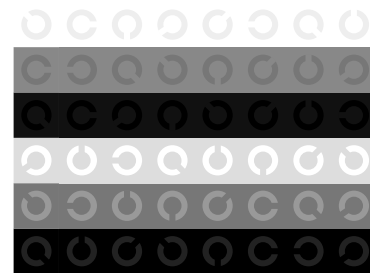
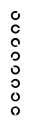
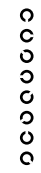
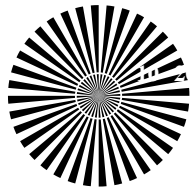
Fg001-5, Bild B6: Landoltringe W-C, W-M; PS-Operator olv* setrgbcolor

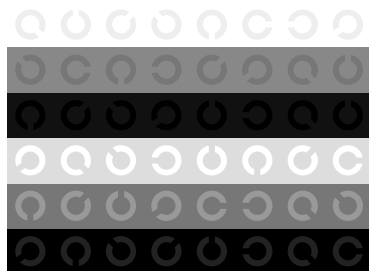
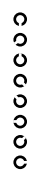
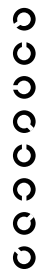
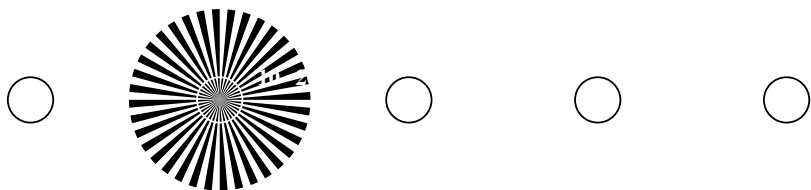


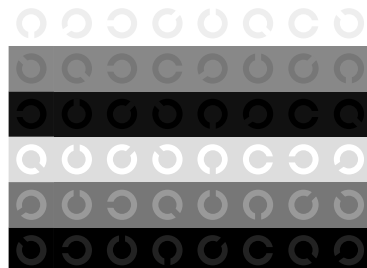
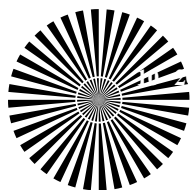
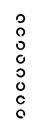
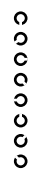
Fg000-7, Bild B3: 14 CIE-Prüffarben sowie 2 + 16 Graustufen; PS-Operator olv* setrgbcolor

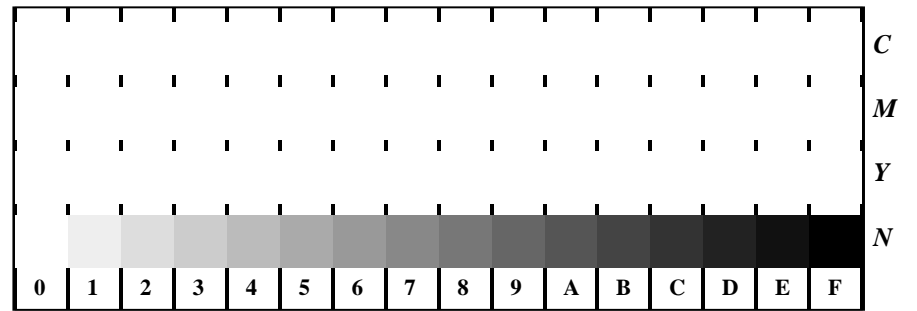


Fg001-7, Bild B7: Landoltringe W-Y, W-N; PS-Operator olv* setrgbcolor

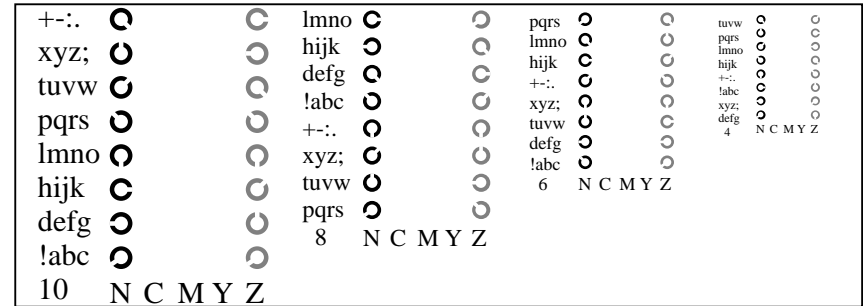




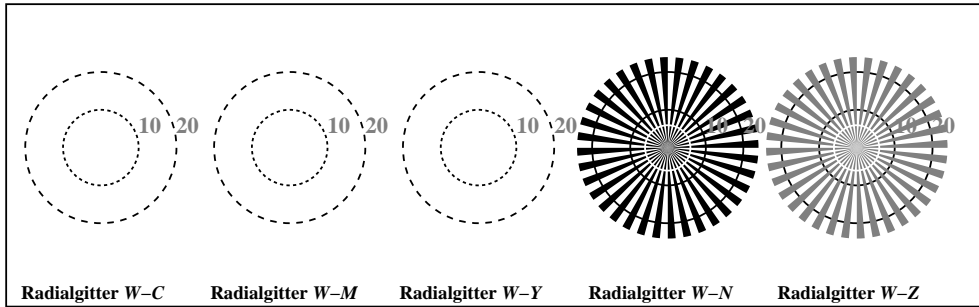




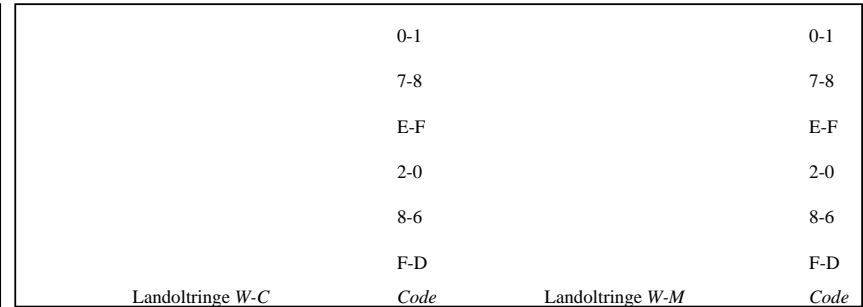
Fg001-1, Bild B4: 16 gleichabständige Stufen W-C, W-M, W-Y, W-N; PS-Operator *olv* setrgbcolor*



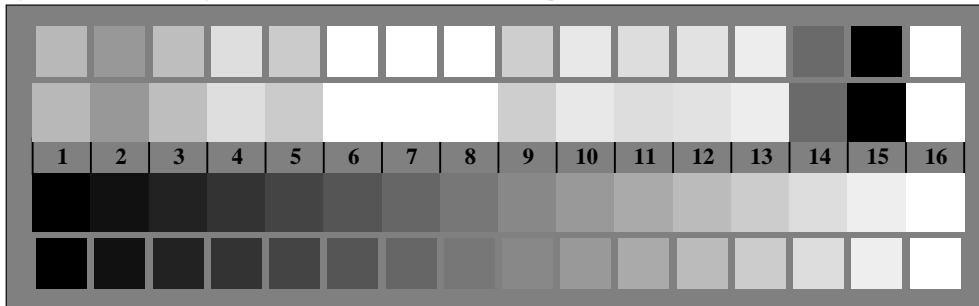
Fg001-3, Bild B5: Schrift und Landoltringe N, C, M, Y, Z; PS-Operator *olv* setrgbcolor*



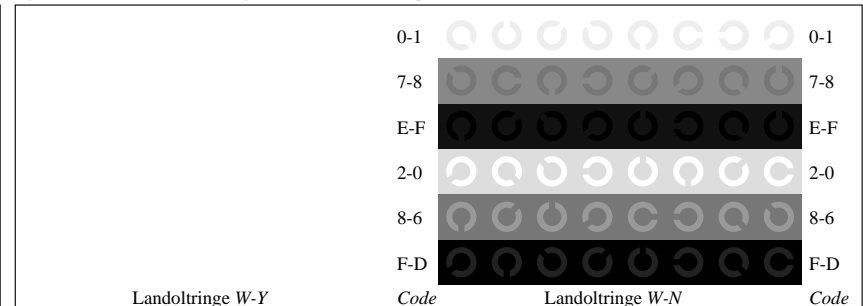
Fg000-5, Bild B2: Radialgitter W-C, W-M, W-Y, W-N, W-Z; PS-Operator *olv* setrgbcolor*



Fg001-5, Bild B6: Landoltringe W-C, W-M; PS-Operator *olv* setrgbcolor*



Fg000-7, Bild B3: 14 CIE-Prüffarben sowie 2 + 16 Graustufen; PS-Operator *olv* setrgbcolor*



Fg001-7, Bild B7: Landoltringe W-Y, W-N; PS-Operator *olv* setrgbcolor*