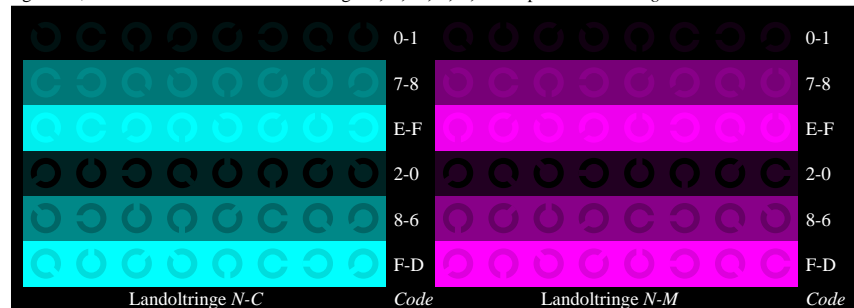


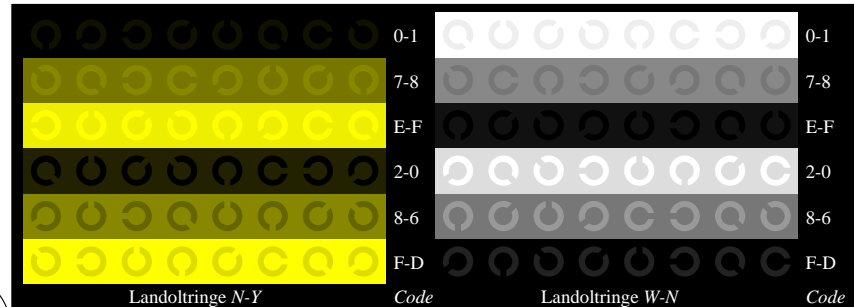
Fg010-1, Bild B4N: 16 gleichabständige Stufen N-C, N-M, N-Y, W-N; PS-Operator olv* setrgbcolor



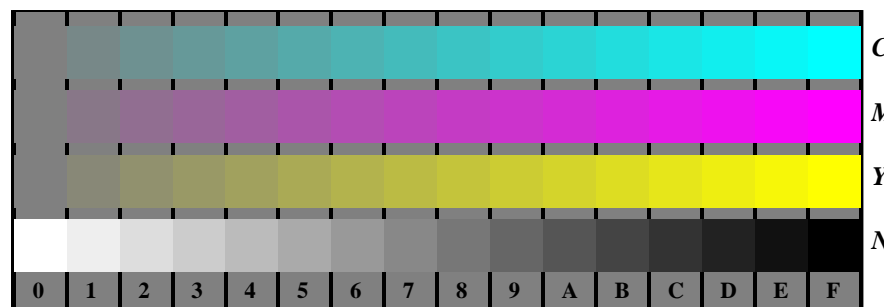
Fg010-3, Bild B5N: Schrift und Landoltringe W, C, M, Y, Z; PS-Operator olv* setrgbcolor



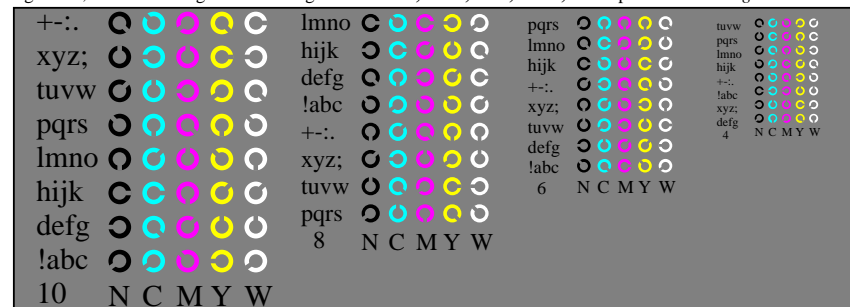
Fg010-5, Bild B6N: Landoltringe N-C, N-M; PS-Operator olv* setrgbcolor



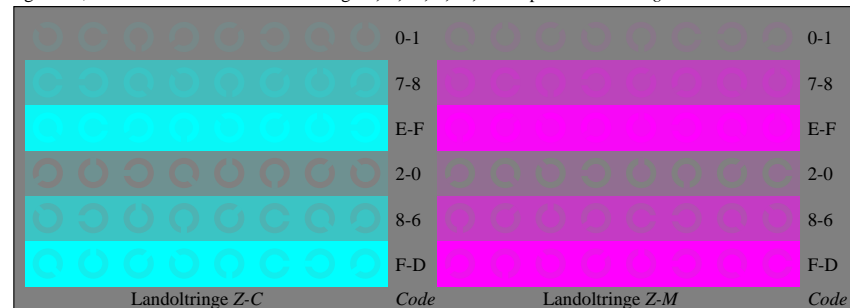
Fg010-7, Bild B7N: Landoltringe N-Y, W-N; PS-Operator olv* setrgbcolor



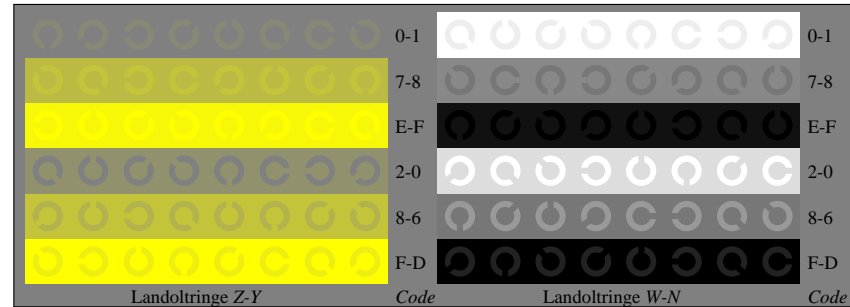
Fg011-1, Bild B4Z: 16 gleichabständige Stufen Z-C, Z-M, Z-Y, W-N; PS-Operator olv* setrgbcolor



Fg011-3, Bild B5Z: Schrift und Landoltringe N, C, M, Y, W; PS-Operator olv* setrgbcolor



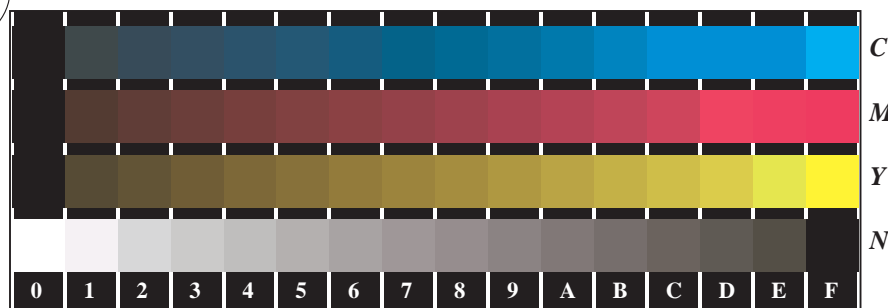
Fg011-5, Bild B6Z: Landoltringe Z-C, Z-M; PS-Operator olv* setrgbcolor



Fg011-7, Bild B7Z: Landoltringe Z-Y, W-N; PS-Operator olv* setrgbcolor

Siehe ähnliche Dateien: <http://www.ps.bam.de/Fg01/>; www.ps.bam.de/Version.2.1,io=1,1,CIELAB,ColSpX=1

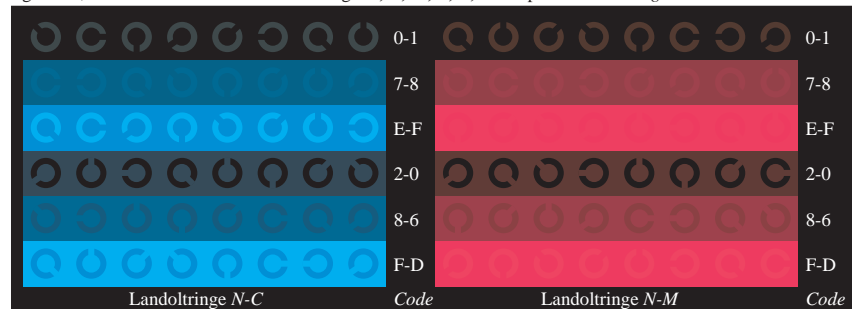
Technische Information: <http://www.ps.bam.de>



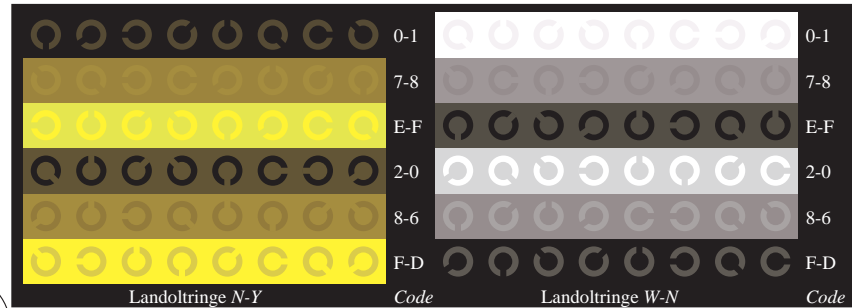
Fg010-1, Bild B4N: 16 gleichabständige Stufen N-C, N-M, N-Y, W-N; PS-Operator *olv* setrgbcolor*



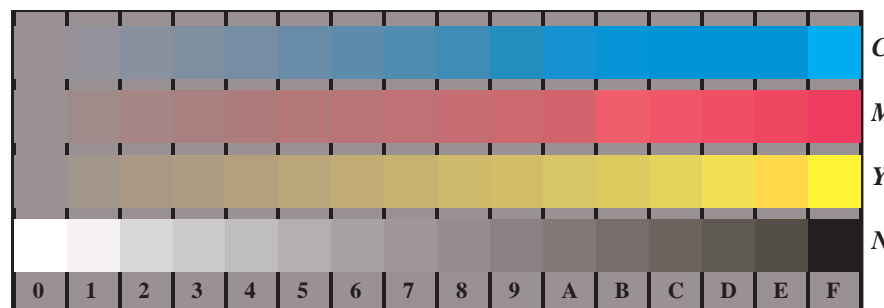
Fg010-3, Bild B5N: Schrift und Landoltringe W, C, M, Y, Z; PS-Operator *olv* setrgbcolor*



Fg010-5, Bild B6N: Landoltringe N-C, N-M; PS-Operator *olv* setrgbcolor*



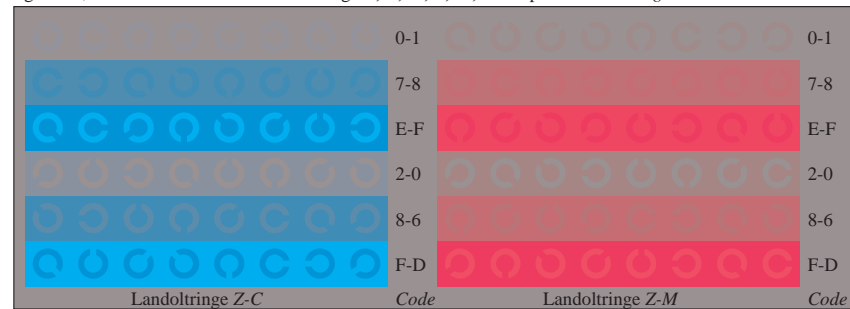
Fg010-7, Bild B7N: Landoltringe N-Y, W-N; PS-Operator *olv* setrgbcolor*



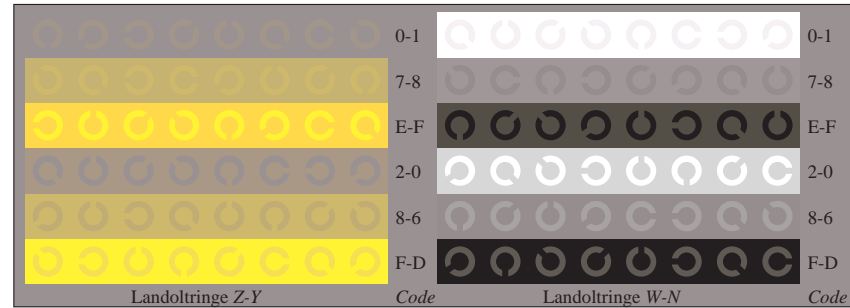
Fg011-1, Bild B4Z: 16 gleichabständige Stufen Z-C, Z-M, Z-Y, W-N; PS-Operator *olv* setrgbcolor*



Fg011-3, Bild B5Z: Schrift und Landoltringe N, C, M, Y, W; PS-Operator *olv* setrgbcolor*



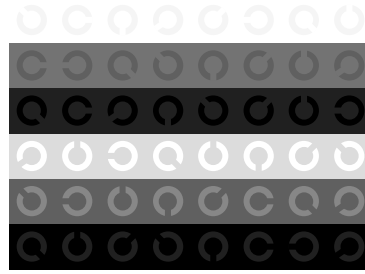
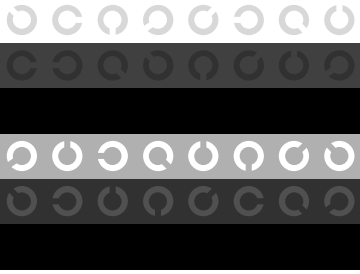
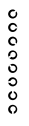
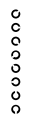
Fg011-5, Bild B6Z: Landoltringe Z-C, Z-M; PS-Operator *olv* setrgbcolor*



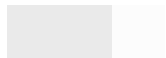
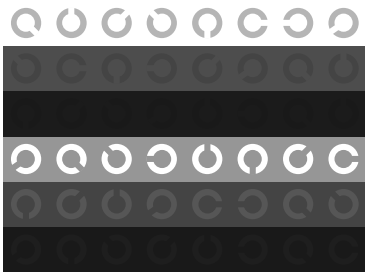
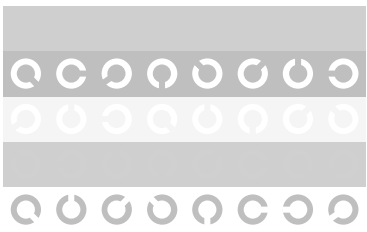
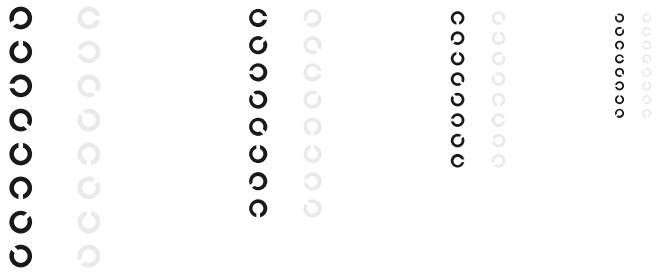
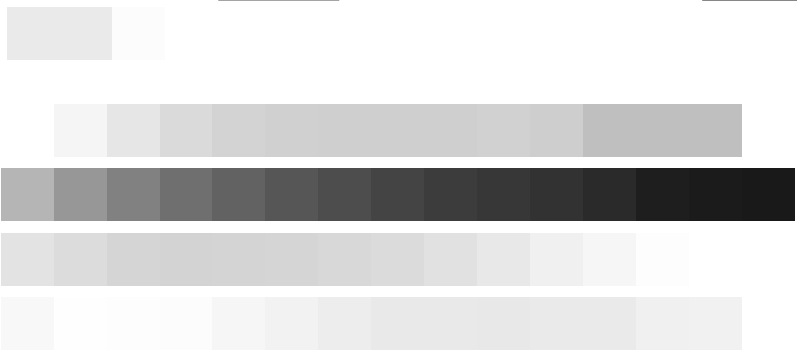
Fg011-7, Bild B7Z: Landoltringe Z-Y, W-N; PS-Operator *olv* setrgbcolor*

Siehe ähnliche Dateien: <http://www.ps.bam.de/Fg01/>; [http://www.ps.bam.de/Version 2.1, io=1,1, CIELAB, ColSpX=1](http://www.ps.bam.de/Version%201.1,CIELAB,ColSpX=1)

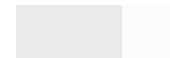
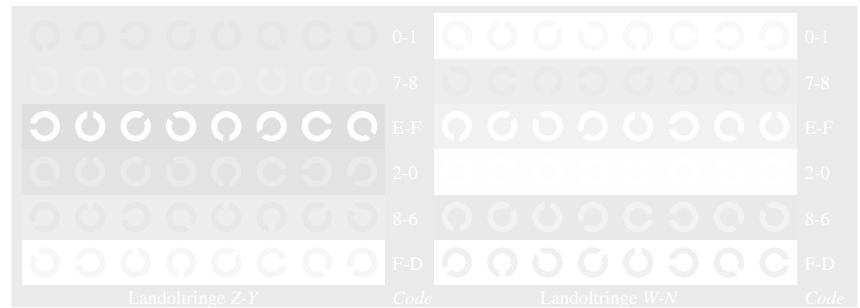
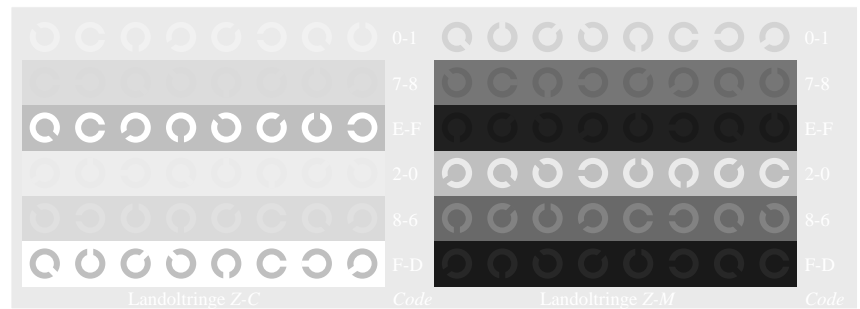
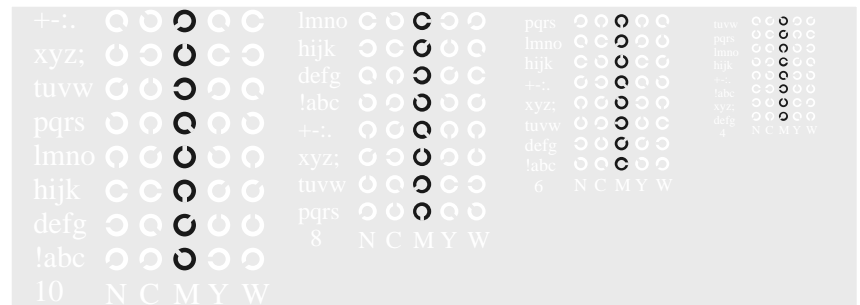
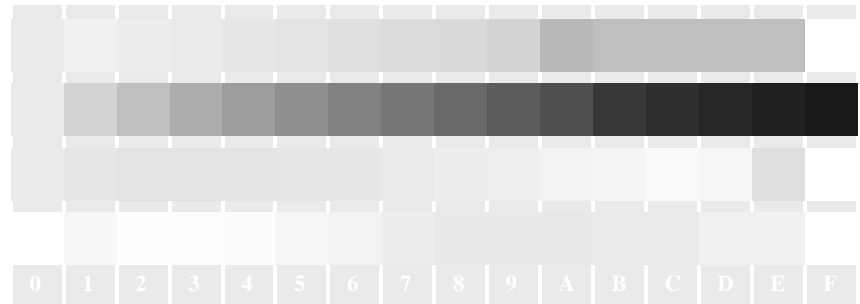
c

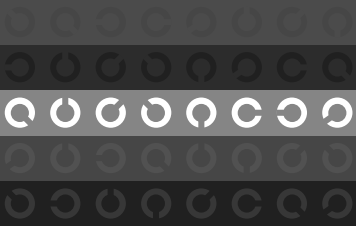
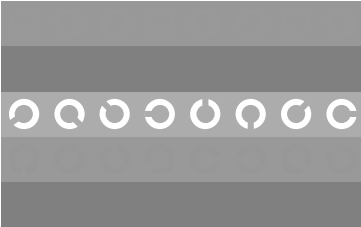
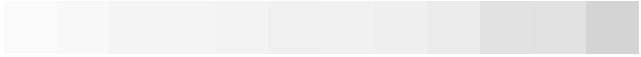


© 2000-2001



m

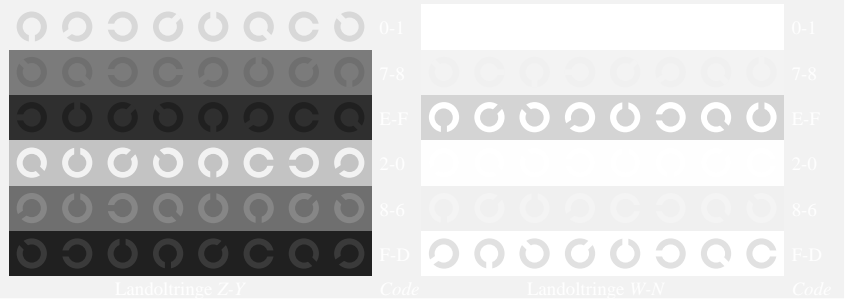
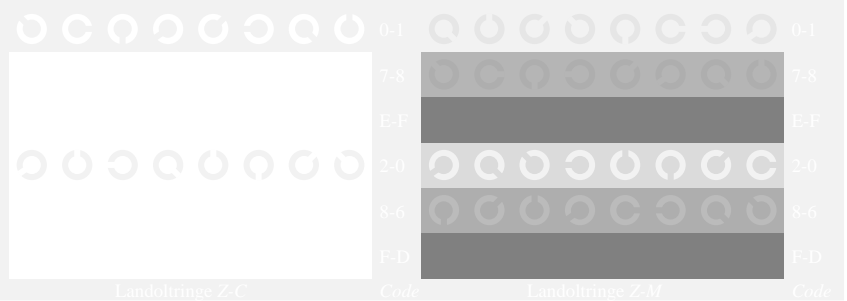




my

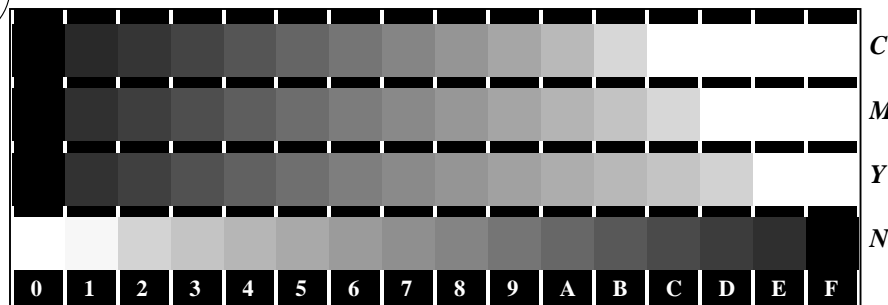


0 1 2 3 4 5 6 7 8 9 A B C D E F

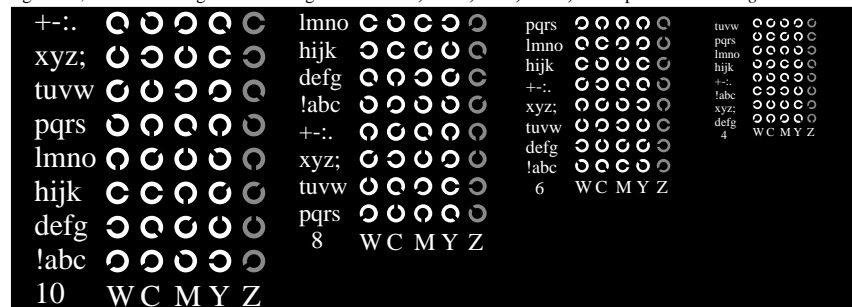


Siehe ähnliche Dateien: <http://www.ps.bam.de/Fg01/>; [www.ps.bam.de/Version 2.1, io=1,1, CIELAB, ColSpX=1](http://www.ps.bam.de/Version2.1,io=1,1,CIELAB,ColSpX=1)

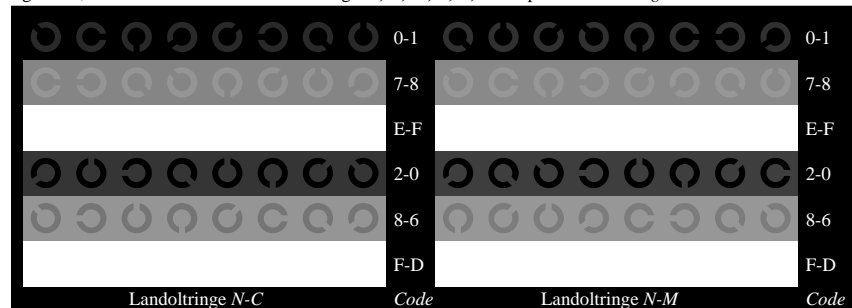
BAM-Registrierung: 20080901-Fg01/10L/L01G00FP.PS/ .PDF BAM-Material: Code=rh4ta
 Anwendung für Beurteilung und Messung von Drucker- oder Monitorsystemen



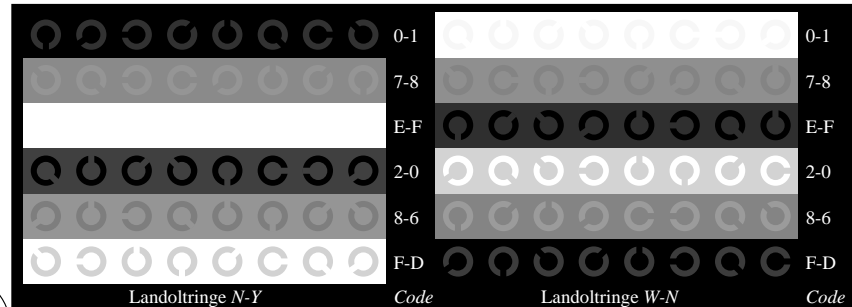
Fg010-1, Bild B4N: 16 gleichabständige Stufen N-C, N-M, N-Y, W-N; PS-Operator *olv* setrgbcolor*



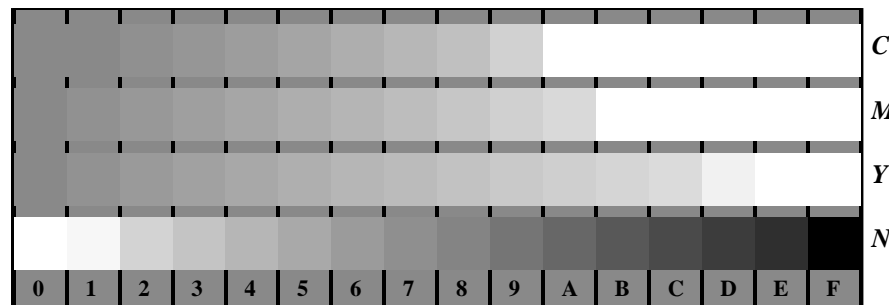
Fg010-3, Bild B5N: Schrift und Landoltringe W, C, M, Y, Z; PS-Operator *olv* setrgbcolor*



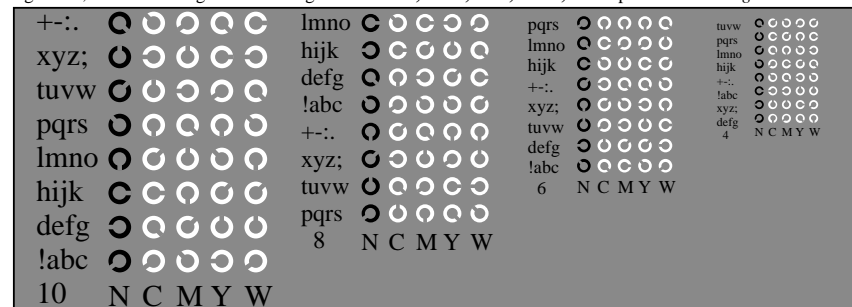
Fg010-5, Bild B6N: Landoltringe N-C, N-M; PS-Operator *olv* setrgbcolor*



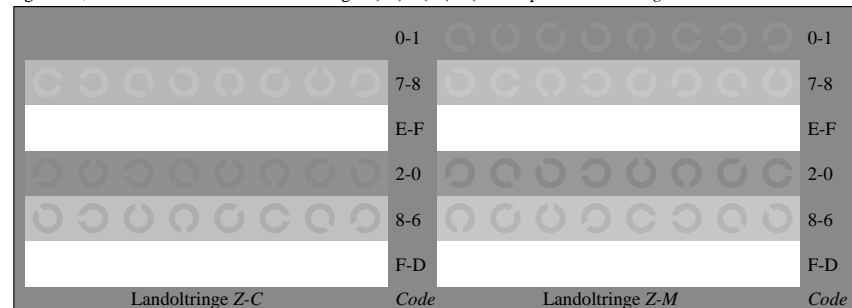
Fg010-7, Bild B7N: Landoltringe N-Y, W-N; PS-Operator *olv* setrgbcolor*



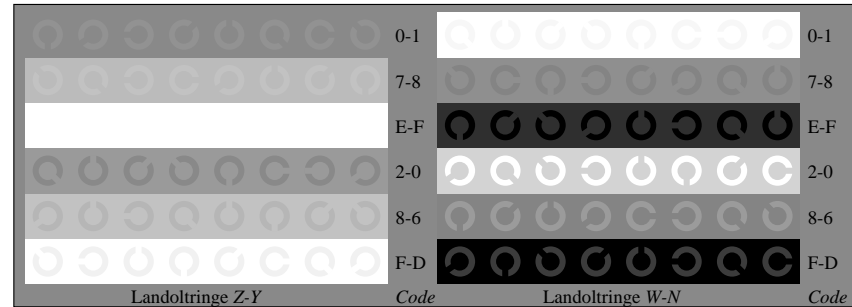
Fg011-1, Bild B4Z: 16 gleichabständige Stufen Z-C, Z-M, Z-Y, W-N; PS-Operator *olv* setrgbcolor*



Fg011-3, Bild B5Z: Schrift und Landoltringe N, C, M, Y, W; PS-Operator *olv* setrgbcolor*



Fg011-5, Bild B6Z: Landoltringe Z-C, Z-M; PS-Operator *olv* setrgbcolor*



Fg011-7, Bild B7Z: Landoltringe Z-Y, W-N; PS-Operator *olv* setrgbcolor*