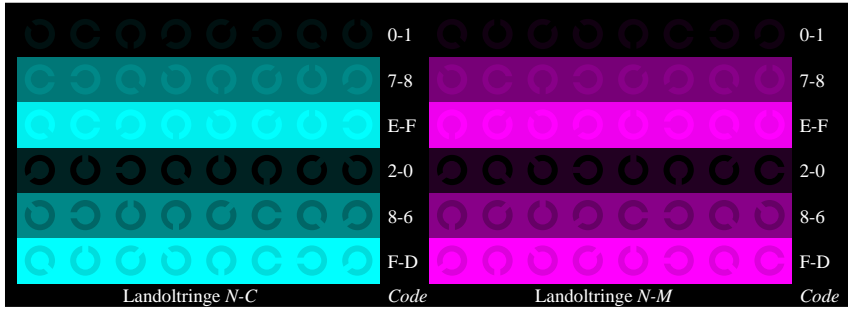


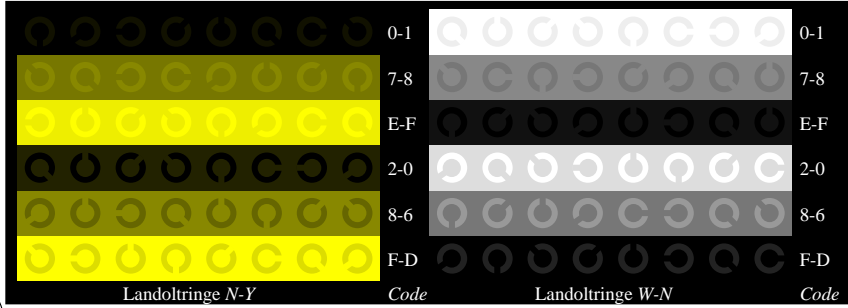
Fg010-1, Bild B4N: 16 gleichabständige Stufen N-C, N-M, N-Y, W-N; PS-Operator *olv* setrgbcolor*



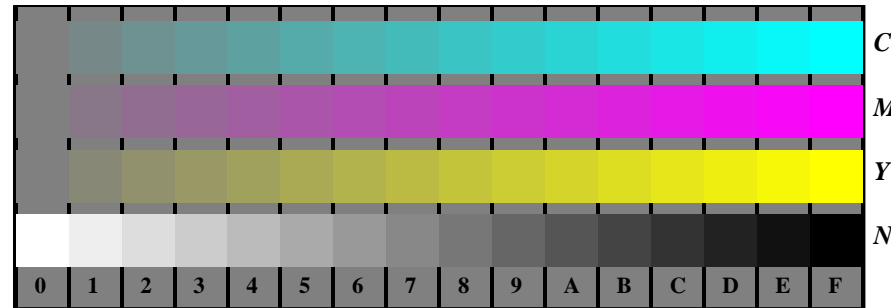
Fg010-3, Bild B5N: Schrift und Landoltringe W, C, M, Y, Z; PS-Operator *olv* setrgbcolor*



Fg010-5, Bild B6N: Landoltringe N-C, N-M; PS-Operator *olv* setrgbcolor*



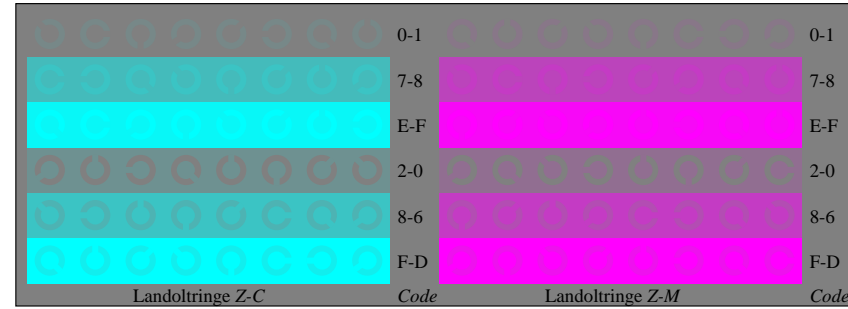
Fg010-7, Bild B7N: Landoltringe N-Y, W-N; PS-Operator *olv* setrgbcolor*



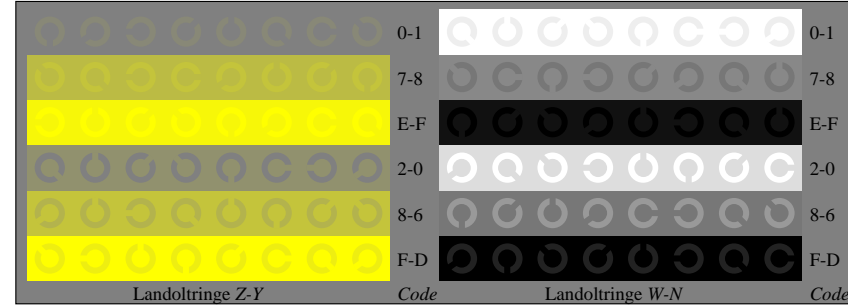
Fg011-1, Bild B4Z: 16 gleichabständige Stufen Z-C, Z-M, Z-Y, W-N; PS-Operator *olv* setrgbcolor*



Fg011-3, Bild B5Z: Schrift und Landoltringe N, C, M, Y, W; PS-Operator *olv* setrgbcolor*

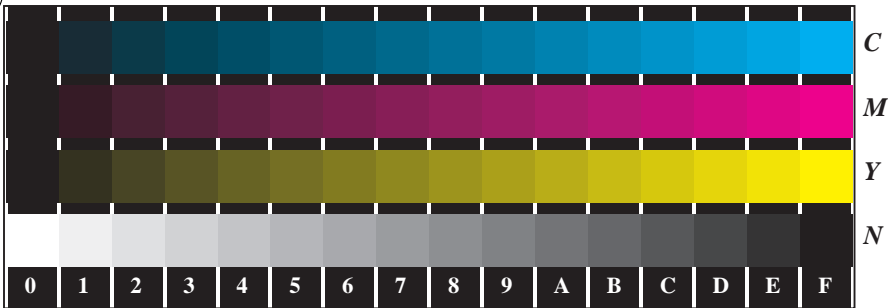


Fg011-5, Bild B6Z: Landoltringe Z-C, Z-M; PS-Operator *olv* setrgbcolor*

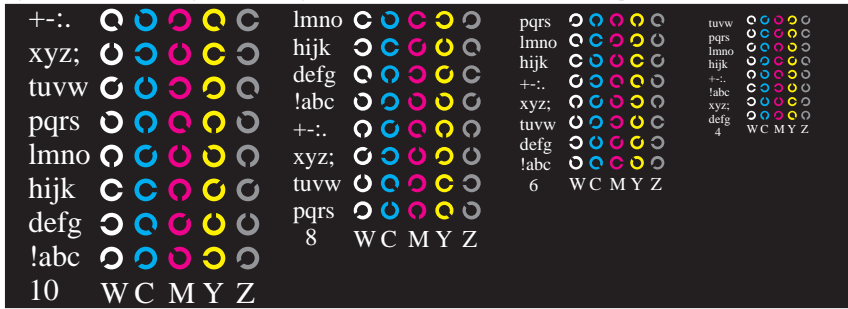


Fg011-7, Bild B7Z: Landoltringe Z-Y, W-N; PS-Operator *olv* setrgbcolor*

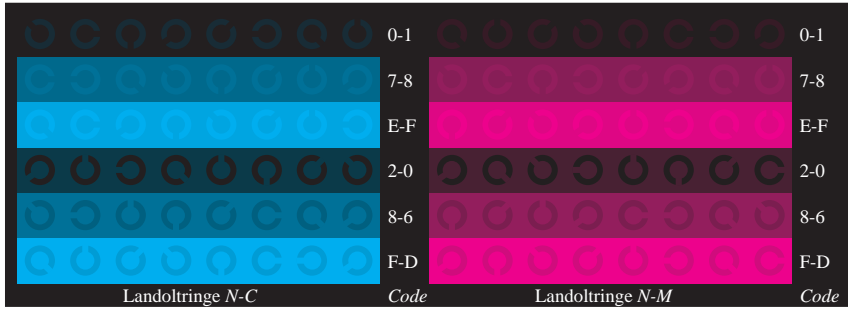
Siehe ähnliche Dateien: <http://www.ps.bam.de/Fg01/>; www.ps.bam.de/Version.2.1,io=1,1,Colspx=1
 Technische Information: <http://www.ps.bam.de>



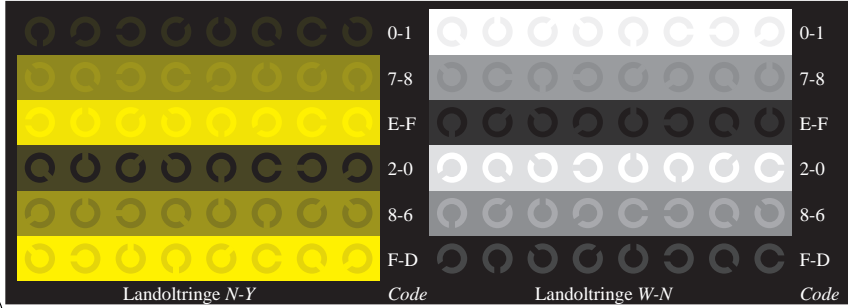
Fg010-1, Bild B4N: 16 gleichabständige Stufen N-C, N-M, N-Y, W-N; PS-Operator olv* setrgbcolor



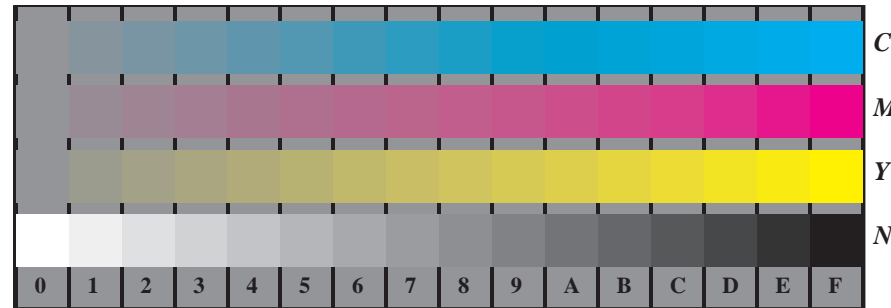
Fg010-3, Bild B5N: Schrift und Landoltringe W, C, M, Y, Z; PS-Operator olv* setrgbcolor



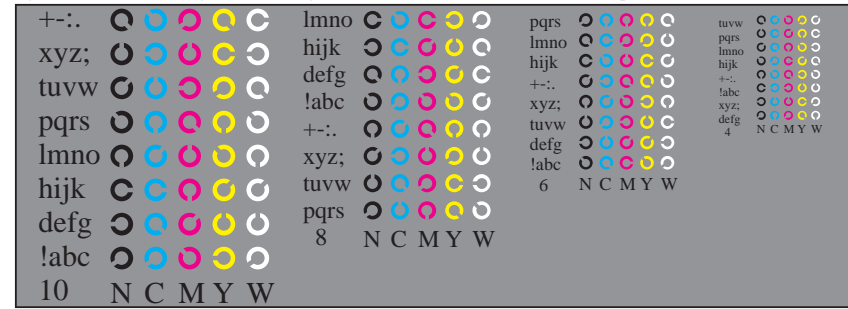
Fg010-5, Bild B6N: Landoltringe N-C, N-M; PS-Operator olv* setrgbcolor



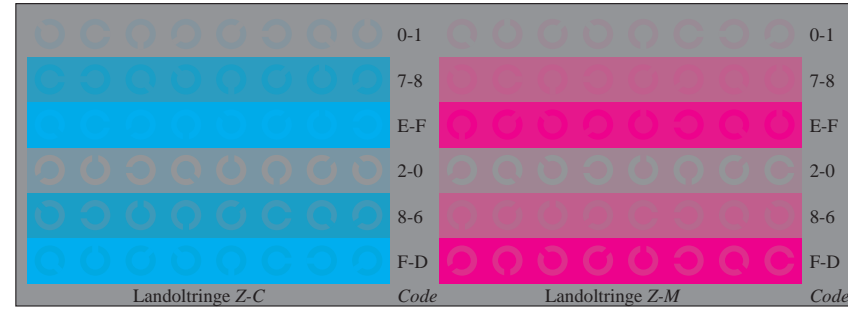
Fg010-7, Bild B7N: Landoltringe N-Y, W-N; PS-Operator olv* setrgbcolor



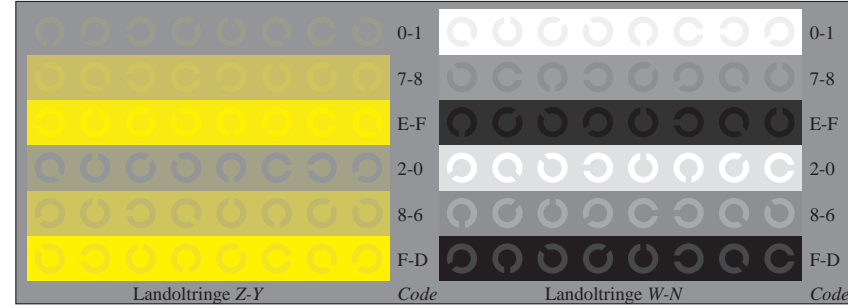
Fg011-1, Bild B4Z: 16 gleichabständige Stufen Z-C, Z-M, Z-Y, W-N; PS-Operator olv* setrgbcolor



Fg011-3, Bild B5Z: Schrift und Landoltringe N, C, M, Y, W; PS-Operator olv* setrgbcolor

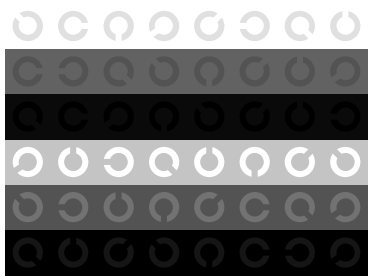
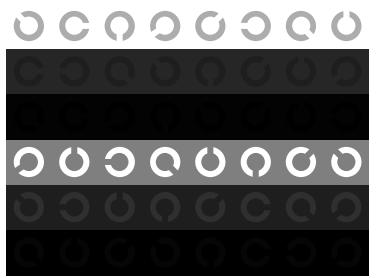
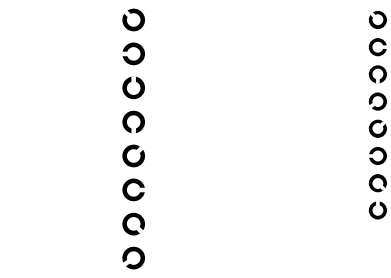
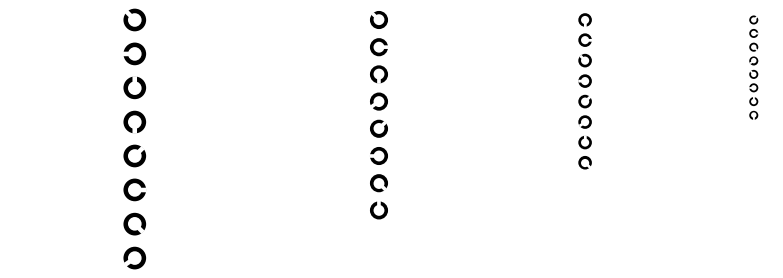


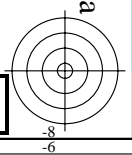
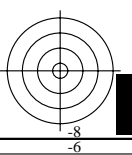
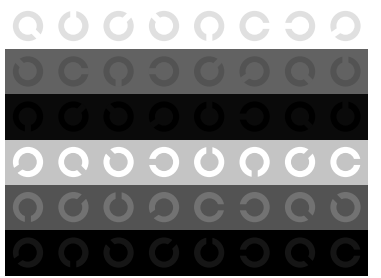
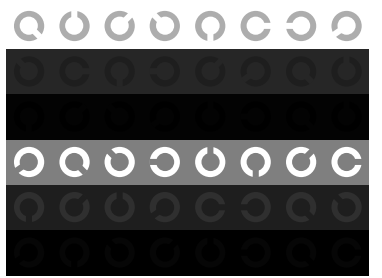
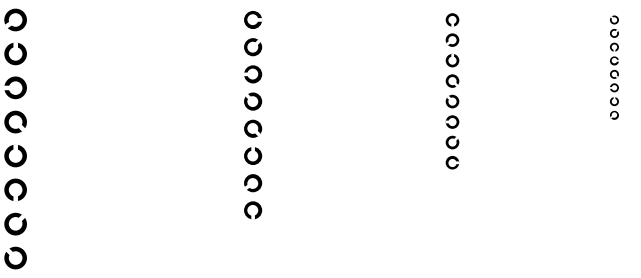
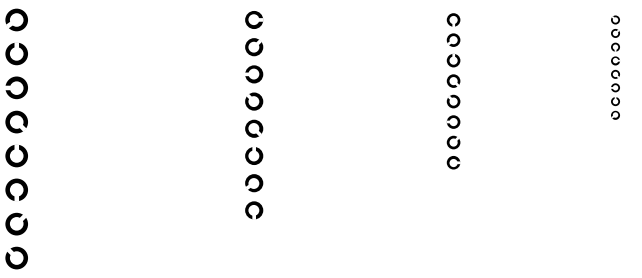
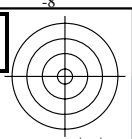
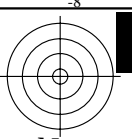
Fg011-5, Bild B6Z: Landoltringe Z-C, Z-M; PS-Operator olv* setrgbcolor

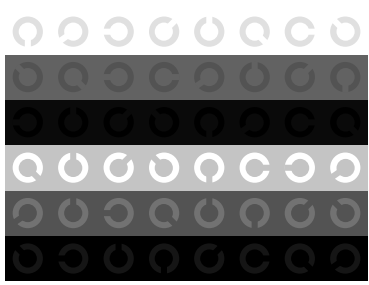
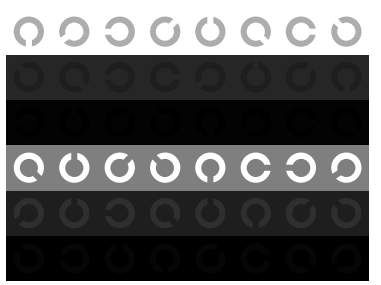
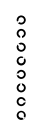
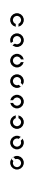
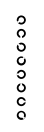
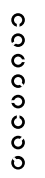


Fg011-7, Bild B7Z: Landoltringe Z-Y, W-N; PS-Operator olv* setrgbcolor

Siehe ähnliche Dateien: <http://www.ps.bam.de/Fg01/>; www.ps.bam.de/Fg.HTM
 Technische Information: <http://www.ps.bam.de> Version 2.1, io=1,1, ColSpx=1

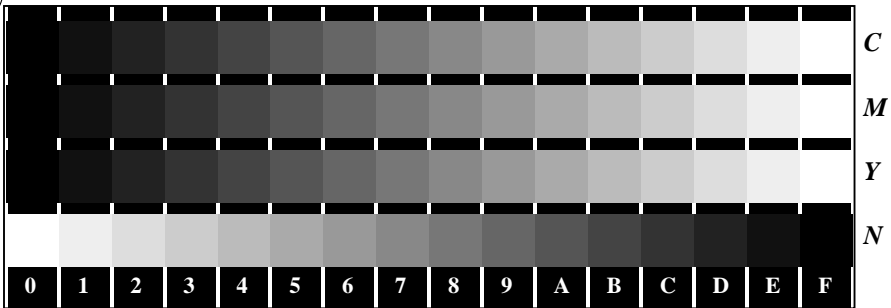




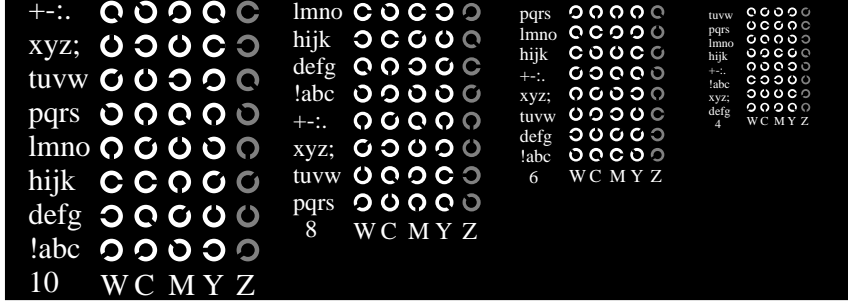


Siehe ähnliche Dateien: <http://www.ps.bam.de/Fg01/>; www.ps.bam.de/Fg01/Version 2.1, io=1,1, Colspx=1
 Technische Information: <http://www.ps.bam.de>

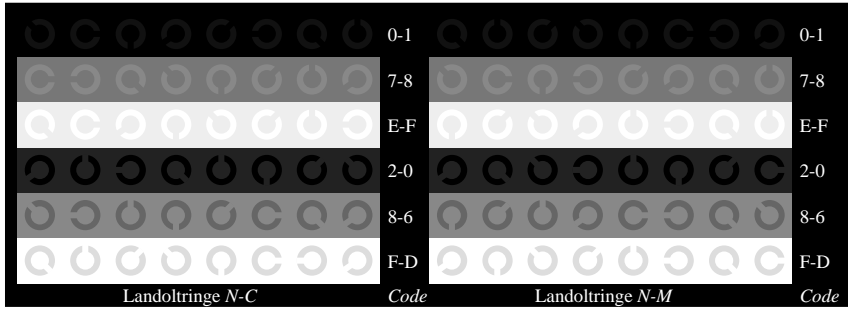
BAM-Registrierung: 20080901-Fg01/10L/L01G00NA.PS/.TXT BAM-Material: Code=rh4ta
 Anwendung für Beurteilung und Messung von Drucker- oder Monitorssystemen



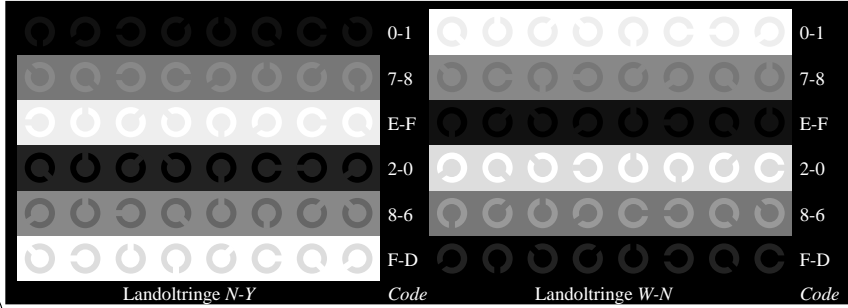
Fg010-1, Bild B4N: 16 gleichabständige Stufen N-C, N-M, N-Y, W-N; PS-Operator *olv* setrgbcolor*



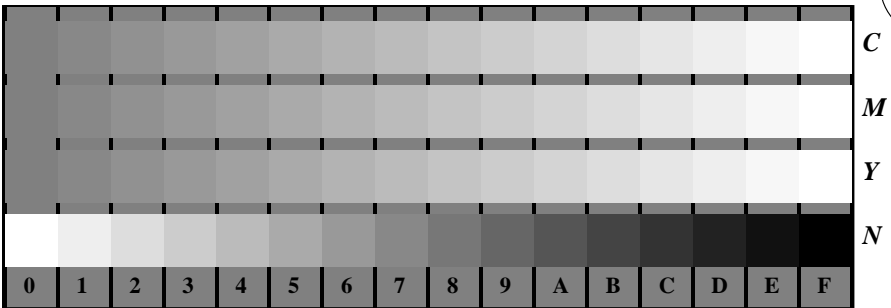
Fg010-3, Bild B5N: Schrift und Landoltringe W, C, M, Y, Z; PS-Operator *olv* setrgbcolor*



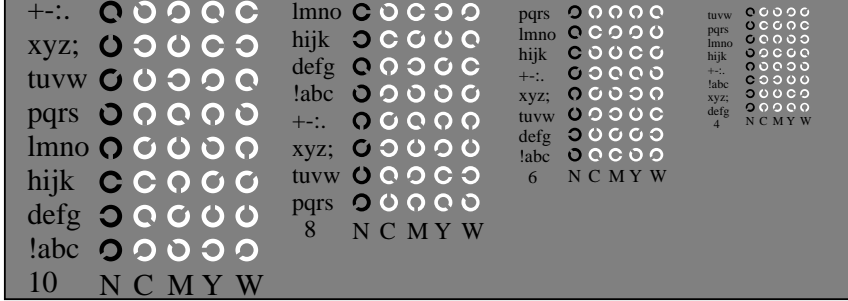
Fg010-5, Bild B6N: Landoltringe N-C, N-M; PS-Operator *olv* setrgbcolor*



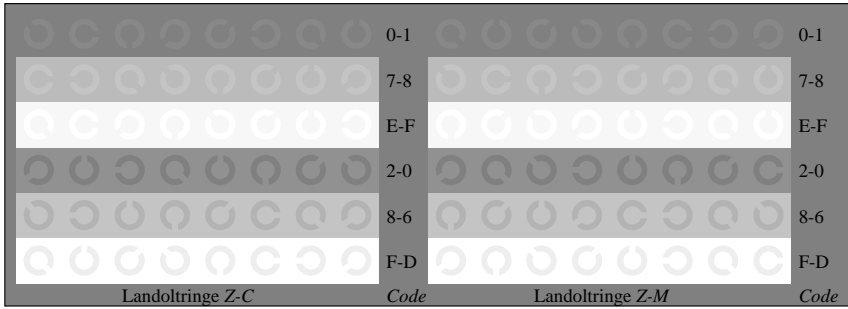
Fg010-7, Bild B7N: Landoltringe N-Y, W-N; PS-Operator *olv* setrgbcolor*



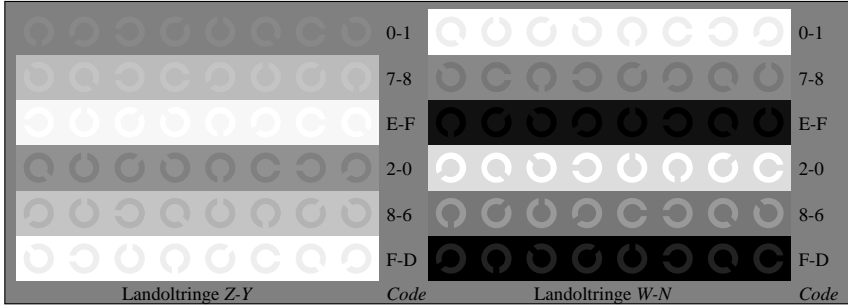
Fg011-1, Bild B4Z: 16 gleichabständige Stufen Z-C, Z-M, Z-Y, W-N; PS-Operator *olv* setrgbcolor*



Fg011-3, Bild B5Z: Schrift und Landoltringe N, C, M, Y, W; PS-Operator *olv* setrgbcolor*



Fg011-5, Bild B6Z: Landoltringe Z-C, Z-M; PS-Operator *olv* setrgbcolor*



Fg011-7, Bild B7Z: Landoltringe Z-Y, W-N; PS-Operator *olv* setrgbcolor*