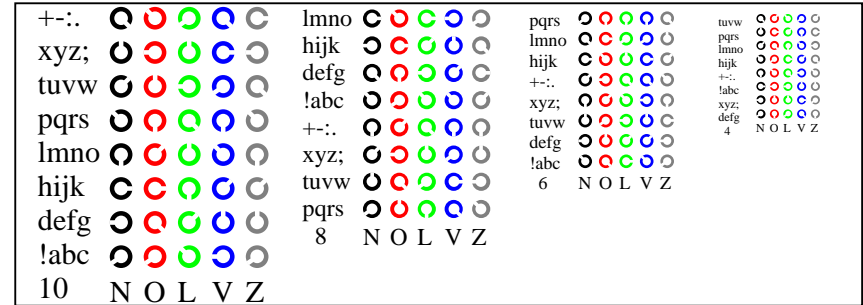
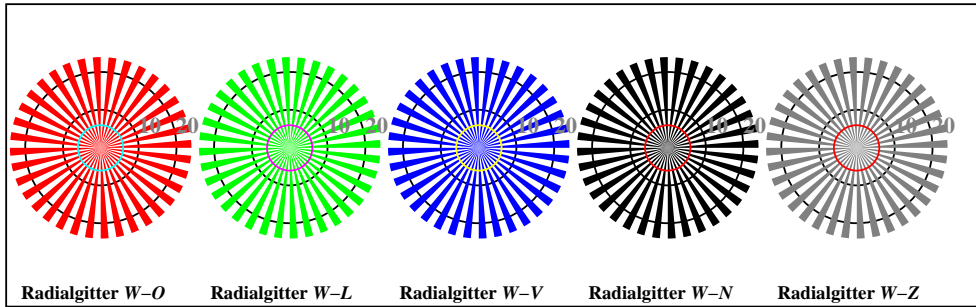


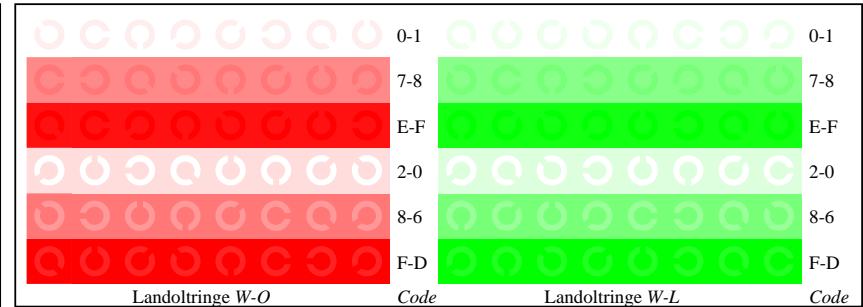
Fg021-1, Bild D4: 16 gleichabständige Stufen $W-O$, $W-L$, $W-V$, $W-N$; PS-Operator $olv^* setrgbcolor$



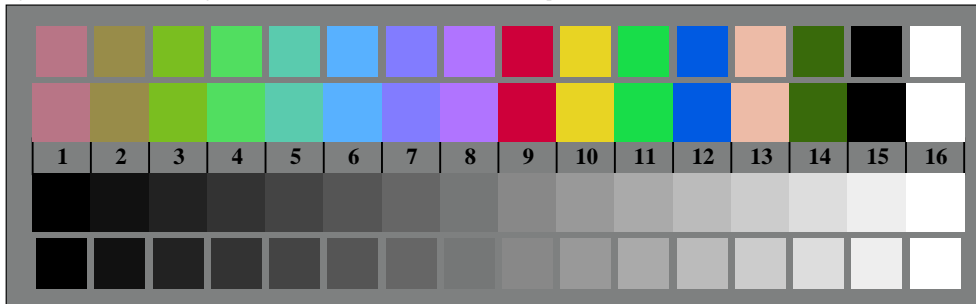
Fg021-3, Bild D5: Schrift und Landoltringe N , O , L , V , Z ; PS-Operator $olv^* setrgbcolor$



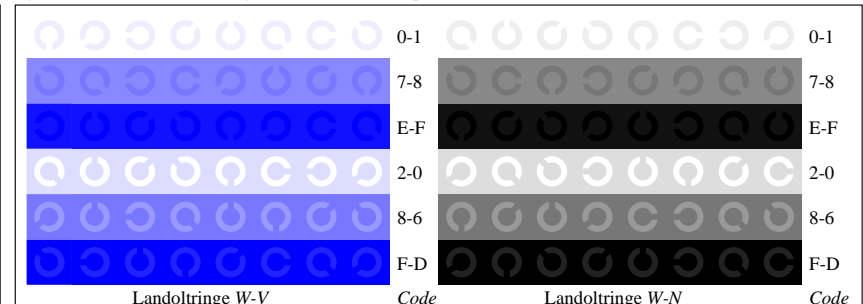
Fg020-5, Bild D2: Radialgitter $W-O$, $W-L$, $W-V$, $W-N$, $W-Z$; PS-Operator $olv^* setrgbcolor$



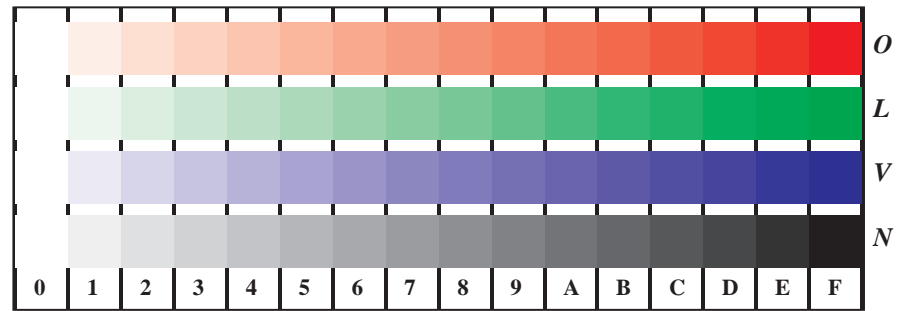
Fg021-5, Bild D6: Landoltringe $W-O$, $W-L$; PS-Operator $olv^* setrgbcolor$



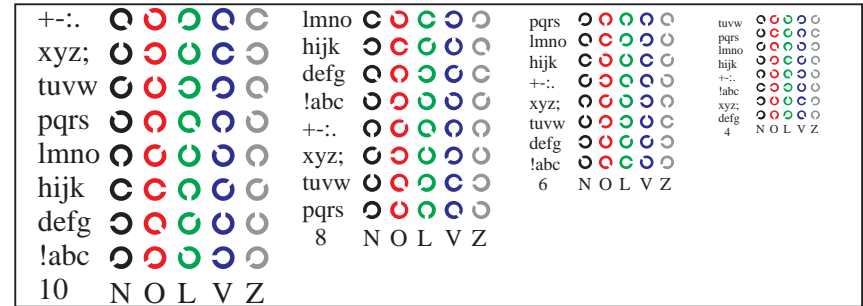
Fg020-7, Bild D3: 14 CIE-Prüffarben sowie 2 + 16 Graustufen; PS-Operator $olv^* setrgbcolor$



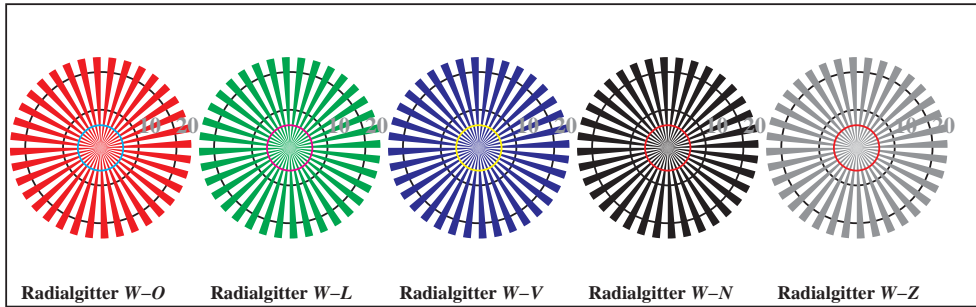
Fg021-7, Bild D7: Landoltringe $W-V$, $W-N$; PS-Operator $olv^* setrgbcolor$



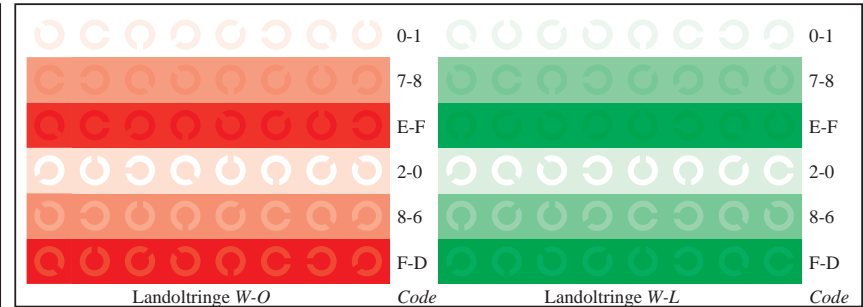
Fg021-1, Bild D4: 16 gleichabständige Stufen $W-O$, $W-L$, $W-V$, $W-N$; PS-Operator olv^* *setrgbcolor*



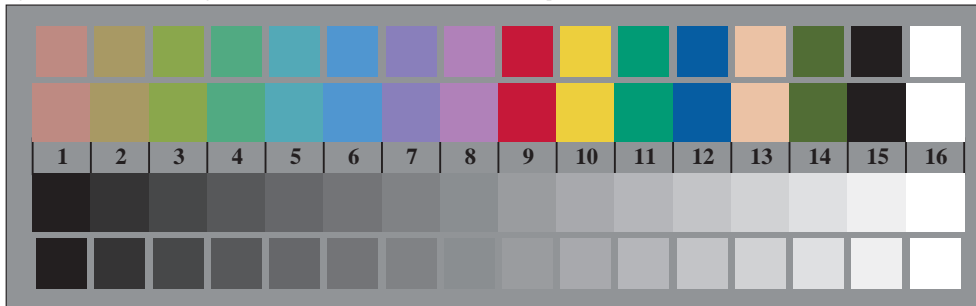
Fg021-3, Bild D5: Schrift und Landoltringe N , O , L , V , Z ; PS-Operator olv^* *setrgbcolor*



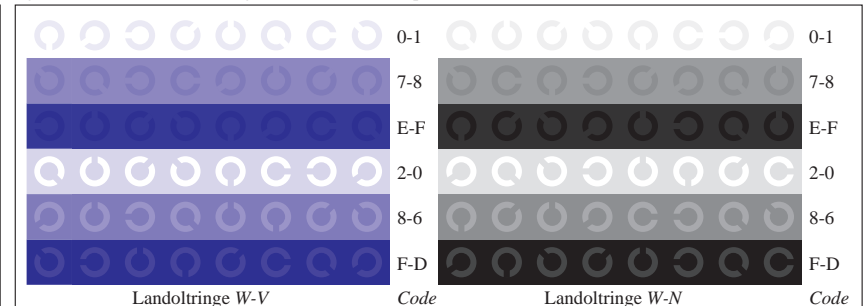
Fg020-5, Bild D2: Radialgitter $W-O$, $W-L$, $W-V$, $W-N$, $W-Z$; PS-Operator olv^* *setrgbcolor*



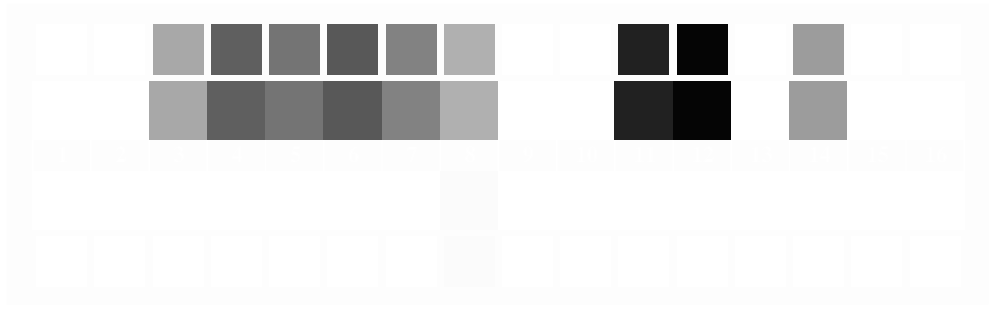
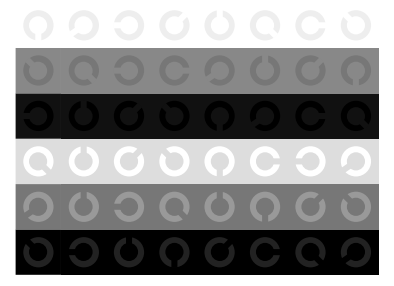
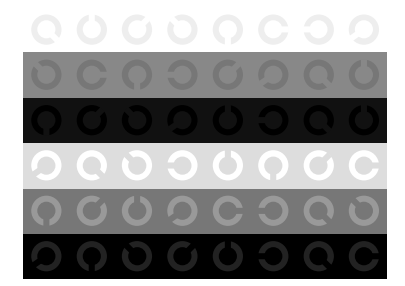
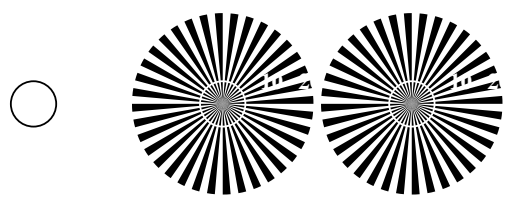
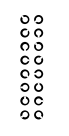
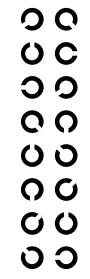
Fg021-5, Bild D6: Landoltringe $W-O$, $W-L$; PS-Operator olv^* *setrgbcolor*

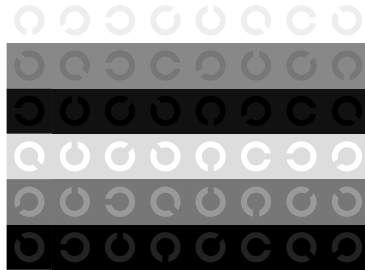
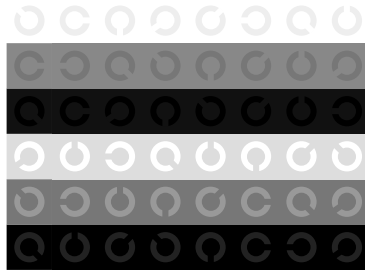
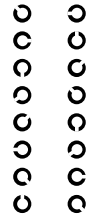
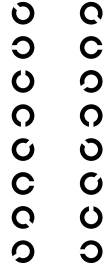
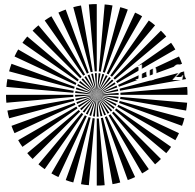
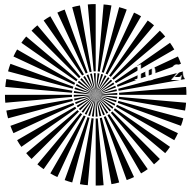


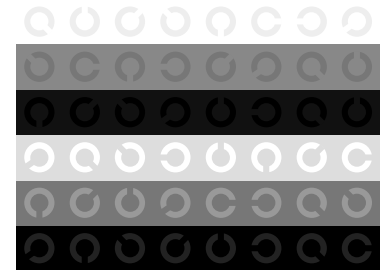
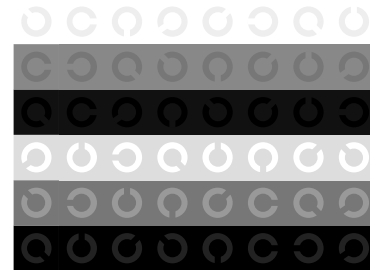
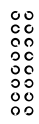
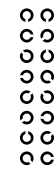
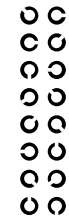
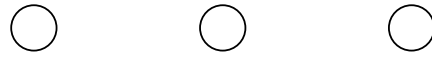
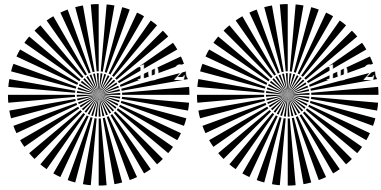
Fg020-7, Bild D3: 14 CIE-Prüffarben sowie 2 + 16 Graustufen; PS-Operator olv^* *setrgbcolor*

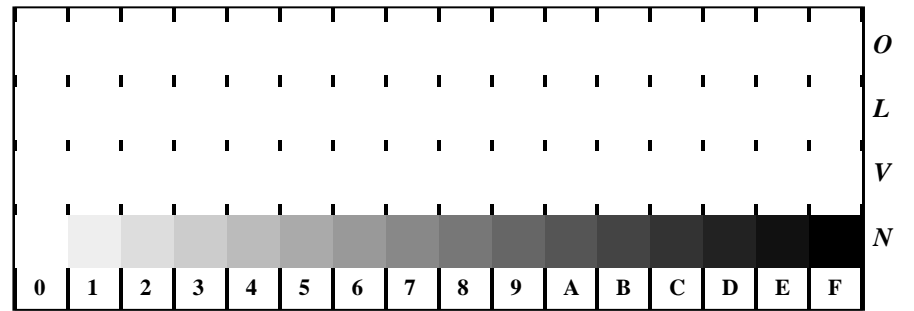


Fg021-7, Bild D7: Landoltringe $W-V$, $W-N$; PS-Operator olv^* *setrgbcolor*

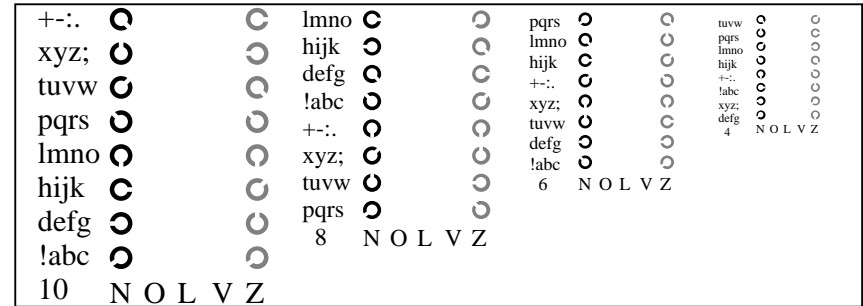




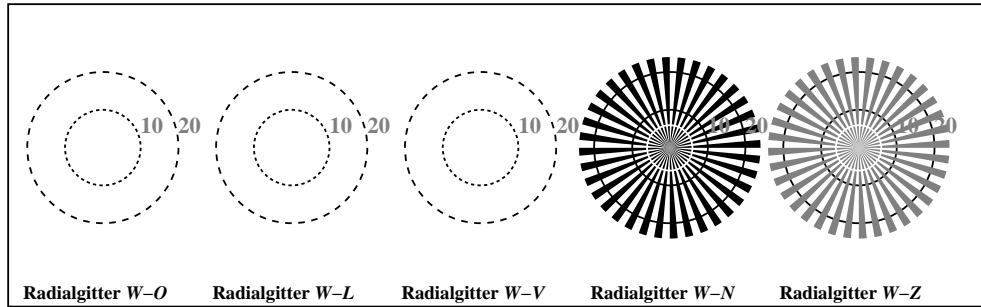




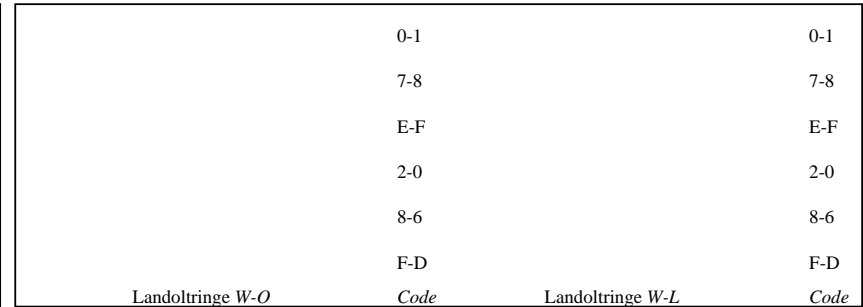
Fg021-1, Bild D4: 16 gleichabständige Stufen $W-O$, $W-L$, $W-V$, $W-N$; PS-Operator $olv^* setrgbcolor$



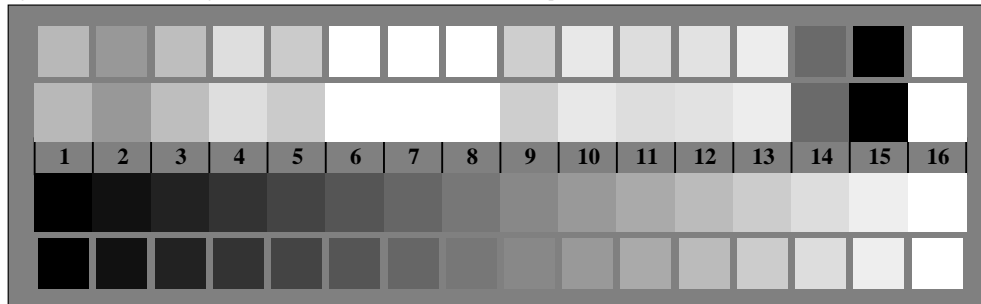
Fg021-3, Bild D5: Schrift und Landoltringe N , O , L , V , Z ; PS-Operator $olv^* setrgbcolor$



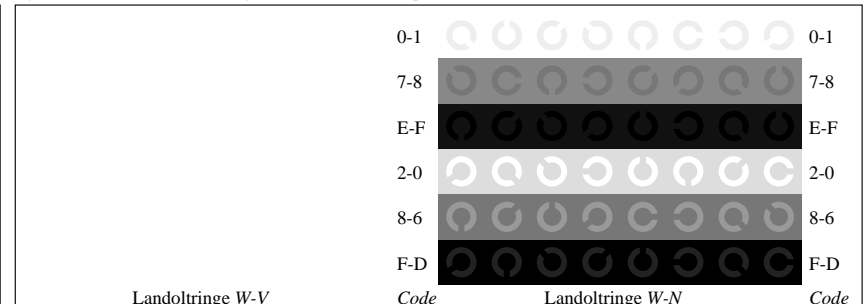
Fg020-5, Bild D2: Radialgitter $W-O$, $W-L$, $W-V$, $W-N$, $W-Z$; PS-Operator $olv^* setrgbcolor$



Fg021-5, Bild D6: Landoltringe $W-O$, $W-L$; PS-Operator $olv^* setrgbcolor$



Fg020-7, Bild D3: 14 CIE-Prüffarben sowie 2 + 16 Graustufen; PS-Operator $olv^* setrgbcolor$



Fg021-7, Bild D7: Landoltringe $W-V$, $W-N$; PS-Operator $olv^* setrgbcolor$