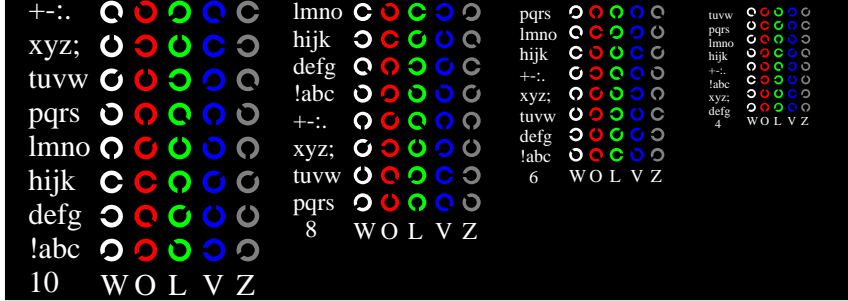
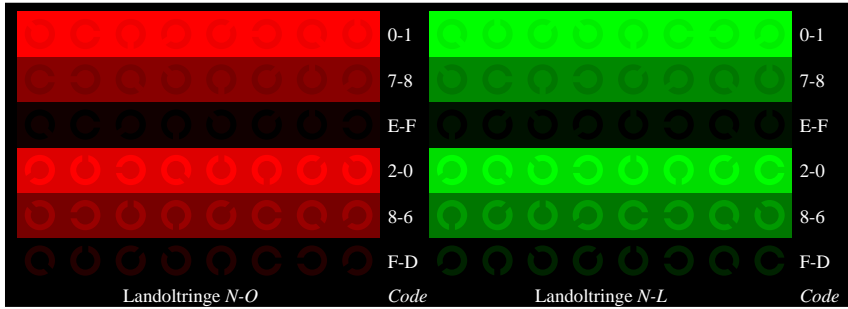


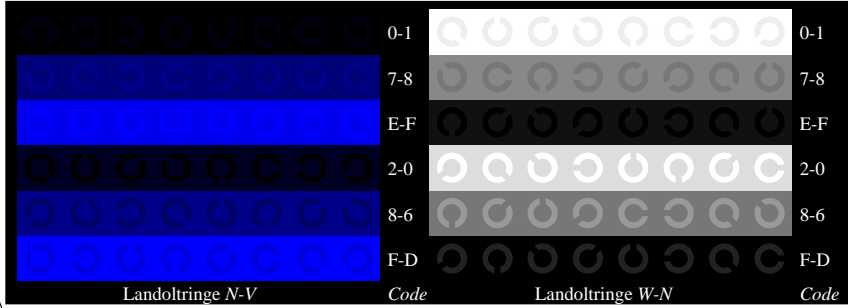
Fg030-1, Bild D4N: 16 gleichabständige Stufen N-O, N-L, N-V, W-N; PS-Operator olv\* setrgbcolor



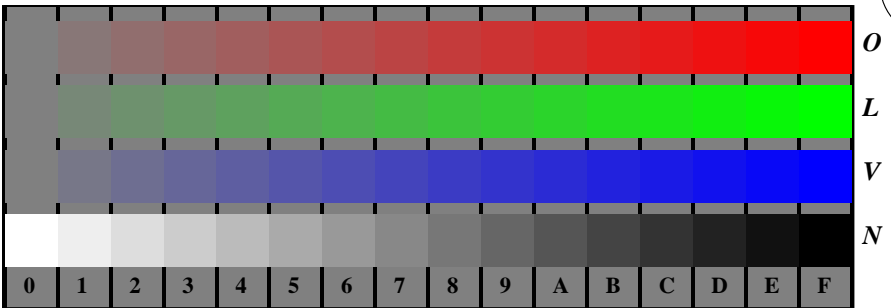
Fg030-3, Bild D5N: Schrift und Landoltringe W, O, L, V, Z; PS-Operator olv\* setrgbcolor



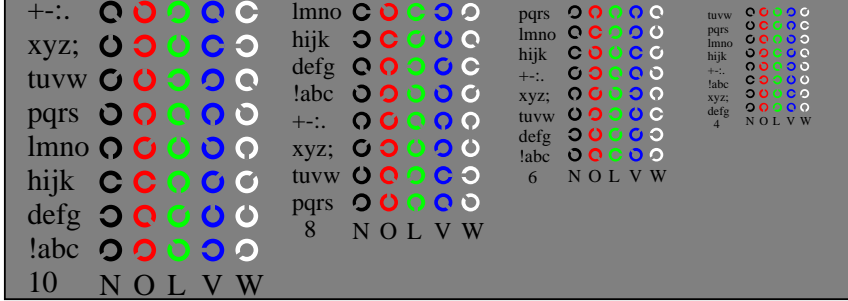
Fg030-5, Bild D6N: Landoltringe N-O, N-L; PS-Operator olv\* setrgbcolor



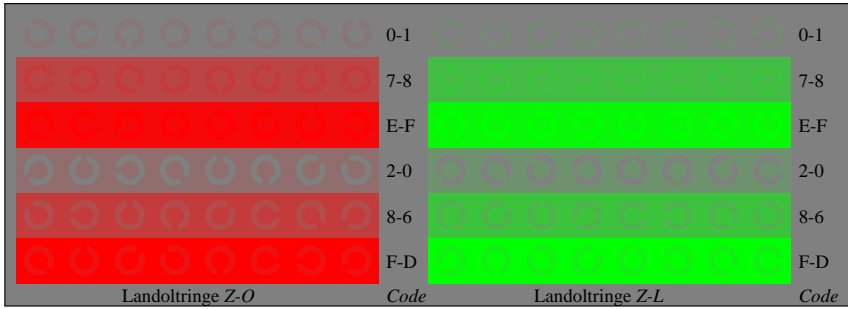
Fg030-7, Bild D7N: Landoltringe N-V, W-N; PS-Operator olv\* setrgbcolor



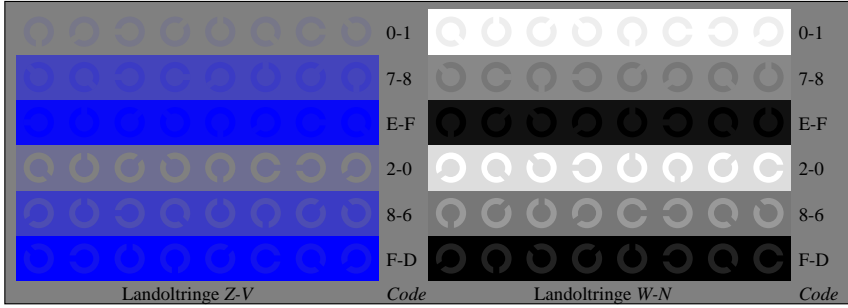
Fg031-1, Bild D4Z: 16 gleichabständige Stufen Z-O, Z-L, Z-V, W-N; PS-Operator olv\* setrgbcolor



Fg031-3, Bild D5Z: Schrift und Landoltringe N, O, L, V, W; PS-Operator olv\* setrgbcolor



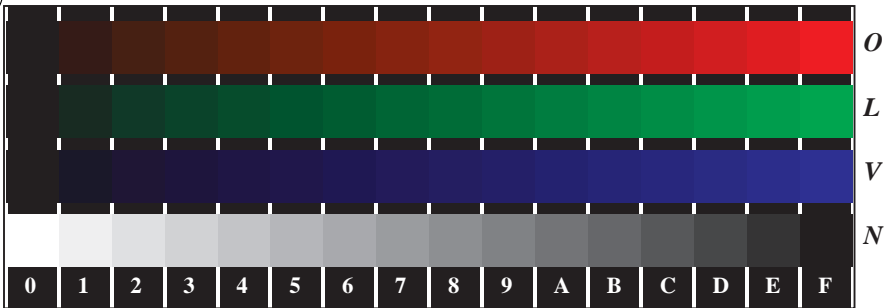
Fg031-5, Bild D6Z: Landoltringe Z-O, Z-L; PS-Operator olv\* setrgbcolor



Fg031-7, Bild D7Z: Landoltringe Z-V, W-N; PS-Operator olv\* setrgbcolor

Siehe ähnliche Dateien: <http://www.ps.bam.de/Fg03/>; [www.ps.bam.de/Version.2.1,io=1,1,Colspx=1](http://www.ps.bam.de/Version.2.1,io=1,1,Colspx=1)

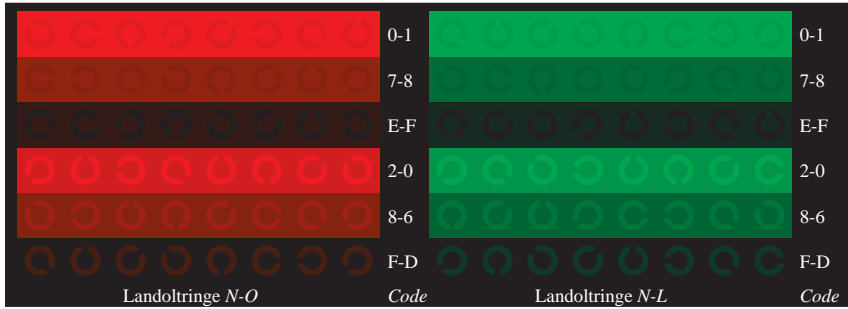
BAM-Registrierung: 20080901-Fg03/10L/L03G00NA.PS/.TXT BAM-Material: Code=rh4ta  
 Anwendung für Beurteilung und Messung von Drucker- oder Monitorssystemen



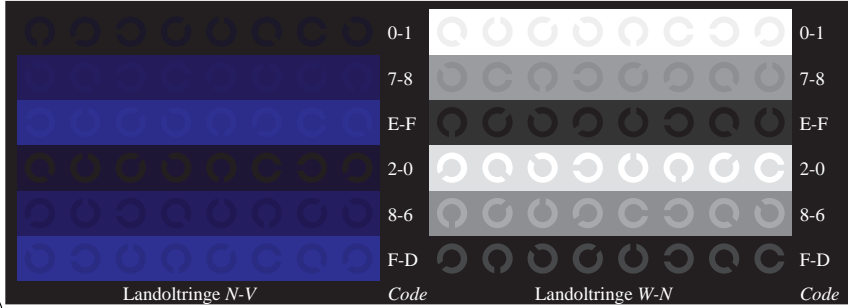
Fg030-1, Bild D4N: 16 gleichabständige Stufen N-O, N-L, N-V, W-N; PS-Operator olv\* setrgbcolor



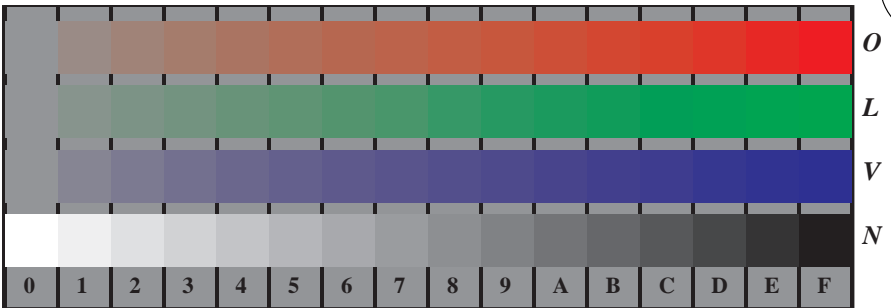
Fg030-3, Bild D5N: Schrift und Landoltringe W, O, L, V, Z; PS-Operator olv\* setrgbcolor



Fg030-5, Bild D6N: Landoltringe N-O, N-L; PS-Operator olv\* setrgbcolor



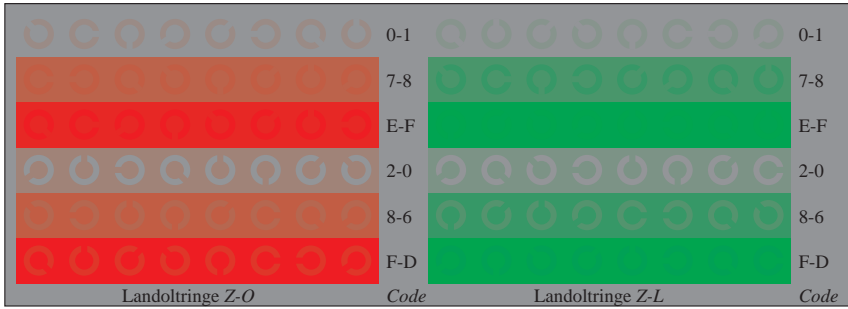
Fg030-7, Bild D7N: Landoltringe N-V, W-N; PS-Operator olv\* setrgbcolor



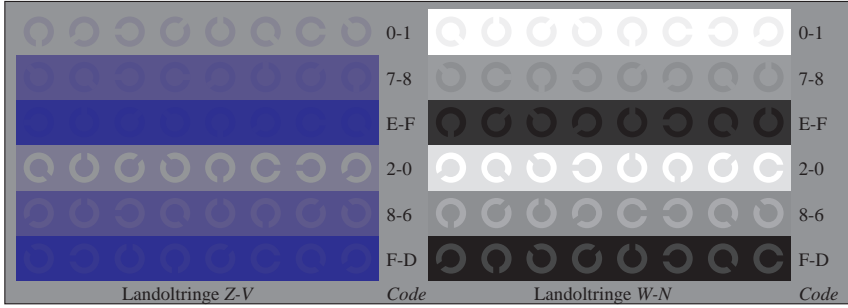
Fg031-1, Bild D4Z: 16 gleichabständige Stufen Z-O, Z-L, Z-V, W-N; PS-Operator olv\* setrgbcolor



Fg031-3, Bild D5Z: Schrift und Landoltringe N, O, L, V, W; PS-Operator olv\* setrgbcolor



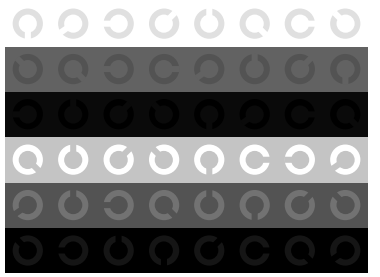
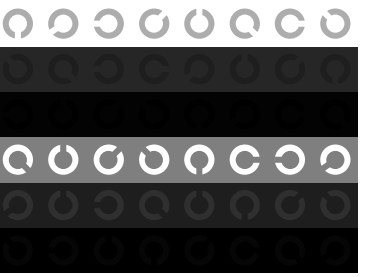
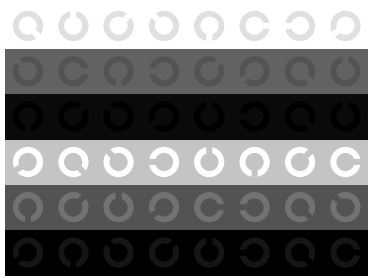
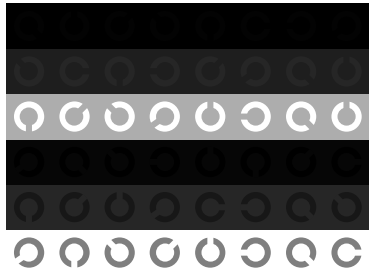
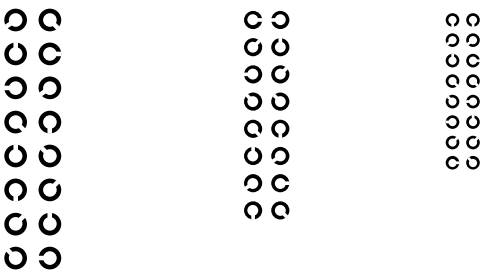
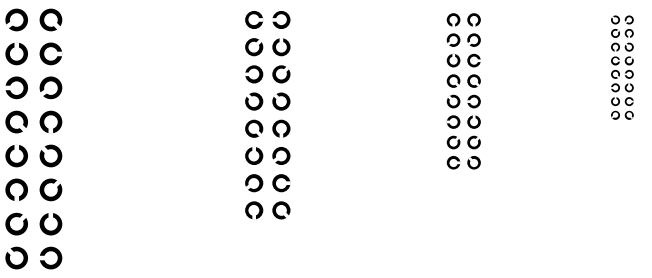
Fg031-5, Bild D6Z: Landoltringe Z-O, Z-L; PS-Operator olv\* setrgbcolor

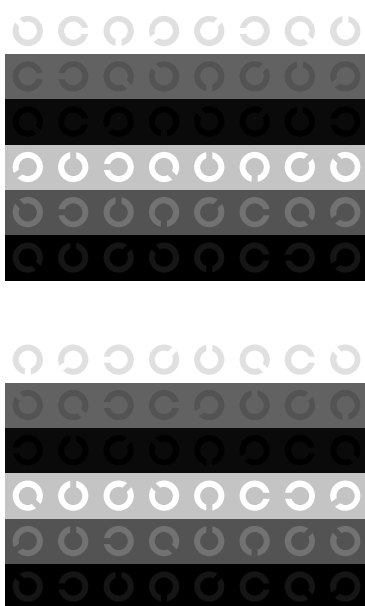
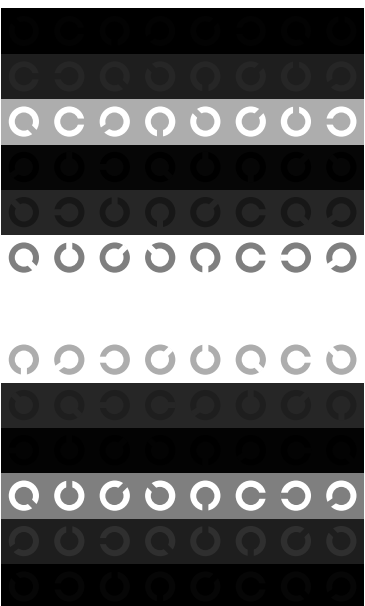
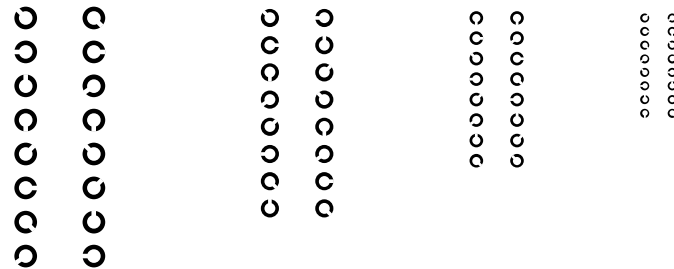
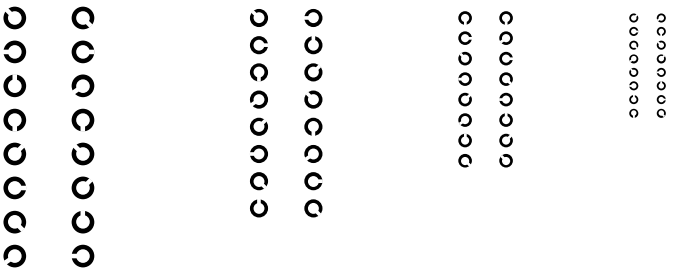


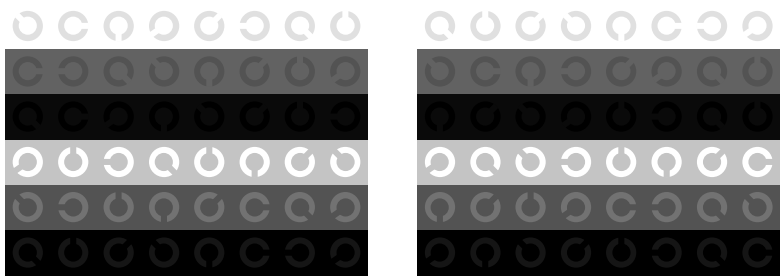
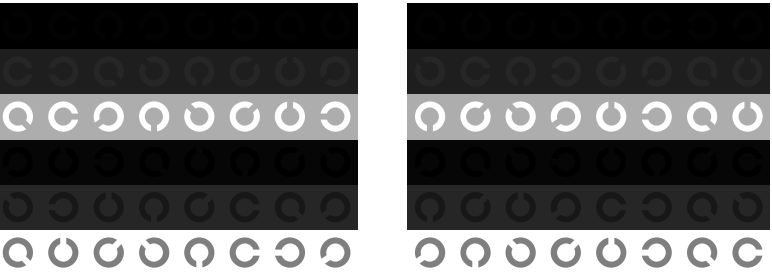
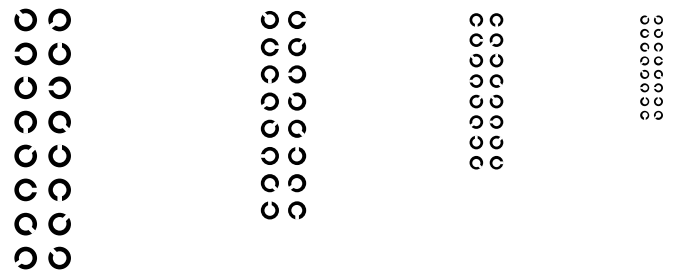
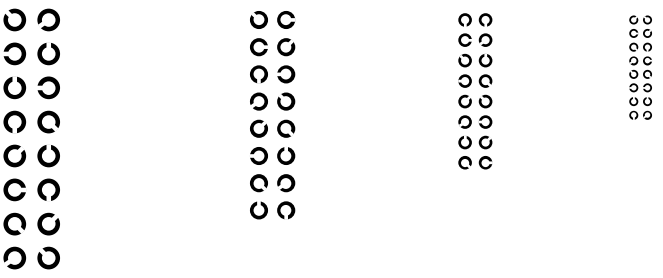
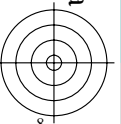
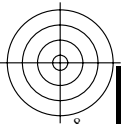
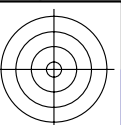
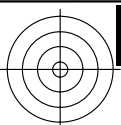
Fg031-7, Bild D7Z: Landoltringe Z-V, W-N; PS-Operator olv\* setrgbcolor

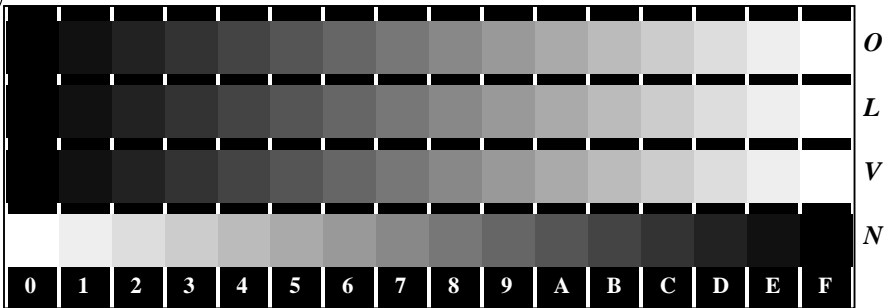
Siehe ähnliche Dateien: <http://www.ps.bam.de/Fg03/>; [www.ps.bam.de/Fg03/](http://www.ps.bam.de/Fg03/).  
 Technische Information: <http://www.ps.bam.de> Version 2.1, io=1,1, Colspx=1

BAM-Registrierung: 20080901-Fg03/10L/L03G00NA.PS/.TXT BAM-Material: Code=rh4ta  
 Anwendung für Beurteilung und Messung von Drucker- oder Monitorssystemen

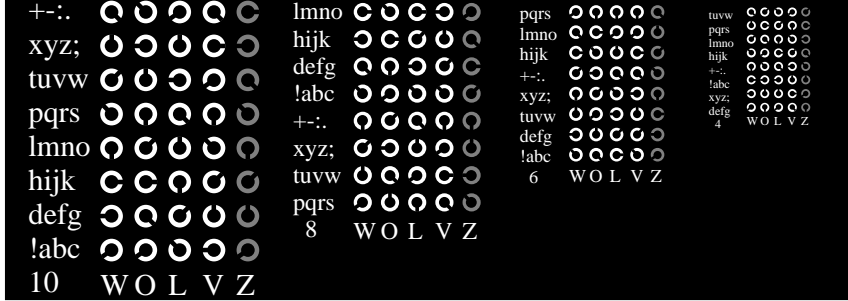




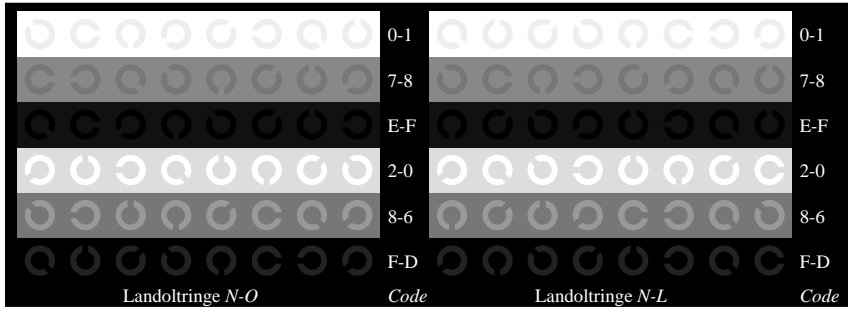




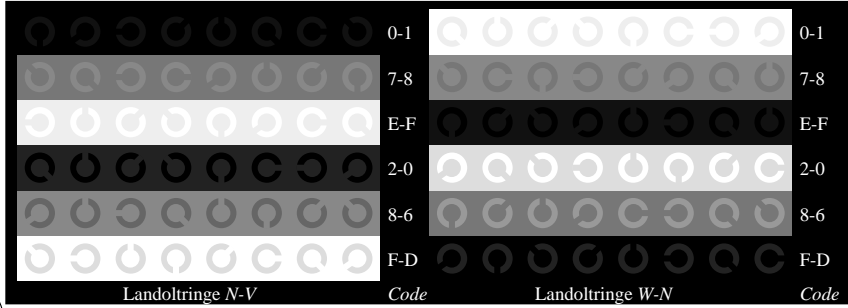
Fg030-1, Bild D4N: 16 gleichabständige Stufen N-O, N-L, N-V, W-N; PS-Operator *olv\* setrgbcolor*



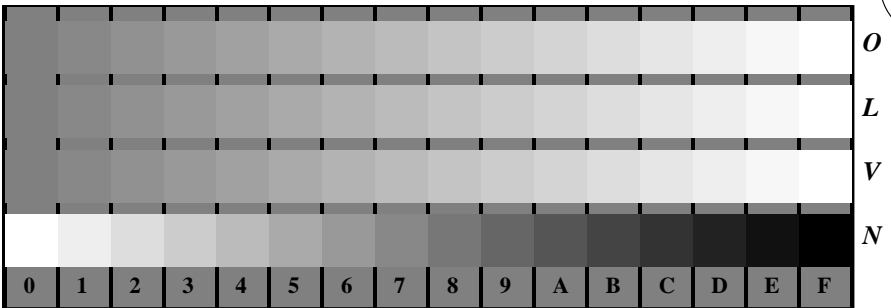
Fg030-3, Bild D5N: Schrift und Landoltringe W, O, L, V, Z; PS-Operator *olv\* setrgbcolor*



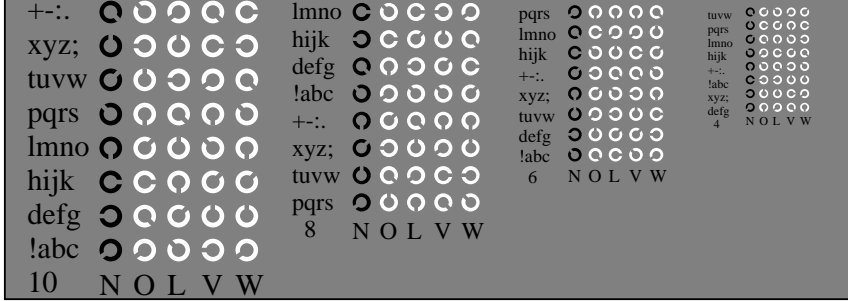
Fg030-5, Bild D6N: Landoltringe N-O, N-L; PS-Operator *olv\* setrgbcolor*



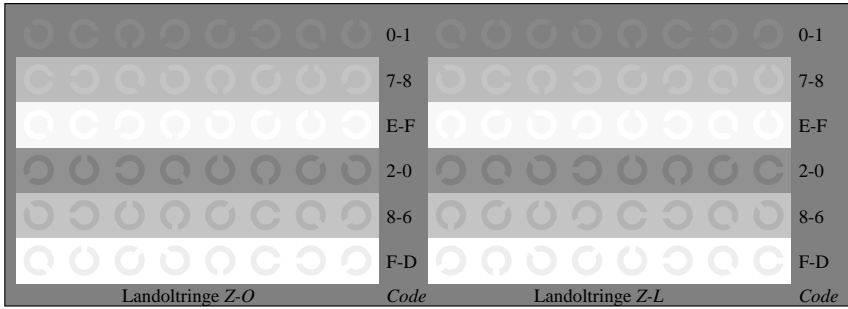
Fg030-7, Bild D7N: Landoltringe N-V, W-N; PS-Operator *olv\* setrgbcolor*



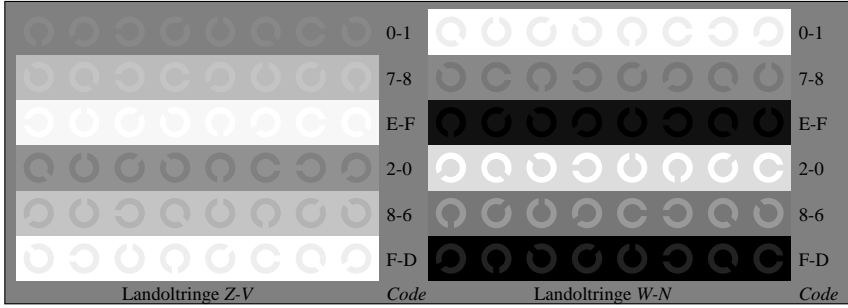
Fg031-1, Bild D4Z: 16 gleichabständige Stufen Z-O, Z-L, Z-V, W-N; PS-Operator *olv\* setrgbcolor*



Fg031-3, Bild D5Z: Schrift und Landoltringe N, O, L, V, W; PS-Operator *olv\* setrgbcolor*



Fg031-5, Bild D6Z: Landoltringe Z-O, Z-L; PS-Operator *olv\* setrgbcolor*



Fg031-7, Bild D7Z: Landoltringe Z-V, W-N; PS-Operator *olv\* setrgbcolor*

Siehe ähnliche Dateien: <http://www.ps.bam.de/Fg03/>; [www.ps.bam.de/Fg03/](http://www.ps.bam.de/Fg03/);  
 Technische Information: <http://www.ps.bam.de> Version 2.1, io=1,1, Colspx=1