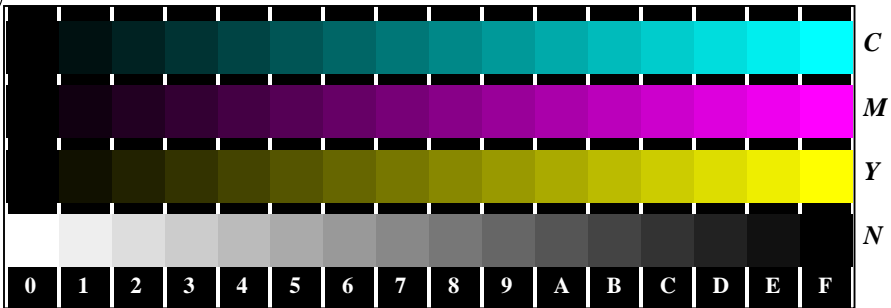
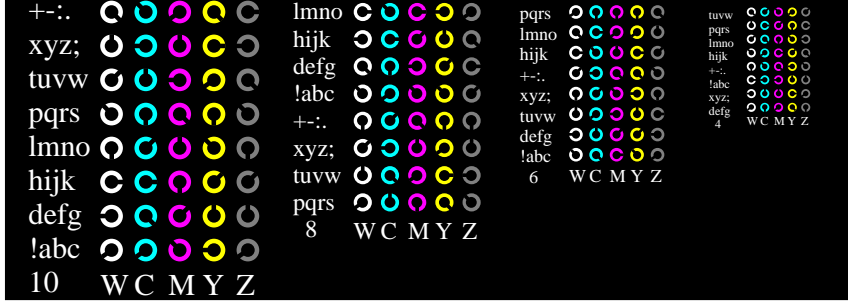


Siehe ähnliche Dateien: <http://www.ps.bam.de/Fg05/>; www.ps.bam.de/Fg05/.HTM
 Technische Information: <http://www.ps.bam.de/Version 2.1, io=1,1, Colspx=1>

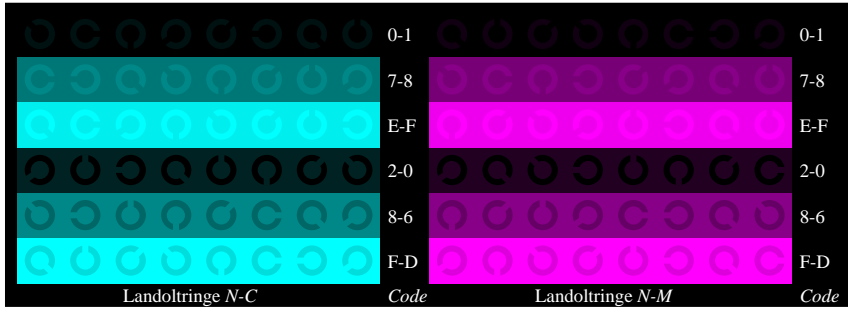
BAM-Registrierung: 20080901-Fg05/10L/L05G00NP.PS/ .PDF BAM-Material: Code=rh4ta
 Anwendung für Beurteilung und Messung von Drucker- oder Monitorsystemen



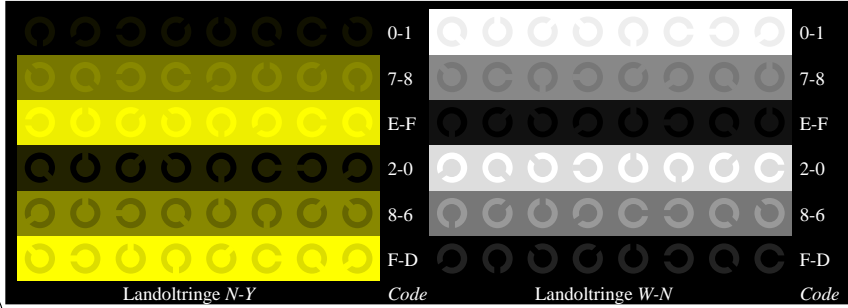
Ee070-1, Bild B4N: 16 gleichabständige Stufen N-C, N-M, N-Y, W-N; PS-Operator *olv* setrgbcolor*



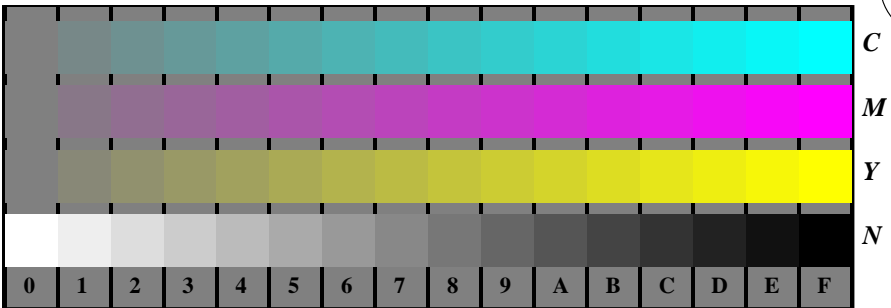
Ee070-3, Bild B5N: Schrift und Landoltringe W, C, M, Y, Z; PS-Operator *olv* setrgbcolor*



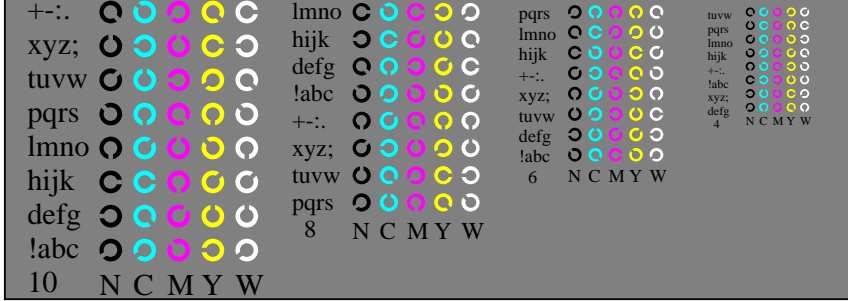
Ee070-5, Bild B6N: Landoltringe N-C, N-M; PS-Operator *olv* setrgbcolor*



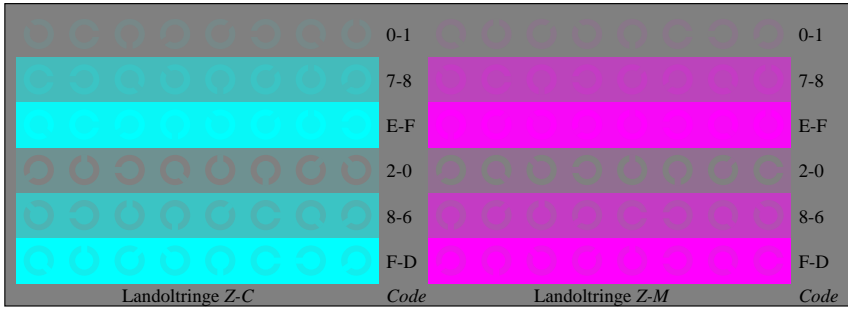
Ee070-7, Bild B7N: Landoltringe N-Y, W-N; PS-Operator *olv* setrgbcolor*



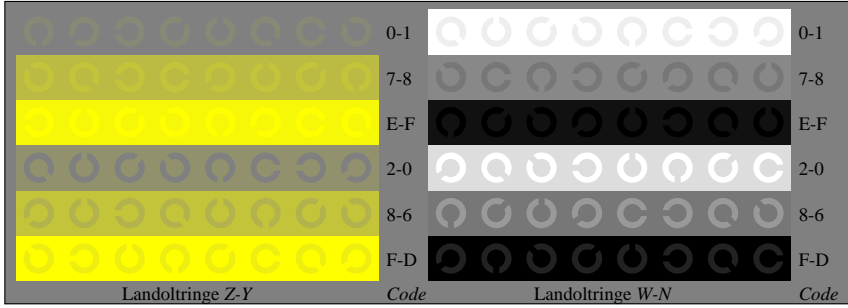
Ee071-1, Bild B4Z: 16 gleichabständige Stufen Z-C, Z-M, Z-Y, W-N; PS-Operator *olv* setrgbcolor*



Ee071-3, Bild B5Z: Schrift und Landoltringe N, C, M, Y, W; PS-Operator *olv* setrgbcolor*



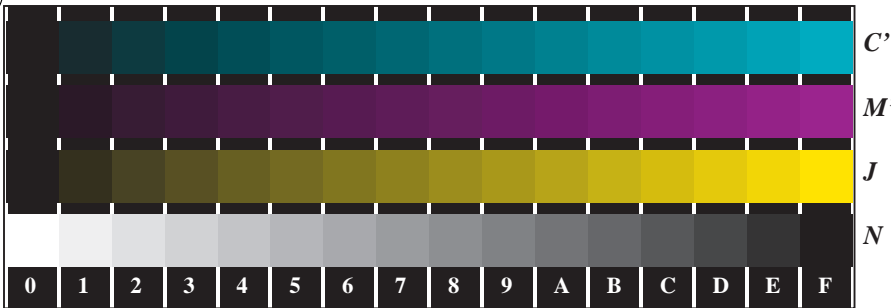
Ee071-5, Bild B6Z: Landoltringe Z-C, Z-M; PS-Operator *olv* setrgbcolor*



Ee071-7, Bild B7Z: Landoltringe Z-Y, W-N; PS-Operator *olv* setrgbcolor*

Siehe ähnliche Dateien: <http://www.ps.bam.de/Fg05/>; www.ps.bam.de/Fg.HTM
 Technische Information: <http://www.ps.bam.de> Version 2.1, io=1,1, Colspx=1

BAM-Registrierung: 20080901-Fg05/10L/L05G00NP.PS/.PDF BAM-Material: Code=rh4ta
 Anwendung für Beurteilung und Messung von Drucker- oder Monitorssystemen



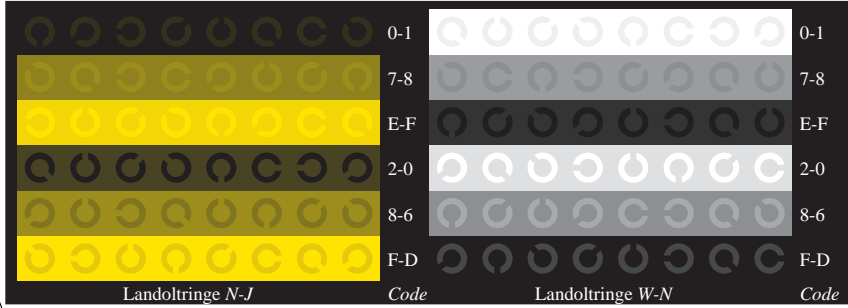
Ee070-1, Bild B4N: 16 gleichabständige Stufen $N-C'$, $N-M'$, $N-J$, $W-N$; PS-Operator $rgb^* setrgbcolor$



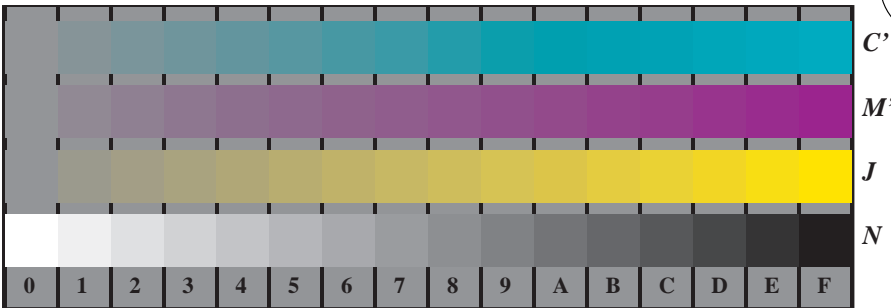
Ee070-3, Bild B5N: Schrift und Landoltringe W, C', M', J, Z ; PS-Operator $rgb^* setrgbcolor$



Ee070-5, Bild B6N: Landoltringe $N-C'$, $N-M'$; PS-Operator $rgb^* setrgbcolor$



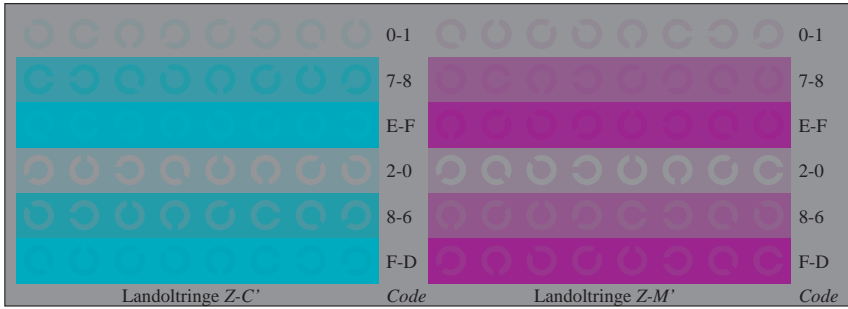
Ee070-7, Bild B7N: Landoltringe $N-J, W-N$; PS-Operator $rgb^* setrgbcolor$



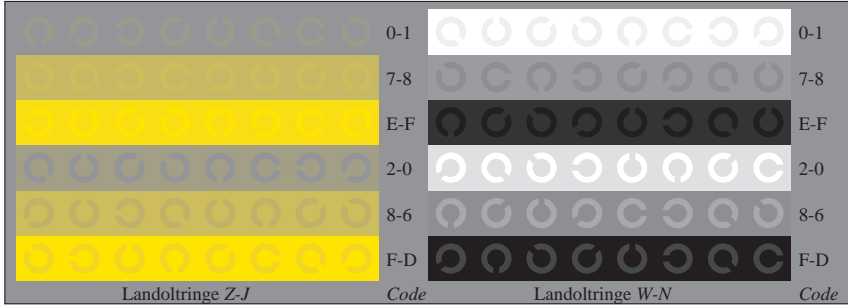
Ee071-1, Bild B4Z: 16 gleichabständige Stufen $Z-C'$, $Z-M'$, $Z-J$, $W-N$; PS-Operator $rgb^* setrgbcolor$



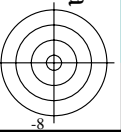
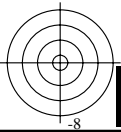
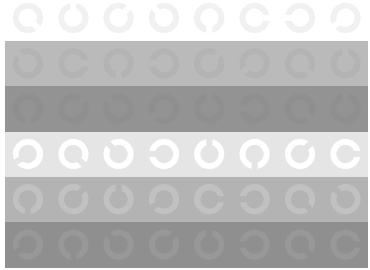
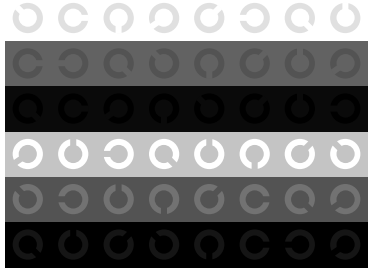
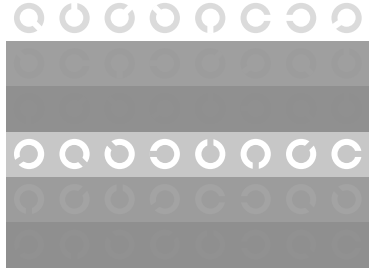
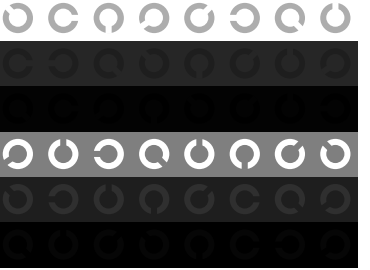
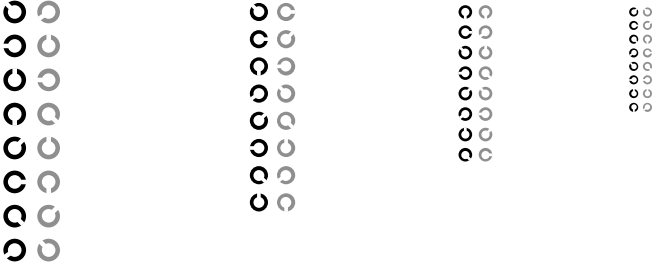
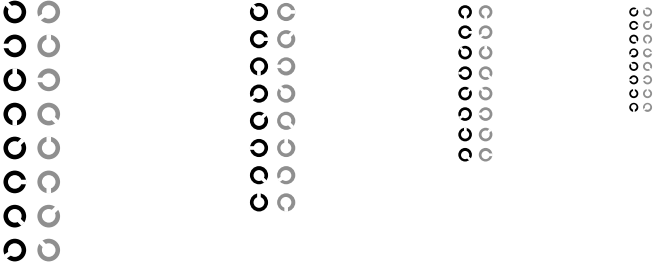
Ee071-3, Bild B5Z: Schrift und Landoltringe N, C', M', J, W ; PS-Operator $rgb^* setrgbcolor$

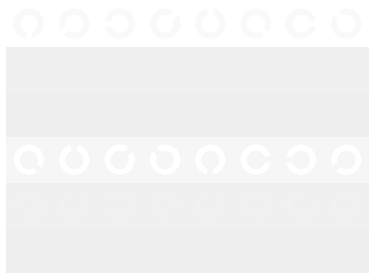
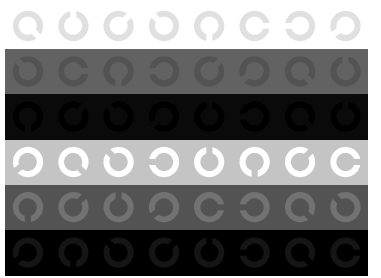
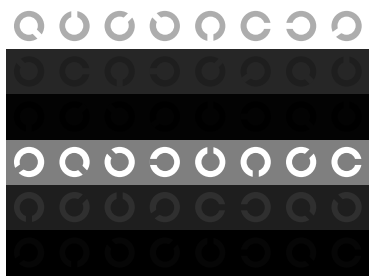
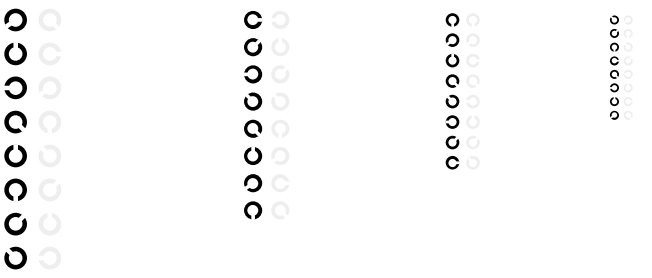
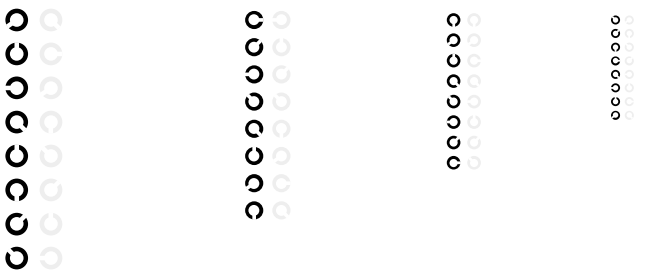
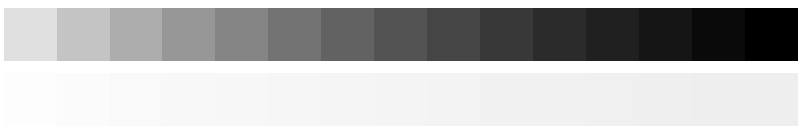
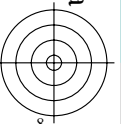
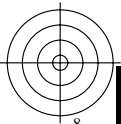
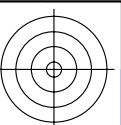
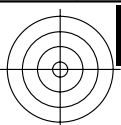


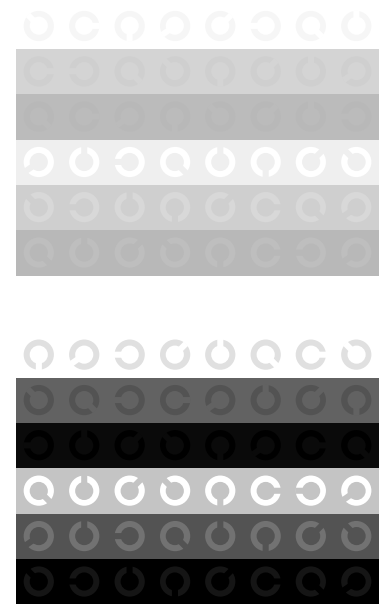
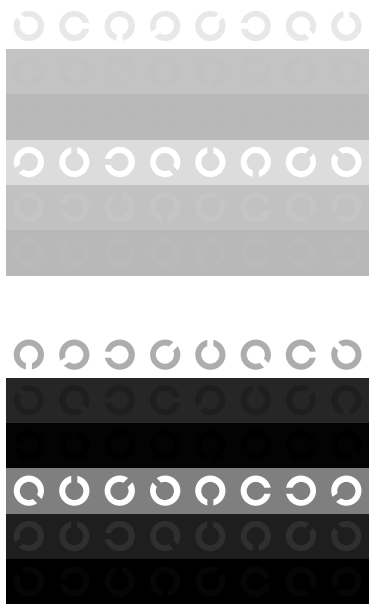
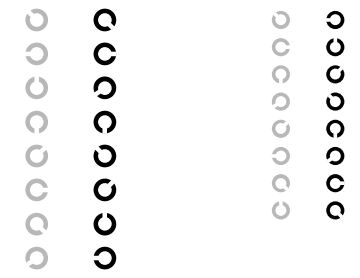
Ee071-5, Bild B6Z: Landoltringe $Z-C'$, $Z-M'$; PS-Operator $rgb^* setrgbcolor$



Ee071-7, Bild B7Z: Landoltringe $Z-J, W-N$; PS-Operator $rgb^* setrgbcolor$

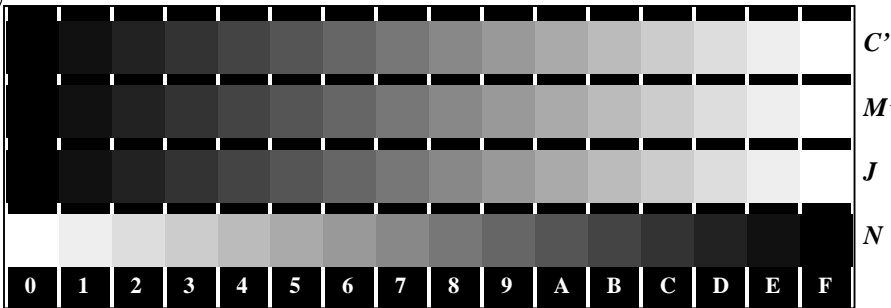




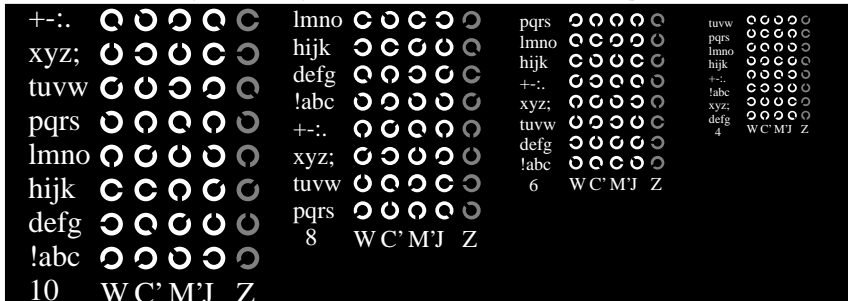


Siehe ähnliche Dateien: <http://www.ps.bam.de/Fg05/>; www.ps.bam.de/Fg05/Version 2.1, io=1,1, Colspx=1
 Technische Information: <http://www.ps.bam.de>

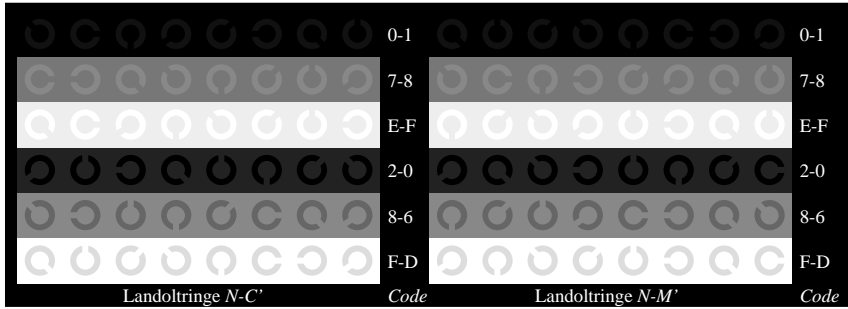
BAM-Registrierung: 20080901-Fg05/10L/L05G00NP.PS/.PDF BAM-Material: Code=rh4ta
 Anwendung für Beurteilung und Messung von Drucker- oder Monitorsystemen



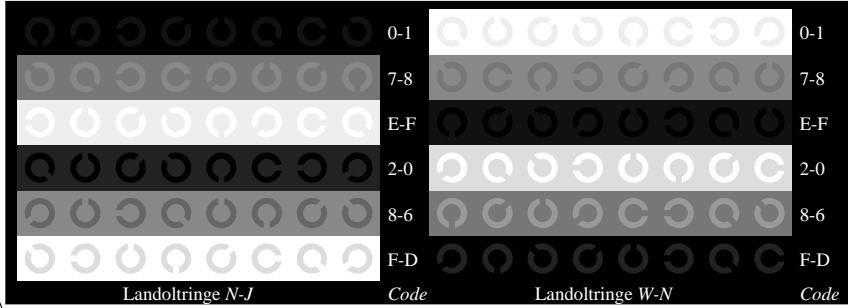
Ee070-1, Bild B4N: 16 gleichabständige Stufen $N-C'$, $N-M'$, $N-J$, $W-N$; PS-Operator $rgb^* setrgbcolor$



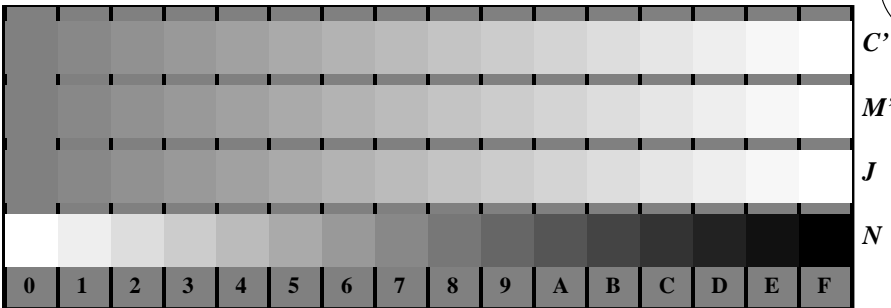
Ee070-3, Bild B5N: Schrift und Landoltringe W, C', M', J, Z ; PS-Operator $rgb^* setrgbcolor$



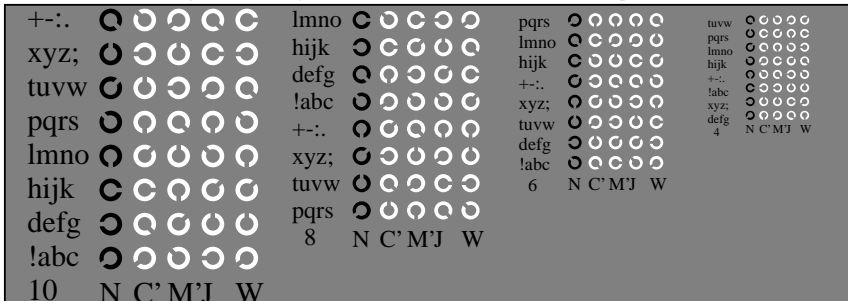
Ee070-5, Bild B6N: Landoltringe $N-C'$, $N-M'$; PS-Operator $rgb^* setrgbcolor$



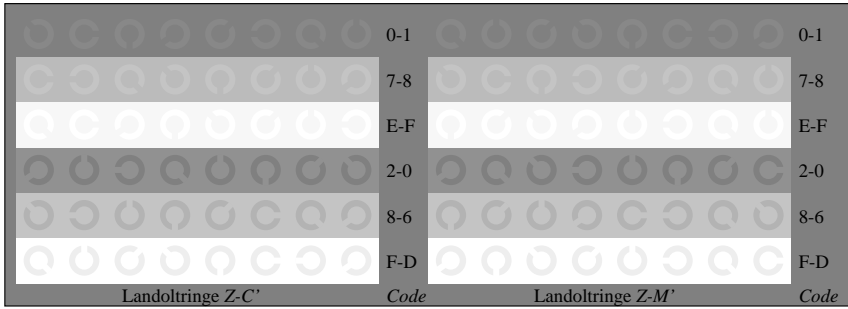
Ee070-7, Bild B7N: Landoltringe $N-J, W-N$; PS-Operator $rgb^* setrgbcolor$



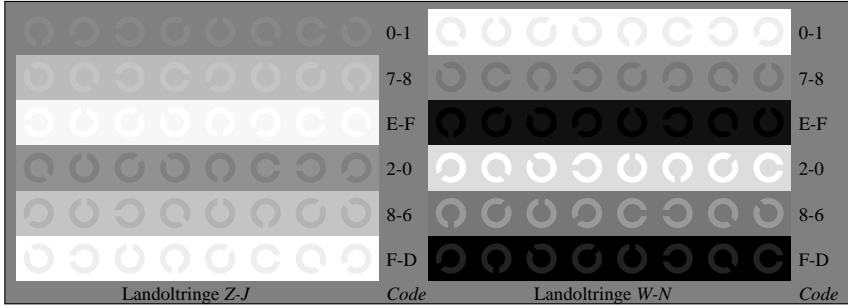
Ee071-1, Bild B4Z: 16 gleichabständige Stufen $Z-C'$, $Z-M'$, $Z-J$, $W-N$; PS-Operator $rgb^* setrgbcolor$



Ee071-3, Bild B5Z: Schrift und Landoltringe N, C', M', J, W ; PS-Operator $rgb^* setrgbcolor$



Ee071-5, Bild B6Z: Landoltringe $Z-C'$, $Z-M'$; PS-Operator $rgb^* setrgbcolor$



Ee071-7, Bild B7Z: Landoltringe $Z-J, W-N$; PS-Operator $rgb^* setrgbcolor$