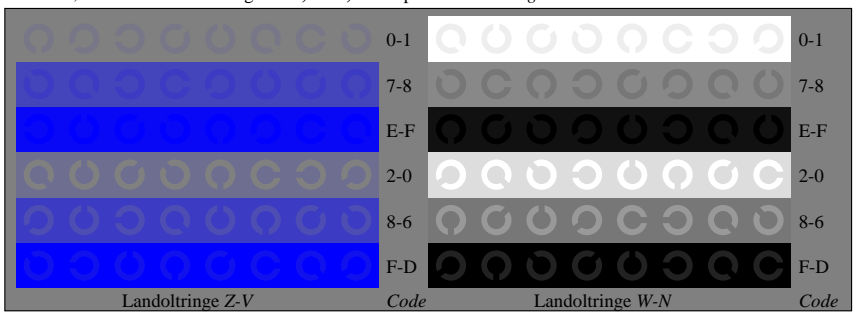
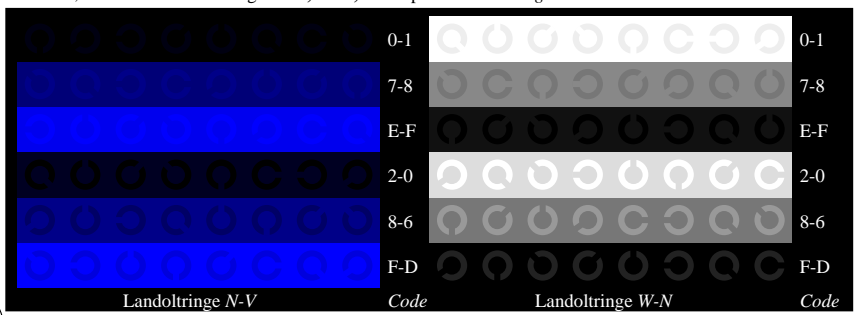
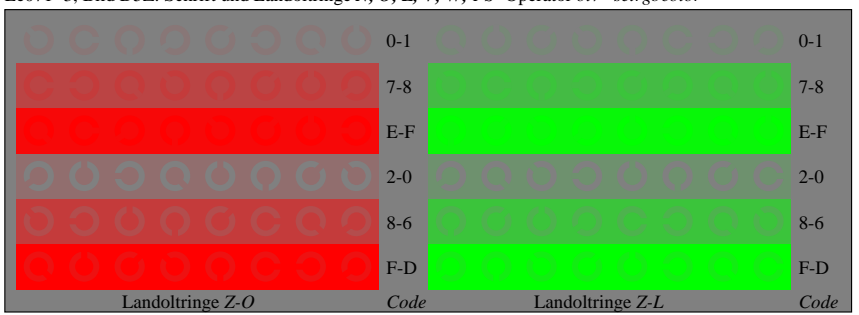
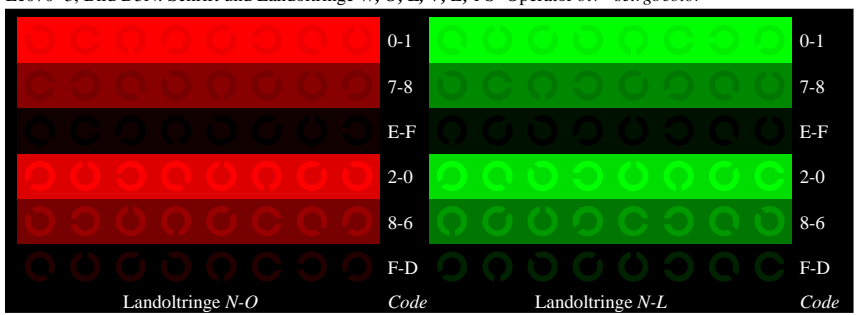
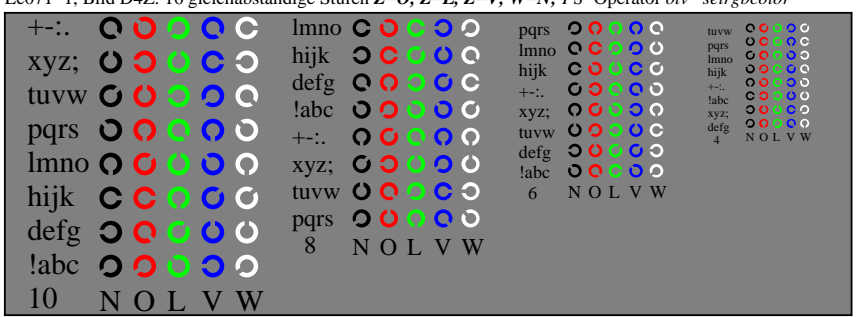
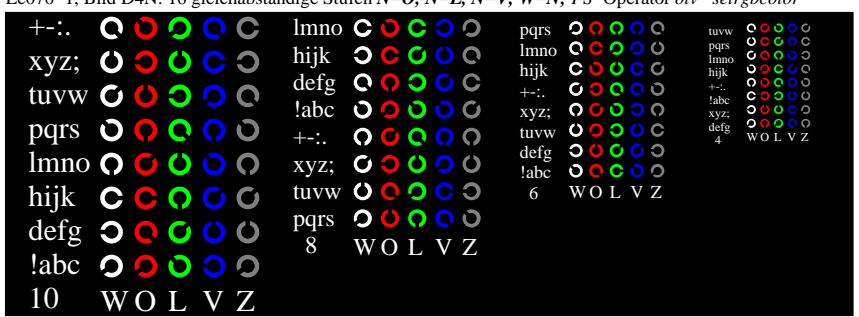
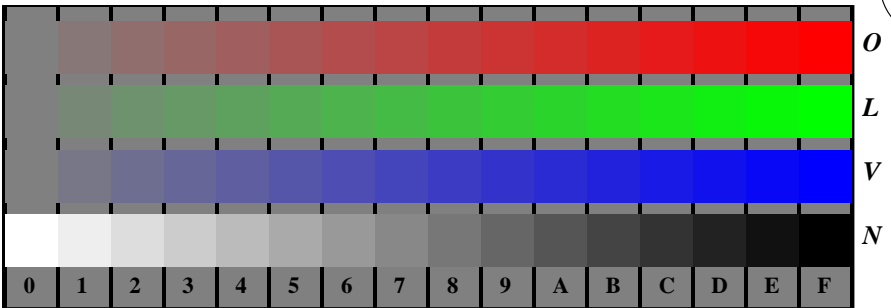
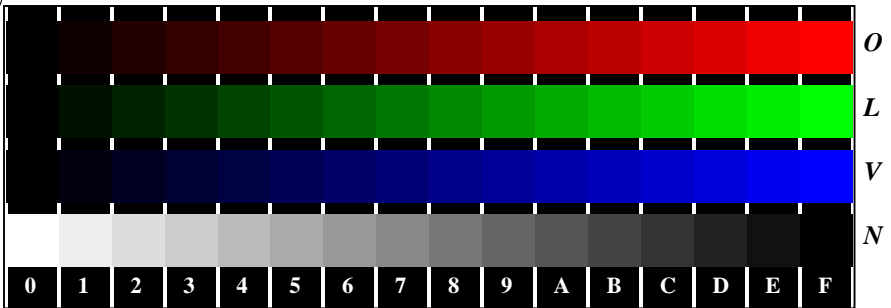
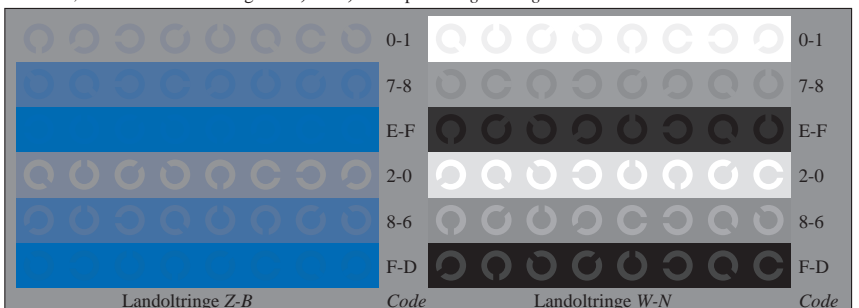
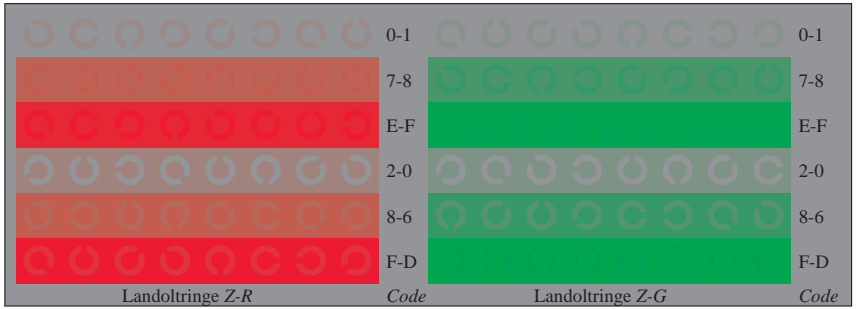
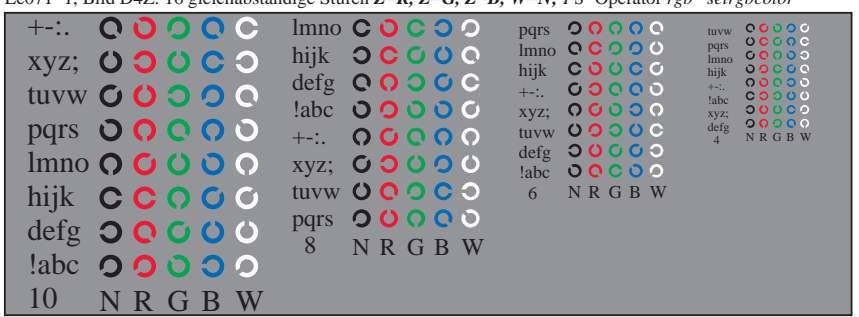
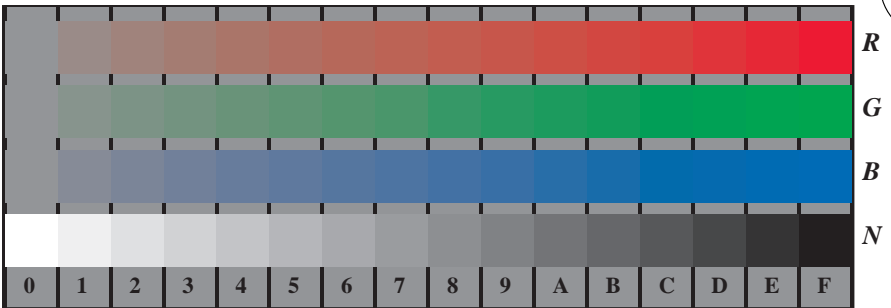
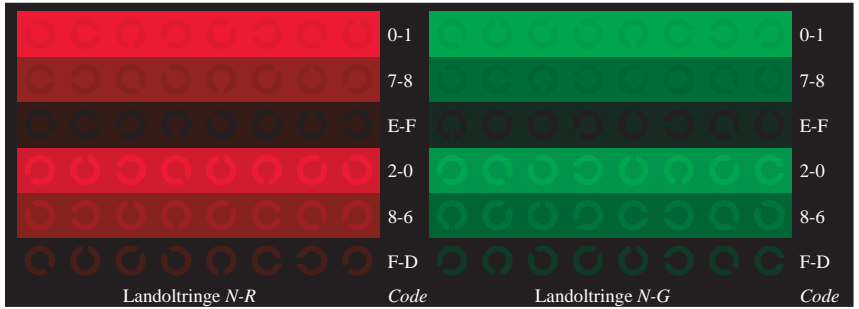
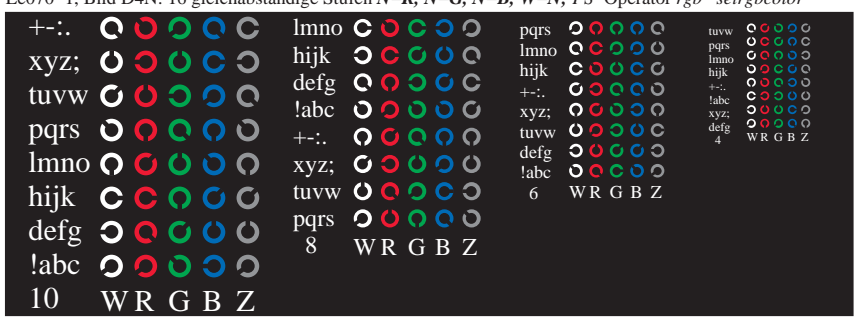
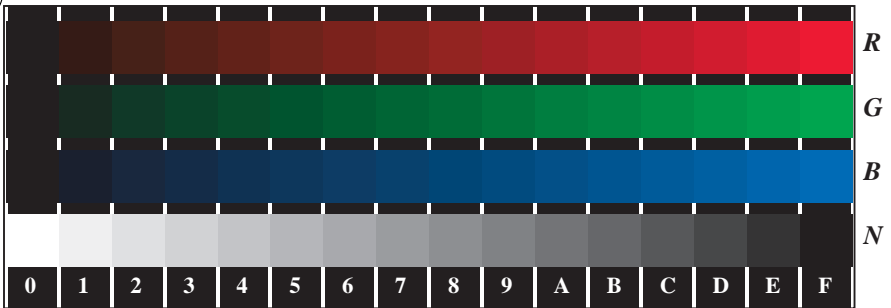
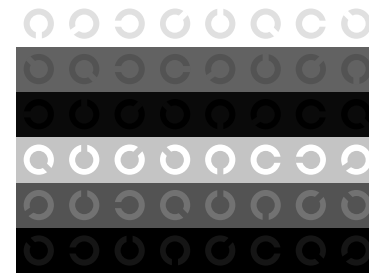
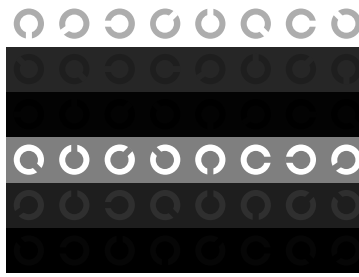
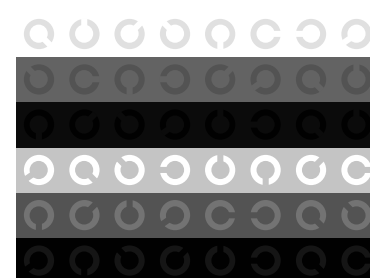
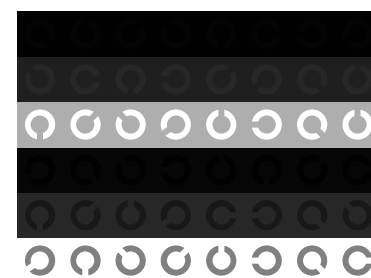
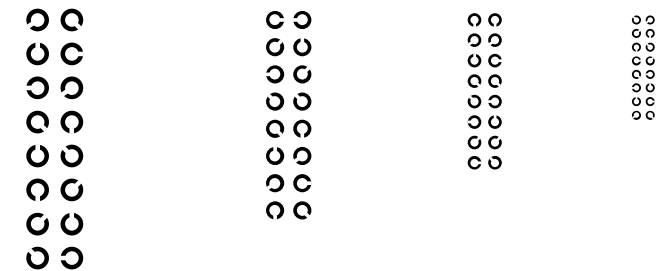
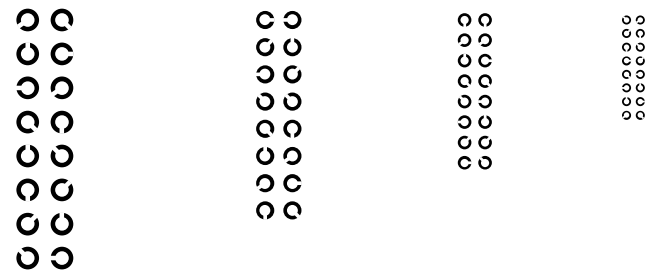


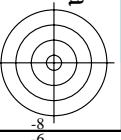
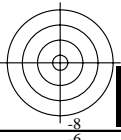
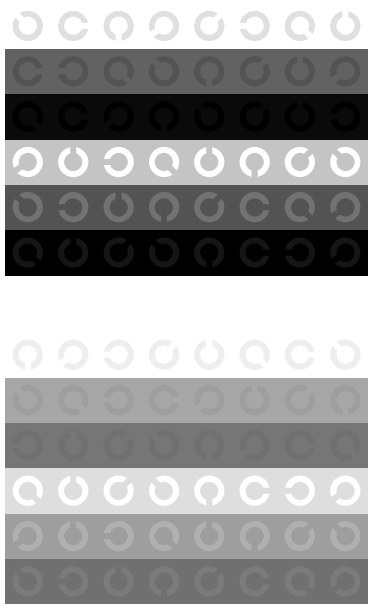
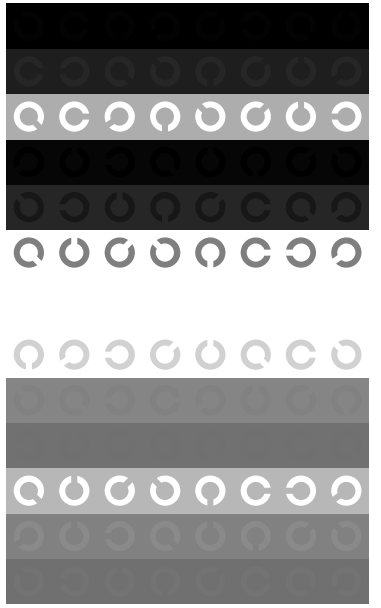
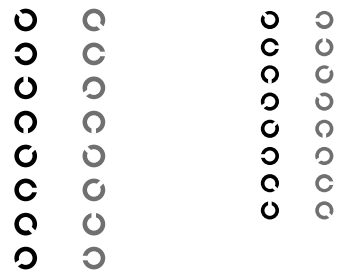
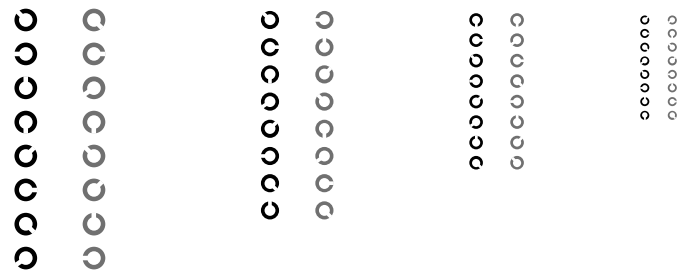
Siehe ähnliche Dateien: <http://www.ps.bam.de/Fg07/>; www.ps.bam.de/Fg07/Version 2.1, io=1,1, Colspx=1
 Technische Information: <http://www.ps.bam.de>

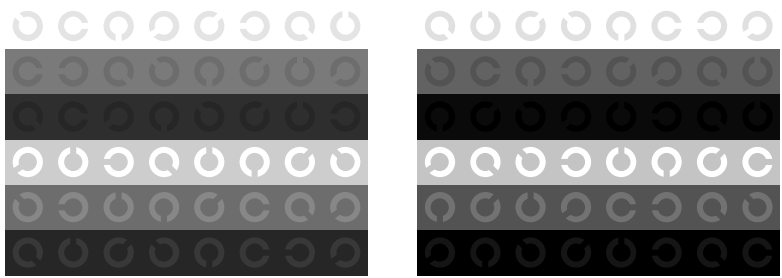
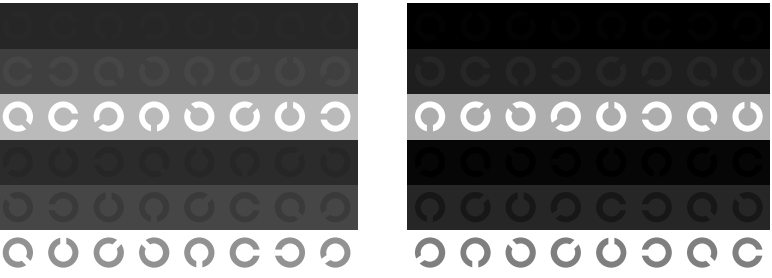
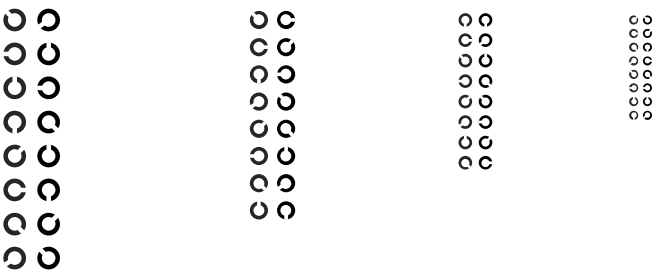
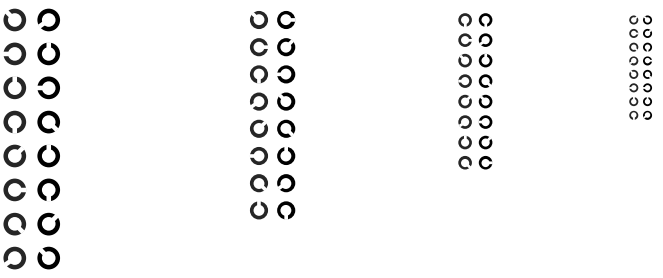
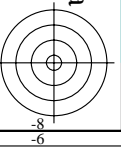
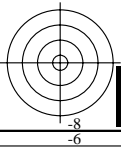
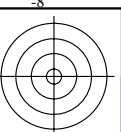
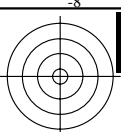
BAM-Registrierung: 20080901-Fg07/10L/L07G00NP.PS/ .PDF BAM-Material: Code=rh4ta
 Anwendung für Beurteilung und Messung von Drucker- oder Monitorssystemen



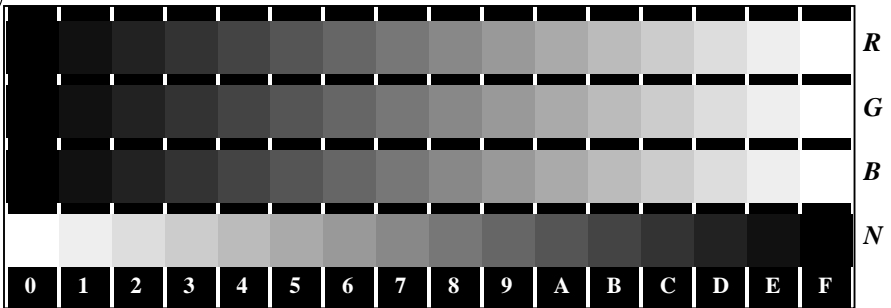




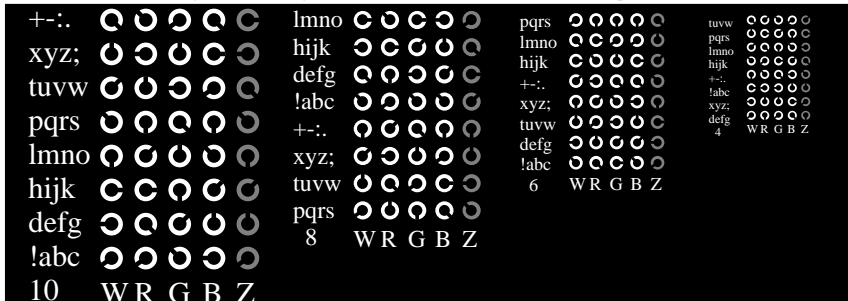




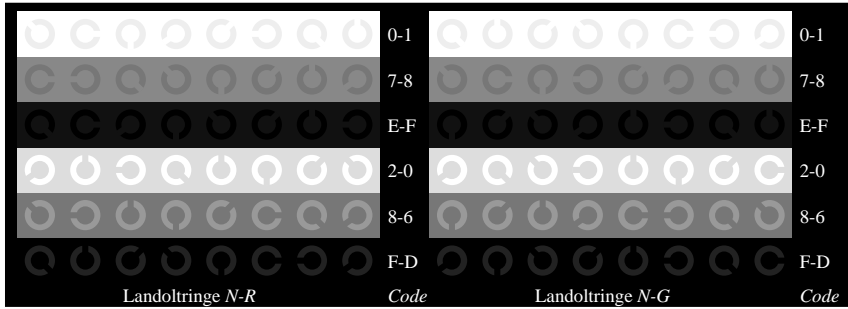
Siehe ähnliche Dateien: <http://www.ps.bam.de/Fg07/>; www.ps.bam.de/Fg.HTM
Technische Information: <http://www.ps.bam.de> Version 2.1, io=1,1, Colspx=1



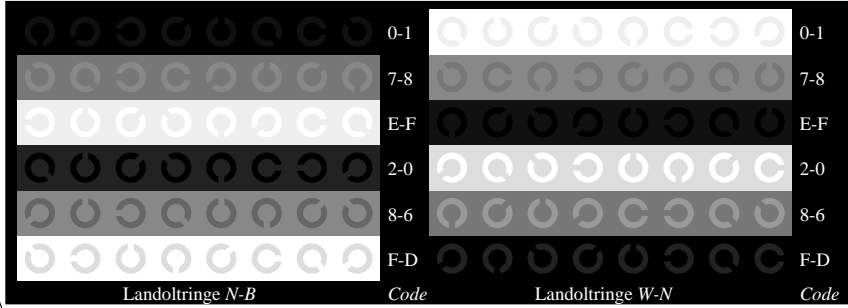
Ee070-1, Bild D4N: 16 gleichabständige Stufen N-R, N-G, N-B, W-N; PS-Operator rgb* setrgbcolor



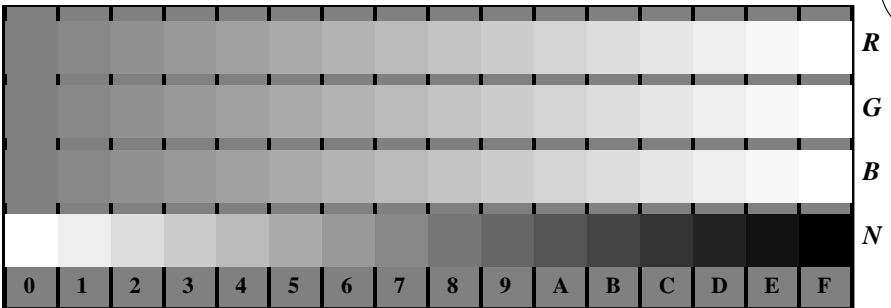
Ee070-3, Bild D5N: Schrift und Landoltringe W, R, G, B, Z; PS-Operator rgb* setrgbcolor



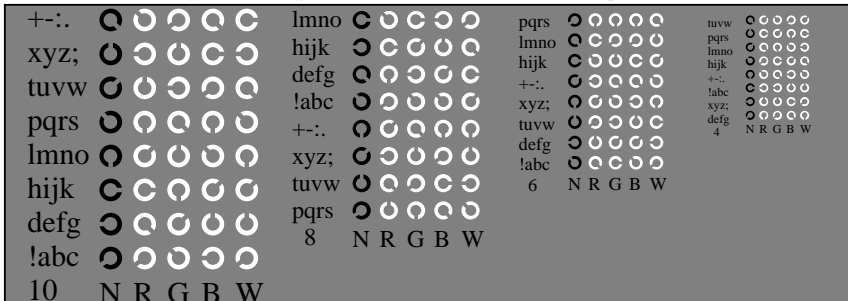
Ee070-5, Bild D6N: Landoltringe N-R, N-G; PS-Operator rgb* setrgbcolor



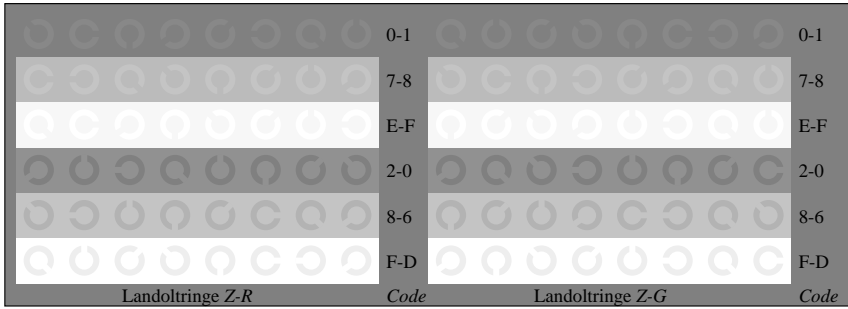
Ee070-7, Bild D7N: Landoltringe N-B, W-N; PS-Operator rgb* setrgbcolor



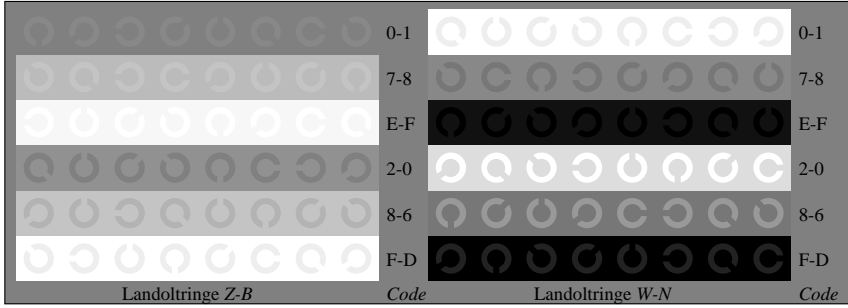
Ee071-1, Bild D4Z: 16 gleichabständige Stufen Z-R, Z-G, Z-B, W-N; PS-Operator rgb* setrgbcolor



Ee071-3, Bild D5Z: Schrift und Landoltringe N, R, G, B, W; PS-Operator rgb* setrgbcolor



Ee071-5, Bild D6Z: Landoltringe Z-R, Z-G; PS-Operator rgb* setrgbcolor



Ee071-7, Bild D7Z: Landoltringe Z-B, W-N; PS-Operator rgb* setrgbcolor