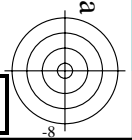
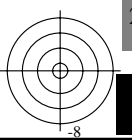
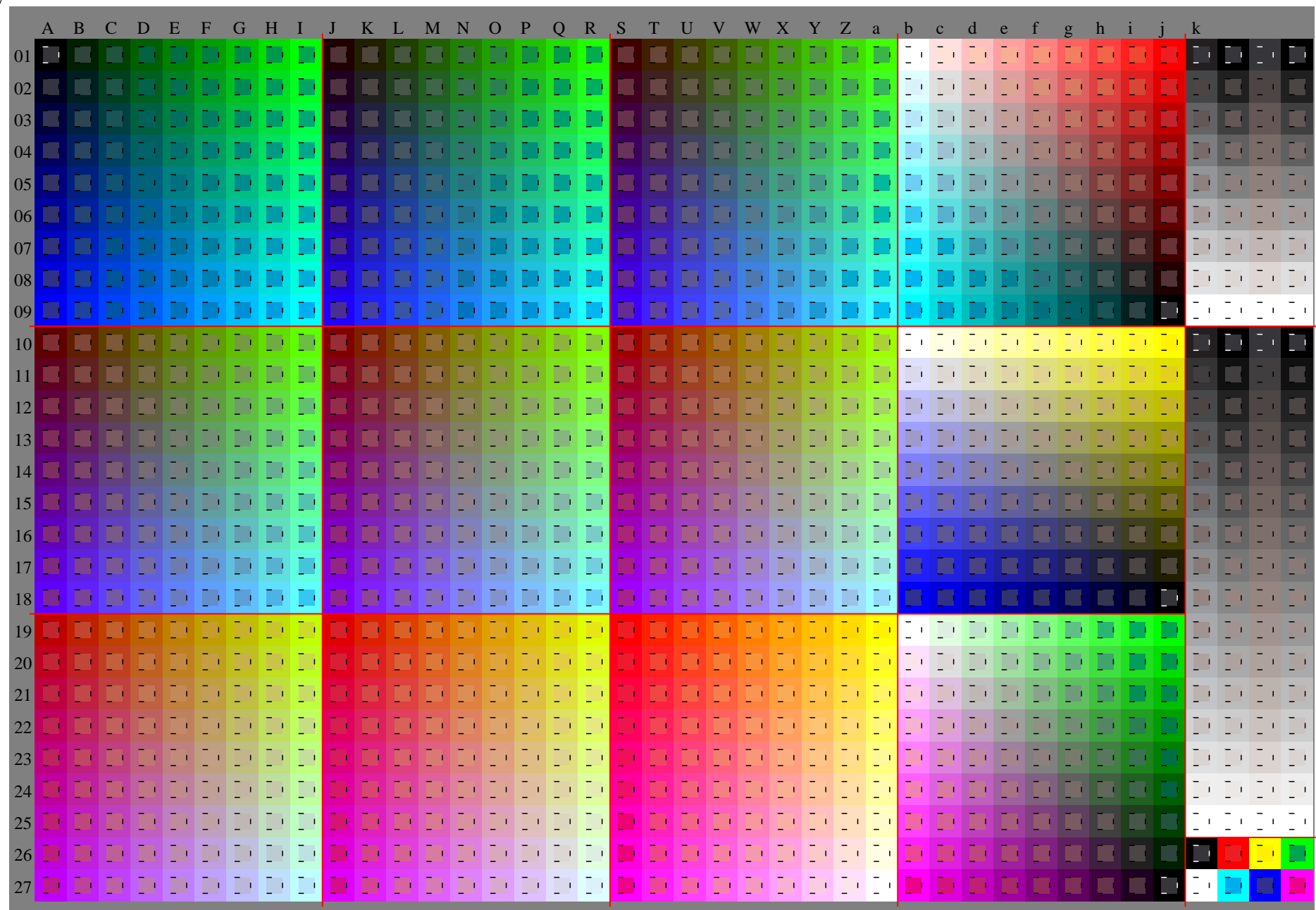
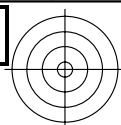
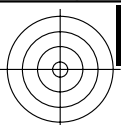


Siehe ähnliche Dateien: <http://www.ps.bam.de/Fg59/>; www.ps.bam.de/Fg59/HTM
Technische Information: <http://www.ps.bam.de> Version 2.1, io=1,1, ColSpX=1

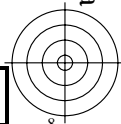
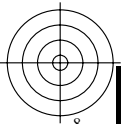
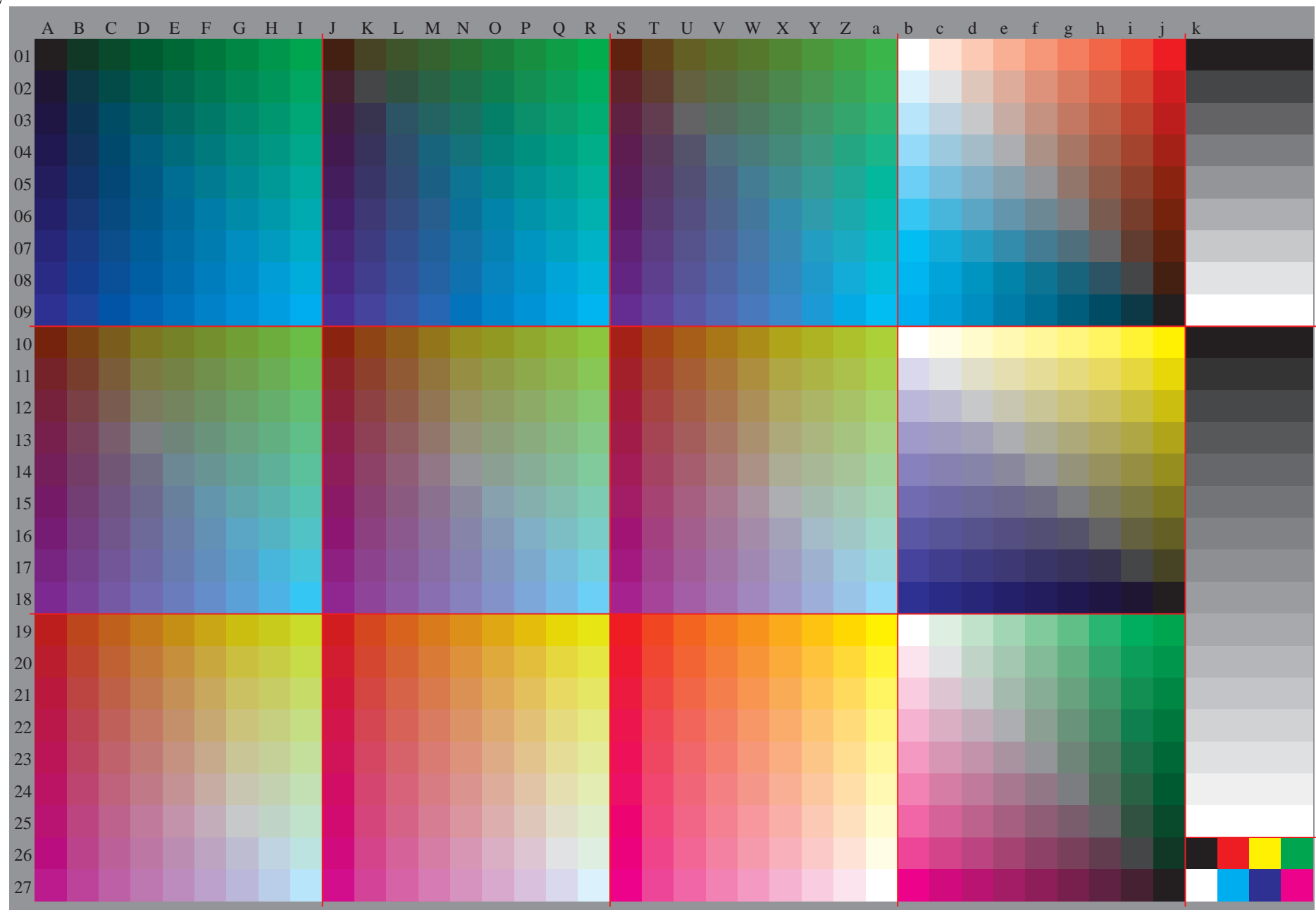
BAM-Registrierung: 20081001-Fg59/10L/L59g00NA.TXT/ .PS BAM-Material: Code=rh4ta
Anwendung für Beurteilung und Messung von Drucker- oder Monitorsystemen





Siehe ähnliche Dateien: <http://www.ps.bam.de/Fg59/>; www.ps.bam.de/Fg59/HTM
Technische Information: <http://www.ps.bam.de> Version 2.1, io=1,1, ColSpX=1

BAM-Registrierung: 20081001-Fg59/10L/L59g00NA.TXT/ .PS BAM-Material: Code=rh4ta
Anwendung für Beurteilung und Messung von Drucker- oder Monitorsystemen



Siehe ähnliche Dateien: <http://www.ps.bam.de/Fg59/>; [www.ps.bam.de/Version 2.1, io=1.1, Colspx=1](http://www.ps.bam.de/Version2.1,io=1.1,Colspx=1)
Technische Information: <http://www.ps.bam.de>

BAM-Registrierung: 20081001-Fg59/10L/L59g00NA.TXT/ .PS BAM-Material: Code=thata4ta
Anwendung für Beurteilung und Messung von Drucker- oder Monitorsystemen

Table with 27 rows (01-27) and 27 columns (A-Z, a-z). Each cell contains numerical values representing colorimetric data for different printer/monitor combinations.

Siehe ähnliche Dateien: <http://www.ps.bam.de/Fg59/>; [www.ps.bam.de/Version 2.1, io=1,1, Colspx=1](http://www.ps.bam.de/Version2.1,io=1,1,Colspx=1)
Technische Information: <http://www.ps.bam.de>

Table with 28 columns (A-Z, a-z) and 28 rows (01-27). Each cell contains numerical data representing color calibration values. The table is bordered by a grid of red and black lines.

BAM-Registrierung: 20081001-Fg59/10L/L59g00NA.TXT/ .PS BAM-Material: Code=thata
Anwendung für Beurteilung und Messung von Drucker- oder Monitorsystemen

Siehe ähnliche Dateien: <http://www.ps.bam.de/Fg59/>; www.ps.bam.de/Fg59/10L/L59g00NA.TXT/ .PS BAM-Material: Code=thata4
Technische Information: [http://www.ps.bam.de/Version 2.1, io=1.1, ColSpX=1](http://www.ps.bam.de/Version%202.1,%20io=1.1,%20ColSpX=1)

BAM-Registrierung: 20081001-Fg59/10L/L59g00NA.TXT/ .PS BAM-Material: Code=thata4
Anwendung für Beurteilung und Messung von Drucker- oder Monitorsystemen

Table with 27 rows (01-27) and 48 columns (A-LAB*LAB*a). Each cell contains numerical data representing color calibration values.

Siehe ähnliche Dateien: <http://www.ps.bam.de/Fg59/>; [www.ps.bam.de/Version 2.1, io=1.1, Colspx=1](http://www.ps.bam.de/Version%202.1,%20io=1.1,Colspx=1)
Technische Information: <http://www.ps.bam.de>

BAM-Registrierung: 20081001-Fg59/10L/L59g00NA.TXT/ .PS BAM-Material: Code=thata
Anwendung für Beurteilung und Messung von Drucker- oder Monitorsystemen

Table with 27 rows (01-27) and 48 columns (A-LAB*LCH*a). Each cell contains numerical data representing colorimetric measurements.

Siehe ähnliche Dateien: <http://www.ps.bam.de/Fg59/>; [www.ps.bam.de/Version 2.1, io=1.1, Colspx=1](http://www.ps.bam.de/Version2.1,io=1.1,Colspx=1)
Technische Information: <http://www.ps.bam.de>

BAM-Registrierung: 20081001-Fg59/10L/L59g00NA.TXT/ .PS BAM-Material: Code=thata
Anwendung für Beurteilung und Messung von Drucker- oder Monitorsystemen

Table with 28 columns (A-Z, lab*tch*) and 28 rows (01-27). Each cell contains numerical data representing colorimetric values.

Siehe ähnliche Dateien: <http://www.ps.bam.de/Fg59/>; [www.ps.bam.de/Version 2.1, io=1.1, Colspx=1](http://www.ps.bam.de/Version%202.1,%20io=1.1,Colspx=1)
Technische Information: [http://www.ps.bam.de/Version 2.1, io=1.1, Colspx=1](http://www.ps.bam.de/Version%202.1,%20io=1.1,Colspx=1)

Table with columns A-Z and a*icue and rows 01-27. Each cell contains a color code (e.g., 0.0, 0.13, 0.25, 0.38, 0.5, 0.63, 0.75, 0.88, 1.0, 1.13, 1.25, 1.38, 1.5, 1.63, 1.75, 1.88, 2.0, 2.13, 2.25, 2.38, 2.5, 2.63, 2.75, 2.88, 3.0, 3.13, 3.25, 3.38, 3.5, 3.63, 3.75, 3.88, 4.0, 4.13, 4.25, 4.38, 4.5, 4.63, 4.75, 4.88, 5.0, 5.13, 5.25, 5.38, 5.5, 5.63, 5.75, 5.88, 6.0, 6.13, 6.25, 6.38, 6.5, 6.63, 6.75, 6.88, 7.0, 7.13, 7.25, 7.38, 7.5, 7.63, 7.75, 7.88, 8.0, 8.13, 8.25, 8.38, 8.5, 8.63, 8.75, 8.88, 9.0, 9.13, 9.25, 9.38, 9.5, 9.63, 9.75, 9.88, 10.0, 10.13, 10.25, 10.38, 10.5, 10.63, 10.75, 10.88, 11.0, 11.13, 11.25, 11.38, 11.5, 11.63, 11.75, 11.88, 12.0, 12.13, 12.25, 12.38, 12.5, 12.63, 12.75, 12.88, 13.0, 13.13, 13.25, 13.38, 13.5, 13.63, 13.75, 13.88, 14.0, 14.13, 14.25, 14.38, 14.5, 14.63, 14.75, 14.88, 15.0, 15.13, 15.25, 15.38, 15.5, 15.63, 15.75, 15.88, 16.0, 16.13, 16.25, 16.38, 16.5, 16.63, 16.75, 16.88, 17.0, 17.13, 17.25, 17.38, 17.5, 17.63, 17.75, 17.88, 18.0, 18.13, 18.25, 18.38, 18.5, 18.63, 18.75, 18.88, 19.0, 19.13, 19.25, 19.38, 19.5, 19.63, 19.75, 19.88, 20.0, 20.13, 20.25, 20.38, 20.5, 20.63, 20.75, 20.88, 21.0, 21.13, 21.25, 21.38, 21.5, 21.63, 21.75, 21.88, 22.0, 22.13, 22.25, 22.38, 22.5, 22.63, 22.75, 22.88, 23.0, 23.13, 23.25, 23.38, 23.5, 23.63, 23.75, 23.88, 24.0, 24.13, 24.25, 24.38, 24.5, 24.63, 24.75, 24.88, 25.0, 25.13, 25.25, 25.38, 25.5, 25.63, 25.75, 25.88, 26.0, 26.13, 26.25, 26.38, 26.5, 26.63, 26.75, 26.88, 27.0, 27.13, 27.25, 27.38, 27.5, 27.63, 27.75, 27.88, 28.0, 28.13, 28.25, 28.38, 28.5, 28.63, 28.75, 28.88, 29.0, 29.13, 29.25, 29.38, 29.5, 29.63, 29.75, 29.88, 30.0, 30.13, 30.25, 30.38, 30.5, 30.63, 30.75, 30.88, 31.0, 31.13, 31.25, 31.38, 31.5, 31.63, 31.75, 31.88, 32.0, 32.13, 32.25, 32.38, 32.5, 32.63, 32.75, 32.88, 33.0, 33.13, 33.25, 33.38, 33.5, 33.63, 33.75, 33.88, 34.0, 34.13, 34.25, 34.38, 34.5, 34.63, 34.75, 34.88, 35.0, 35.13, 35.25, 35.38, 35.5, 35.63, 35.75, 35.88, 36.0, 36.13, 36.25, 36.38, 36.5, 36.63, 36.75, 36.88, 37.0, 37.13, 37.25, 37.38, 37.5, 37.63, 37.75, 37.88, 38.0, 38.13, 38.25, 38.38, 38.5, 38.63, 38.75, 38.88, 39.0, 39.13, 39.25, 39.38, 39.5, 39.63, 39.75, 39.88, 40.0, 40.13, 40.25, 40.38, 40.5, 40.63, 40.75, 40.88, 41.0, 41.13, 41.25, 41.38, 41.5, 41.63, 41.75, 41.88, 42.0, 42.13, 42.25, 42.38, 42.5, 42.63, 42.75, 42.88, 43.0, 43.13, 43.25, 43.38, 43.5, 43.63, 43.75, 43.88, 44.0, 44.13, 44.25, 44.38, 44.5, 44.63, 44.75, 44.88, 45.0, 45.13, 45.25, 45.38, 45.5, 45.63, 45.75, 45.88, 46.0, 46.13, 46.25, 46.38, 46.5, 46.63, 46.75, 46.88, 47.0, 47.13, 47.25, 47.38, 47.5, 47.63, 47.75, 47.88, 48.0, 48.13, 48.25, 48.38, 48.5, 48.63, 48.75, 48.88, 49.0, 49.13, 49.25, 49.38, 49.5, 49.63, 49.75, 49.88, 50.0, 50.13, 50.25, 50.38, 50.5, 50.63, 50.75, 50.88, 51.0, 51.13, 51.25, 51.38, 51.5, 51.63, 51.75, 51.88, 52.0, 52.13, 52.25, 52.38, 52.5, 52.63, 52.75, 52.88, 53.0, 53.13, 53.25, 53.38, 53.5, 53.63, 53.75, 53.88, 54.0, 54.13, 54.25, 54.38, 54.5, 54.63, 54.75, 54.88, 55.0, 55.13, 55.25, 55.38, 55.5, 55.63, 55.75, 55.88, 56.0, 56.13, 56.25, 56.38, 56.5, 56.63, 56.75, 56.88, 57.0, 57.13, 57.25, 57.38, 57.5, 57.63, 57.75, 57.88, 58.0, 58.13, 58.25, 58.38, 58.5, 58.63, 58.75, 58.88, 59.0, 59.13, 59.25, 59.38, 59.5, 59.63, 59.75, 59.88, 60.0, 60.13, 60.25, 60.38, 60.5, 60.63, 60.75, 60.88, 61.0, 61.13, 61.25, 61.38, 61.5, 61.63, 61.75, 61.88, 62.0, 62.13, 62.25, 62.38, 62.5, 62.63, 62.75, 62.88, 63.0, 63.13, 63.25, 63.38, 63.5, 63.63, 63.75, 63.88, 64.0, 64.13, 64.25, 64.38, 64.5, 64.63, 64.75, 64.88, 65.0, 65.13, 65.25, 65.38, 65.5, 65.63, 65.75, 65.88, 66.0, 66.13, 66.25, 66.38, 66.5, 66.63, 66.75, 66.88, 67.0, 67.13, 67.25, 67.38, 67.5, 67.63, 67.75, 67.88, 68.0, 68.13, 68.25, 68.38, 68.5, 68.63, 68.75, 68.88, 69.0, 69.13, 69.25, 69.38, 69.5, 69.63, 69.75, 69.88, 70.0, 70.13, 70.25, 70.38, 70.5, 70.63, 70.75, 70.88, 71.0, 71.13, 71.25, 71.38, 71.5, 71.63, 71.75, 71.88, 72.0, 72.13, 72.25, 72.38, 72.5, 72.63, 72.75, 72.88, 73.0, 73.13, 73.25, 73.38, 73.5, 73.63, 73.75, 73.88, 74.0, 74.13, 74.25, 74.38, 74.5, 74.63, 74.75, 74.88, 75.0, 75.13, 75.25, 75.38, 75.5, 75.63, 75.75, 75.88, 76.0, 76.13, 76.25, 76.38, 76.5, 76.63, 76.75, 76.88, 77.0, 77.13, 77.25, 77.38, 77.5, 77.63, 77.75, 77.88, 78.0, 78.13, 78.25, 78.38, 78.5, 78.63, 78.75, 78.88, 79.0, 79.13, 79.25, 79.38, 79.5, 79.63, 79.75, 79.88, 80.0, 80.13, 80.25, 80.38, 80.5, 80.63, 80.75, 80.88, 81.0, 81.13, 81.25, 81.38, 81.5, 81.63, 81.75, 81.88, 82.0, 82.13, 82.25, 82.38, 82.5, 82.63, 82.75, 82.88, 83.0, 83.13, 83.25, 83.38, 83.5, 83.63, 83.75, 83.88, 84.0, 84.13, 84.25, 84.38, 84.5, 84.63, 84.75, 84.88, 85.0, 85.13, 85.25, 85.38, 85.5, 85.63, 85.75, 85.88, 86.0, 86.13, 86.25, 86.38, 86.5, 86.63, 86.75, 86.88, 87.0, 87.13, 87.25, 87.38, 87.5, 87.63, 87.75, 87.88, 88.0, 88.13, 88.25, 88.38, 88.5, 88.63, 88.75, 88.88, 89.0, 89.13, 89.25, 89.38, 89.5, 89.63, 89.75, 89.88, 90.0, 90.13, 90.25, 90.38, 90.5, 90.63, 90.75, 90.88, 91.0, 91.13, 91.25, 91.38, 91.5, 91.63, 91.75, 91.88, 92.0, 92.13, 92.25, 92.38, 92.5, 92.63, 92.75, 92.88, 93.0, 93.13, 93.25, 93.38, 93.5, 93.63, 93.75, 93.88, 94.0, 94.13, 94.25, 94.38, 94.5, 94.63, 94.75, 94.88, 95.0, 95.13, 95.25, 95.38, 95.5, 95.63, 95.75, 95.88, 96.0, 96.13, 96.25, 96.38, 96.5, 96.63, 96.75, 96.88, 97.0, 97.13, 97.25, 97.38, 97.5, 97.63, 97.75, 97.88, 98.0, 98.13, 98.25, 98.38, 98.5, 98.63, 98.75, 98.88, 99.0, 99.13, 99.25, 99.38, 99.5, 99.63, 99.75, 99.88, 100.0, 100.13, 100.25, 100.38, 100.5, 100.63, 100.75, 100.88, 101.0, 101.13, 101.25, 101.38, 101.5, 101.63, 101.75, 101.88, 102.0, 102.13, 102.25, 102.38, 102.5, 102.63, 102.75, 102.88, 103.0, 103.13, 103.25, 103.38, 103.5, 103.63, 103.75, 103.88, 104.0, 104.13, 104.25, 104.38, 104.5, 104.63, 104.75, 104.88, 105.0, 105.13, 105.25, 105.38, 105.5, 105.63, 105.75, 105.88, 106.0, 106.13, 106.25, 106.38, 106.5, 106.63, 106.75, 106.88, 107.0, 107.13, 107.25, 107.38, 107.5, 107.63, 107.75, 107.88, 108.0, 108.13, 108.25, 108.38, 108.5, 108.63, 108.75, 108.88, 109.0, 109.13, 109.25, 109.38, 109.5, 109.63, 109.75, 109.88, 110.0, 110.13, 110.25, 110.38, 110.5, 110.63, 110.75, 110.88, 111.0, 111.13, 111.25, 111.38, 111.5, 111.63, 111.75, 111.88, 112.0, 112.13, 112.25, 112.38, 112.5, 112.63, 112.75, 112.88, 113.0, 113.13, 113.25, 113.38, 113.5, 113.63, 113.75, 113.88, 114.0, 114.13, 114.25, 114.38, 114.5, 114.63, 114.75, 114.88, 115.0, 115.13, 115.25, 115.38, 115.5, 115.63, 115.75, 115.88, 116.0, 116.13, 116.25, 116.38, 116.5, 116.63, 116.75, 116.88, 117.0, 117.13, 117.25, 117.38, 117.5, 117.63, 117.75, 117.88, 118.0, 118.13, 118.25, 118.38, 118.5, 118.63, 118.75, 118.88, 119.0, 119.13, 119.25, 119.38, 119.5, 119.63, 119.75, 119.88, 120.0, 120.13, 120.25, 120.38, 120.5, 120.63, 120.75, 120.88, 121.0, 121.13, 121.25, 121.38, 121.5, 121.63, 121.75, 121.88, 122.0, 122.13, 122.25, 122.38, 122.5, 122.63, 122.75, 122.88, 123.0, 123.13, 123.25, 123.38, 123.5, 123.63, 123.75, 123.88, 124.0, 124.13, 124.25, 124.38, 124.5, 124.63, 124.75, 124.88, 125.0, 125.13, 125.25, 125.38, 125.5, 125.63, 125.75, 125.88, 126.0, 126.13, 126.25, 126.38, 126.5, 126.63, 126.75, 126.88, 127.0, 127.13, 127.25, 127.38, 127.5, 127.63, 127.75, 127.88, 128.0, 128.13, 128.25, 128.38, 128.5, 128.63, 128.75, 128.88, 129.0, 129.13, 129.25, 129.38, 129.5, 129.63, 129.75, 129.88, 130.0, 130.13, 130.25, 130.38, 130.5, 130.63, 130.75, 130.88, 131.0, 131.13, 131.25, 131.38, 131.5, 131.63, 131.75, 131.88, 132.0, 132.13, 132.25, 132.38, 132.5, 132.63, 132.75, 132.88, 133.0, 133.13, 133.25, 133.38, 133.5, 133.63, 133.75, 133.88, 134.0, 134.13, 134.25, 134.38, 134.5, 134.63, 134.75, 134.88, 135.0, 135.13, 135.25, 135.38, 135.5, 135.63, 135.75, 135.88, 136.0, 136.13, 136.25, 136.38, 136.5, 136.63, 136.75, 136.88, 137.0, 137.13, 137.25, 137.38, 137.5, 137.63, 137.75, 137.88, 138.0, 138.13, 138.25, 138.38, 138.5, 138.63, 138.75, 138.88, 139.0, 139.13, 139.25, 139.38, 139.5, 139.63, 139.75, 139.88, 140.0, 140.13, 140.25, 140.38, 140.5, 140.63, 140.75, 140.88, 141.0, 141.13, 141.25, 141.38, 141.5, 141.63, 141.75, 141.88, 142.0, 142.13, 142.25, 142.38, 142.5, 142.63, 142.75, 142.88, 143.0, 143.13, 143.25, 143.38, 143.5, 143.63, 143.75, 143.88, 144.0, 144.13, 144.25, 144.38, 144.5, 144.63, 144.75, 144.88, 145.0, 145.13, 145.25, 145.38, 145.5, 145.63, 145.75, 145.88, 146.0, 146.13, 146.25, 146.38, 146.5, 146.63, 146.75, 146.88, 147.0, 147.13, 147.25, 147.38, 147.5, 147.63, 147.75, 147.88, 148.0, 148.13, 148.25, 148.38, 148.5, 148.63, 148.75, 148.88, 149.0, 149.13, 149.25, 149.38, 149.5, 149.63, 149.75, 149.88, 150.0, 150.13, 150.25, 150.38, 150.5, 150.63, 150.75, 150.88, 151.0, 151.13, 151.25, 151.38, 151.5, 151.63, 151.75, 151.88, 152.0, 152.13, 152.25, 152.38, 152.5, 152.63, 152.75, 152.88, 153.0, 153.13, 153.25, 153.38, 153.5, 153.63, 153.75, 153.88, 154.0, 154.13, 154.25, 154.38, 154.5, 154.63, 154.75, 154.88, 155.0, 155.13, 155.25, 155.38, 155.5, 155.63, 155.75, 155.88, 156.0, 156.13, 156.25, 156.38, 156.5, 156.63, 156.75, 156.88, 157.0, 157.13, 157.25, 157.38, 157.5, 157.63, 157.75, 157.88, 158.0, 158.13, 158.25, 158.38, 158.5, 158.63, 158.75, 158.88, 159.0, 159.13, 159.25, 159.38, 159.5, 159.63, 159.75, 159.88, 160.0, 160.13, 160.25, 160.38, 160.5, 160.63, 160.75, 160.88, 161.0, 161.13, 161.25, 161.38, 161.5, 161.63, 161.75, 161.88, 162.0, 162.13, 162.25, 162.38, 162.5, 162.63, 162.75, 162.88, 163.0, 163.13, 163.25, 163.38, 163.5, 163.63, 163.75, 163.88, 164.0, 164.13, 164.25, 164.38, 164.5, 164.63, 164.75, 164.88, 165.0, 165.13, 165.25, 165.38, 165.5, 165.63, 165.75, 165.88, 166.0, 166.13, 166.25, 166.38, 166.5, 166.63, 166.75, 166.88, 167.0, 167.13, 167.25, 167.38, 167.5, 167.63, 167.75, 167.88, 168.0, 168.13, 168.25, 168.38, 168.5, 168.63, 168.75, 168.88, 169.0, 169.13, 169.25, 169.38, 169.5, 169.63, 169.75, 169.88, 170.0, 170.13, 170.25, 170.38, 170.5, 170.63, 170.75, 170.88, 171.0, 171.13, 171.25, 171.38, 171.5, 171.63, 171.75, 171.88, 172.0, 172.13, 172.25, 172.38, 172.5, 172.63, 172.75, 172.88, 173.0, 173.13, 173.25, 173.38, 173.5, 173.63, 173.75, 173.88, 174.0, 174.13, 174.25, 174.38, 174.5, 174.63, 174.75, 174.88, 175.0, 175.13, 175.25, 175.38, 175.5, 175.63, 175.75, 175.88, 176.0, 176.13, 176.25, 176.38, 176.5, 176.63, 176.75, 176.88, 177.0, 177.13, 177.25, 177.38, 177.5, 177.63, 177.75, 177.88, 178.0, 178.13, 178.25, 178.38, 178.5, 178.63, 178.75, 178.88, 179.0, 179.13, 179.25, 179.38, 179.5, 179.63, 179.75, 179.88, 180.0, 180.13, 180.25, 180.38, 180.5, 180.63, 180.75, 180.88, 181.0, 181.13, 181.25, 181.38, 181.5, 181.63, 181.75, 181.88, 182.0, 182.13, 182.25, 182.38, 182.5, 182.63, 182.75, 182.88, 183.0, 183.13, 183.25, 183.38, 183.5, 183.63, 183.75, 183.88, 184.0, 184.13, 184.25, 184.38, 184.5, 184.63, 184.75, 184.88, 185.0, 185.13, 185.25, 185.38, 185.5, 185.63, 185.75, 185.88, 186.0, 186.13, 186.25, 186.38, 186.5, 186.63, 186.75, 186.88, 187.0, 187.13, 187.25, 187.38, 187.5, 187.63, 187.75, 187.88, 188.0, 188.13, 188.25, 188.38, 188.5, 188.63, 188.75, 188.88, 189.0, 189.13, 189.25, 189.38, 189.5, 189.63, 189.75, 189.88, 190.0, 190.13, 190.25, 190.38, 190.5, 190.63, 190.75, 190.88, 191.0, 191.13, 191.25, 191.38, 191.5, 191.63, 191.75, 191.88, 192.0, 192.13, 192.25, 192.38, 192.5, 192.63, 192.75, 192.88, 193.0, 193.13, 193.25, 193.38, 193.5, 193.63, 193.75, 193.88, 194.0, 194.13, 194.25, 194.38, 194.5, 194.63, 194.75, 194.88, 195.0, 195.13, 195.25, 195.38, 195.5, 195.63, 195.75, 195.88, 196.0, 196.13, 196.25, 196.38, 196.5, 196.63, 196.75, 196.88, 197.0, 197.13, 197.25, 197.38, 197.5, 197.63, 197.75, 197.88, 198.0, 198.13, 198.25, 198.38, 198.5, 198.63, 198.75, 198.88, 199.0, 199.13, 199.25, 199.38, 199.5, 199.63, 199.75, 199.88, 200.0, 200.13, 200.25, 200.38, 200.5, 200.63, 200.75, 200.88, 201.0, 201.13, 201.25, 201.38, 201.5, 201.63, 201.75, 201.88, 202.0, 202.13, 202.25, 202.38, 202.5, 202.63, 202.75, 202.88, 203.0, 203.13, 203.25, 203.38, 203.5, 203.63, 203.75, 203.88, 204.0, 204.13, 204.25, 204.38, 204.5, 204.63, 204.75, 204.88, 205.0, 205.13, 205.25, 205.38, 205.5, 205.63, 205.75, 205.88, 206.0, 206.13, 206.25, 206.38, 206.5, 206.63, 206.75, 206.88, 207.0, 207.13, 207.25, 207.38, 207.5,

Siehe ähnliche Dateien: <http://www.ps.bam.de/Fg59/>; www.ps.bam.de/Fg59/10L/L59g00NA.TXT/ .PS BAM-Material: Code=thata
Technische Information: [http://www.ps.bam.de/Version 2.1, io=1,1, ColSpX=1](http://www.ps.bam.de/Version%202.1,%20io=1,1,%20ColSpX=1)

Table with columns A through LAB*LAB* and rows 01 through 27. Each cell contains numerical data representing colorimetric values for 16 different color patches.

BAM-Registrierung: 20081001-Fg59/10L/L59g00NA.TXT/ .PS BAM-Material: Code=thata
Anwendung für Beurteilung und Messung von Drucker- oder Monitorsystemen

Siehe ähnliche Dateien: <http://www.ps.bam.de/Fg59/>; [www.ps.bam.de/Version 2.1, io=1,1, Colspx=1](http://www.ps.bam.de/Version2.1,io=1,1,Colspx=1)
Technische Information: <http://www.ps.bam.de>

BAM-Registrierung: 20081001-Fg59/10L/L59g00NA.TXT/ .PS BAM-Material: Code=thata4ta
Anwendung für Beurteilung und Messung von Drucker- oder Monitorsystemen

Table with 28 columns (A-lab*oly*) and 28 rows (01-27). Each cell contains numerical values representing colorimetric data for various color patches.

