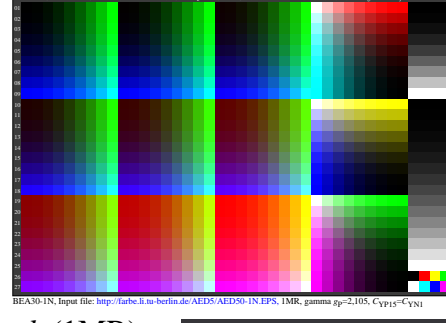
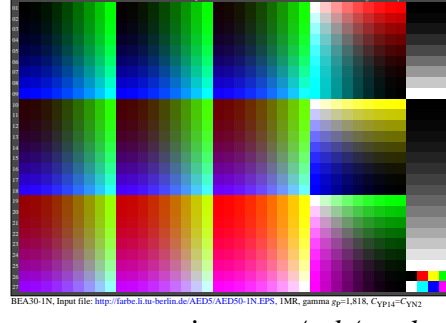
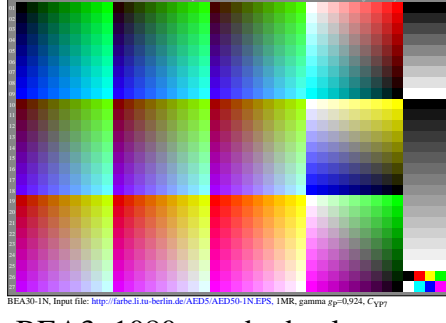
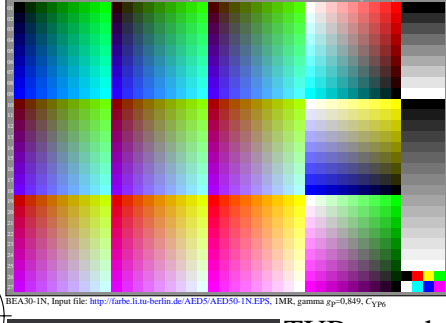
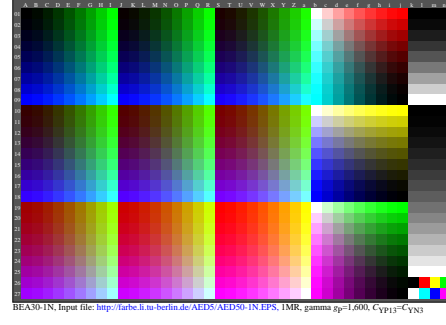
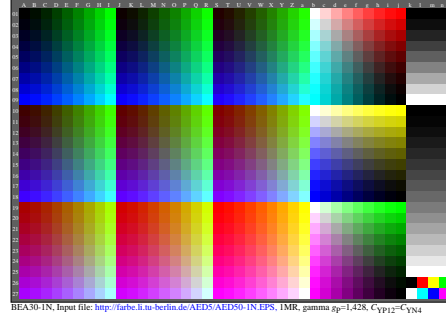
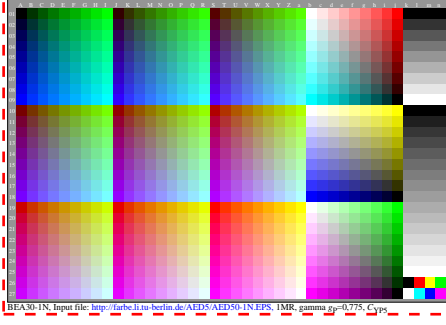
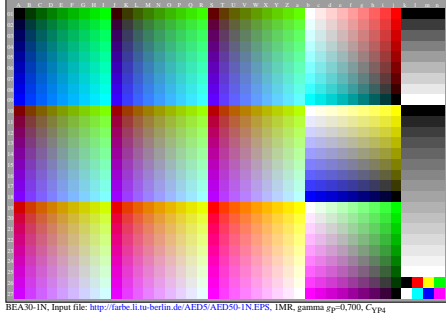
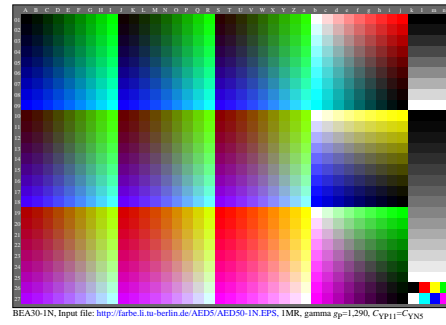
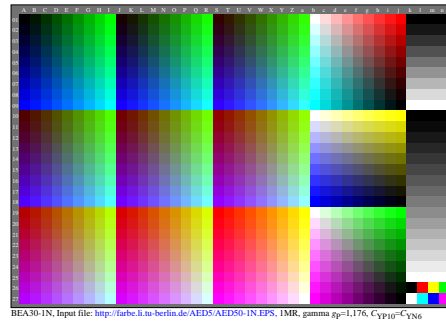
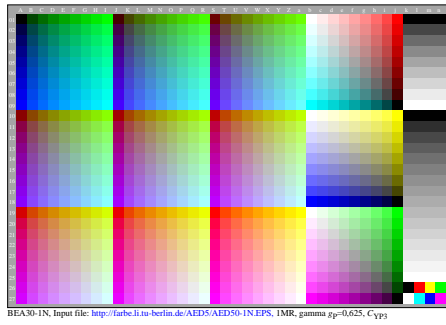
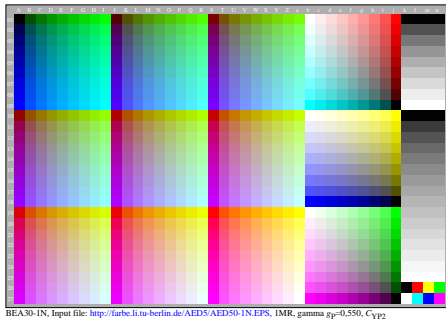
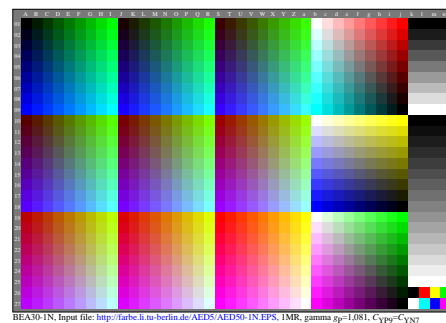
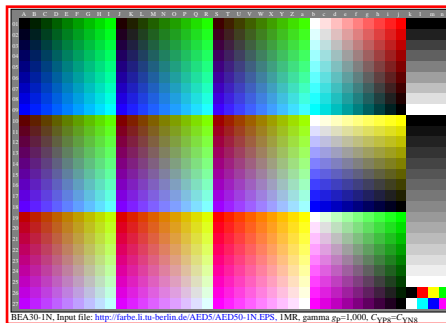
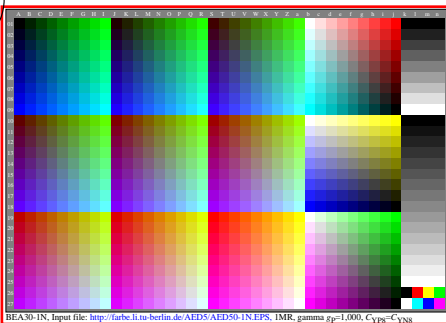


http://farbe.li.tu-berlin.de/BEA3/BEA3L0NP.PDF /.PS; only vector graphic VG; start output N: no 3D-linearization (OL) in file (F) or PS-startup (S), page 1/1

see similar files: <http://farbe.li.tu-berlin.de/BEA3/BEA3L0NP.PDF> / .PS application for evaluation and measurement of display or print output
<http://farbe.li.tu-berlin.de/BEA3/BEA3.HTM>
or <http://color.li.tu-berlin.de>

TUB registration: 20220301-BEA3/BEA3L0NP.PDF /.PS TUB material: code=rh4ta



TUB-test chart BEA3; 1080 standard colours
1 VG[0-1], 15 VG gamma transfer, similar ISO 9241-306:AE49

input: w/rgb/cmyk->rgb (1MR)
output: change of gamma gp

