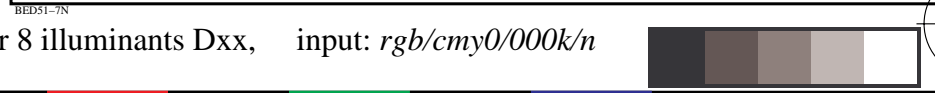
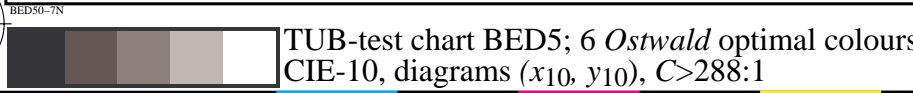
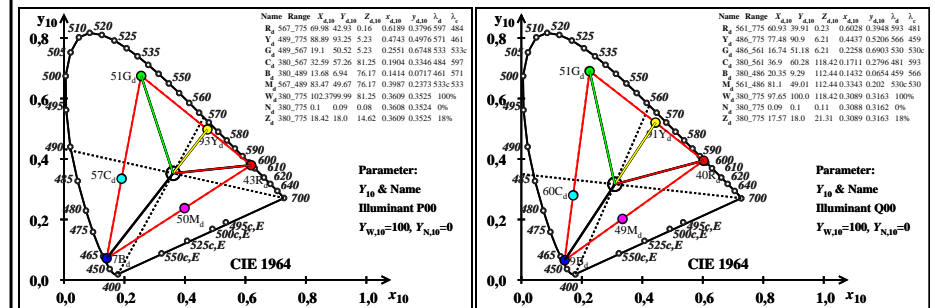
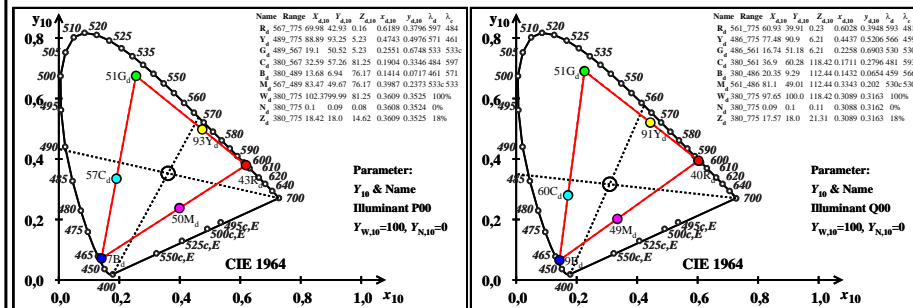
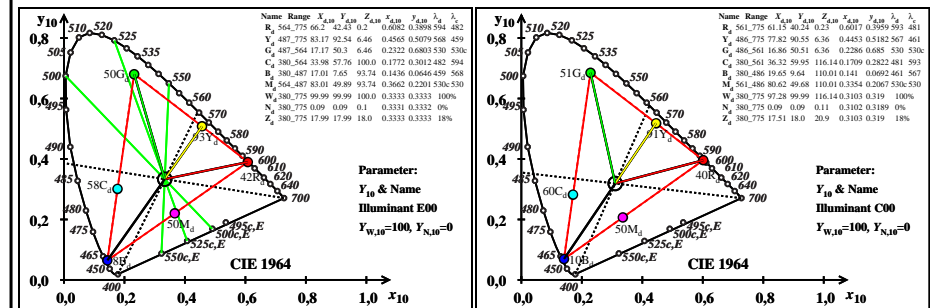
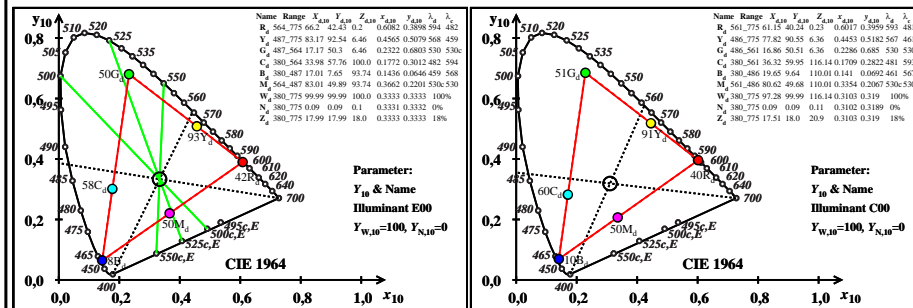
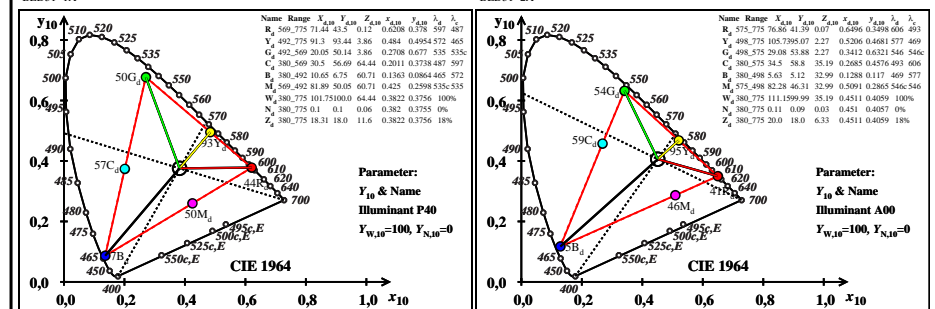
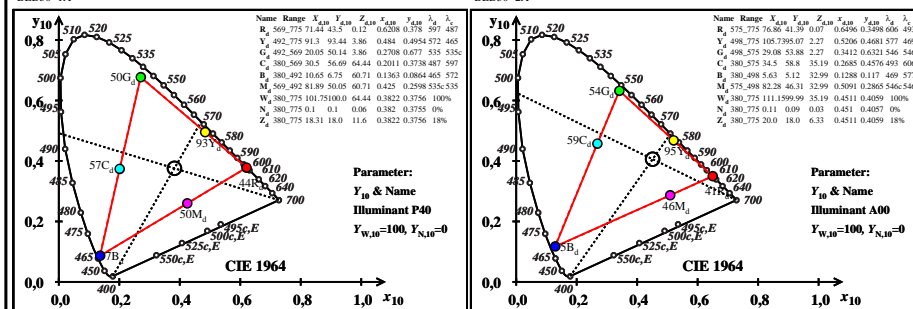
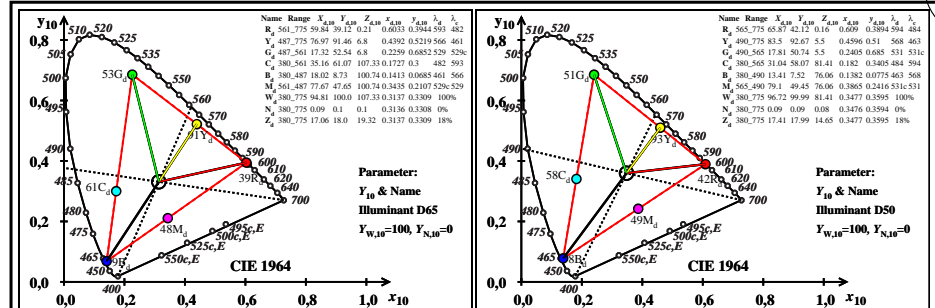
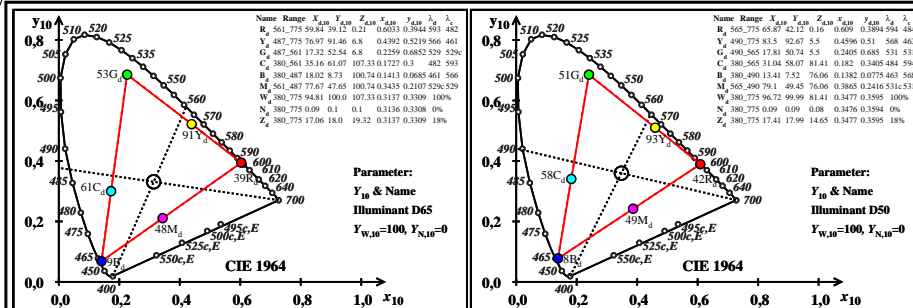


see similar files: http://farbe.li.tu-berlin.de/BED5/BED5L0NP.PDF /.PS application for evaluation and measurement of display or print output

TUB registration: 20220301-BED5/BED5L0NP.PDF /.PS TUB material: code=rh4ta



TUB-test chart BED5; 6 Ostwald optimal colors for 8 illuminants Dxx, input: rgb/cmy0/000k/n CIE-1964, diagrams (x<sub>10</sub>, y<sub>10</sub>), C>288:1